

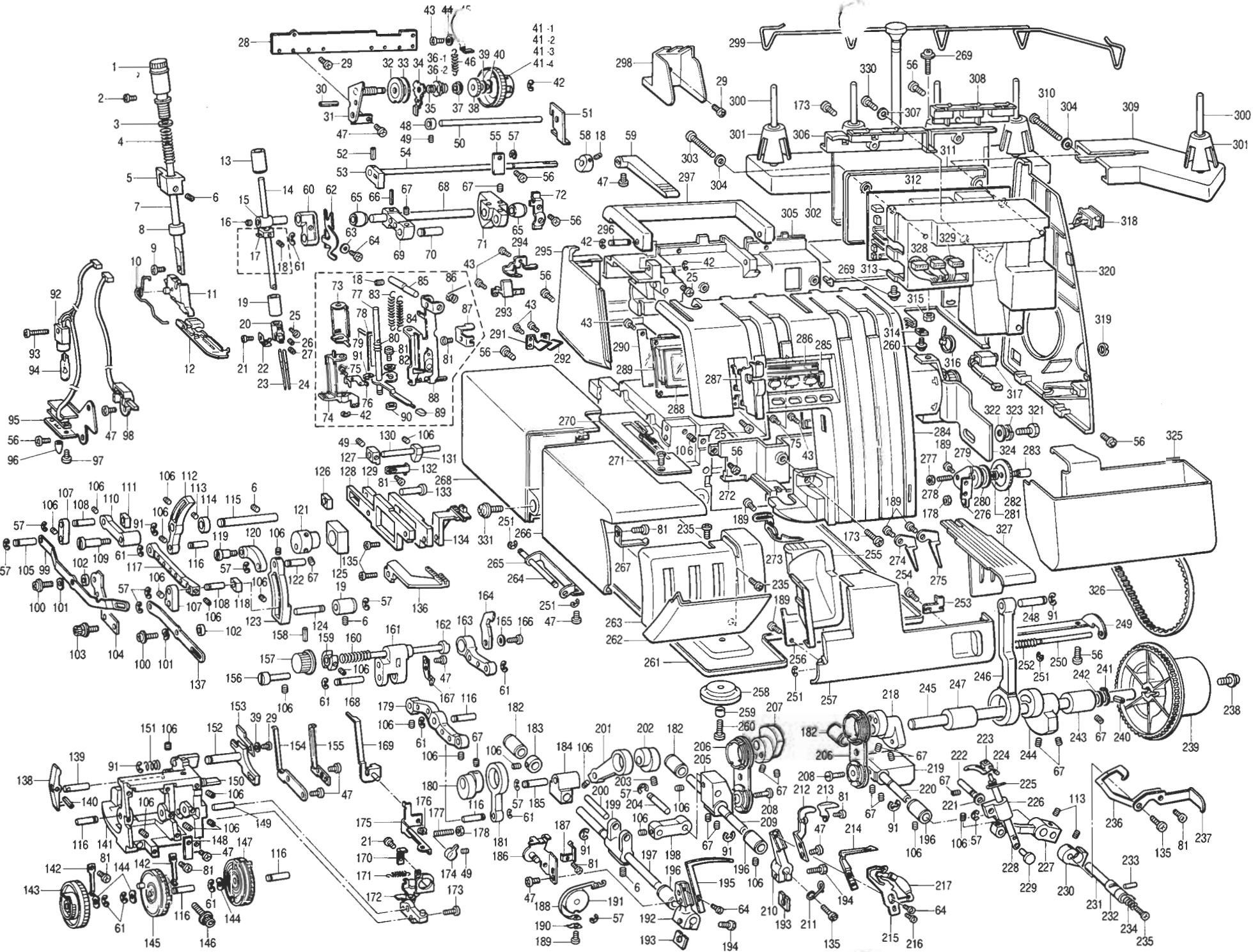
PARTS BOOK

FOR

brother® Overlock Sewing Machine

MODEL 9800LD

PL-2000



Ref. No.	Parts No.	Parts Name	Ref. No.	Parts No.	Parts Name	Ref. No.	Parts No.	Parts Name	Ref. No.	Parts No.	Parts Name
1	X76593001	Pressure adjustment dial	57	04804001	Stop ring	117	X76635001	Feed bar link	177	012401632	Screw
2	062300506	Screw	58	X7515001	Tension release cam	118	X76644000	Feed adjusting block	178	021400312	Nut
3	X76531001	Washer	59	X76597001	Presser foot lever	119	X76643001	Feed eccentric wheel shaft	179	X76698000	Upper blade driving arm
4	X77025001	Presser adjustment spring	60	126782001	Needle bar link A	120	X76624000	Feed link	180	X76695000	Upper blade eccentric wheel
5	X75099000	Presser bar bracket	61	048050346	Stop ring	121	X76641000	Feed eccentric wheel	181	X75140000	Upper blade link
6	014500522	Screw	62	X76506001	Thread take-up	122	X76626001	Feed link shaft	182	126611000	Looper lever shaft bushing, rear
7	X75134000	Presser bar	63	028040242	Spring washer	123	X76623000	Feed adjusting lever	183	X76800001	Horizontal lever collar
8	X75542000	Presser bar felt	64	062670612	Screw	124	X76628001	Feed adjusting lever shaft	184	X76790000	Horizontal lever
9	126851001	Screw	65	X75071000	Crankshaft bushing	125	X76642000	Vertical feed block	185	X76792001	Horizontal lever shaft
10	X76602001	Presser foot spring	66	047301842	Spring pin	126	X76648000	Differential feed bar block	186	X76808001	Double chain looper thread bracket assembly
11	X76600001	Presser foot holder assembly	67	012500632	Screw	127	X76681000	Feed bar guide, left	187	X76817001	Double chain looper thread guide notching spring
12	X76603001	Presser foot assembly	68	X76504001	Needle bar crankshaft	128	X76617000	Differential feed bar	188	X76812001	Double chain looper thread guide assembly
13	126702000	Needle bar bushing, upper	69	X75063000	Needle bar crank	129	X76614000	Main feed bar	189	037300612	Tapping screw
14	X76510001	Needle bar	70	X75217001	Needle bar rod shaft A	130	X76684001	Feed bar guide shaft	190	X76816001	Thread guide spring presser plate
15	126656001	Needle bar connecting stud	71	X76505000	Needle bar driving lever	131	X76683000	Needle plate supporting collar	191	X76811001	Double chain looper thread lever
16	014060632	Screw	72	X75058001	Upper shaft bushing presser	132	X76680001	Feed bar guide, right	192	X76805001	Double chain lever
17	X76579000	Stopper	73	X76570000	Positioning bracket	133	X76649000	Feed bar shaft	193	X05281001	Square washer
18	014300532	Screw	74	X76569000	Thread guide lever	134	X76613001	Main feed dog	194	017501615	Looper lever fixing screw
19	X76518000	Needle bar bushing, lower	75	037200416	Tapping screw	135	060400812	Screw	195	X76806001	Double chain looper
20	X76511001	Needle clamp	76	X76560001	Hook assembly	136	X76616001	Differential feed dog	196	X75251000	Looper lever shaft bushing, front
21	062300406	Screw	77	X76571000	Thread guide shaft	137	X76690001	Feed adjusting link C	197	X76819000	Double chain looper shaft
22	X76512001	Needle bar thread guide	78	X76566001	Change lever	138	X76734000	Lower blade movable lever	198	X76797000	Double chain link
23	X75577012	Needle #80	79	X76572000	Pin	139	X75090001	Lever holder shaft	199	X76795000	Double chain driving arm
24	X76341014	Needle HLx5 #14	80	X76573001	Spring	140	047301442	Spring pin	200	X76798001	Double chain link shaft A
25	062300806	Screw	81	062300412	Screw	141	X76453000	Needle plate base	201	X76787001	Double chain rod
26	015300516	Screw	82	026030232	Washer	142	X76688001	Dial guide spring	202	X76789000	Double chain eccentric wheel
27	015300416	Screw	83	X76574001	Positioning bracket spring	143	X76691001	Differential feed dial	203	012400532	Screw
28	X76871001	Thread tension bracket	84	X76565001	Stopper spring	144	X76687000	Wave washer	204	X76802001	Double chain link shaft B
29	060400612	Screw	85	X76576001	Thread guide shaft	145	X76689001	Feed dial	205	X76746000	Underlooper balance
30	047251042	Spring pin	86	X76577001	Thread guide spring	146	X76677001	Set screw	206	X75391001	Looper rod assembly
31	X76873001	Thread tension base assembly	87	X76575001	Bracket	147	X76738001	Lower blade dial assembly	207	X76167001	Underlooper rod eccentric wheel
32	X75981001	Thread tension disc A	88	X76554001	Thread guide assembly	148	X76496001	Control front cover spring	208	X75317001	Looper rod stud shaft
33	X75121001	Thread tension disc	89	X76567000	Change knob	149	X76552000	Stud shaft	209	X76751000	Underlooper lever shaft
34	X76877001	Thread tension releaser	90	X76568001	Collar	150	X76737001	Lower blade guide shaft	210	X76769001	Underlooper lever
35	X76460001	Thread tension spring SL	91	048060342	Stop ring	151	X75234001	Lower blade spring	211	X76438000	Double chain looper thread take-up lever
36-1	X76015001	Thread tension spring	92	X53086101	Sew-light assembly	152	X76726000	Lower blade holder	212	X76779001	Needle guard plate A
36-2	X76023001	Thread tension spring	93	002261405	Screw	153	X76728001	Lower blade	213	X76780001	Needle guard plate B
37	X75992001	Thread tension spring washer, upper	94	X50228001	Sew-light bulb	154	X76587001	Fixed needle guard A	214	X76771001	Underlooper
38	X76878000	Thread tension nut	95	X76912001	Sew-light plate	155	X76588001	Fixed needle guard B	215	X76773001	Underlooper thread guide base
39	025040232	Washer	96	X75461001	Sew-light switch cap	156	X76703001	Upper blade holder guide shaft	216	062670312	Screw
40	X76879000	Wave washer	97	002020416	Screw	157	X75088002	Upper blade knob	217	X76772001	Underlooper thread guide slide assembly
41-1	X76881001	Thread tension dial (Yellow)	98	X58432001	Sensor assembly	158	047201642	Spring pin	218	X76166001	Overlooper rod eccentric wheel
41-2	X76881002	Thread tension dial (Red)	99	X76692001	Differential adjusting link C	159	X76708000	Upper blade holder guide	219	X76744000	Overlooper balance
41-3	X76881003	Thread tension dial (Green)	100	138853001	Set screw	160	X76706001	Upper blade presser spring	220	X76749000	Overlooper lever shaft
41-4	X76881004	Thread tension dial (Blue)	101	X75729001	Wave washer	161	X76702000	Upper blade driving plate	221	025050132	Washer
42	048030342	Stop ring	102	X76423000	Spacer	162	X76705001	Upper blade holder	222	127784001	Overlooper shaft guide shaft
43	037200615	Tapping screw	103	X76678001	Set screw	163	X76720000	Upper blade arm	223	X75209001	Overlooper
44	026020235	Washer	104	X76420001	Material plate cover bracket	164	X76723001	Upper blade	224	014400332	Screw
45	X76882001	Dial clutch	105	X76686001	Adjusting link shaft	165	025350332	Washer	225	X75971001	Overlooper thread guide
46	X76883001	Clutch spring	106	014400422	Screw	166	060670812	Screw	226	X76766001	Overlooper shaft guide
47	060300616	Screw	107	X76639000	Adjusting link	167	X76704001	Safety mechanism	227	X76756000	Looper change lever
48	X76230001	Thread tension release block	108	X76647001	Adjusting block shaft	168	X76711001	Upper blade driving arm shaft	228	X75982001	Overlooper shaft
49	014300332	Screw	109	X76620001	Differential link shaft	169	X76535001	Movable stitch tongue	229	127785001	Overlooper lower shaft
50	X76887001	Thread tension release shaft C	110	X76619000	Differential adjusting link	170	X76542001	Stitch presser	230	X76758000	Looper change base
51	X76888001	Thread tension release plate	111	X76645000	Differential feed adjusting block	171	X76545001	Stitch spring	231	X76924001	Looper change shaft
52	047160842	Spring pin	112	X76631000	Feed bar lever	172	X76539001	Stitch tongue holder assembly	232	X76923001	Looper change knob
53	X75118000	Presser lifter cam	113	014400532	Screw	173	060401206	Screw	233	X76925001	Change guide shaft
54	X76596001	Presser lifter shaft	114	X75150001	Collar	174	X76544001	Stitch changing knob	234	126808001	Tension spring
55	X75308001	Shaft presser	115	X76633001	Feed bar lever shaft	175	X76543001	Stitch plate	235	060300806	Screw
56	060400606	Screw	116	X76637001	Feed bar link shaft	176	048050142	Stop ring	236	X76783001	Looper thread take-up lever

Ref. No.	Parts No.	Parts Name	Ref. No.	Parts No.	Parts Name	Ref. No.	Parts No.	Parts Name
237	X76784001	Underlooper thread take-up lever	293	X76999001	Left needle plate		X75590001	Needle set asse (#70, #80)
238	X76398001	Set screw	294	X76826001	Needle thread guide		X73917001	Needle set as (#80, #90)
239	X75202001	Handwheel	295	X76492001	Stitch control cover assembly		234522001	Controller FC-5
240	047402542	Spring pin	296	X75133001	Handie shaft		X59326001	Power cord SAA
241	048100142	Stop ring	297	X76495001	Handle		X00181001	Power cord BS (without plug)
242	127797000	Thrust washer	298	X76425000	Card cover		131430001	Power cord
243	126558000	Driving shaft bushing, right	299	X76902001	Antenna assembly		X50018001	Power cord CSA
244	X76431000	Needle bar eccentric wheel	300	142914001	Spool pin		X57079001	Power cord BS (with plug)
245	X76501001	Driving shaft	301	126863001	Spool cushion			
246	138839000	Needle bar rod	302	X75254001	Spool stand base		X76661001	Blind stitch presser foot set
247	X76497000	Driving shaft bushing, left	303	062303012	Screw		X76670002	Pearl sequence presser foot set
248	X75065001	Needle bar rod shaft	304	130971000	Polyethylene washer		X76668002	Piping presser foot set
249	X76459001	Front cover hinge	305	X76450001	Machine body		X76663001	Elastic taping presser foot set
250	X75629001	Front cover hinge shaft	306	X76899001	Rear cover assembly (M9800LD)			
251	048020346	Stop ring	306	X76899003	Rear cover assembly (PL-2000)			
252	126519000	Front cover coil spring	307	554166000	Insulation washer			
253	X75632001	Front cover hook	308	X76908001	Thread rectifier body assembly			
254	037300815	Tapping screw	309	X76905001	Spool stand base			
255	X76457001	Blade cover 1	310	002304005	Screw			
256	X76458001	Blade cover bracket	311	X76916001	Insulation cover plate			
257	X76455001	Front cover assembly (249-257)	312	X58435001	Base plate assembly 230ET			
257-1	X76456001	Front cover	312	X58436001	Base plate assembly 120ET			
257-2	X76461001	Thread guide control plate	313	X76915001	Insulation cover			
258	X75545000	Cushion A	314	127254001	Nut			
259	X75546000	Spacer	315	021400215	Nut			
260	X75720001	Set screw	316	122772000	Band			
261	X76445001	Oil pan	317	X58428001	Jack assembly			
262	X77005001	Control front cover (M9800LD)	317	X59346001	Jack assembly (Germany)			
262	X76477001	Control front cover (PL-2000)	318	X58908001	Inlet switch assembly E			
263	X76942001	Control cover plate	318	X58909001	Inlet switch assembly UL			
264	X76473001	Material plate cover hinge shaft	318	X58910001	Inlet switch assembly CSA			
265	X76449001	Material plate cover hinge	319	X51271001	Jack nut			
266	X76447001	Material plate front cover	320	X76494001	Belt cover E			
267	X76448001	Material plate cover spring	321	103741001	Screw			
268	X76474001	Material plate cover B	322	203735001	Spring washer			
269	X75770001	Set screw	323	100197004	Washer			
270	X76520001	Needle plate assembly	324	J01659001	Motor MM-351-23 (120V)			
271	100032003	Flat head screw	324	J01660001	Motor MM-351-57 (220V, Germany)			
272	X76862001	Inner cover assembly	324	J01661001	Motor MM-351-58 (220V, Switzerland)			
273	X76833001	Panel looper thread guide	324	J01662001	Motor MM-351-59 (230V)			
274	X76831001	Overlooper thread guide	324	J01663001	Motor MM-351-60 (240V)			
275	X76832001	Underlooper thread guide	325	X76918001	Dust box			
276	X76839001	Double chain looper thread tension base	326	X76413000	Timing belt			
277	021300302	Nut	327	X76919001	Blade cover 2			
278	012301032	Screw	328	X58423001	Lead wire assembly			
279	108263001	Thread tension disc	329	X58427001	Lead wire assembly #2			
280	125269001	Thread tension disc	330	037310612	Tapping screw			
281	X76841001	Double chain spring	331	X77012001	Set screw			
282	X76842001	Double chain looper thread tension dial						
283	X76840001	Double chain looper thread tension shaft		X76478001	Indication seal			
284	X76820001	Panel assembly M9800LD (273-283, 291-294)		X76432000	Accessory box			
284	X76820004	Panel assembly PL-2000 (273-283, 291-294)		X75437001	Screw driver			
285	X76914001	LCD switch		X55468051	Screw driver S			
286	X58424001	Key base assembly		X75433001	Pincette			
287	X76866001	Double chain looper take-up lever cover		523603001	Brush assembly			
288	X76653001	LCD sheet B		X75399000	Spool cap N			
289	X58420001	LCD base assembly		127610000	Net			
290	X76439000	Insulation sheet		127912001	Oiler assembly			
291	X76822001	Needle thread guide, left		123440000	Sewing sample bag			
292	X76823001	Needle thread guide, right		X75377003	Needle set assembly			