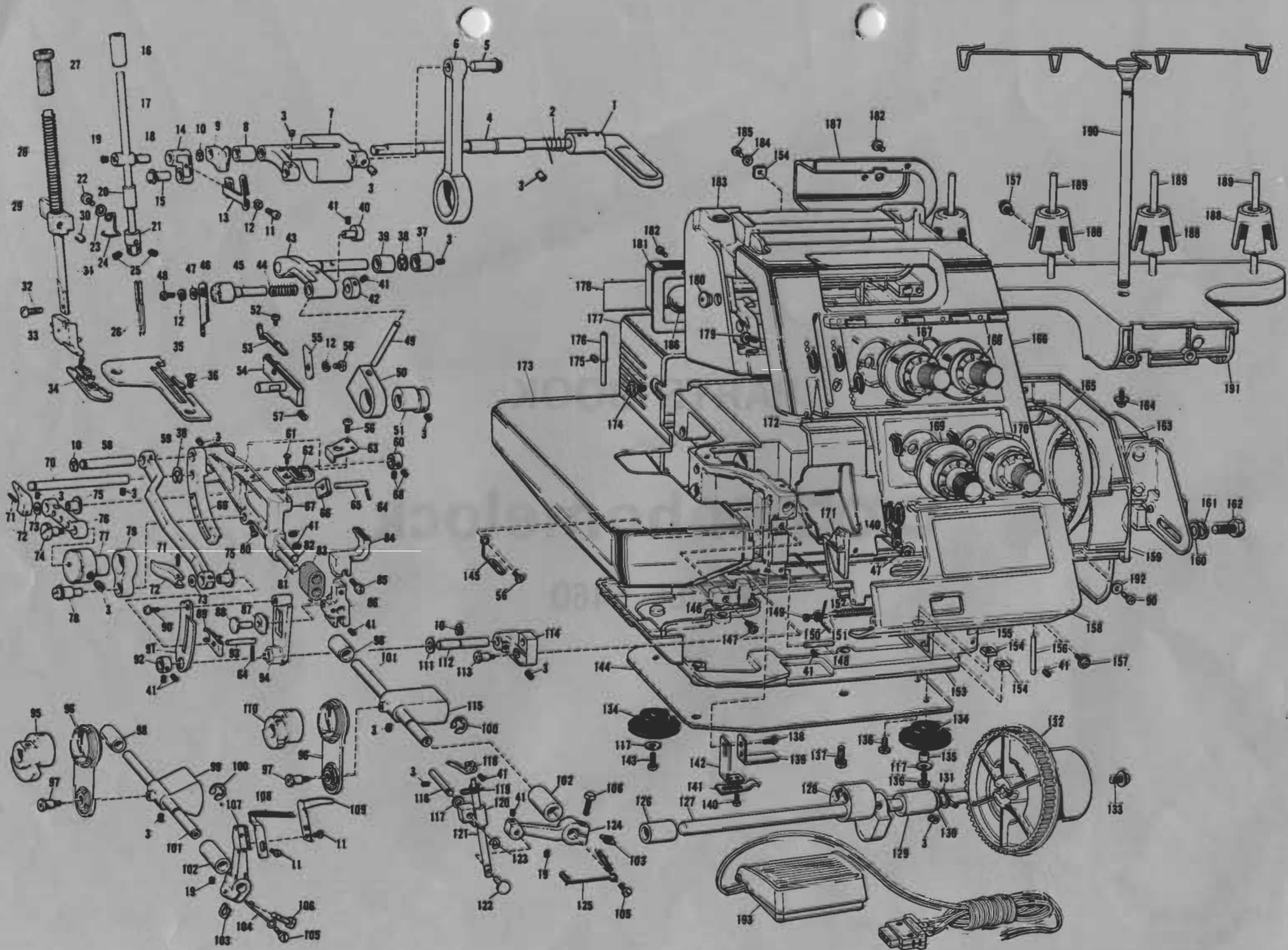


PARTS BOOK
FOR
brother homelock
MODEL 546D



Ref. No.	Parts No.	Parts Name	Ref. No.	Parts No.	Parts Name	Ref. No.	Parts No.	Parts Name	Ref. No.	Parts No.	Parts Name
1	138877005	Presser bar lifter	61	100080003	Set screw	121	127786001	Over looper shaft	181	127742003	Rear cover, r
2	X75041001	Spring	62	138897001	Main feed dog	122	127785001	Over looper stud shaft	182	062300604	Set screw
3	012500832	Set screw	63	138900001	Feed guide plate	123	048040342	Stop ring	183	X75808001	Machine body
4	147085000	Driving shaft bushing, right	64	047201442	Spring pin	124	X05076001	Over looper shaft lever	184	128850000	Washer
5	127189001	Rod shaft	65	X05001001	Feed adjusting shaft	125	X75636000	Looper thread take-up	185	062401206	Set screw
6	138839000	Needle bar rod	66	127558001	Spring	126	127890000	Driving shaft bushing left	186		Sew-light assembly
7	126566000	Needle bar driving lever	67	138832001	Main feed bar	127	127788001	Driving shaft	187	127080003	Rear cover, a
8	142822000	Driving shaft bushing, left	68	014400532	Set screw	128	127833001	Needle bar eccentric wheel assembly	188	128863001	Spool cushion
9	138879000	Presser lifter cam	69	X75723000	Feed bar lever	129	126558000	Driving shaft bushing, right	189	142914001	Spool pin
10	048050346	Stop ring	70	X75080001	Feed shaft	130	127797000	Washer	190	X75699001	Spool stand assembly
11	062670812	Set screw	71	047200842	Spring pin	131	048100142	Stop ring	191	127056002	Spool stand base
12	028040242	Spring washer	72	127559000	Feed adjusting cam	132	127530006	Timing pulley	192	025040332	Washer
13	127800001	Thread take-up	73	025040232	Washer	133	138849001	Set screw	193		Controller complete
14	126782001	Needle bar connecting link	74	126582001	Stud screw	134	126540000	Cushion		122991002	Vinyl bag for accessories
15	127186001	Needle bar link shaft	75	X05008001	Feed link bushing	135	X75329000	Spacer collar		X75801001	Screw driver
16	128702000	Needle bar bushing, upper	76	127776000	Feed link	136	062402005	Set screw		X75902001	Pinsette
17	X75650001	Needle bar	77	X05002000	Feed eccentric wheel	137	138850001	Set screw		127679003	Needle set
18	126656001	Needle bar connecting stud	78	127859001	Vertical adjusting shaft	138	062670812	Set screw		X75906001	Machine brush
19	014060822	Set screw	79	126872000	Vertical feed lever	139	126839001	Spring fixing plate, b		X75399000	Spool cap
20	126703000	Needle bar bushing, lower	80	104908002	Set screw	140	062670402	Set screw		X75903001	wrench 1.5
21	X75673001	Needle clamp	81	138889001	Differential feed guide shaft	141	126530001	Cloth plate cover spring plate		X75904000	Thread net
22	060300616	Set screw	82	138888001	Main feed bar shaft	142	126837001	Spring fixing plate, a		193560052	Instruction book (english)
23	028030246	Spring washer	83	X05041000	Sponge	143	142957001	Set screw		126736001	Machine cover
24	X75674000	Needle bar thread guide	84	138895001	Differential feed dog	144	X75677001	Base plate			
25	018300422	Set screw	85	060400812	Set screw	145	X75635000	Looper thread guide			
26	142935014	Needle #14	86	138873001	Differential feed bar	146	127004009	Front cover block			
27	142880001	Presser adjusting screw	87	100066001	Slide block	147	060401206	Set screw			
28	126882001	Presser bar spring	88	138867001	Guide shaft	148	126526001	Front cover stopper shaft			
29	127198000	Presser bar guide bracket	89	138899001	Spring plate	149	048020346	Stop ring			
30	100058003	Set screw	90	062400804	Set screw	150	126520001	Front cover stopper spring			
31	126680001	Presser bar	91	X05010001	Differential feed adjusting lever	151	126518001	Front cover guide shaft			
32	126851001	Set screw	92	138888001	Set collar	152	126519001	Spring			
33	138881001	Presser holder assembly	93	138871001	Differential feed link shaft	153	127334003	Oil pan			
34	127887001	Presser foot assembly	94	X05009001	Differential feed lever	154	127254001	Nut			
35	X75694001	Needle plate	95	127839001	Double chain looper eccentric wheel	155	127477006	Front cover hinge body			
36	100032003	Set screw	96	X75391001	Double chain looper rod	156	126524001	Front cover pin			
37	126594000	Driving arm bushing, right	97	X75317001	Stud screw	157	X75720001	Set screw			
38	048070342	Stop ring	98	126661000	Looper shaft bushing, rear	158	X75893001	Front cover			
39	126595000	Driving arm bushing, left	99	127824000	Under looper joint	159	127679005	Belt cover			
40	127656001	Upper knife holder guide shaft	100	048080342	Stop ring	160	100197004	Washer			
41	014400422	Set screw	101	X75679000	Double chain looper shaft	161	203735001	Spring washer			
42	127689001	Upper knife holder guide	102	126610000	Looper shaft bushing, front	162	103741001	Set screw			
43	127792001	Upper knife driving arm	103	X05281001	Washer	163		Motor complete			
44	126772001	Upper knife presser spring	104	127685001	Looper thread take-up	164	X75770001	Set screw			
45	126789001	Upper knife holder	105	105123003	Set screw	165	126533001	Timing belt			
46	127734001	Upper knife	106	017501415	Set screw	166	X75780001	Panel assembly			
47	025350332	Washer	107	X05077001	Under looper lever	167	X75782001	Needle tension dial assembly, l			
48	060670812	Set screw	108	127840001	Double chain looper assembly	168	X75783001	Needle tension dial assembly, r			
49	127805001	Upper knife driving lever	109	127813001	Needle guard plate	169	X75784001	Over looper thread tension dial assembly			
50	127795000	Upper knife driving lever guide	110	138792001	Looper rod eccentric wheel	170	X75785001	Under looper thread tension dial assembly			
51	127783000	Upper knife eccentric wheel	111	127125001	Washer	171	127677003	Front cover guide			
52	000020412	Set screw	112	138872001	Differential feed lever shaft	172	X75813001	Cloth guide plate			
53	X75668001	Needle guard	113	127965001	Stud screw	173	127863009	Cloth plate cover assembly			
54	X75769001	Lower knife holder	114	138896000	Differential feed lever base	174	X75721001	Set screw			
55	X05007001	Lower knife	115	127822000	Looper joint	175	014300332	Set screw			
56	060400812	Set screw	116	127784001	Guide shaft	176	126791001	Hinge pin			
57	151605002	Set screw	117	025710232	Washer	177	126536004	Motor cover			
58	138874001	Feed bar shaft	118	127814001	Over looper	178		Model mark			
59	138898000	Differential feed link	119	127817001	Over looper thread guide	179	037401014	Set screw			
60	X75150001	Set collar	120	127828000	Over looper shaft guide	180	114255001	Cap			

M546D (884-566)
T9120032
Printed in Taiwan