

**GEM 7700
SERIES
SUPER HIGH SPEED
OVERLOCK
MACHINE
超高速包缝机**

零件样本

Parts Book

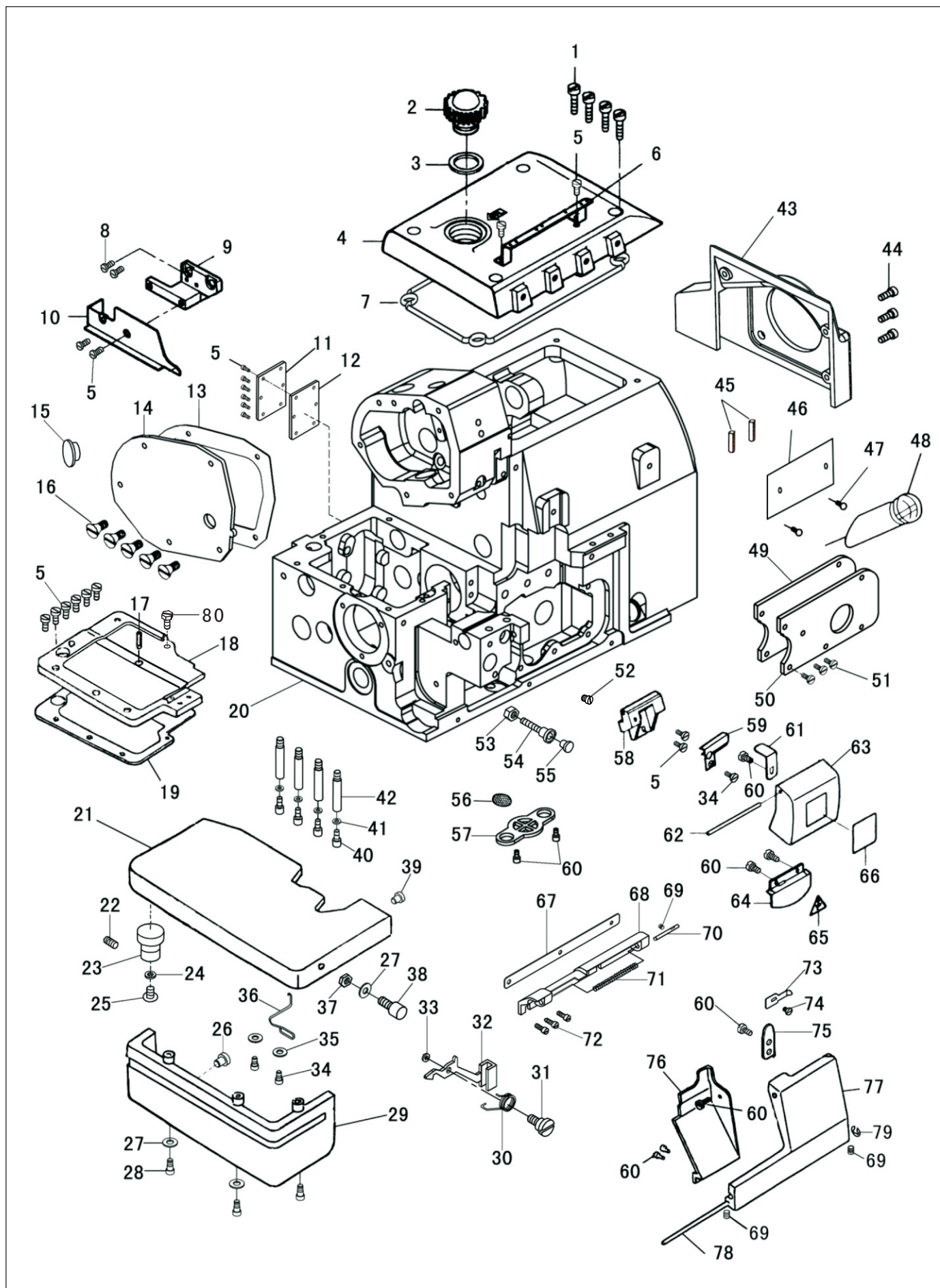
为了安全地使用，请您在使用之前一定阅读本使用说明书。另外，请您注意保管本使用说明书，以便随时查阅；零件更改设计时，恕不另行通知。

Read safety instructions carefully and understand them before using. Retain this Operation Instruction for future reference. Excuse for not noticement in advance while the design of the sparepart haw to be changed.

零件目录 PARTS CONTENTS

1. 机壳部件	1
Frame Components	
2. 主轴部件	5
Main Shaft Components	
3. 机针驱动部件	7
Needle Driving Components	
4. 差动部件	11
Differential Feed Mechanism Components	
5. 上下切刀部件	15
Upper&lower Knife Components	
6. 上下弯针部件	17
Upper&lower Looper Components	
7. 前弯针部件(五六线专用)	19
Chain Looper Components (for five & six thread)	
8. 抬压脚部件	23
Presser Footlifter Components	
9. 供油部件	25
Lubrication Mechanism Components	
10. 附件部件	27
Accessories Components	
11. 索引	I-IV
Index	

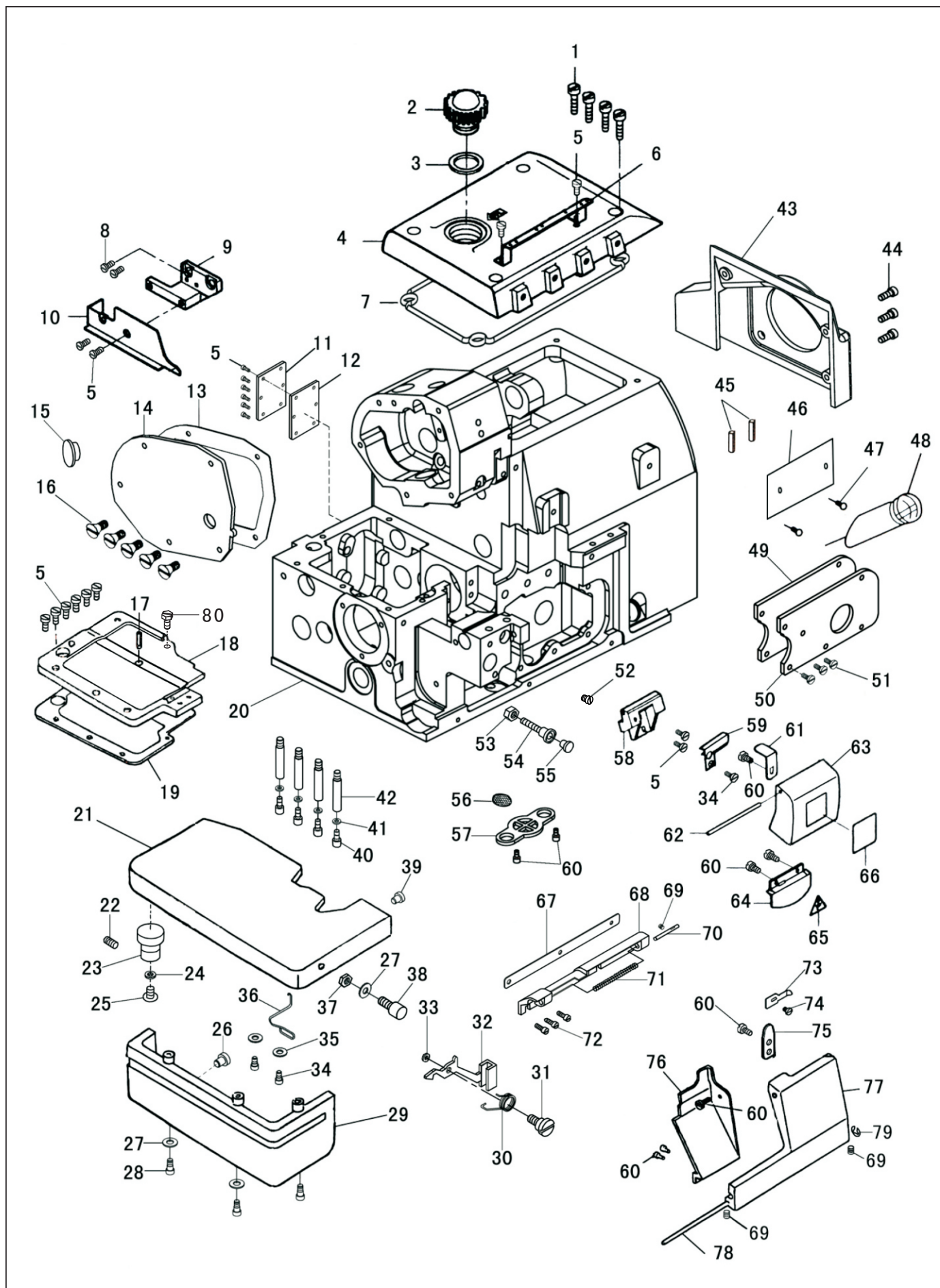
1.机壳部件 Frame Components



1.机壳部件 Frame Components

序号 NO.	图号 REF NO.	名称	DESCRIPTION	数量 AMT	备注 NOTE
1	11-40111525-01	螺钉	Screw SM11/64×40 L=15	4	
2	203-01-25	示油窗	Oil window	1	
3	209-02-05	油窗垫	Oil window washer	1	
4	2304-01-02	上盖	Upper cover	1	
5	11-40110825-01D	导线杆螺钉	Thread guide rod screw SM11/64 ×40 L=8	18	
6	2304-01-04	导线杆	Thread guide rod	1	
7	2304-01-03	上盖油封	Oil seal washer	1	
8	11-40151025-01	螺钉	Screw SM15/64 ×28 L=10.6	2	
9	293-01-04	导布板架	Guide bracket	1	
10	2304-12-09	导布板	Cloth plate side cover	1	
11	279-01-19	后盖板	Back cover plate	1	
12	279-01-18	油封	Oil seal	1	
13	293-01-06	侧盖板密封垫	Side cover gasket	1	
14	293-01-07	侧盖板	Side cover	1	
15	120-01-06	油封	Oil seal	1	
16	11-10110820-01	侧盖板固定螺钉	Screw SM11/64 ×28 L=8	5	
17	43-20300000-00	油线	Oil wick	0.03	
18	293-01-08	左上盖	Upper cover (left)	1	
19	293-01-09	盖板垫片	Cover plate gasket	1	
20	2304-01-01	车壳	Machine	1	
21	205-01-10	缝台组件	Cloth plate ASM.	<1>	
22	11-80111212-01	紧定螺钉	Screw SM11/64 ×40 L=5	<1>	
23	205-01-10-02	缝台偏心轴套	Eccentric bushing	<1>	
24	22-05000000-08	弹性垫片	Flexible washer	<1>	
25	205-01-10-04	螺钉	Screw	<1>	
26	279-01-50	缝台橡胶垫	Needle plate bracket rubber cushion	1	
27	21-04308090-01	缝台下罩壳垫圈	Cloth plate lower cover washer	4	
28	11-40091325-01	下罩壳固定螺钉	Lower cover fixing screw SM9/64 ×40 L=13	3	
29	205-01-13	缝台下罩壳组件	Cloth plate lower cover ASM.	1	
30	279-01-52	缝台闸弹簧	Cloth plate latch spring	1	
31	279-01-60	缝台闸固定螺钉	Cloth plate fixing screw	1	
32	279-01-53	缝台闸	Cloth plate latch	1	
33	21-05020100-01	垫片	Washer	1	
34	11-40080425-01	螺钉	Needle thread cover fixing screw SM1/8 ×44 L=4	3	
35	21-03405070-01	缝台弹簧紧定小垫片	Cloth plate spring locking little washer	2	
36	279-01-46	缝台弹簧	Cloth plate spring	1	
37	13-60093020-01	螺母	Nut SM9/64 ×40	1	
38	279-01-59	缝台锁紧定位销	Cloth plate locking position pin	1	
39	279-02-81	缝台橡胶垫	Needle plate bracket rubber cushion	1	
40	11-60151122-01	内六角螺钉	Hexagonal socket screw SM15/64×28 L=11.2	4	
41	21-06520150-01	垫片	Washer	4	
42	279-01-27	支柱	Column	4	
43	293-01-11	皮带轮罩	Belt cover	1	
44	11-40111225-01	带轮罩螺钉	Pulley guard screw SM11/64 ×40 L=12	3	
45	279-01-04	过线管	Thread guide tube	2	
46	2304-01-06	型号牌	Indicate plate	1	
47	101-01-14	商标牌铆钉	Trade mark plate rivet	2	
48	293-01-13	圆柱形油窗	Oil window	1	
49	279-01-56	油封	Oil seal	1	
50	279-01-57	盖板	Cover plate	1	
51	11-40110525-01	盖板螺钉	Cover plate screw SM11/64×40 L=7.5	3	
52	11-60160520-01	螺塞	Rubber plug SM1/4x40 L=7	1	

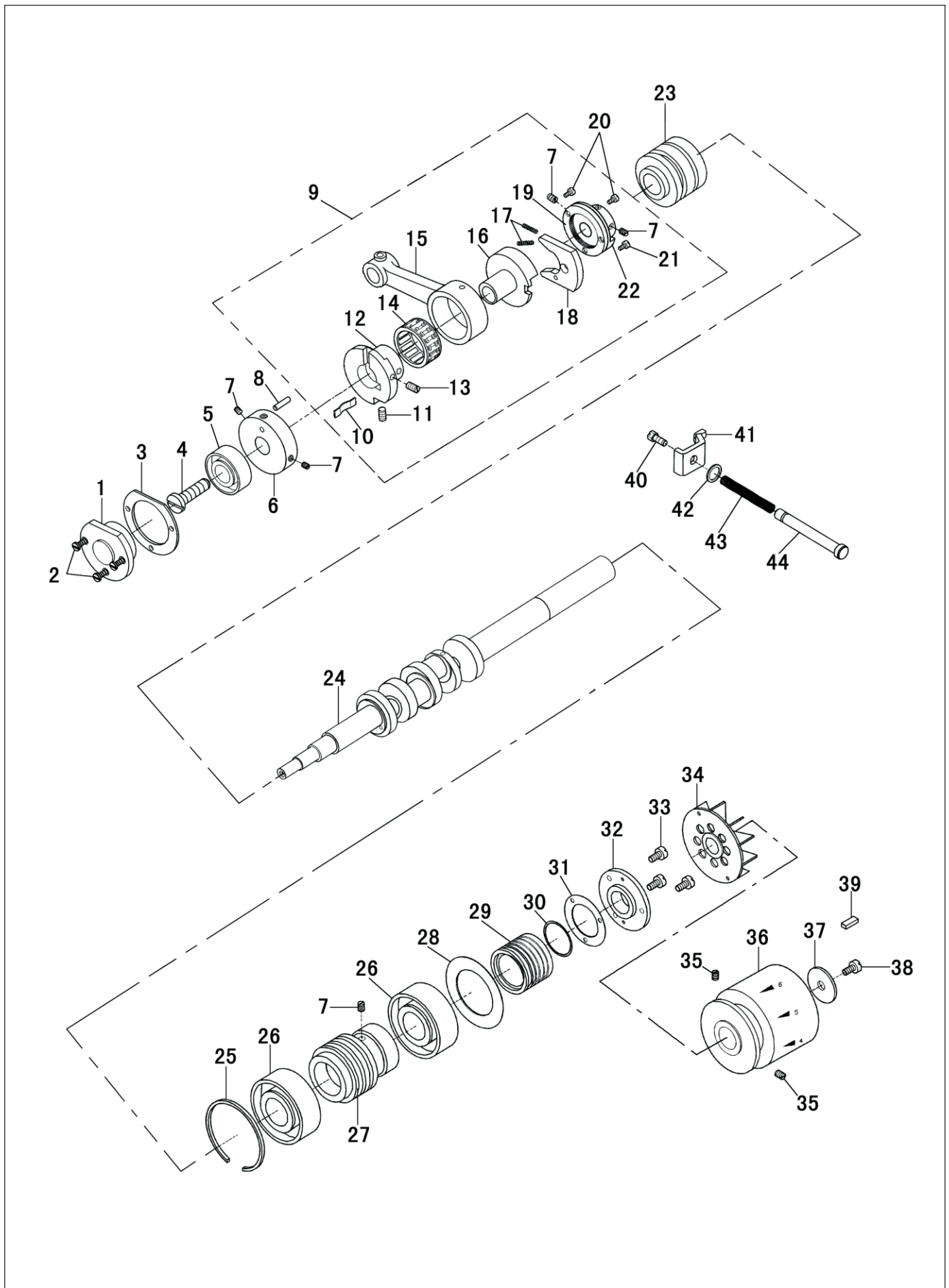
1.机壳部件 Frame Components



1.机壳部件 Frame Components

序号 NO.	图号 REF NO.	名称	DESCRIPTION	数量 AMT	备注 NOTE
53	13-60113020-01	锁紧螺母	Locking screw SM11/64 ×40	1	
54	279-01-61	缝台定位调节螺钉	Cloth plate stopped adjusting screw	1	
55	279-02-81	定位垫圈	Retaining washer	1	
56	2304.01-08	滤油网	Filter screen	1	
57	293-01-14	滤油网压板	Clip spring	1	
58	293.01-17	机针线罩壳支架	Needle thread cover bracket	1	
59	293-01-18	机针线罩壳支架压板	Needle thread cover bracket presser plate	1	
60	11-40090625-01	螺钉	Screw	9	
61	293-01-19	机针线罩壳支架弹簧板	Needle thread cover bracket flexible plate	1	
62	293-01-20	机针线罩壳支架销	Needle thread cover bracket pin	1	
63	2304-01-05	机针线罩壳	Needle thread cover	1	
64	203-01-17	观察镜	Oil sight window	1	
65	44-00000005-00	安全标记	Safety symbol	1	
66	2304-01-07	机头标牌	Indicate plate ASM.	1	
67	279-01-99	密封垫	Gasket washer	1	
68	279-01-94	前罩壳下铰链	Front cover lower hinge	1	
69	11-80110512-01	防转销螺钉	Driving pin screw SM11/64 ×40 L=5	3	
70	279-01-97	防转销	Driving pin	1	
71	279-01-96	铰链销弹簧	Hinge pin spring	1	
72	279-01-116	铰链螺钉	Hinge screw SM9/64 ×40 L=7.5	3	
73	279-01-101	前盖板锁紧舌	Front cover locking fastener tongue	1	
74	11-40110525-01	前盖板锁紧舌螺钉	Front cover locking fastener tongue screw SM11/64×40 L=5	1	
75	279-01-102	前盖板锁紧板	Front cover locking plate	1	
76	279-01-100	五线前盖板罩板	Five-thread front cover plate	1	五线用
	279-01-100B	三、四线前盖板罩板	Thread 、four-thread front cover plate	1	三、四线用
77	279-01-95	前罩壳	Front cover	1	
78	279-01-98	铰链销	Hinge pin	1	
79	24-03000000-08	铰链销卡簧	Hinge pin spring	1	
80	11-90110820-01	六角螺钉	Screw	1	

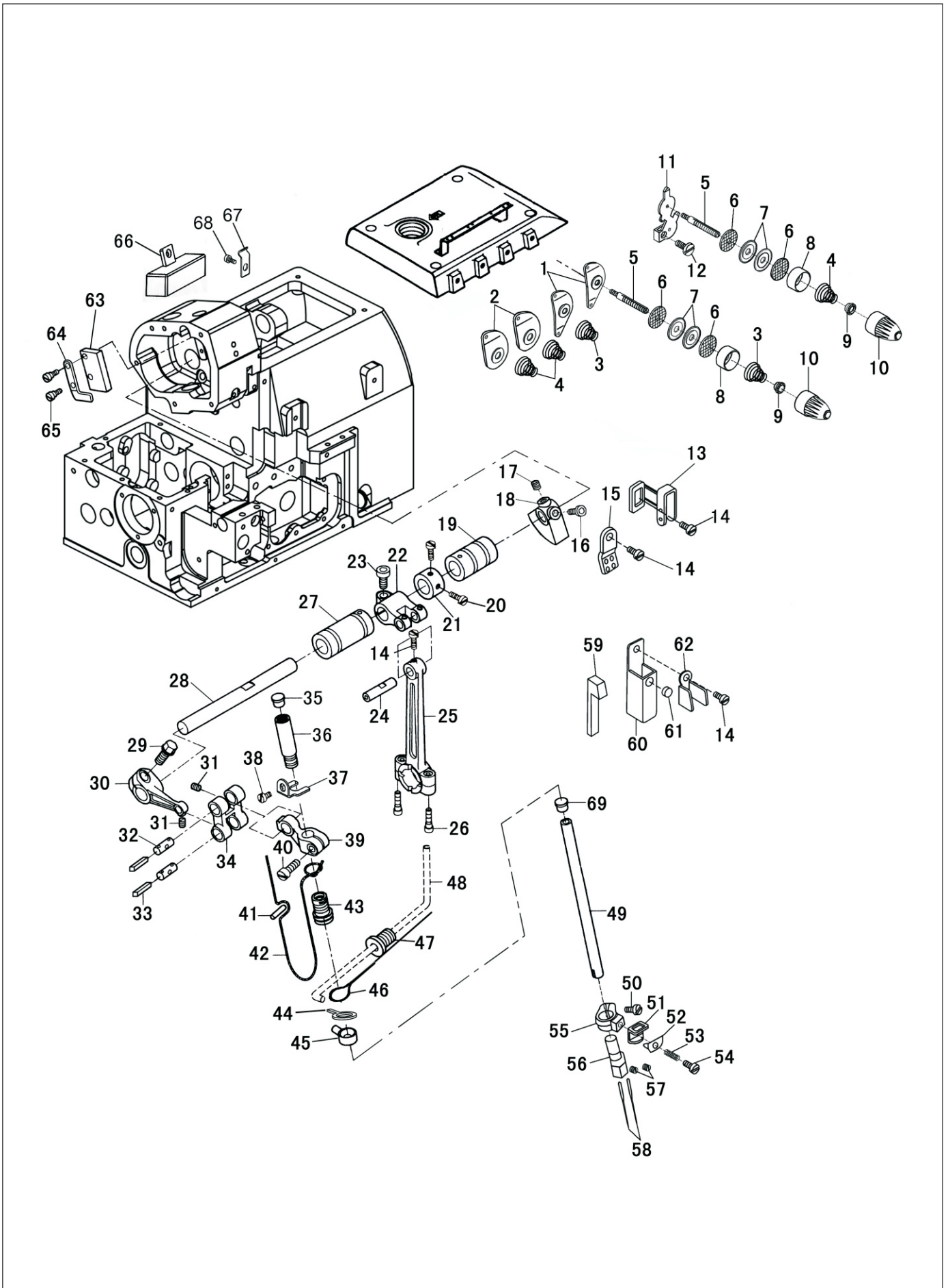
2. 主轴部件 Main Shaft Components



2.主轴部件 Main Shaft Components

序号 NO.	图号 REF NO.	名称	DESCRIPTION	数量 AMT	备注 NOTE
1	279-02-01B	三、四线轴承座	Three、four- thread bearing bracket	1	三、四线用
2	11-40090725-01	前轴承座螺钉	Front bearing bracket screw SM9/64×40 L=7	3	
3	279-02-02	前轴承座垫片	Front bearing bracket washer	1	
4	11-60141520-01	主轴堵螺钉	Main shaft screw SM7/32×32 L=3+11.6	1	
5	279-02-25	带密封单列向心球轴承	Ball bearing	1	
6	279-02-26	孔用挡圈	Hole thrust ring	<1>	
7	11-80110512-01	紧定螺钉	Worm set rivet SM11/64×40 L=5	5	
8	279-05-63	销子	Feed eccentric wheel pin	<1>	
9	279-05-64-00	送布组件	Feed ASM.	1	
10	279-05-67	弹簧	Spring	<1>	
11	11-80110512-01	内六角紧定螺钉	Hexagonal socket set screw SM11/64"×40 L=5	<1>	
12	279-05-66	偏心轮	Eccentric wheel	<1>	
13	279-05-97	内六角紧定螺钉	Hexagonal socket set screw SM1/8×44 L=2.8	<3>	
14	279-05-65	送布连杆滚针轴承	Feed connection rod needle bearing	<1>	
15	279-05-64	送布连杆	Feed connection rod	<1>	
16	279-05-68	针距凸轮	Needle gague cam	<1>	
17	279-05-71	弹簧	Spring	<2>	
18	279-05-69	扇形齿环	Segment gear collar	<1>	
19	279-05-73	调质定位齿圈	Regulating set gear ring	<1>	
20	279-05-101	螺钉	Screw SM1/8×40 L=4.4	<2>	
21	279-05-100	螺钉	Screw	<1>	
22	279-05-72	齿圈座	Gear ring bracket	<1>	
23	279-02-03	主轴中轴套组件	Main shaft intermediate bushing ASM.	1	
24	279-02-04-00-3	三、四线主轴连杆组件	Main shaft	1	三、四线用
	279-02-04-00-4	五、六线主轴连杆组件	Main shaft intermediate bushing ASM.	1	五、六线用
	293-02-04A	三、四线主轴组件	Main shaft intermediate bushing ASM.	<1>	三、四线用
	293-02-04C	五线主轴组件	Main shaft intermediate bushing ASM.	<1>	五线用
25	28-33014370-09	孔用弹性挡圈	Hole flexible thrust ring	1	
26	279-02-24	带密封单列向心球轴承	Ball bearing	2	
27	279-02-05	蜗杆	Worm	1	
28	23-26005340-09	弹性垫圈	Flexible washer	1	
29	279-02-06	油封	Oil seal	1	
30	31-16618000-09	O形密封	O gasket	1	
31	279-02-09	后轴承盖垫片	Back bearing cover washer	1	
32	279-02-10	后轴承盖	Back bearing cover	1	
33	11-40110825-01D	后轴承盖螺钉	Back bearing cover screw SM11/64×40 L=8	3	
34	279-02-11	叶轮	Leaf wheel	1	
35	11-80150810-01	带轮紧定钉	Pulley set screw SM15/64×28 L=8.5	2	
36	203-01-06	皮带轮	Pulley set key	1	
37	21-08025251-01	垫圈	Washer	1	
38	11-40151525-01	带轮轴向固定螺钉	Pulley shaft stopper rivet SM15/64×28 L=14	1	
39	279-02-107	定位键	Setkey	1	
40	11-90110820-01	固定螺钉	Fixing screw SM11/64×40 L=8	1	
41	279-05-85	针距调节块	Needle gague regulating support	1	
42	31-06718000-09	密封圈	Gasket washer	1	
43	279-05-83	弹簧	Spring	1	
44	279-05-82	针距调节轴	Needle gague regulating shaft	1	

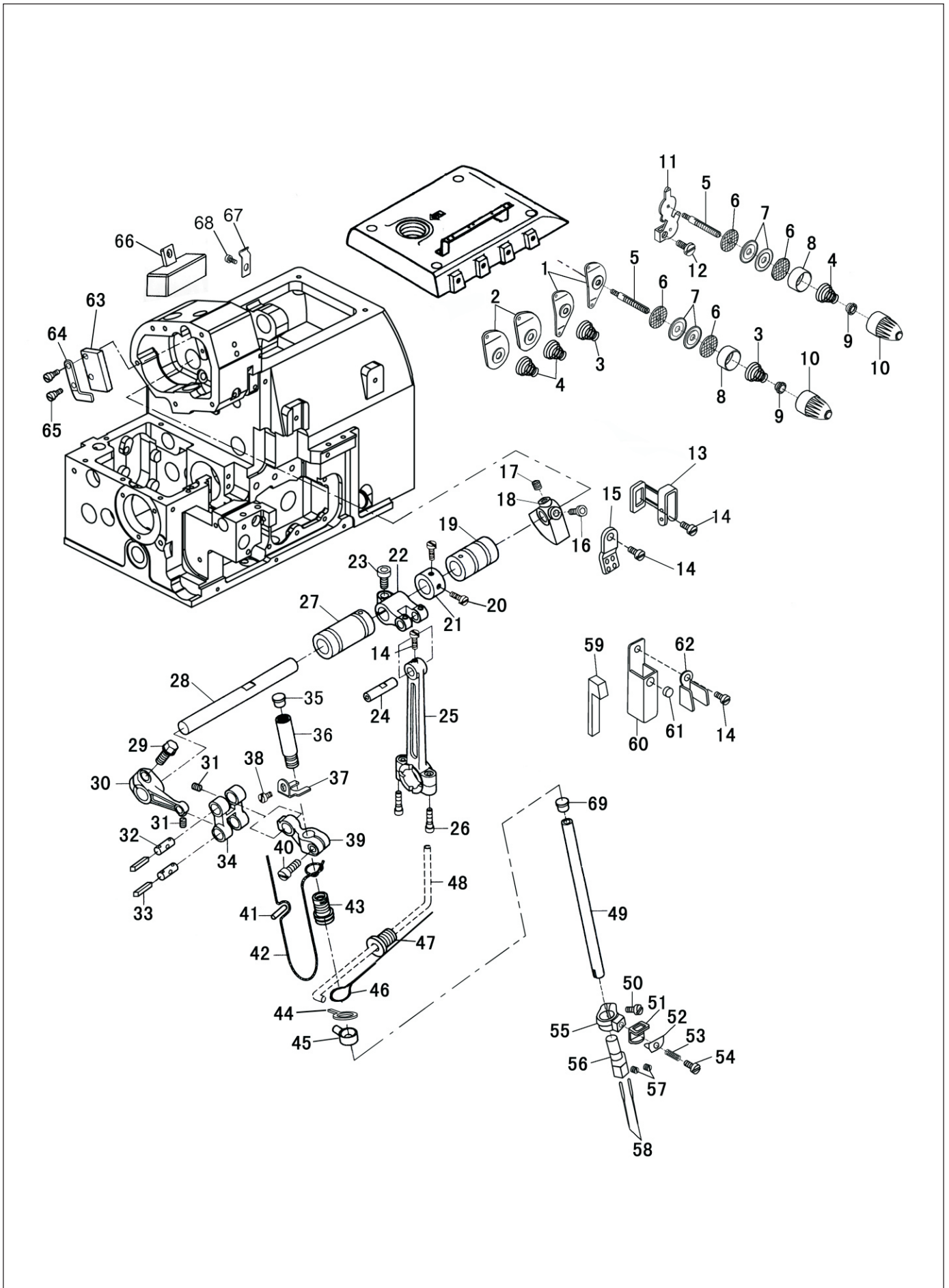
3.机针驱动部件 Needle Driving Components



3.机针驱动部件 Needle Driving Components

序号 NO.	图号 REF NO.	名称	DESCRIPTION	数量 AMT	备注 NOTE
1	203-01-22	过线板A	Thread guide plate A	2	
2	203-01-23	过线板B	Thread guide plat B	1	
3	279-02-67A	压线簧	Thread tension spring	2	
4	279-02-67	压线簧	Thread tension spring	1	
5	279-02-63	压线螺钉	Thread tension screw	3	
6	279-02-64	压线板垫圈	Thread tension disc washer	6	
7	279-02-65	压线板	Thread tension disc	6	
8	279-02-66	压线簧座	Thread tension spring holder	3	
9	279-02-68	压簧圈	Thread tension spring retainer	3	
10	2310-03-02	压线螺母组件	Thread tension nut	3	
11	279-02-61B	压线过线板	thread guide plate	1	六线用
12	279-02-106	过线板螺钉	thread guide plate screw	1	六线用
13	293-03-01	挑线勾过线	Take-up thread guide	1	四线不用
	293-03-01-01	挑线勾过线	Take-up thread guide	1	四线用
14	11-40110825-01D	导线杆螺钉	Thread guide rod screw SM11/64×40 L=8	4	
15	293-03-02	机针过线	Needle thread guide	1	四、六线不用
	293-03-02-01	机针过线	Needle thread guide	1	四线用
16	12-65601022-01	平衡块螺钉	Balance piece screw	1	
17	12-85601012-01	平衡块螺钉	Balance piece screw	1	
18	2304-03-02	平衡块	Balance piece	1	
19	293-03-03	机针传动后轴承	Needle driving back bearing	1	
20	11-00140710-01	平衡块固定螺钉	Balance shoe fixing screw SM7/32×32 L=6.4	2	
21	279-06-07	针杆摆轴挡圈	Needle bar rock shaft thrust ring	1	
22	293-03-04	机针传动摆轴曲柄	Balance shoe	1	
23	11-60151522-01	机针摆轴曲柄螺钉	Needle rock shaft crank screw SM15/64×28 L=15	1	
24	279-02-41	连杆销	Connection lever pin	1	
25	293-03-05	机针传动连杆组件	Needle driving lever	<1>	
26	11-40091225-01	螺钉	Upper looper washer L=12	2	
27	293-03-06	机针传动前轴承	Needle bar shaft oil seal	1	
28	293-03-07	针杆摆轴	Needle bar rock shaft	1	
29	209-05-15	连杆固定螺钉	Connection link fixing screw M6×13.5	1	
30	293-03-08	机针传动摆杆	Needle driving rock lever	<1>	
31	12-80300442-01	螺钉	Screw M3×4	<2>	
32	209-05-23	机针传动摆杆销	Needle driving rock lever pin	<2>	
33	43-20300000-00	油线 L=16mm	Oil wick	0.032	
34	293-03-10	双孔连杆	Double hole ling	<1>	
35	293-03-11	针杆上套闷头	Plug stud	1	
36	293-03-12	针杆上套	Needle bar upper bushing	1	
37	2304-03-01	针杆上套油线压板	Thread guide tube presser plate	1	
38	11-40110525-01	螺钉	Screw SM11/64×40 L=5	1	
39	293-03-14	针杆滑块	Needle bar slide block	<1>	
40	11-00090820-01	螺钉	Screw SM9/64×40 L=8	<1>	
41	279-05-63	销	Pin	1	
42	43-10250000-00	油线	Oil wick	0.08	
43	293-03-17	针杆下套	Needle bar lower bushing	1	
44	213-04-46	油毡	Oil seal	1	
45	213-04-45	油毡盖	Oil seal cover	1	
46	43-10250000-00	油线	Oil wick	0.3	
47	293-03-20	油管套	Oil tube bushing	1	
48	42-05003000-00	油管	Oil tube	0.23	
49	293-03-22	针杆	Needle bar	1	
50	12-40300825-01	螺钉	Screw SM3/32×56 L=6	1	

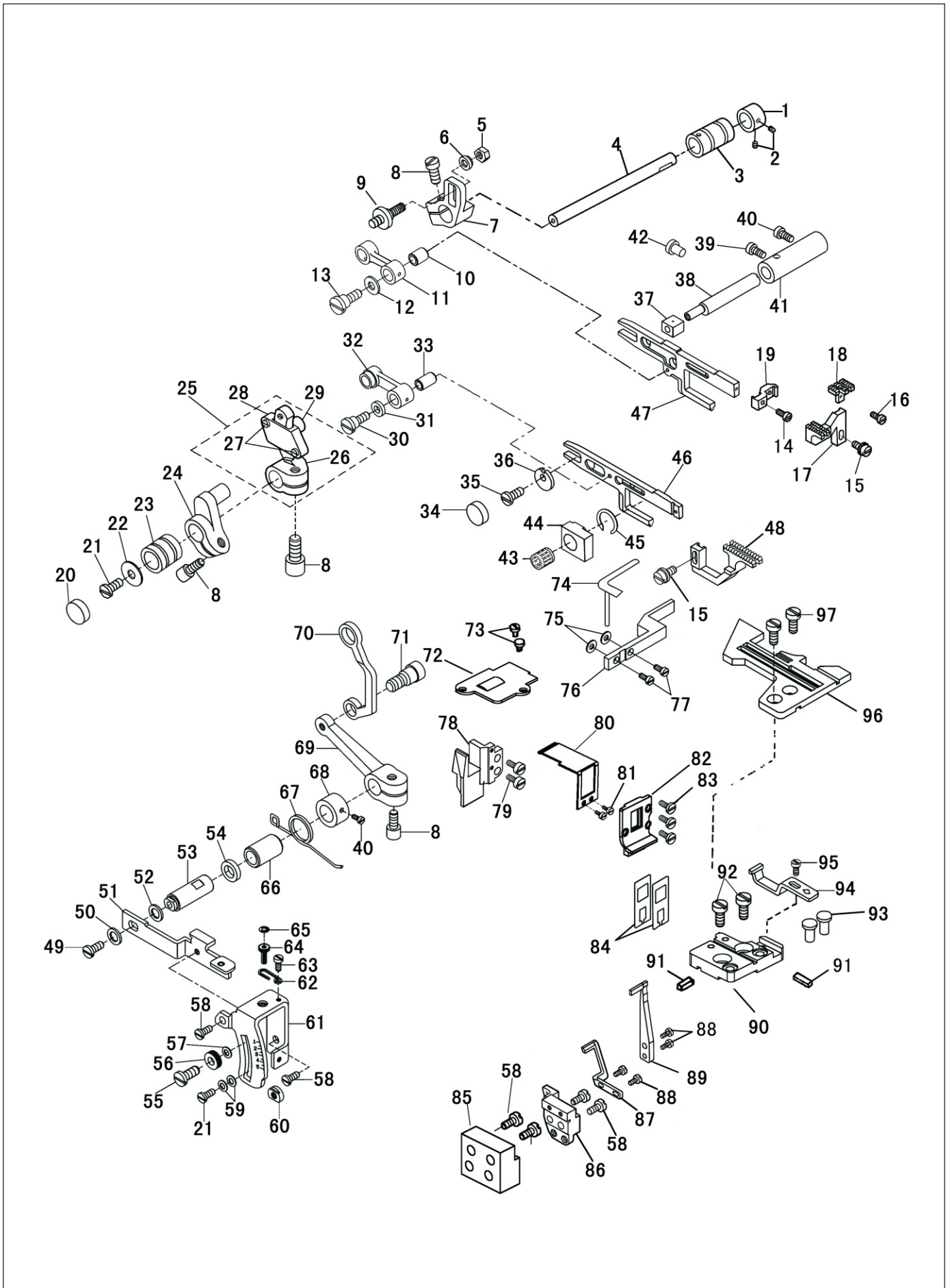
3.机针驱动部件 Needle Driving Components



3.机针驱动部件 Needle Driving Components

序号 NO.	图号 REF NO.	名称	DESCRIPTION	数量 AMT	备注 NOTE
51	214-04-36	压线底板	Thread tension upper plate	1	
52	213-04-33	压线上板	Thread tension lower plate	1	
53	213-04-34	压线簧	Thread tension spring	1	
54	293-03-26	压线压线螺钉	Thread tension screw	1	
55	293-03-27	针夹固定座	Needle holder	1	
56	279-02-76	五线针夹	Five-thread needle holder	1	五线用
56	279-02-76B	四线针夹	Four-thread needle holder	1	四线用
56	279-02-76C	三线针夹	Three-thread needle holder	1	三线用
56	218-02-76D	六线针夹	Six-thread needle holder	1	六线用
56	206-02-06	五线厚料针夹	Five-thread needle holder	1	五线厚料用
57	11-80080312-01	针夹头螺钉	Oil wick presser screw SM1/8 ×40 L=3	1	
58	279-02-30	DC×27 11#机针	14#needle	1	三、四线用
	279-02-30A	DC×27 14#机针	11# needle	2	五、六线用
	206-02-08	DC×27 18#机针	18#needle	2	五线厚料用
	208-05-38	DC×27 9#机针	9# needle	1	三线用
59	293-03-28	油毡	Oil felt	1	
60	293-03-29	小油箱	Small oil seal	1	
61	279-05-18	油封	Oil seal	1	
62	293-03-30	小油箱过线	Small oil tank thread guide	1	
	293-03-30-01	小油箱过线	Small oil tank thread guide		六线用
63	293-03-31	油毡	Oil felt	1	
64	293-03-32	油毡压板	Press seal spring	1	
65	11-40090825-01D	螺钉	Screw SM9/64×40 L=10	2	
66	293-03-33	照明灯组件	Light ASM.	1	
66	293-03-33-02-1	衣车灯	Dress lamp	(1)	
66	293-03-33-02-2	衣车灯变压器	Dress lamp transformer	(1)	
67	293-03-34	压线板	Thread tension plate	4	
68	11-40110525-01	螺钉	Screw SM11/64×40 L=5	4	
69	132.10-32	针杆上套闷头	Plug stud	1	

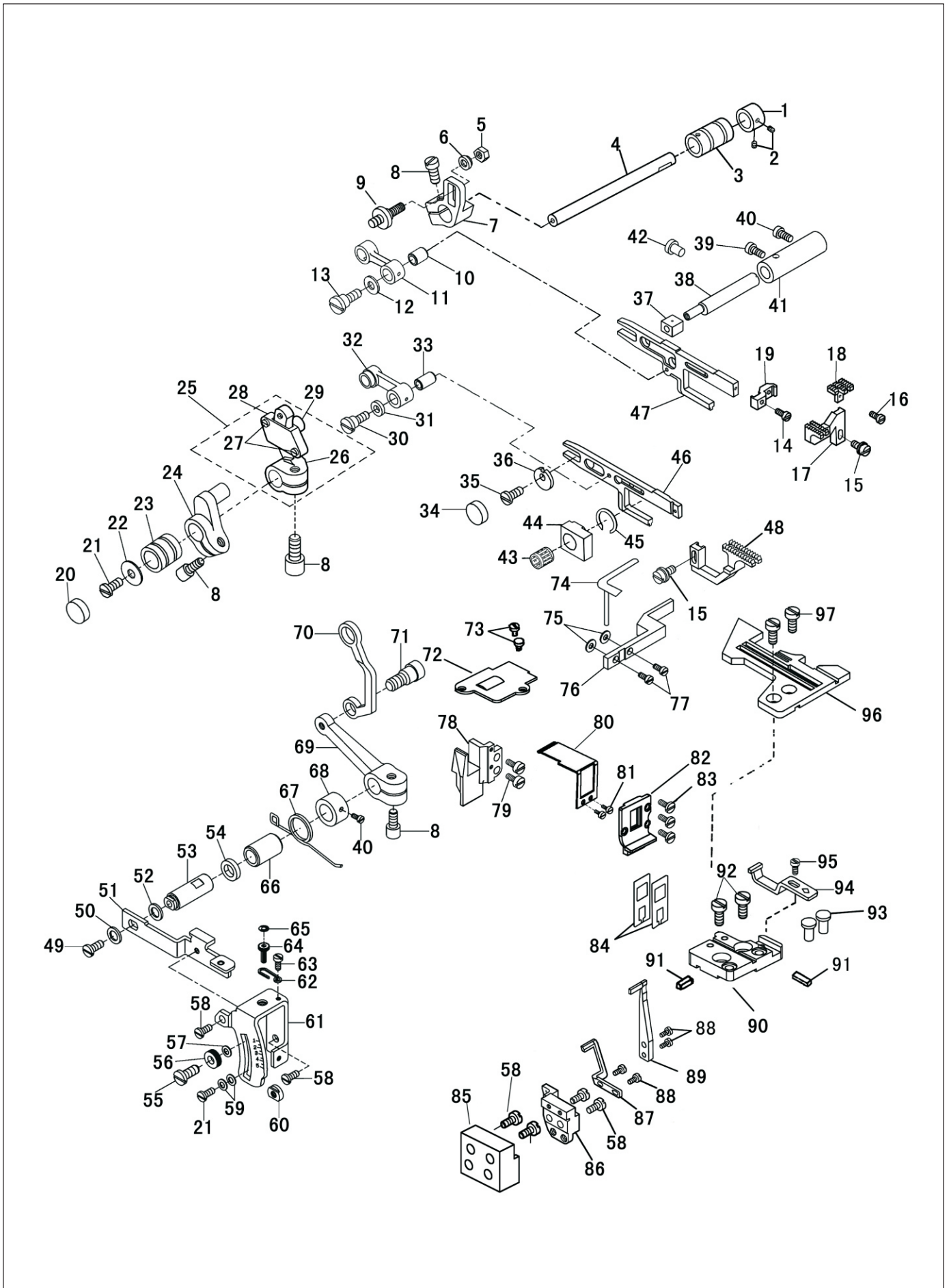
4. 差动部件 Differential Feed Mechanism Components



4.差动部件 Differential Feed Mechanism Components

序号 NO.	图号 REF NO.	名称	DESCRIPTION	数量 AMT	备注 NOTE
1	279-06-07	挡圈	Thrust ring	1	
2	11-00140710-01	螺钉	Balance shoe fixing screw SM7/32 ×32 L=6.4	2	
3	279-05-09	送布轴铜轴承	Feed shaft copper bearing	1	
4	279-05-10	送布轴	Feed shaft	1	
5	13-60145520-01	螺母	Crank regulating pin nut SM7/32×32	1	
6	279-05-08	垫圈	Washer	1	
7	279-05-06	送布调整曲柄	Feed adjusting crank	1	
8	11-60151522-01	圆柱头内六角螺钉	Thread guide washer SM15/64×28 L=15	4	
9	279-05-07	送布牙连杆偏心轴	Feed dog connection link eccentric shaft	1	
10	279-05-21	送布牙连杆套	Feed bar connection link bushing	1	
11	279-05-20	送布牙架连杆	Feed bar holder connection link	1	
12	21-04615122-02	送布牙架连杆套垫圈	Feed bar holder connection link bushing washer	1	
13	279-05-47	送布牙架连杆套螺钉	Feed bar holder connection link bushing screw	1	
14	279-01-116	螺钉	Screw SM9/64×40 L=7.5	1	
15	11-40090725-01	螺钉	Screw SM9/64 ×40 L=8	2	
16	279-05-52	副送布牙螺钉	Feed dog screw SM3/32×56 L=6.5	1	
17	279-05-34	五线主送布牙	Five-thread main feed dog	1	五线用
	279-05-34A	三线主送布牙	Three-thread main feed dog	1	三、四线用
	206-02-05	五线厚料主送布牙	Five-thread main feed dog(heavy material)	1	五线厚料用
	218-05-34C	六线主送布牙	Six-thread main feed dog	1	六线用
18	279-05-33	五线副送布牙	Five-thread feed dog	1	五线用
	206-02-04	厚料副送布牙	Five-thread feed dog (heavy material)	1	五线厚料用
	279-05-33A	三线副送布牙	Three-thread feed dog	1	三、四线用
	218-05-33C	六线副送布牙	Six-thread feed dog	1	六线用
19	279-05-28	送布牙底板	Feed dog foot	1	
20	279-05-17	油封	Oil seal	1	
21	11-40110525-01	螺钉	Presser seal screw SM11/64 ×40 L=5	2	
22	21-04516162-03	垫片	Washer	1	
23	279-05-01	送布轴铜轴承	Feed shaft copper bearing	1	
24	279-05-02	送布曲柄	Feed shaft crank	1	
25	279-05-03-00	差动器组件	Differential feed ASM.	1	
26	279-05-03	差动牙架调整曲柄	Differential feed bar adjusting crank	<1>	
27	279-05-40	滑块盖板螺钉	Block cover screw SM1/8×44 L=4.6	<2>	
28	279-05-05	滑块盖板	Block thrust ring	<1>	
29	279-05-04	滑块	Block	<1>	
30	279-05-48	差动牙架连杆套螺钉	Differential feed bar connection link bushing screw	1	
31	21-0415122-02	差动牙架连杆套垫圈	Differential feed bar connection link bushing washer	1	
32	279-05-23	差动牙架连杆	Differential feed bar connection link	1	
33	279-05-24	差动牙架连杆套	Differential feed bar connection link bushing	1	
34	279-05-12	油封	Oil seal	1	
35	11-10080620-01	挡板螺钉	Screw SM1/8×44 L=6	1	
36	279-05-16	差动送布挡圈	Differential feed thrust ring	1	
37	279-05-15	差动送布滑块	Differential feed block	1	
38	279-05-14	滑块偏心轴	Block eccentric shaft	1	
39	11-00111220-01	滑块偏心轴螺钉	Block eccentric shaft screw SM11/64×40 L=12.3	1	
40	11-90110520-01	滑块轴固定套螺钉	Block shaft set bushing screw SM11/64×40 L=5.3	2	
41	279-05-13	滑块轴固定套	Block shaft stopper bushing	1	
42	279-05-18	油封	Oil seal	1	
43	279-05-27	抬牙滑块轴承	Feed bar lifter block bearing	1	
44	279-05-25	抬牙滑块	Feed bar lifter block	1	
45	28-12503162-09	抬牙滑块轴承挡圈	Feed bar lifter block bearing thrust ring	1	
46	279-05-22	差动牙架	Differential feed bar	<1>	

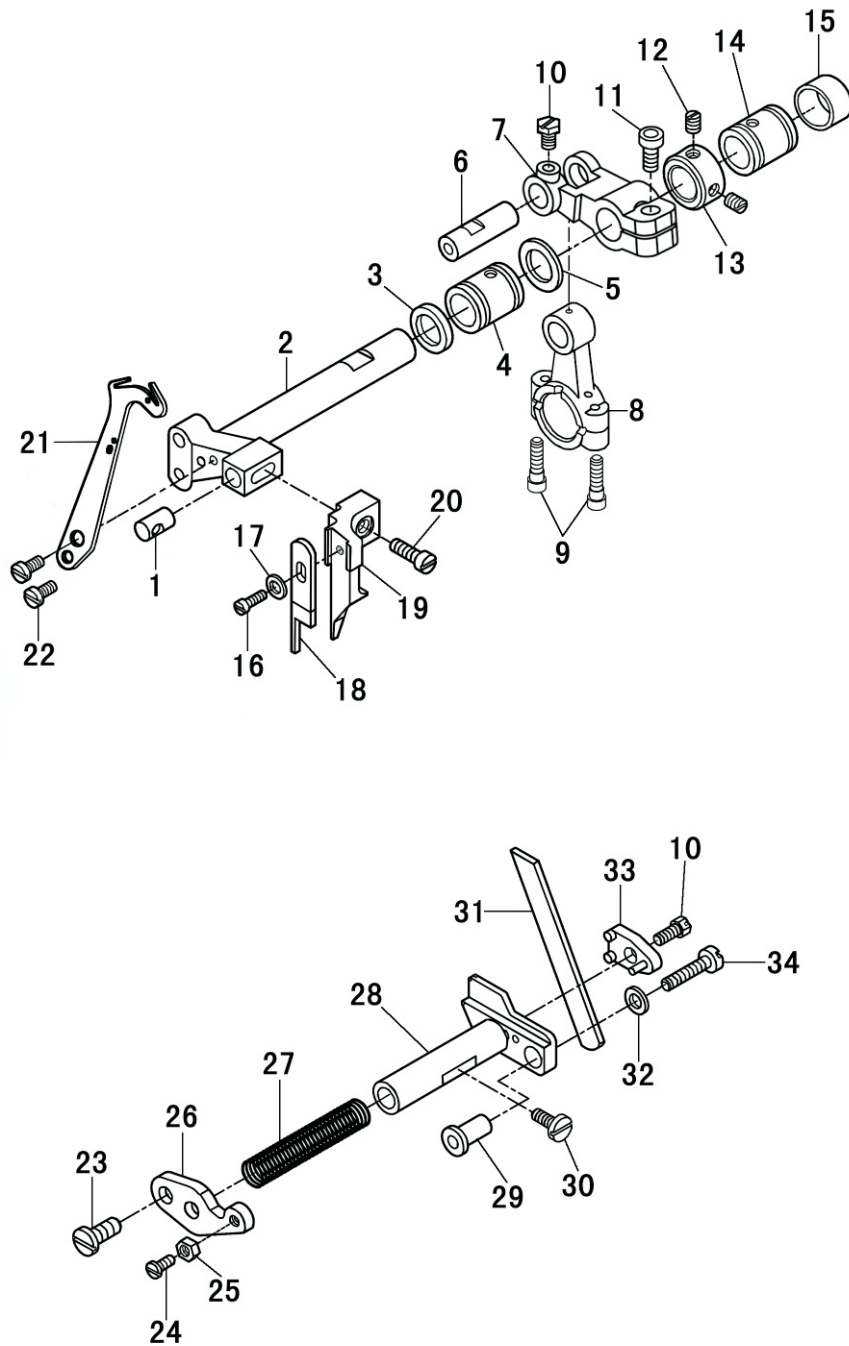
4. 差动部件 Differential Feed Mechanism Components



4.差动部件 Differential Feed Mechanism Components

序号 NO.	图号 REF NO.	名称	DESCRIPTION	数量 AMT	备注 NOTE
47	279-05-19	送布牙架	Feed bar holder	<1>	
48	279-05-35	五线差动牙	Five-thread differential feed dog	1	五线用
	206-02-03	厚料差动牙	Five-thread differential feed dog(heavy material)	1	五线厚料用
	279-05-35A	三线差动牙	Three-thread differential feed dog	1	三、四线用
	218-05-35C	六线差动牙	Six-thread differential feed dog	1	六线用
49	11-90110820-01	六角螺钉	Upper cover (left) hexagon screw SM11/64 ×40 L=8	1	
50	21-04608110-01	调节螺钉垫圈	Regulator screw washer	1	
51	279-05-81	差动调节扳手	Differential regulating feed handle	1	
52	21-08025251-01	拉杆曲柄垫圈	Pitman rod crank washer	1	
53	279-05-75	拉杆曲柄轴	Pitman rod crank shaft	1	
54	32-09430150-09	油封	Oil seal	1	
55	279-05-108	手轮螺钉	Hand wheel screw	1	
56	279-05-90	手轮	Hand wheel	1	
57	23-06005120-09	手轮垫片	Washer	1	
58	11-40110825-01D	针距调节指示板螺钉	Needle gague regulating scale plate screw SM11/64×40 L=8	6	
59	23-05003090-09	碟形垫圈	Wing washer	2	
60	279-05-110	调节螺钉螺母	Regulating screw nut SM11/64×40	1	
61	279-05-86	针距调节指示板	Needle gague regulating indicator plate	1	
62	279-05-89	调节 螺栓卡簧	Regulator bolt spring	1	
63	11-40080425-01	调节螺栓卡簧螺钉	Regulator bolt spring screw SM1/8×40 L=4.5	1	
64	279-05-88	调节螺栓手轮钮	Regulator bolt hand wheel knob	1	
65	279-05-87	标记牌	Marking card	1	
66	279-05-74	拉杆曲柄铜轴承	Pitman rod crank copper bearing	1	
67	279-05-76	差动扳手扭簧	Differential feed handle torsion spring	1	
68	279-05-77	拉杆曲柄轴挡圈	Pitman rod crank shaft thrust ring	1	
69	279-05-78	差动调节曲柄	Differential regulating crank	1	
70	279-05-80	差动调节连杆	Differential regulating connection link	1	
71	279-05-104	轴定螺钉	Cheese head set screw	1	
72	2304-04-01	挡油罩	Oil seal cover	1	
73	11-10090520-01	挡油罩螺钉	Oil seal cover screw SM1/8 ×44 L=4	2	
74	279-02-78	针板橡胶垫	Needle plate rubber cushion	1	
75	21-03810080-01	垫圈	Washer	2	
76	2304.04-06	针板支架	Needle plate bracket	1	
77	11-90090820-01	六角头螺钉	Hexagon screw SM9/64×40 L=7.6	2	
78	2304-04-02	牙架导轨	Feed bar guide rail	1	
79	11-40110825-01	牙架导轨螺钉	Feed bar guide rail SM11/64×40 L=8	2	
80	293-04-05	挡油罩	Oil seal cover	1	
81	11-60060420-01薄	螺钉	Screw SM3/32×56 L=4	2	
82	2304-04-03	密封导架	Gasket guild bracket	1	
83	11-60080620-01	密封导架螺钉	Gasket guide bracket screw sm1/8×44 L=6	3	
84	279-05-32	密封垫	Gasket washer	2	
85	2304-04-04	护针架座	Protect needle frame	1	
86	279-02-84	五线护针板架	Five thread needle thread guard bracket	1	五线用
	279-02-84A	三、四线护针板架	Three ,four thread needle thread guard bracket	1	三、四线用
87	279-02-85	前直针后护针板	Front needle back needle thread guard	1	
88	11-40060625-01	护针板螺钉	Needle thread guard screw SM3/32 ×56 L=6	2	
89	279-02-86	后直针前护针板	Back needle front needle thread guard	1	
90	2304-04-05	针板座	Needle plate bracket	<1>	
91	279-02-83	针板定位键	Needle plate set key	<2>	
92	11-40151025-01	针板座固定螺钉	Needle plate bracket fixing screw SM15/64 ×28 L=10.6	2	
93	279-02-81	针板座橡胶垫	Needle plate bracket rubber cushion	2	
94	279-02-82	五线前护针板	Five-thread front needle thread guard	1	五线用
	279-02-82A	三、四线前护针板	Three、 four-thread front needle thread guard	1	三、四线用
95	11-40090625-01	前护针板螺钉	Front needle thread guard screw SM9/64 ×40 L=5.5	1	
96	279-02-79	五线针板	Five-thread needle plate	1	五线用
	279-02-79A	四线针板	Four-thread needle plate	1	四线用
	279-02-79B	三线针板	Three-thread needle plate	1	三线用
	206-02-07	五线厚料针板	Five-thread needle plate	1	五线厚料用
	218-02-79D	六线针板	Six-thread needle plate	1	六线用
97	11-20110920-02	针板螺钉	Needle plate screw SM11/64 ×40 L=9	2	

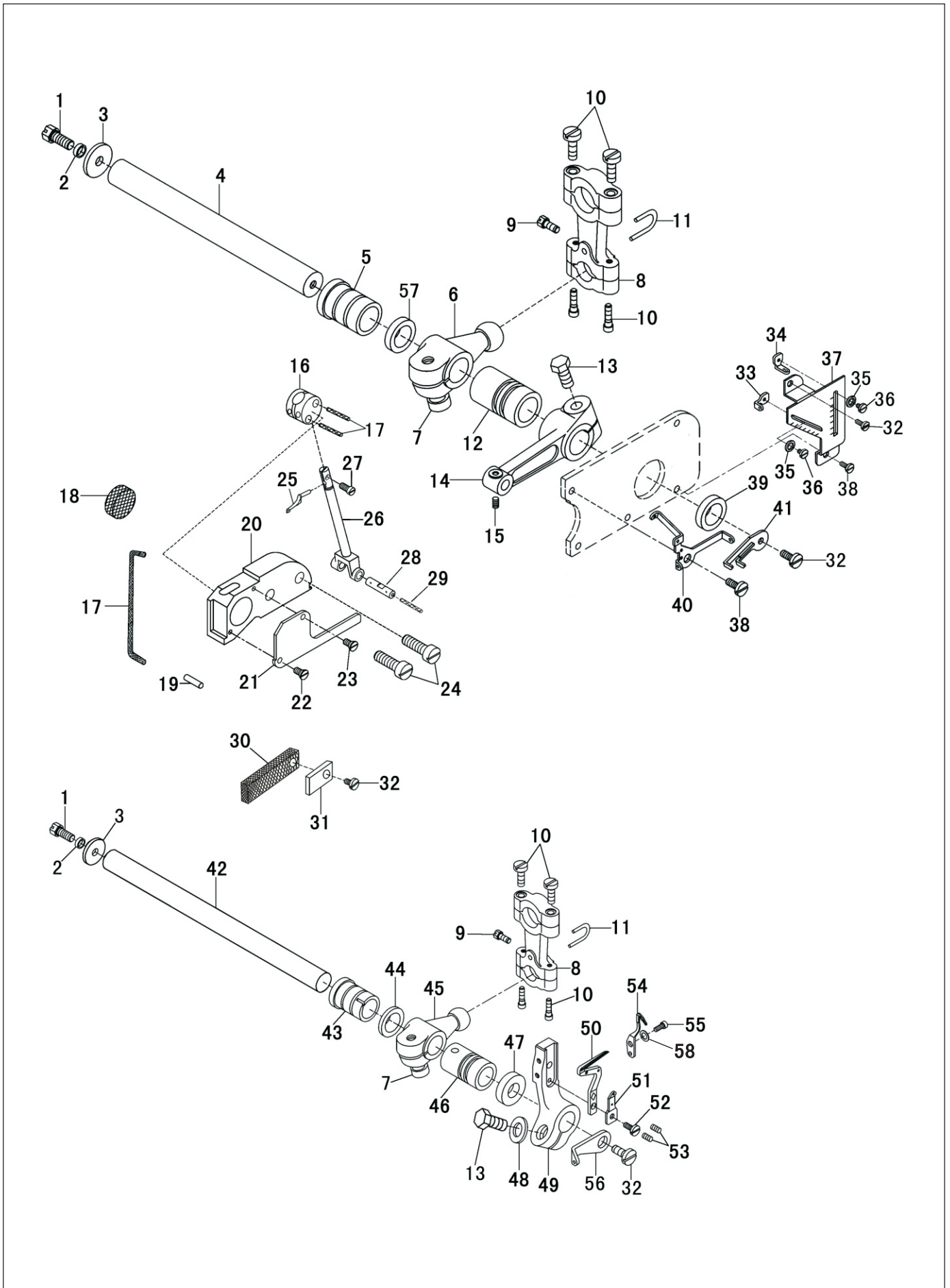
5.上下切刀部件 Upper & Lower Knife Components



5.上下切刀部件 Upper & Lower Knife Components

序号 NO.	图号 REF NO.	名称	DESCRIPTION	数量 AMT	备注 NOTE
1	279-06-10	短肖子	Short pin	1	
2	279-06-06	上切刀摆轴	Upper knife rock shaft	1	
3	32-11530170-09	油封	Oil seal	1	
4	279-06-02	上切刀摆轴右铜轴承	Upper knife rock shaft right copper bearing	1	
5	21-12115192-03	垫片	Washer	1	
6	279-06-05	上切刀曲柄销	Upper knife crank pin	1	
7	293-05-02	上切刀传动曲柄	Upper knife driving crank	1	
8	279-06-04	上切刀传动连杆	Upper knife connection link	<1>	
9	11-40091225-01	螺钉	Upper looper washer SM9/64 ×40 L=12	2	
10	11-90110820-01	开槽六角螺钉	Hexagon snap screw SM11/64×40 L=8	2	
11	11-60151522-01	圆柱头内六角螺钉	Cheese head hexagonal socket set screw SM15/64×28 L=15	1	
12	11-00140710-01	挡圈紧定螺钉	Thrust ring set screw SM7/32×32 L=6.4	2	
13	279-06-07	上切刀摆轴挡圈	Upper knife rock shaft thrust ring	1	
14	279-06-08	上切刀摆轴铜轴承	Upper knife rock shaft copper bearing	1	
15	279-06-09	油封	Oil seal	1	
16	11-90090820-01	六角头螺钉	Hexagon screw SM9/64×40 L=7.6	1	
17	21-03810080-01	垫圈	Washer	1	
18	279-06-12	上切刀	Upper knife	1	三、四、五线用
	206-02-01	上切刀	Upper knife	1	三、四、五线不用
19	279-06-11	上切刀架	Upper knife bracket	1	三、四线不用
	279-06-11A	三、四线上切刀架	Three、four-thread upper knife bracket	1	三、四线用
20	11-40110825-01	上切刀架紧固螺钉	Upper knife bracket fixing screw SM11/64×40 L=8	1	
21	293-05-01	挑线勾	Five thread upper take -up guide	1	四线不用
	293-05-01-01	挑线勾	Four thread upper take -up guide	1	四线用
22	11-40090625-01	上挑线勾固定螺钉	Upper take -up hook fixing screw SM9/64 ×40 L=5.5	2	
23	11-40110525-01	固定螺钉	Fixing screw SM11/64 ×40 L=7	1	
24	11-40090825-01D	调节螺钉	Regulating screw SM9/64 ×40 L=8	1	
25	13-60093020-01	螺母	Nut SM9/64 ×40	1	
26	279-01-47	固定板	Set plate	1	
27	279-06-13	下切刀弹簧	Knife bottom spring	1	
28	279-06-14	下切刀架	Knife bottom bracket	1	三、四线不用
	279-06-14A	下切刀架	Knife bottom bracket	1	三、四线用
29	279-06-15	定位套筒	Stopped bushing	1	
30	11-40110825-01D	下切刀架紧固螺钉	Knife bottom bracket set screw SM11/64×40 L=8	1	
31	279-06-16	下切刀	Knife bottom	1	三、四、五线用
	206-02-02	下切刀	Knife bottom	1	三、四、五线不用
32	21-04608110-01	垫圈	Washer	1	
33	279-06-17	下切刀压板	Knife bottom presser plate	1	
34	11-60112620-01	下切刀架调节螺钉	Knife bottom bracket adjusting screw SM11/64×40 L=8+18	1	

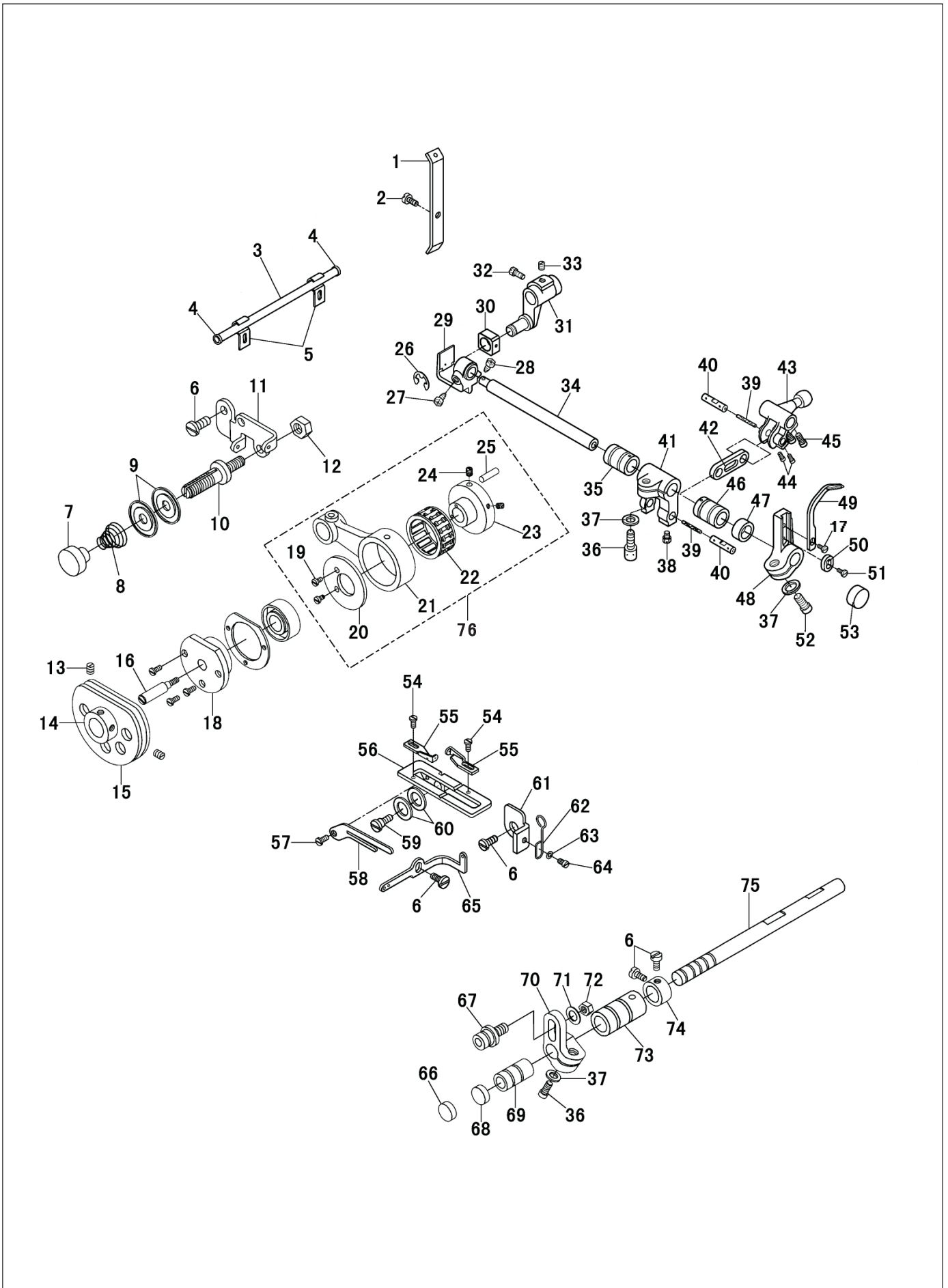
6.上下弯针部件 Upper & Lower Looper Components



6.上下弯针部件 Upper & Lower Loper Components

序号 NO.	图号 REF NO.	名称	DESCRIPTION	数量 AMT	备注 NOTE
1	11-90110820-01	六角头开槽螺钉	Cheese head hexagonal socket screw SM11/64 ×40 L=8	2	
2	22-05000000-08	弹簧垫圈	Washer	2	
3	21-04516162-03	上弯针轴垫圈	Upper looper shaft washer	2	
4	279-03-08	上弯针轴	Upper looper shaft	1	
5	2304-06-01	上弯针轴后套	Upper looper ball crank shaft back copper bearing	1	
6	279-03-04	四五线上弯针球曲柄	Four ,five thread upper looper ball crank	<1>	
7	11-60151522-01	圆柱头内六角螺钉	Thread guide washer SM15/64 ×28 L=15	2	
8	279-03-01	上下弯针球连杆组件	Upper、 lower looper ball rod complete	<2>	
9	11-60080620-01	圆柱头螺钉	Cheese head set screw SM1/8 ×44 L=6	<2>	
10	11-40091225-01	螺钉	Upper looper washer SM9/64×40 L=12	8	
11	279-03-05	上摆轴	Upper rock shaft	<2>	
12	279-03-03	上弯针球曲柄轴前轴承	Upper looper ball crank shaft front copper bearing	1	
13	11-90151523-01	连杆固定螺钉	Connection link fixing screw SM15/64 ×28 L=15	2	
14	279-03-10	上弯针滑杆连杆	Upper looper slide bar connection link	<1>	
15	11-80080312-01	连杆销固定螺钉	Connection link pin fixing screw SM1/8 ×44 L=3	<1>	
16	203-01-28	上弯针滑杆滑块	Upper looper slide bar block	<1>	
17	43-10250000-00	油线	Oil wick	<0.06>	
18	135-10-34	油毡	Oil seal	1	
19	279-05-63	销子	Feed eccentric wheel pin	1	
20	279-03-14	上弯针滑杆座	Upper looper slide bar bracket	<1>	
21	279-03-18	挡料板	Fabric guide plate	<1>	
22	11-10080620-01	拦线板螺钉	Fabric guide plate screw SM1/8 ×44 L=6	<1>	
23	11-70080420-01	拦线板螺钉	Fabric guide plate screw SM1/8 ×44 L=3.5	<1>	
24	11-40151525-01	上弯针滑杆座轴螺钉	Upper looper slide bar holder shaft screw SM15/64×28 L=14	2	
25	279-03-17	上弯针	Upper looper	1	
26	279-03-16	上弯针滑杆	Upper looper slide bar	<1>	
27	11-40090725-01	上弯针紧定螺钉	Upper looper set screw SM9/64 ×40 L=6.3	1	
28	279-03-11	连杆销轴	Connection link pin shaft	<1>	
29	43-20300000-00	油线	Oil wick	<0.015>	
30	203-01-30	油毡	Oil seal	1	
31	203-01-29	油毡压板	Press seal spring	1	
32	11-40110525-01	螺钉	Presser seal screw SM11/64 ×40 L=5	4	
33	279-03-22	右穿线板	Thread guide (right)	1	
34	279-03-21	左穿线板	Thread guide (left)	1	
35	21-03405070-01	穿线板垫圈	Connection rod washer	2	
36	11-40080425-01D	穿线板紧固螺钉	Thread guide fixing screw SM1/8 ×44 L=3.5	2	
37	279-03-23	线量调节板	Thread amount regulation graduation plate	1	
38	11-40111025-01D	螺钉	Screw	2	
39	32-11540210-09	油封	Oil seal	1	
40	279-03-19	三眼过线板	Three-hole thread guide	1	
41	279-03-20	双眼过线板	Two-hole thread guide	1	
42	279-03-46A	下弯针轴(三、四线)	Lower looper shaft	1	三、四线用
	279-03-46	下弯针轴	Lower looper shaft	1	三、四线不用
43	2304-06-02	下弯针轴后套	Lower looper bracket shaft back copper bearing	1	
44	279-03-43	下弯针轴套	Lower looper shaft copper bushing washer	1	三、四线用
45	279-03-44B	三线下弯针球曲柄	Three-thread lower looper ball crank	<1>	三、四线用
46	279-03-45	下弯针架轴前轴承	Lower looper bracket ball crank copper bearing	1	
47	32-09440190-09	油封	Oil seal	1	
48	21-06112110-01	垫圈	Washer	1	
49	279-03-48	下弯针架	Lower looper bracket	1	
50	279-03-50	下弯针	Lower looper	1	
51	279-03-51	下弯针过线	Lower looper thread guide	1	
52	279-01-116	螺钉	Hinge screw SM9/64 ×40 L=7.5	1	
53	279-03-49	定位铆钉	Position rivet	2	
54	279-02-87	后直针后护针板	Back needle back needle thread guard	1	
55	11-90091020-01	螺钉	Needle plate bracket set screw SM9/64 ×40 L=10	1	
56	279-03-52	过线板	Thread guide plate	1	
57	279.03-09	上弯针轴套	Curved needle collar block circle	1	
58	21-03405070-01	垫片	Washer	1	

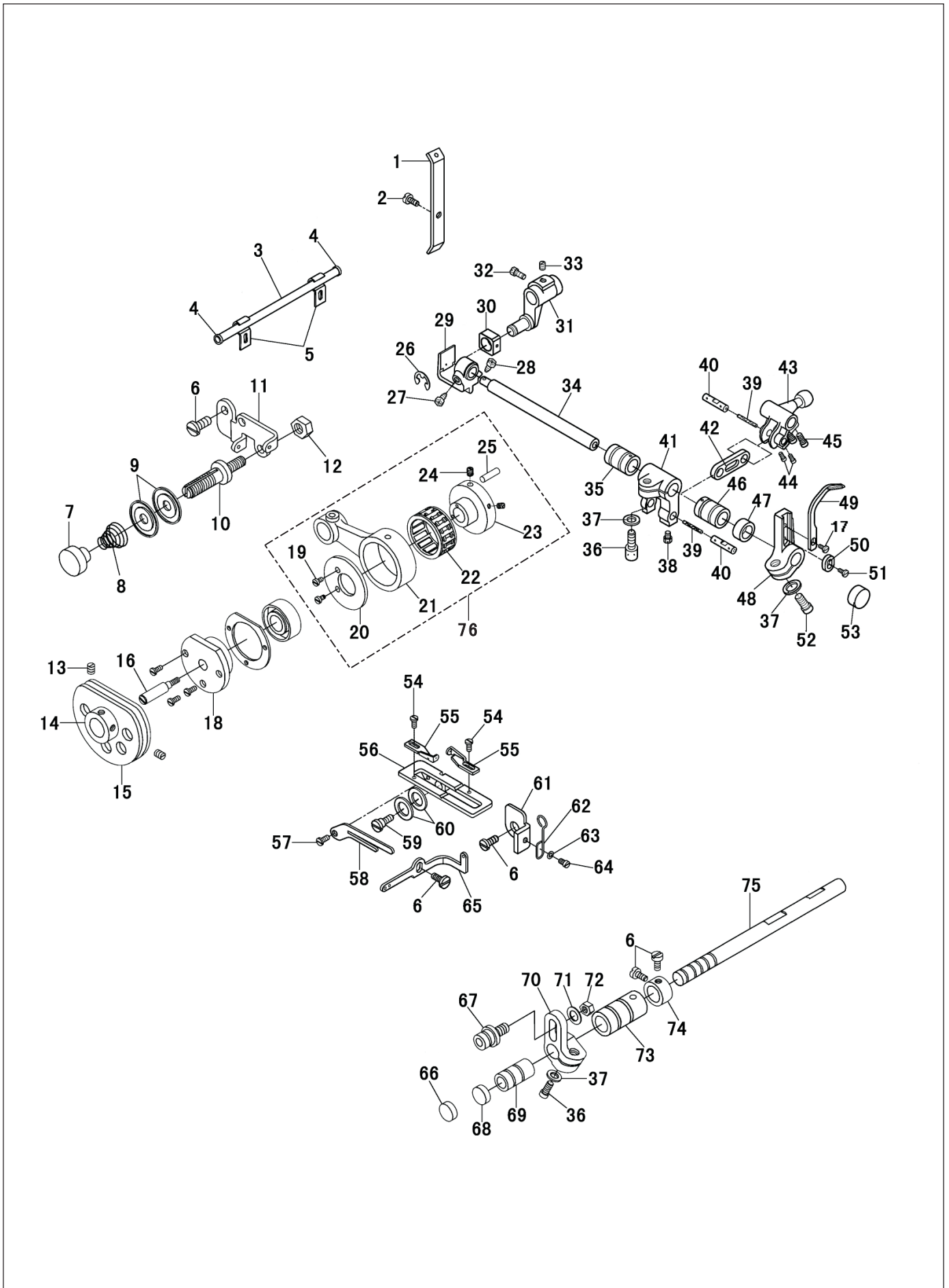
7.前弯针部件(五六线专用) Chain Looper Components(for five & six thread)



7.前弯针部件(五六线专用) Chain Looper Components(for five & six thread)

序号 NO.	图号 REF NO.	名称	DESCRIPTION	数量 AMT	备注 NOTE
1	279-04-52	前弯针导线板	Front looper thread guide plate	1	
2	11-70110620-02	压线器架螺钉	Thread guide bracket screw SM11/64x40 L=5.3	1	
3	279-04-53	过线管	Thread guide tube	<1>	
4	279-04-54	过线管套	Thread guide tube bushing	<2>	
5	279-04-55	过线管压板	Thread guide tube presser plate	2	
6	11-40110525-01	螺钉	Presser seal screw SM11/64 ×40 L=5	5	
7	279-04-60	压线螺母	Thread tension nut	1	
8	279-04-59	压线弹簧	Thread tension spring	1	
9	279-04-58	压线板	Thread tension disc	2	
10	279-04-57	压线螺钉	Thread tension post	1	
11	279-04-56	压线器架	Thread tension bracket	1	
12	13-60113020-01	压线螺钉螺母	Thread tension post nut SM11/64x40	1	
13	11-80080312-01	凸轮固定螺钉	Cam fixing screw SM1/8×44 L=3	2	
14	279-04-43	凸轮轴套	Cam bushing	<1>	
15	279-04-42	张力变换凸轮	Thread tension change cam	<1>	
16	279-04-41	凸轮轴	Cam shaft	1	
17	11-40090725-01	螺钉	Front bearing bracket screw SM9/64 ×40 L=8	1	
18	279-02-01	五线轴承座	Five-thread bearing bracket	1	
19	11-20060420-01	挡圈螺钉	Thrust ring screw SM3/32×56 L=3.8	2	
20	279-05-61	横轴曲柄连杆挡圈	Lateral crank connection link thrust ring	1	
21	279-04-31	横轴曲柄连杆	Lateral crank connection rod	1	
22	279-04-32	横轴连杆滚针轴承	Lateral connection rod needle bearing	1	
23	2304.07-01	前弯针偏心轮	Feed eccentric wheel	1	
24	11-80110512-01	紧定螺钉	Worm set rivet SM11/64 ×40 L=5	2	
25	279-05-63	销子	Feed eccentric wheel pin	1	
26	279-04-12	前弯针曲柄挡圈	Front looper crank thrust ring	1	
27	11-90111140-01	驱动座固定螺钉	Driving bracket fixing screw SM11/64×40 L=10.8	1	
28	11-80110652-01	驱动座固定螺钉	Driving bracket fixing screw SM11/64x40 L=6.3	1	
29	279-04-10	驱动座	Driving bracket	1	
30	279-04-11	前弯针滑块	Front looper block	1	
31	279-04-35	驱动曲柄	Driving crank	1	
32	11-90110520-01	螺钉	Thrust ring screw SM11/64×40 L=5.3	1	
33	11-80110512-01	螺钉	Upper cover (left) fixing screw SM11/64 ×40 L=8	1	
34	279-04-09	前弯针轴	Front looper shaft	1	
35	279-04-01	前弯针纵轴后轴承	Front looper lengthwise shaft back copper bearing	1	
36	11-60151522-01	圆柱头内六角螺钉	Cheese head hexagonal socket screw SM15/64×28 L=15	2	
37	21-06112110-01	垫圈	Washer	3	
38	11-40110825-01D	螺钉	Upper cover (left) fixing screw SM11/64 ×40 L=8	1	
39	43-20300000-00	油线	Oil wick	0.028	
40	279-04-08	前弯针连杆销	Front looper lever pin	2	
41	279-04-02	前弯针曲柄	Front looper crank	1	
42	279-04-07	前弯针连杆	Front looper lever	1	
43	279-03-44	下弯针轴球曲柄	Lower looper shaft ball crank	<1>	
44	11-40090725-01	圆柱头螺钉	Cheese head screw SM9/64×40 L=7.8	2	
45	11-60160852-01	内六角螺钉	Hexagonal socket screw SM1/4×40 L=8	2	三、四线不用
46	279-04-33	前弯针纵轴前轴承	Front looper length wise shaft front copper bearing	1	
47	32-09440190-09	油封	Oil seal	1	
48	279-04-05	前弯针架	Front looper bracket	1	
49	279-04-06	前弯针	Front looper	1	
50	279-04-15	前弯针调节垫片	Front looper adjusting washer	1	
51	11-60060520-01	前弯针定位螺钉	Front looper set screw SM3/32×56 L=5	1	
52	11-90151323-01	前弯针架紧固内六角螺钉	Front looper bracket fixing hexagonal socket screw	1	

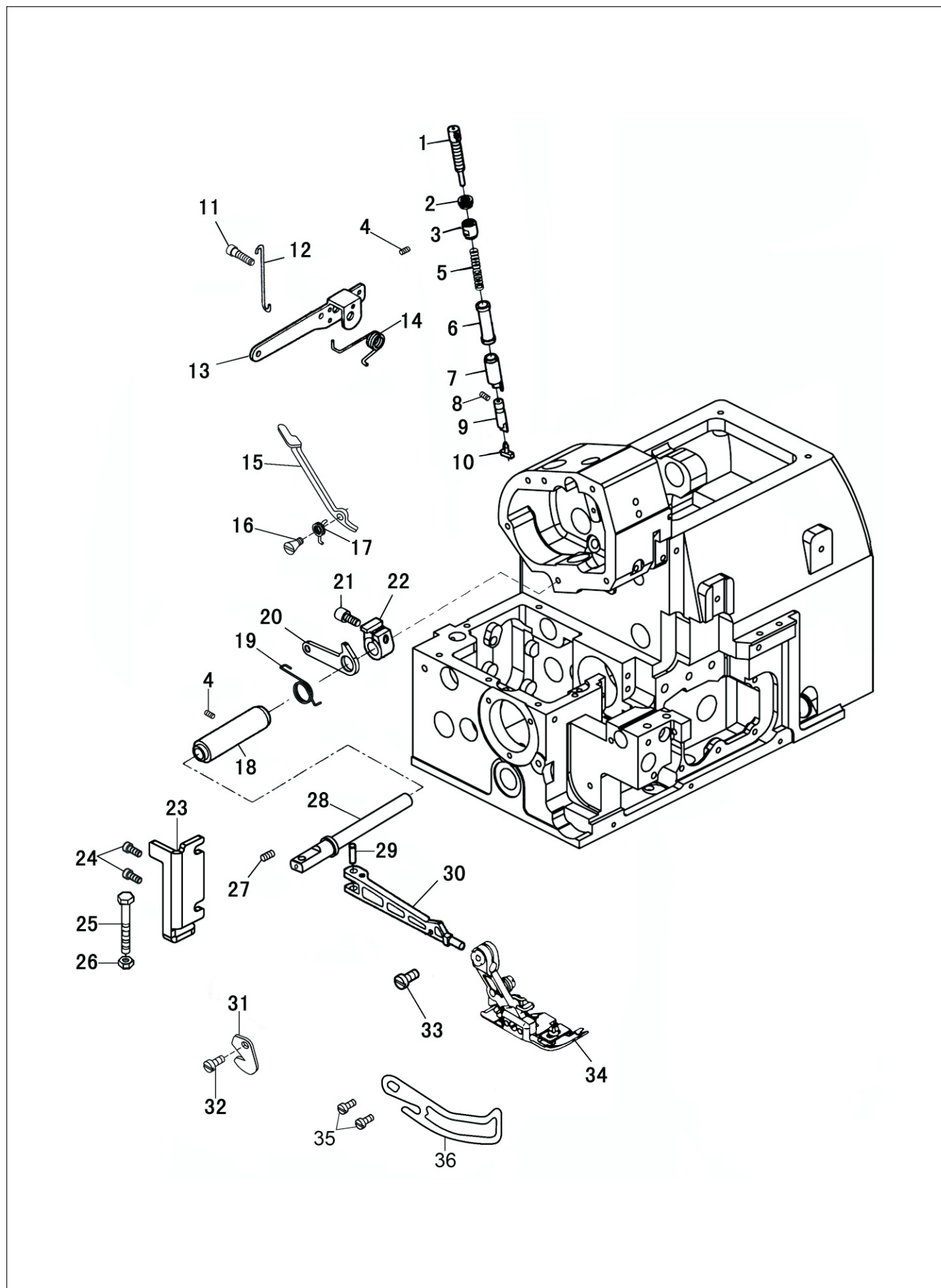
7.前弯针部件(五六线专用) Chain Looper Components(for five & six thread)



7.前弯针部件(五六线专用) Chain Looper Components(for five & six thread)

序号 NO.	图号 REF NO.	名称	DESCRIPTION	数量 AMT	备注 NOTE
53	279-04-23	三\四线油封	Three-thread oil seal	1	三、四专用
54	11-40060325-01	过线板螺钉	Thread guild plate screw SM3/32"x56 L=3	2	
55	279-04-49	过线板	Thread guide plate	2	
56	279-04-46	前弯针导线架	Front looper thread guide bracket	1	
57	11-40090725-01	导线板螺钉	Thread guild plate screw SM9/64×40 L=7.8	1	
58	279-04-48	导线板	Thread guide plate	1	
59	279-04-68	导线架螺钉	Thread guild bracket screw	1	
60	23-06503110-09	波形垫圈	Washer	2	
61	279-04-50	限位板	Direction-limited plate	1	
62	279-04-51	过线环	Thread guide hook	1	
63	21-04308090-01	垫圈	Washer	1	三、四专用
64	11-40090425-01	过线环螺钉	Thread guide hook screw SM9/64x40 L=4	1	
65	279-04-45	二眼过线	Two-hole thread guide	1	
66	279-05-17	油封	Oil seal	1	
67	279-04-38	曲柄销	Crank pin	1	
68	279-04-40	油封	Oil seal	1	
69	279-04-33	前弯针横轴铜轴承	Front looper lateral shaft front copper bearing	1	
70	279-04-34	横轴曲柄架	Lateral crank bracket	1	
71	21-06510120-01	曲柄调整销垫圈	Crank regulating pin washer	1	
72	13-60145520-01	曲柄调整销螺母	Crank regulating pin nut SM7/32×32	1	
73	279-04-36	前弯针横轴前铜轴承	Front looper lateral shaft front copper bearing (right)	1	
74	279-04-37	横轴挡圈	Lateral thrust ring	1	
75	279-04-39	前弯针横轴	Front looper lateral shaft	1	
76	2304.07-01-00	前弯针偏心轮组件	Feed eccentric wheel ASM.	1	

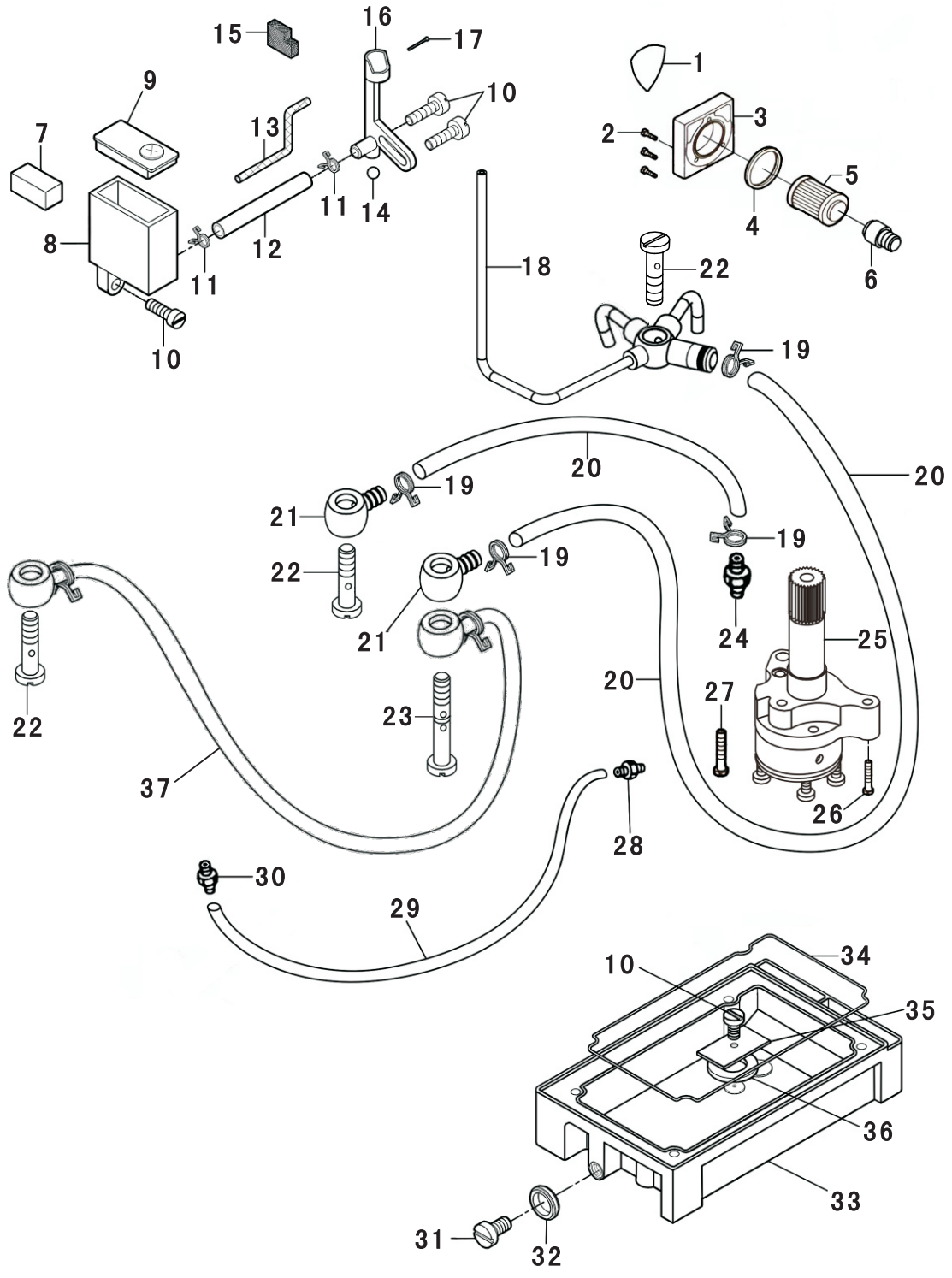
8. 抬压脚部件 Presser Foot Lifter Components



8.抬压脚部件 Presser Foot Lifter Components

序号 NO.	图号 REF NO.	名称	DESCRIPTION	数量 AMT	备注 NOTE
1	293-08-01	调压螺钉	Presser regulator screw	1	
2	293.08-02	调压螺母	Presser regulator nut	1	
3	293.08-03	调压挡圈	Presser regulator screw washer	1	
4	11-80110412-01	压脚轴套固定螺钉	Presser foot shaft bushing fixing screw SM11/64×40 L=4.8	2	
5	293-08-04	脚杆弹簧	Presser spring	1	
6	293-08-05	抬杆弹簧套	Presser bar cover	1	
7	293-08-06	压杆轴套	Presser bar bushing	1	
8	41-20301600-00	压杆销	Presser bar pin	1	
9	293-08-08	压杆头	Presser bar tob	1	
10	209-12-32	压杆头固定塑料销	Presser bar fixed plastic pin	1	
11	279-07-30	抬压脚杠杆轴位螺钉	Presser foot lifting lever link cheese head set screw	1	
12	279-07-21	吊钩	Presser foot lifting hook	1	
13	279-07-19	抬压脚杠杆	Pressed foot lifting lever link	1	
14	279-07-20	杠杆弹簧	Presser foot lifting lever link spring	1	
15	2310-08-08	抬压脚扳手	Hand lifter lever	1	
16	279-01-60	抬压脚扳手固定螺钉	Hand lifter lever screw	1	
17	293-08-13	抬压脚扳手簧	Hand lifter lever spring	1	
18	293-08-14	压脚轴套	Presser foot shaft bushing	1	
19	2304-08-01	抬压脚轴杠杆簧	Lifting lever presser shaft spring	1	
20	2310-08-09	抬压脚轴杠杆	Lifting lever presser shaft	1	
21	12-60601422-01	螺钉	Screw M6 L=14	1	
22	209-12-06	抬压脚曲柄	Lifing presser foot shaft lever	1	
23	2310-08-07	杠杆限位座	Lever limit	1	
24	11-40111025-01D	螺钉	Screw	2	
25	12-90501723-01	抬压脚杠杆定位螺钉	Presser foot lifting lever link position screw	1	
26	14-60504020-01	螺母	Nut SM11/64×40	1	
27	11-80090412-01	螺钉	Hinge pin screw SMm9/64 ×40 L=4	1	
28	2304-08-02	抬压脚轴	Lifing presser foot shaft	1	
29	293-08-19	抬压脚销	Presser foot lifting pin	1	
30	2310-08-10	抬压脚臂	Presser foot lifting arm	1	
31	279-07-15	割线刀	Thread cutter	1	
32	11-40080425-01D	螺钉	Spring stoper screw SM1/8×44 L=4	1	
33	11-00090620-01	螺钉	Screw SM9/64×40 L=6.5	1	
34	2310-08-13-00	压脚组件	Presser foot complete	1	三线用
	2310-08-14-00	压脚组件	Presser foot complete	1	四线用
	2310-08-12-00	压脚组件	Presser foot complete	1	五线用
	2310-08-15-00	压脚组件	Presser foot complete	1	五线厚料用
	2310-08-16-00	压脚组件	Presser foot complete	1	六线用
35	11-40580525-01	螺钉	Screw	<2>	
36	2310-08-11	护指器	Upper needle thread guard	<1>	
	2310-08-11H	护指器	Upper needle thread guard	1	厚料用

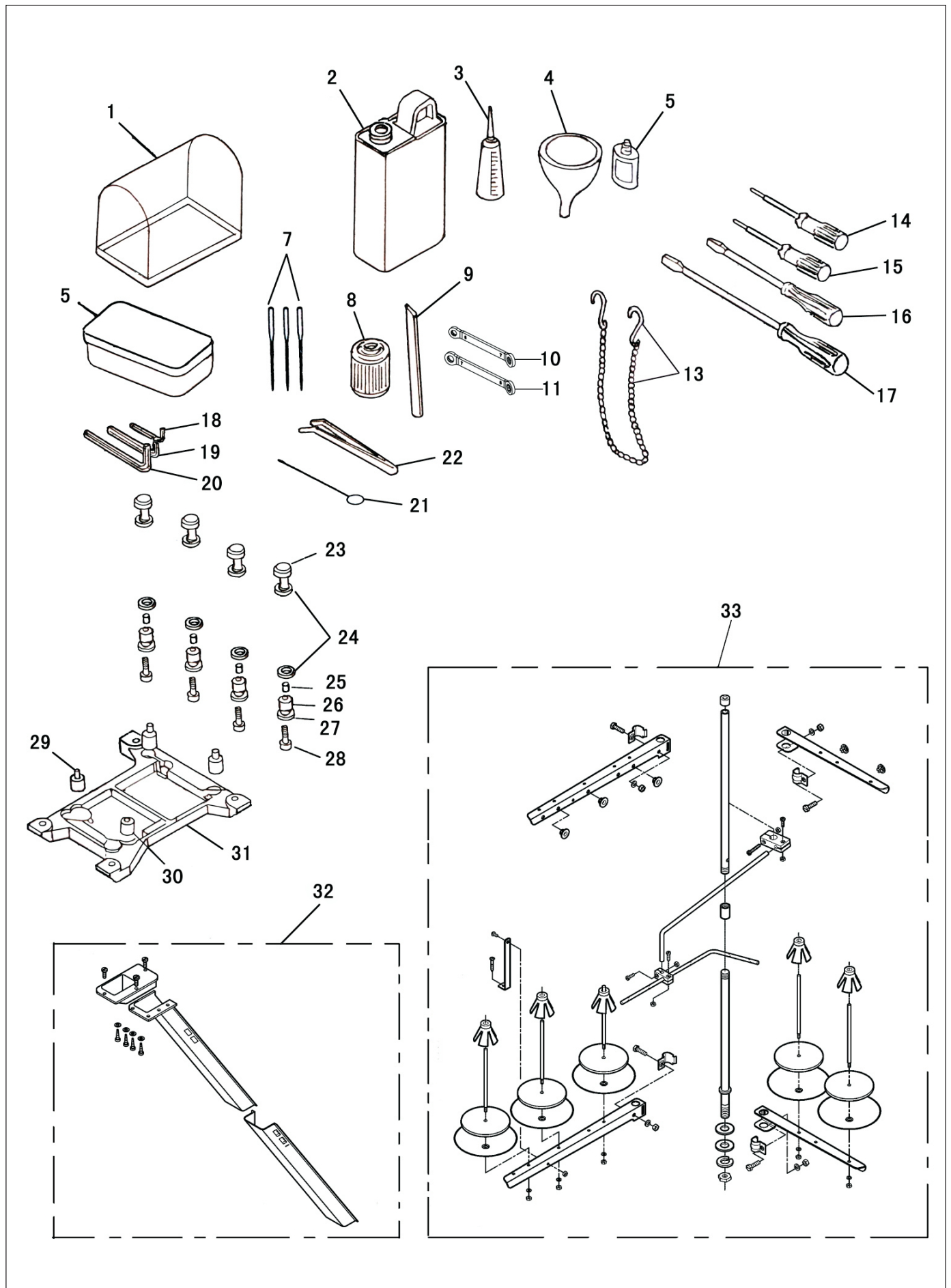
9. 供油部件 Lubrication Mechanism Components



9.供油部件 Lubrication Mechanism Components

序号 NO.	图号 REF NO.	名称	DESCRIPTION	数量 AMT	备注 NOTE
1	44-0000008-00	指示牌	Indicator plate	1	
2	11-40111525-01	滤油器盖固定螺钉	Oil filter cover fixing screw SM11/64×40 L=15	3	
3	279.08-25	滤油器盖	Oil filter cover	1	
4	31-39035000-09	油封	Oil seal	1	
5	279.08-23	纸质滤油器	Space oil cleaner	1	
6	279.08-22	滤油器定位接头	Oil filters positioning connector	1	
7	279.09-12	滤油毡	Filter linoleum	1	
8	279.09-11	小油箱	Small tank	1	
9	279.09-13	小油箱盖	The flap raises little	1	
10	11-40110825-01D	固定螺钉	Fixed screw	4	
11	279.09-10	油管卡簧	Tubing card spring	2	
12	42-07005000-00	油管	Oil tube	0.05	
13	43-20300000-00	油线	Filter oil seal	0.05	
14	279.09-19	钢球	Small oil tank	1	
15	279.09-08	油毡	Small oil tank cover	1	
	279.09-08B	油毡	Fixing screw SM11/64 ×40 L=8	1	
16	279.09-07B	机针冷却器	Oil tube	1	五、六线用
	279.09-07	三、四线机针冷却器	Oil wick	1	三、四线用
17	279.09-20	大头针	Ball	1	
18	2304.09-04	油嘴	Oil seal	1	
19	301.16-19	卡簧	Card spring	4	
20	42-07005000-00	油管	Needle cooler	0.2	
21	301.16-21	油管接头	Three、four-thread needle cooler	2	
22	279.08-15	螺钉	Pin	3	
23	215.08-36	油管连接螺钉（双孔）	Tubing connection screw (Double hole)	1	
24	1224.10-38	油管连接螺钉	Tubing connection screw	1	
25	2304.09-03	油泵组件	Oil pump installing base	1	
26	11-70111920-01	螺钉	Screw	1	
27	11-60152220-01	螺钉	Screw	1	
28	293.09-03	螺钉	Screw	1	
29	42-04002500-00	油管	Oil tube	0.08	
30	510.10-14	铜螺钉	Copper screw	1	
31	11-70241220-01	放油螺钉	Put oil screw SM3/8×28 L=12	1	
32	279.08-34	油封	Oil seal	1	
33	279.08-33	油盘	Oil reservoir	1	
34	279.08-30	油盘油封	Oil reservoir gasket	1	
35	279.02-65	磁铁座	Magnet installing base	1	
36	279.08-31	磁铁	Magnet	1	
37	279.08-11-00	油管组件	Tubing assembly	1	

10.附件 Accessories Components



10.附件 Accessories Components

序号 NO.	图号 REF NO.	名称	DESCRIPTION	数量 AMT	备注 NOTE
1	279.11-31	附件箱	Safety bushing	1	
2	101-12-21	大油壶	Oil pot	1	
3	279-11-18	小油壶	Small oil pot	1	
4	279-11-17	漏斗	Filler	1	
5	279-11-19	硅油壶	Silicone oil box	1	
6	279-11-20	附件袋	Accessories box	1	
7	279-02-30	DC×27 11#机针	14#needle	3	三四线用
	279-02-30A	DC×27 14#机针	11# needle	3	五六线用
	206-02-08	DC×27 18#机针	18#needle	3	五线厚料用
8	279-08-23	纸质滤油器	Space oil cleaner	1	
9	279-06-16	下切刀	Knife bottom	1	三四五线用
10	2304-11-01	梅花型双头扳手(6-7)	Two-head driver	1	
11	2304-11-02	梅花型双头扳手(7-8)	Two-head driver	1	
13	279-11-12	链条	Chain	<1>	
	279-11-11	链条钩	Hook	<2>	
14	279-11-29	内六角扳手(1.5)	Hexagon wrench(1.5)	1	
	279-11-27	内六角扳手(1.6)	Hexagon wrench(1.6)	1	
15	279-11-28	内六角扳手(2)	Hexagon wrench(2)	1	
16	101-12-16	螺丝刀(中)	Screw driver(middle)	1	
17	101-12-15	螺丝刀(大)	Screw driver(large)	1	
18	301-20-26	内六角扳手(3)	Hexagon wrench(3)	1	
19	301-20-29	内六角扳手(5)	Hexagon wrench(5)	1	
20	301-20-30	内六角扳手(6)	Hexagon wrench(6)	1	
21	279-11-21	线勾	Stitch hook	1	
22	279-11-24	镊子	Tweezer	1	
23	279-11-02	托盘固定螺套	Bracket plate set bolt	4	
24	279-11-05-02	托盘垫片	Washer	8	
25	279-11-04	台板托盘连接内垫	Lifter table bracket plate connecting inner washer	4	
26	279-11-03	台板托盘连接垫	Lifter table bracket plate connecting washer	4	
27	279-11-05-01	托盘连接垫片	Bracket plate washer	4	
28	279-11-05	托盘螺钉	Bracket plate screw	4	
29	279-11-06	机头防震销垫片	Machine head shockproof pin washer	3	
30	279-11-07	机头防震垫	Machine head shockproof washer	1	
31	279-11-01	拾板托盘	Lifter table bracket plate	1	
32	279-11-08-00	废料漏斗组件	Flot ASM.	1	
33	279-12-05	五线架组件	Five-thread standing device ASM.	1	五线用
	279-12-04	四线架组件	Four-thread standing device ASM.	1	四线用
	279-12-03	三线架组件	Three-thread standing device ASM.	1	三线用
	279-12-06	六线架组件	Six-thread standing device ASM.	1	六线用

产品标准号: QB/T1515-2005

获行业首家 全国质量奖

GEMSY GAINED CHINA QUALITY AWARD -- THE FIRST ONE TO WIN THIS AWARD IN SEWING MACHINE FIELD

全国服务热线: 800-8576-822

SERVICE HOTLINE: 800-8576-822

GEMSY 宝石  **中国驰名商标**  **中国名牌产品**  **中国出口名牌**  **全国用户满意产品**           

地址: 中国浙江省台州市东环大道638号 P.C: 318000

国内营销部: DOMESTIC SALES DEPARTMENT

TEL: 0576-88201401 88202041

FAX: 0576-88202667 88203211

Http://www.gemtsy.com

ADD: NO.638 DONGHUAN ROAD, TAIZHOU, ZHEJIANG, CHINA

国际贸易部: INTERNATIONAL TRADE DEPARTMENT

TEL: 0086-576-88201479 88201471 88207338

FAX: 0086-576-88202667 88203211

E-mail : gemtsy@gemtsy.com