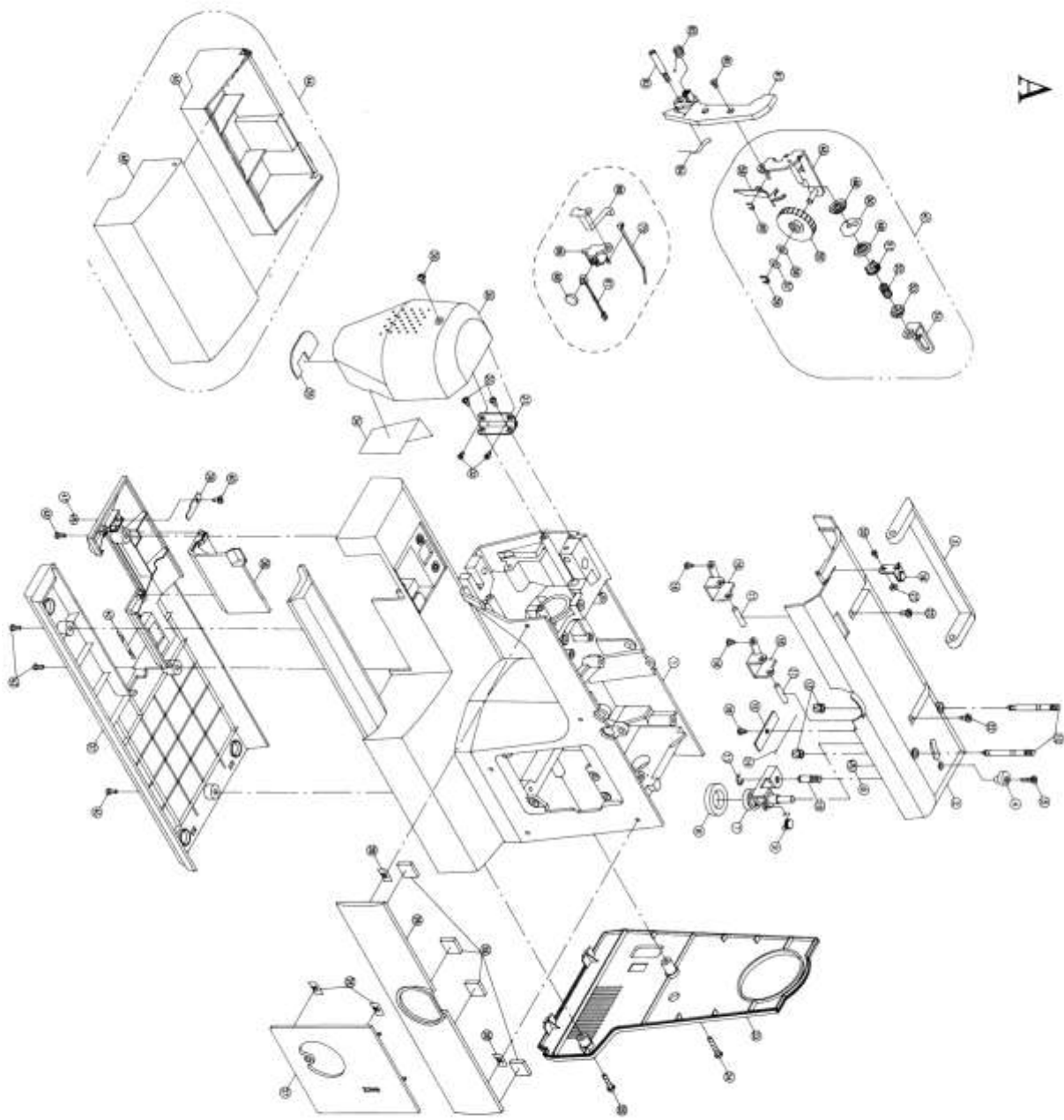


# QUEEN 690

# A

No.	Part No.	Description
1	K80015211	Arm base complete (for electronic model)
2	K90015211	Arm base complete (for electronic model)
3	S10163211	Arm top cover
4	S10173211	Handle
5	K81683001	Bobbin winder stopper
6	004106162	Set screw (9/64±.02 t=3)
7	004706013	Nut (9/64±.04 t=3)
8	S40065000	Bobbin winder crank complete
9	K81673000	Bobbin winder rubber ring
10	K81643003	Bobbin winder crank spring
11	K81433002*	Bobbin winder stopper shaft
12	003010053	E-ring (E-5)
13	K81563001	Spool pin
14	K81483002*	Spool pin bushing
15	S10333000	Spool pin spring
16	S10353006	Spool pin spring holder plate
17	004240166	Set screw (M4±.8)
18	H13083003	Handle pin
19	K81663002	Handle stopper plate
20	S10325000	Bobbin winder thread guide complete
21	004230076	Set screw (M3±.5)
22	004250151	Nut (M3 t=2.3)
23	S10233211	Set screw (M5±.10)
24	S10243211	Motor drive belt cover (for 220V-240V)
25	S10193211	Motor drive belt cover (for 100/120V)
26	S10223211	Motor drive belt cover (for 100/120V)
27	S30013211	Motor drive belt cover (for 100W E)
28	004240086	Motor drive belt cover set screw (M4±.20)
29	004240146	Motor drive belt cover set screw (M4±.15)
30	003070043	Front panel (1)
31	S10313000	Front panel stopper (FSK-4)
32	S10143211	Front panel (1) tape
33	K81425000	Face plate
34	004230195	Set screw (M3±.10)
35	004106202	Set screw (9/64±.02 t=7)
36	K81753000	Heat resistant plate
37	S10293000	Face plate shieldink plate (for 220V-240V)
38	004240066	Set screw (M4±.8)
39	K80053211	Free arm base
40	K80123211	Free arm base (non drop feed model used)
41	K80063211	Hook cover
42	H70813003	Hook cover spring
43	004240056	Set screw (M4±.6)
44	0041840022	Nut (M4 t=3)
45	028380008	Drop feed indicatink plate drop
46	004240106	Set screw (M4±.8)
47	K80075211	Sewink table complete
48	K80083211*	Sewink table body
49	K80093211*	Sewink table body cover
50	S10025211	Dial tension complete
51	S1003002*	Dial tension supporter plate
52	K80333001*	Dial tension disc
53	K80343001*	Dial tension disc washer
54	130503000*	Dial tension spring nut
55	K82123000*	Dial tension spring
56	K50193000*	Dial tension spring regulator nut
57	S10073003*	Dial tension plate
58	S10083211*	Dial tension knob
59	004500390	Washer (W-5)
60	004300376	Washer (5.5±.11±.0.5)
61	003010043	E-ring (E-4)
62	K80353002*	Dial tension waft plate
63	S10183211	Dial tension supporter plate cover
64	K80333000	Thread guide (1) set screw
65	004230136	Thread guide (1)
66	008184211	Set screw (M3±.8)
67	008183301*	Start/stop switch ass'y holder (for 100W E)
68	0082609436	Start/stop switch ass'y (for 100W E)
69	002225023	Start/stop push button (for 100W E)
70	0020207129	Cord holder (for 100W electronic)
		Cord clip

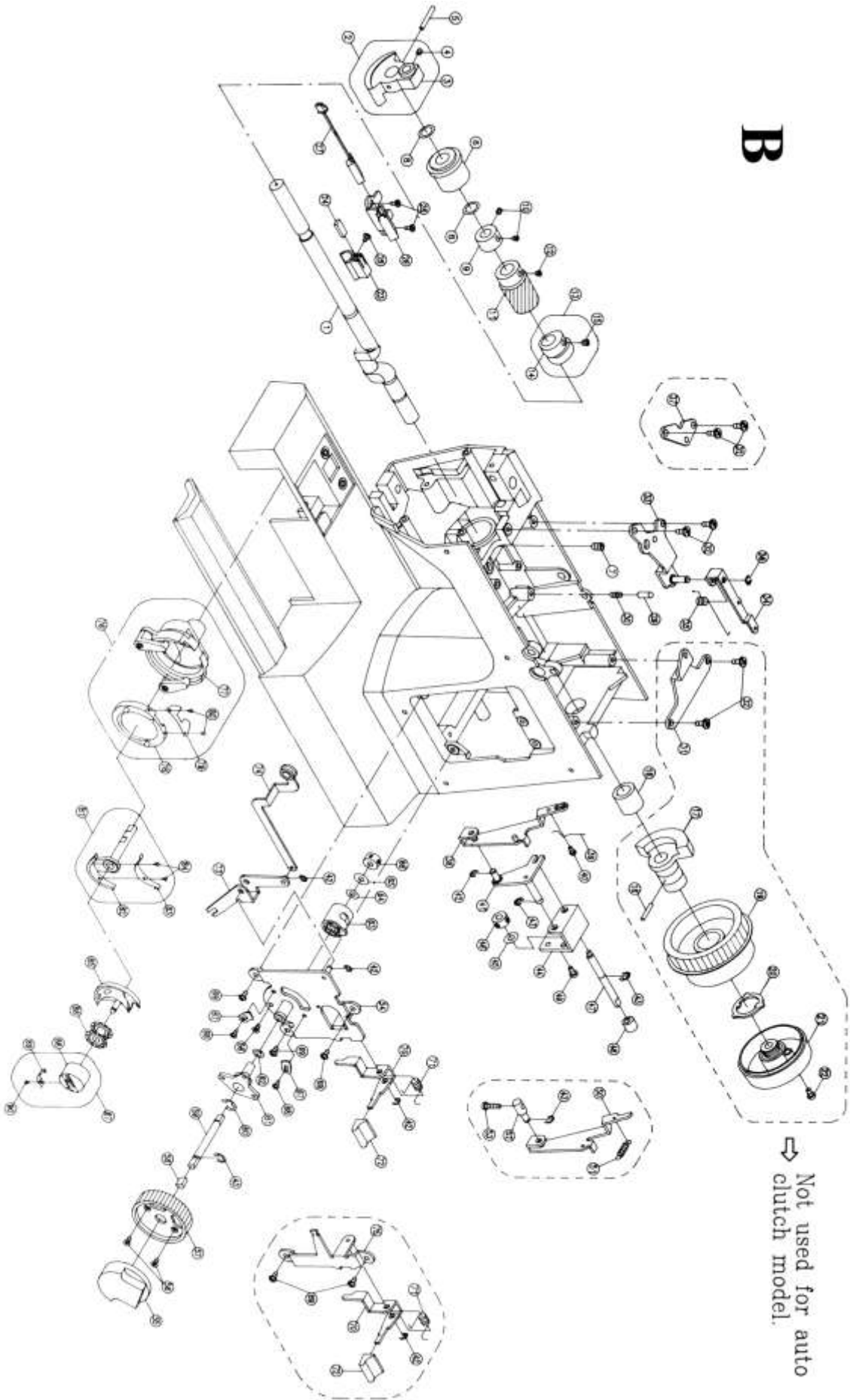


A

# B

No.	Part No.	Description
1	K80233000	Arm shaft (only for electronic)
2	K90043000	Arm shaft balance complete
3	H70215001	Arm shaft balance
4	H70223001*	Set screw (15/64x28x8)
5	003045524	Arm shaft balance pin (3.5x24)
6	H10773000	Arm shaft bushing (1)
7	004400250	Washer (13x20x0.25)
8	H10793003	Arm shaft collar
9	004250023	Set screw (M4x5)
10	K80243000	Arm shaft worm
11	S80013003	Arm shaft worm (only for N635)
12	004240503	Set screw (M4x4)
13	H10825000	Feed cam complete
14	H10833000*	Feed cam (15/64x28x11)
15	004110033*	Set screw (M4x8)
16	H10893000	Arm shaft bushing (2)
17	K80273000	Hand wheel bushing
18	003043018	Hand wheel bushing pin (3x18)
19	K80253211	Hand wheel
20	004240452	Hand wheel stop motion clamp washer
21	S10203211	Hand wheel stopper dial
22	004106141	Stop motion screw (Steel) 9/64x40x7
23	008178901	Hand wheel magnet (Frame for Electronic)
24	J70193000	Hand wheel magnet (for 100V Electronic)
25	004240106	Set screw (M4x8)
26	008181901	Reed switch holder (for 100V Electronic)
27	008180901*	Reed switch ass'y (for 100V Electronic)
28	004240056	Set screw (M4x6)
29	K81013000	Settling cam lock pin
30	K80913003	Settling cam lock pin spring
31	K81703003	Top cover supporter plate (2)
32	004250151	Set screw (M5x10)
33	No. 33-38	Only for N620, N650, N690, N635
34	K82195003	Top cover supporter plate (A)
35	K80865003	Pattern controller plate
36	003010033	Pattern controller plate spring
37	K81693003	E-ring (E-3)
38	No. 38-49	Top cover supporter plate (1)
39	K80545003	(Only for N630, N630)
40	K81973003	Feed regulating frame plate
41	004230016	Feed regulating frame plate
42	K81836003	Set screw (M3x5)
43	003010033	B.H. adjusting lever
	003010043	E-ring (E-3)
		E-ring (E-4)
44	K81863003	B.H. adjusting frame
45	004500140	Wave washer (W-6)
46	K81896000	B.H. adjusting shaft collar complete
47	K81823003	B.H. adjusting knob shaft
48	K81813211	B.H. adjusting knob
49	004240066	Set screw (M4x8)
50	No. 50-53	Only for N630
51	K82033003	Feed regulating frame plate
52	N80163003	Feed regulating frame plate spring
53	004240136	Set screw (M4x12)
54	No. 54-74	Only for N620, N650, N690, N635
55	K80585003	Feed regulator base plate
56	004240406	Feed regulator dial
57	S1010211	Set screw (M4x8)
58	003368003	Zirk width dial
59	K80633003	Feed regulator dial spring
60	003010083	Feed control cam shaft
61	K80635000	E-ring (E-8)
62	004500500	Zirk width control plate
63	K80625000	Wave washer (W-10)
64	004500140	Feed control cam
65	004400190	Wave washer (W-6)
66	K81896000	Flat washer (6.2x14x0.5)
67	K80673003	Feed control cam collar complete
68	004230076	Zirk width stopper
69	004240056	Set screw (M3x5)
70	K800833003	Set screw (M4x6)
71	K800933003	Reverse lever
72	S10093211	Reverse lever spring
73	K80763003	Reverse button
74	K80745003	Zirk width adjusting plate
75	N800095003	Zirk width lever
76	H70455000	Feed regulator base plate (only for N630)
77	H70463002*	Open shuttle race complete
78	H71103001*	Open shuttle race
79	H71083002*	Shuttle hook holder
80	H71053003*	Shuttle hook holder spring
81	K81125000	Shuttle hook holder spring screw
82	K81123002*	Shuttle driver complete
83	K81143005*	Shuttle driver
84	004103043*	Shuttle driver spring
85	H71173000	Shuttle driver spring screw
86	H71193000	Shuttle hook (4.6mm)
87	H71185000	Shuttle hook
88	H71186001*	Bobbin
89	H13803001*	Bobbin case complete
90	H13973002*	Bobbin case spring set screw

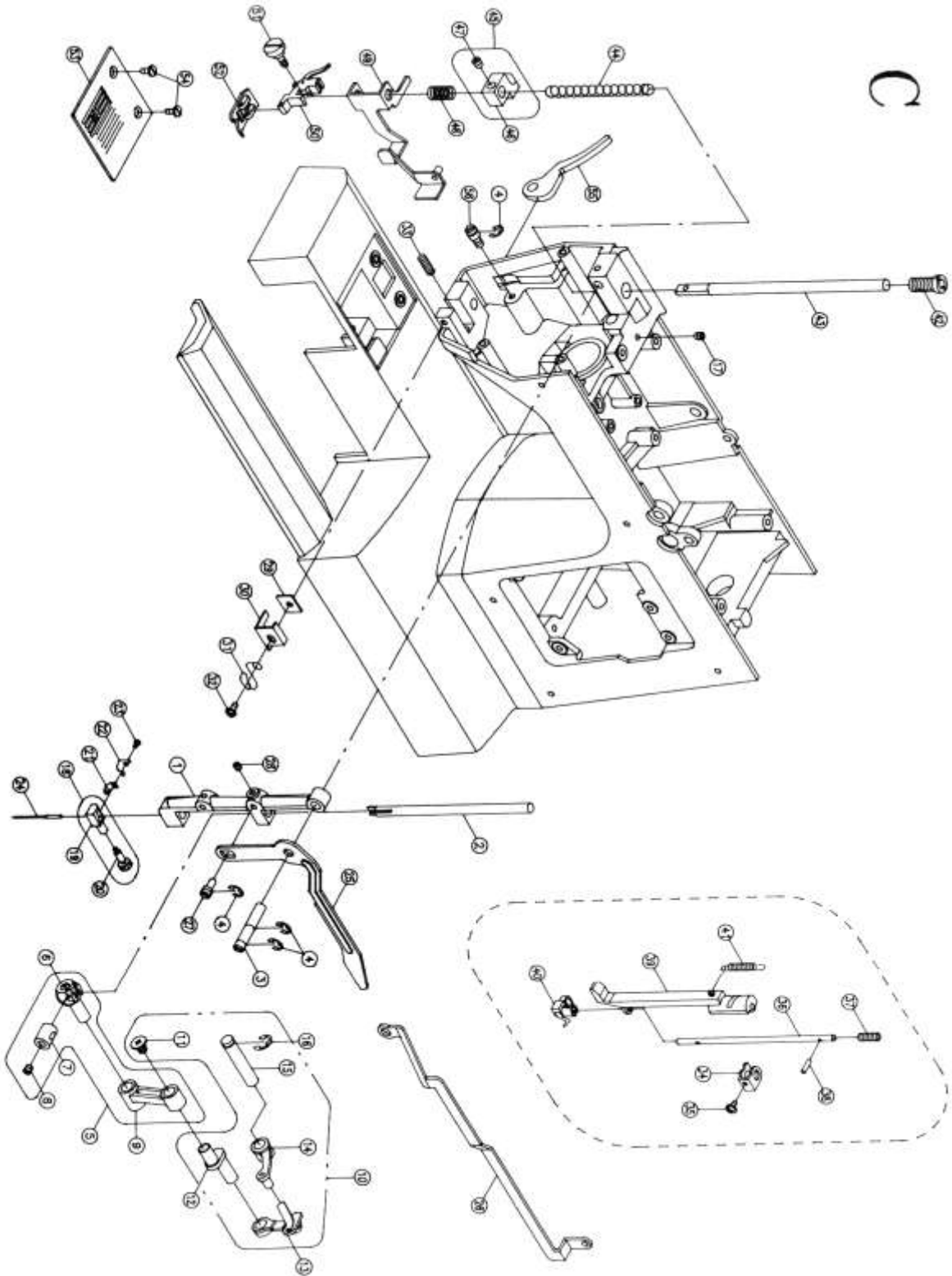
**B**



Not used for auto  
⇨ clutch model.

C

No.	Part No.	Description
1	K82553002	Needle bar supporter (for auto threader mode1)
1	K930053002	Needle bar supporter (for auto threader mode1)
2	J30123000	Needle bar
2	K930043000	Needle bar (for auto threader mode1)
3	K80173003	Needle bar supporter pin
3	N80223003	Needle bar supporter pin (only for N830)
3	M80133000	Needle bar supporter pin (Only for auto threader mode1)
4	003010053	E-ring (E-5)
5	H10235000	Needle bar crank rod complete
6	H10253000#	Needle bar bracket (1)
7	H10263000#	Needle bar bracket (2)
8	00410702#	Set screw (1/64±40±4.5)
9	H10243000#	Needle bar crank rod
10	K80195000	Thread take up lever complete
11	004106013#	balance pin left handed set screw
12	H70123000#	Arm shaft balance pin
13	J30203001#	Thread take up lever (1)
14	H10686001#	Thread take up lever (2)
15	H10423000#	Thread take up lever supporter shaft
16	003010063	E-ring (E-6)
17	004250016	Set screw (M5×5)
18	J30135000	Needle clamp complete
19	J30143002#	Needle clamp
20	H13223002#	Needle clamp set screw
21	K12573000	Needle guide plate (only for N830 Japan)
22	H10223000	Needle bar thread guide
23	004103011	Set screw (3/32±56±4)
24	006043098	Needle (90#)
24	006041748	Singer needle (14#) for Japan
25	K80183003	Needle bar driving rod
25	S30033003	Needle bar driving rod (for electronic mode1)
26	N80013003	Needle bar driving rod (only for N830)
27	K930083000	Needle bar driving rod pin
28	004107013	Set screw (1/64±40±4)
28	004106233	Set screw (9/64±40±5)
29	H10453000	(Only for auto threader mode1)
30	H10443002	Needle bar supporter stopper washer
31	K80413000	Needle bar supporter stopper
32	004240056	Thread guide (2)
33	H50583003	Set screw (M4×6)
33	No. 34-41	Needle bar supporter spring
34	H70073003	Only for auto threader mode1
35	004230016	Auto threader stopper (1)
35	H70025000	Set screw (M3×6)
36	H70053003	Auto threader shaft
37	H70033000#	Auto threader shaft spring
38	H70063000	Auto threader shaft pin
39	H70085000	Auto threader lever
40	H70093000	Auto threader
41	Z10973001	Auto threader lever spring
42	J30273004	Presser bar regulating screw
43	H71043003	Presser bar
44	H10525000	Presser bar spring
45	H10533002#	Presser bar bracket complete
46	004280023	Presser bar bracket
47	H10723003	Set screw (M6×5)
48	K90085003	Tension lever lifter spring
49	H10575000	Tension lever lifter
50	M80145000	Shank complete
50	004106021	Shank complete (for auto threader mode1)
51	004106211	Shank complete screw (for auto threader mode1)
51	006056008	Shank complete screw (for auto threader mode1)
52	K82533004	Zir zak presser foot complete
53	004107031	Needle plate
54	H10863001	Needle plate complete set screw
55	004250173	Presser bar lifter lever
56		Presser bar lifter lever set screw

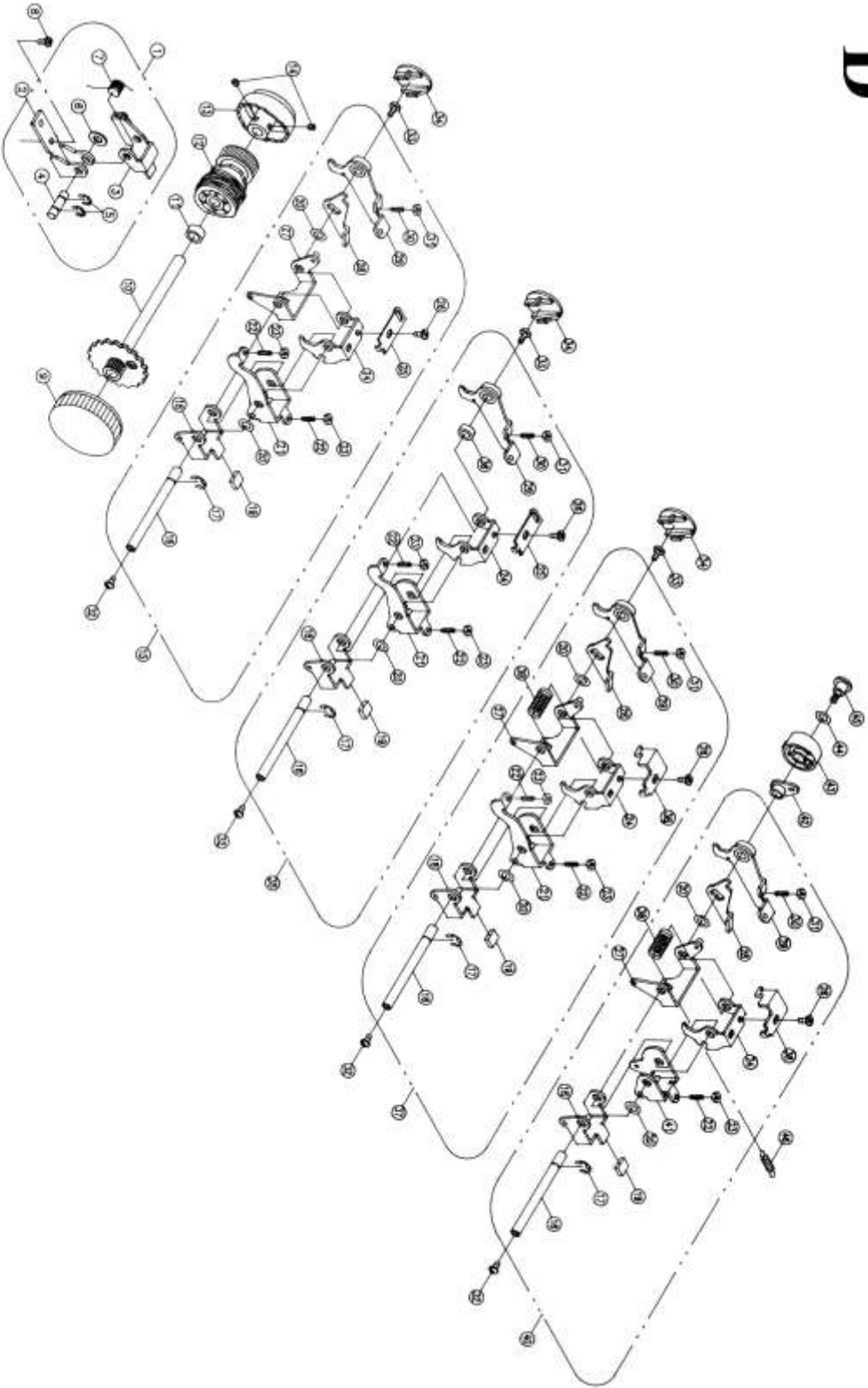


# D

No.	Part No.	Description
1	No.1-8	Only for M620, M650, M660, M690, M695
2	S80115000	Zir zak adjusting plate complete
3	K80783003*	Zir zak adjusting plate
4	S80083003*	Zir zak adjusting plate
5	K80803003*	Zir zak adjusting shaft
6	003010043	E-trim (E-4)
7	004300156	Washer (6.4*13*1)
8	K80813003*	Zir zak adjusting shaft sprink
9	004240056	Set screw (M4*6)
10	S50025000	Selector dial
10	S20015000	Selector cam (A) (only for M620, M650)
10	S40015000	Selector cam (A) (only for M660)
10	S10225000	Selector cam (A) (only for M680)
10	S80035000	Selector cam (A) (only for M690)
11	K80833003	Selector cam (A) (only for M695)
12	K80843000	Selector cam shaft collar
12	S80023000	Pattern cam (only for M695)
13	S70015000	Selector cam (B) (only for M620)
13	N50025000	Selector cam (B) (only for M650)
13	N60025000	Selector cam (B) (only for M660)
13	N80075000	Selector cam (B) (only for M680)
13	S10365000	Selector cam (B) (only for M690)
13	S80015000	Selector cam (B) (only for M695)
14	004240503	Set screw (M4*4)
15	S10275000	Pattern cam contact complete (for M690)
15	S80095000	Pattern cam contact complete (for M695)
16	K81043003*	Pattern cam contact shaft
17	003010053	E-trim (E-5)
18	S10246003*	Zir zak drive arm
19	K82173000*	Zir zak drive arm tube
20	004300333	Washer (6.7*12*0.5)
21	K80956003*	Finger guide plate (only for M690)
21	S90066003*	Finger guide plate (only for M695)
22	004106053*	Set screw (9/64*40*11)
23	004706013*	Nut (9/64*40 t=3)
24	K80973003*	Pattern cam contact
25	K80983003*	Pattern cam contact lever
26	004240056	Set screw (M4*6)
27	K80996003*	Feed cam contact (only for M690)
27	S80070003*	Feed cam contact (only for M695)
28	K81003003*	Feed cam contact guide plate
29	K81016003*	Super stretch feed crank
30	004240423	Set screw (M4)
31	004840022	Nut (M4 t=3)
32	004240111	Pattern cam contact shaft set screw (1)
33	004240291	Pattern cam contact shaft set screw (2)
34	K81873211	Needle position crank shaft cover
35	S50025000	Pattern cam contact complete (Only for M620, M650)
36	N50043003*	Feed cam contact collar
37	S20025000	Pattern cam contact complete (for M660)
38	N80123003*	Pattern cam contact lever
39	N80233003*	Pattern cam contact shaft sprink
40	S40025000	Pattern cam contact complete (for M680)
41	N80116003*	Finger guide plate
42	N80203000*	B.H. adjusting shaft
43	N80135211	B.H. adjusting knob
44	004500490	Wave washer (W-8)
45	004240433	Pattern cam contact shaft set screw (2)
46	K82033003	Feed cam contact sprink

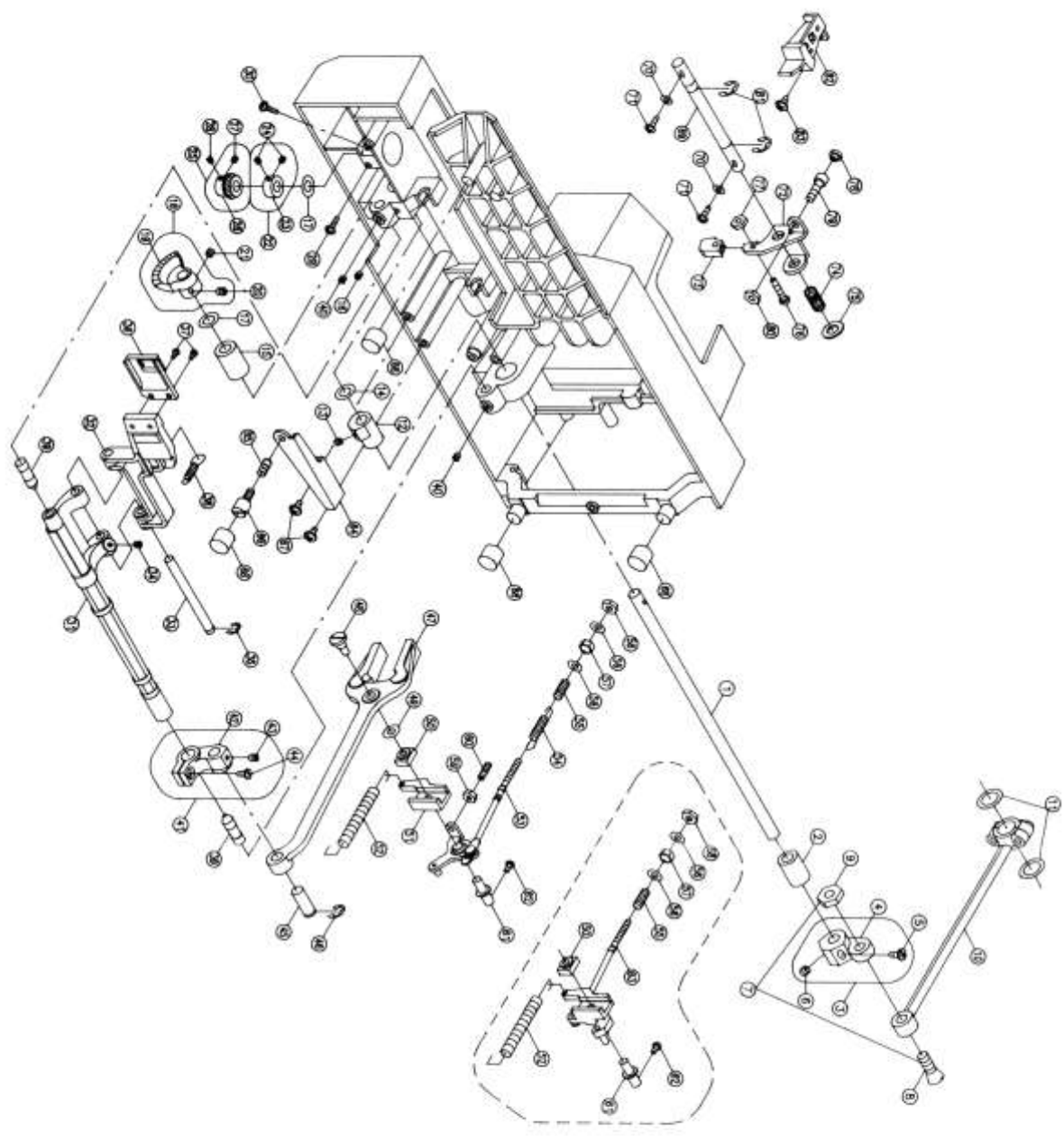


D





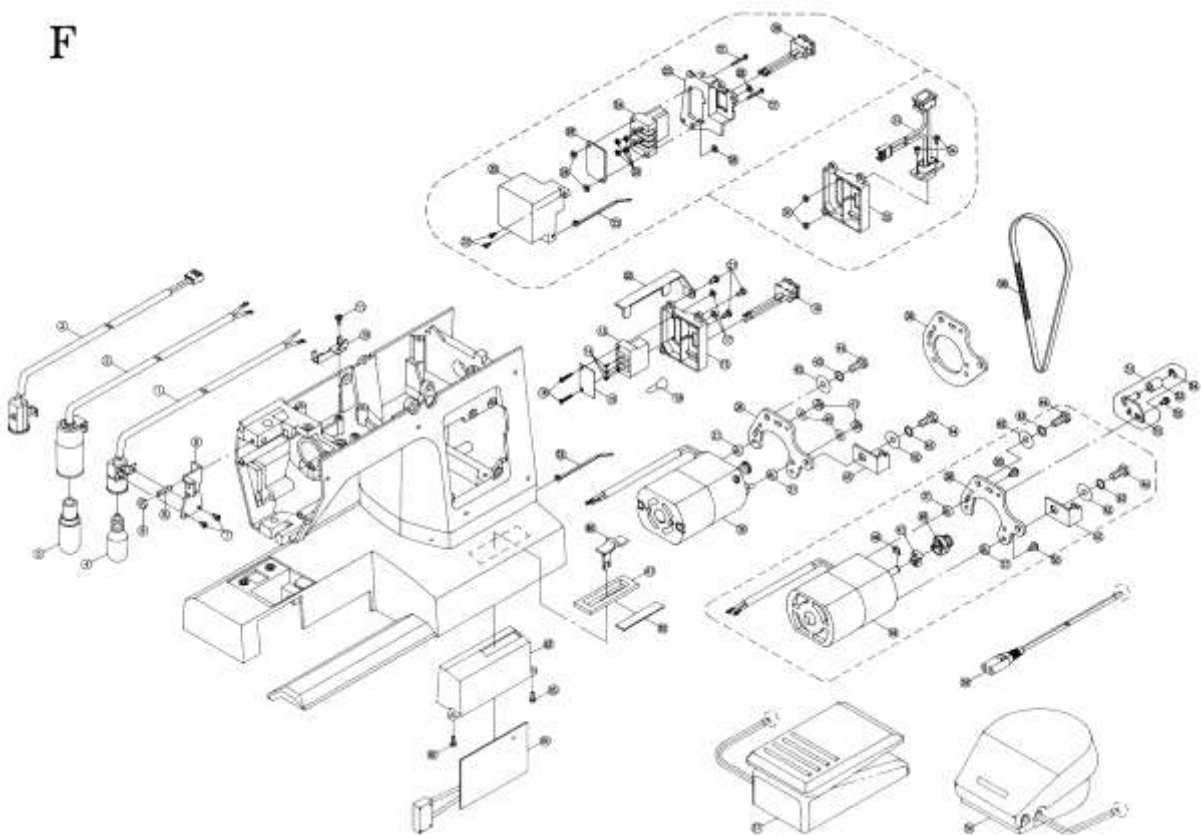
No.	Part No.	Description
1	G10153000	Lower shaft
2	H71433000	Lower shaft bushing (2)
3	H70245000	Crank connecting rod crank complete
4	H70253002*	Crank connecting rod crank
5	004280093	Set screw (M5)
6	004280023	Set screw (M5x5)
7	H71055003	Tapered screw complete
8	004102013*	Tapered screw
9	004708013*	Tapered nut
10	H70285000	Crank connecting rod complete
11	004400790	Washer (12x18x0.5)
12	K81213000	Feed lifting rock cam
13	004110013	Set screw (15/64x28x4.5)
14	004400800	Flat washer (7.6x12x0.13)
15	H70343000	Lower shaft bushing (1)
16	004250203	Set screw (M5x5)
17	004400410	Flat washer (8.2x12x0.25)
18	H70355000	Lower shaft rear complete
19	H70363000#	Lower shaft rear
20	004111013*	Set screw (1/4x40x5.5)
21	004111023	Set screw (1/4x40)
22	H71155000	Shuttle driver shaft collar complete
23	H71153003*	Shuttle driver shaft collar
24	004107013*	Set screw (11/64x40x4)
25	H70375000	Shuttle driver shaft rear complete
26	H70383000*	Shuttle driver shaft rear
27	004107253*	Set screw (11/64x40x4)
28	004107283	Set screw (11/64x40x5)
29	004240096	Set screw (M4x8)
30	004240046	Set screw (M4x10)
31	K81343000	Feed rock shaft
32	K81353000	Feed bar
33	H70513003	Feed bar shaft
34	004107013	Set screw (11/64x40x4)
35	003010053	E-ring (E-5)
36	H70523002	Feed dok
37	004104012	Feed dok set screw (1/8x44x5)
38	K81393003	Feed bar sprink
39	H70883000	Center bar
40	004250016	Set screw (M5x5)
41	K81365000	Feed rock shaft crank complete
42	K81373002*	Feed rock shaft crank
43	004107053*	Set screw (11/64x40x5)
44	004107063*	Set screw (11/64x40x13.5)
45	H12073003	Frak rod pin
46	003010073	E-ring (E-7)
47	K80423002	Frak rod
48	H12053000*	Feed regulating slide block shaft
49	004400450	Flat washer (5.5x12x0.25)
50	004400450	Flat washer (5.5x12x0.25)
51	H12113000*	Feed regulating slide block
52	K80443002	Feed regulating
53	K82043003	Feed regulating sprink
54	K80456000	Feed regulating plate complete
55	K80523003	Feed regulating rod sprink
56	H11563003	Reverse sprink
57	004300202	Washer (4.5x10x0.8)
58	004707013	Nut (11/64x40 t=7.6)
59	004707022	Nut (11/64x40 t=3.8)
60	004706013	Nut (9/64x40 t=3)
61	004106053	Set screw (9/64x40x11)
62	K80513000	Feed regulating shaft
63	004240096	Set screw (M4x12)
64	N80035000	Feed regulating complete (only for N830)
65	K80113003	Base plate adjustment screw plate
66	K82073003	Base plate adjustment screw sprink
67	K82133003	Base plate adjustment screw
68	004240096	Set screw (M4x8)
69	H70043000	Free arm base cushion rubber
70	K81253003	Feed lifting arm shaft
71	004240136	Washer (4.2x8x0.8)
72	K81235003	Set screw (M4x12)
73	K82053003	Feed lifting arm
74	K81263003	Feed lifting arm tube
75	004300226	Feed lifting arm sprink
76	004240086	Washer (8.2x16x1)
77	004840022	Set screw (M4x20)
78	K81243000	Nut (M4 t=3)
79	004250133	Sew screw knob
80	004850016	Sew screw (M5)
81	003010073	Nut (M5 t=4.8)
82	K81285000	E-ring (E-7)
83	004240056	Feed lifting rock connecting rod complete
		Set screw (M4x6)



# F

No.	Part No.	Description
1	002380418	Switch cord complete (for 100V/120V)
2	002122118	Switch cord complete (for 220V-240V)
3	002387418	Switch cord complete (for 100V electronic)
4	005100011	Lamp (100V 15W E-12)
4	005120011	Lamp (120V 15W E-12)
5	005240011	Lamp (240V 15W E-14)
6	002108023	Lamp holder
6	002246025	Lamp holder (only for auto threader model)
7	004230055	Set screw (M3x5)
8	004240563	Set screw (M4x12)
9	004840022	Nut (M4 t=3)
10	002001023	Cord holder (1)
11	004240056	Set screw (M4x6)
	No. 12-19	Only for 100V/120V
12	K82253211	Receptacle holder (for 100V/120V)
13	002080429#	Receptacle set (for 100V)
13	002050129#	Receptacle set (for 120V)
14	004230412#	Set screw (M3x6)
15	002211429#	Concent insulation plate (for 100V/120V)
16	004230046	Set screw (M3x20)
17	004830015	Nut (M3 t=2,3)
18	002212029#	Switch ass'y (for 100V/120V)
19	AA0463000	End terminal (C-4) (for 100V/120V)
20	002109023	Cord holder (2)
21	004240066	Set screw (M4x8)
22	002027129	Cord clip
	No. 23-31	Only for 220V-240V
23	002231129	Receptacle holder (for 220V-240V)
24	002162129#	Receptacle (for 220V-240V)
25	004830037#	Nut (M3 t=2)
26	002025129#	Concent insulation plate (for 220V-240V)
27	004230046	Set screw (M3x20)
28	004830015	Nut (M3 t=2,3)
29	002173029#	Switch ass'y (for 220V-240V)
30	002232129#	Receptacle holder cover (for 220V-240V)
31	004230286	Set screw (M3x8)
	No. 32-34	Only for 100V electronic
32	002165029	Receptacle holder (for 100V electronic)
33	008207001#	Electronic connect cord complete (100V E)
34	004230286	Set screw (M3x8)
35	004830015	Nut (M3 t=2,3)
36	001240060	Motor complete (for 100V)
36	001229409	Motor complete (for 120V)
36	001224508	Motor complete (for 100V electronic)
37	004300756	Washer (4.1x11.5x4.1)
38	002120025	Motor bracket
39	002230029	Motor bracket (for electronic model)
40	004300186	Washer (4.5x12x0.8)
41	004840051	Nut (M4)
42	004300306	Washer (3.2x14x1)
43	004800656	Spring washer (M6)
44	004260046	Motor complete set screw (M6x15)
45	S10343005	Motor drive belt cover stopper plate
46	001162209	Motor complete (for 220V R42-17)
46	001230109	Motor complete (for 220V R42-21)
46	001174209	Motor complete (for 240V R42-5)
46	001267709	Motor complete (for 230V R42-27)
47	008053302	Cushion rubber (for 220V-240V)
48	002127026	Motor feed pulley complete (for 220V-240V)
49	003010036	E-ring (E-3)
50	004249802#	Motor bracket set screw (M4x13)
51	K81985000	Belt adjusting plate complete (Only for 220V-240V, 100V electronic model)
52	K81996003#	Belt adjusting plate
53	I12323000#	Belt adjusting plate pulley
54	003010043	E-ring (E-4)
55	004240056	Set screw (M4x6)
56	007196111	Belt (196X0.025)
57	001012009	Foot controller complete (Japan) 100V
57	001193409	Foot controller complete (U.S.A & Canada) (3C-135B4022H)
58	001097109	Foot controller complete (Y-0216) (Europe & S.Africa) 220V
58	001231109	Foot controller complete (Y-0192) (Europe & S.Africa) 220V
58	001260709	Foot controller complete (Y-0206) (Europe & S.Africa) 230V
58	001267709	Foot controller complete (Y-0251) (Europe & S.Africa) 230V
58	001175209	Foot controller complete (Y-0144) (New Zealand & Australia)
58	001245309	Foot controller complete (United Kingdom)
58	008196901	Supply cord (only for 100V electronic)
60	008173211	Slide volume knob (for Electronic)
61	008270211	Slide volume knob holder (for electronic)
62	008174211	Slide volume knob plate (for electronic)
63	008175901	P.C. board box (for 100V electronic)
64	008208901#	P.C. board (for 100V electronic)
65	004240066	Set screw (M4x8)

# F



# G

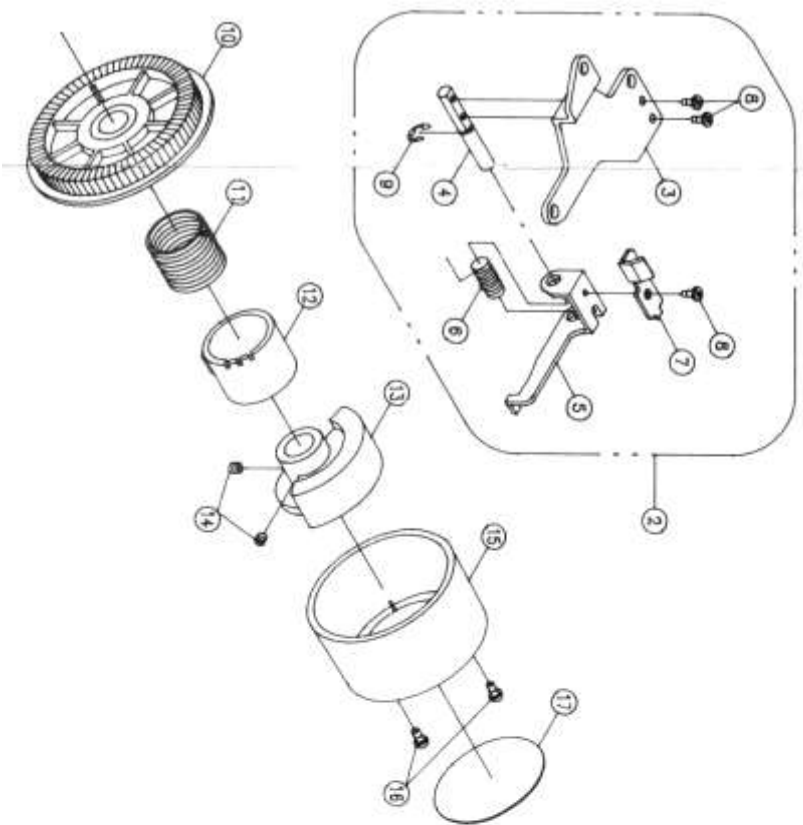
No.	Part No.	Description
1	006001008	Hammer foot (No.1)
2	006002008	Lordine foot (No.2)
3	006056008	Zig zag foot (No.3)
4	006003008	Satin stitch foot (No.4)
5	006005008	Button sew-on foot (No.4)
6	006018008	Overcasting foot (No.6)
7	006006008	Blind hem foot (No.9)
8	006055008	Zipper foot (No.N)
9	006016008	Fabroiderly
10	006067008	Buttonhole foot (No.5)
11	006025008	Buttonhole foot (No.5)
12	006008001	Quiltline bar
13	006051009	Anti-rustly
14	006052009	Dr-ier
15	006011009	Accessories bar
16	006010008	Brush
17	006013009	Oil-er
18	006012008	Large & small screw drive
19	006009008	Seam ripper
20	006014148	Needle (14#)
21	006032147	Needle complete (14#)
22	006015009	Felt cushion
23	1171133000	Bobbin

NOTE: When you order any spare parts from us, please cooperate with us by writing.

- (1) Section & Sequence No.
- (2) Name of parts
- (3) Voltage, if necessary
- (4) Others, if any
- (5) "\*" means: These spare parts are not supplied individually, but can be obtained by minimum quantity at 300 pcs.

029106002 (1#)

For auto clutch model only.



No.	Part No.	Description	中文品名
1	SA0023000	Arm shaft	上軸(有雜合彈用)
2	SA0155000	Auto clutch complete	雜合彈殼組
3	SA0055003	Top cover supporter plate (C)	頂板及支撐板(C)
4	SA0073003	Auto clutch lever shaft	自動离合器彈簧
5	SA0113003	Auto clutch lever	自動离合器彈簧
6	SA0053003	Auto clutch lever spring	自動离合器彈簧
7	SA0053003	Auto clutch adjustlink plate	自動离合器彈簧
8	004230286	Set screw (M3x8)	彈簧止動螺絲(M3x8)
9	003910053	E-ring (E-5)	彈簧止動螺絲(E-5)
10	SA0043211	Arm shaft drive belt pulley	自動离合器彈簧
11	SA0083003	Arm shaft clutch annulus spring	自動离合器彈簧
12	R10403000	Arm shaft clutch collar	自動离合器彈簧
13	SA0133000	land wheel bushing	自動离合器彈簧
14	004240503	Set screw (M4x4)	彈簧止動螺絲(M4x4)
15	SA0013211	land wheel	彈簧止動螺絲(M4x4)
16	004240056	Set screw (M4x6)	彈簧止動螺絲(M4x6)
17	H16893211	land wheel decorated plate	彈簧止動螺絲(M4x6)