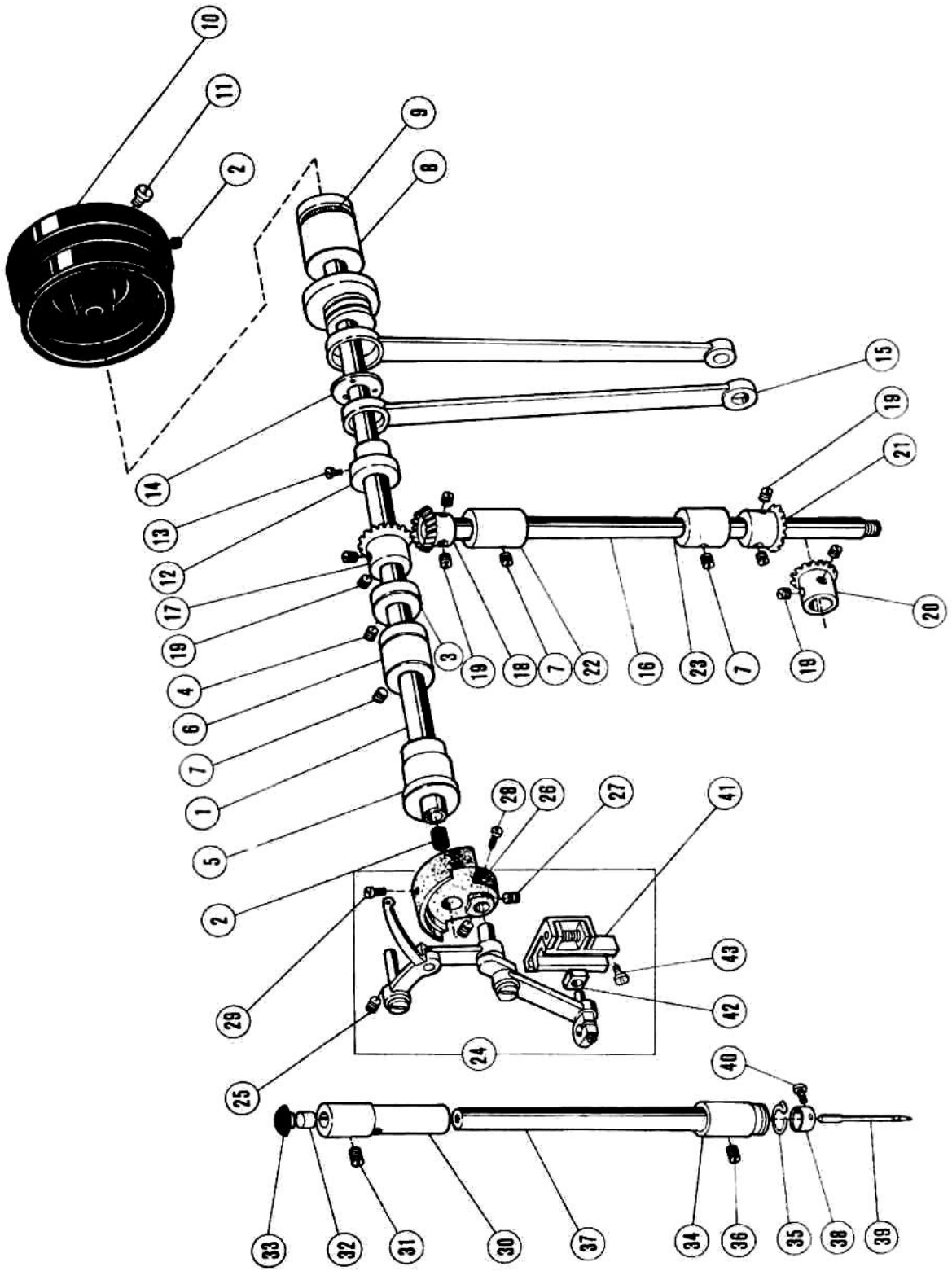


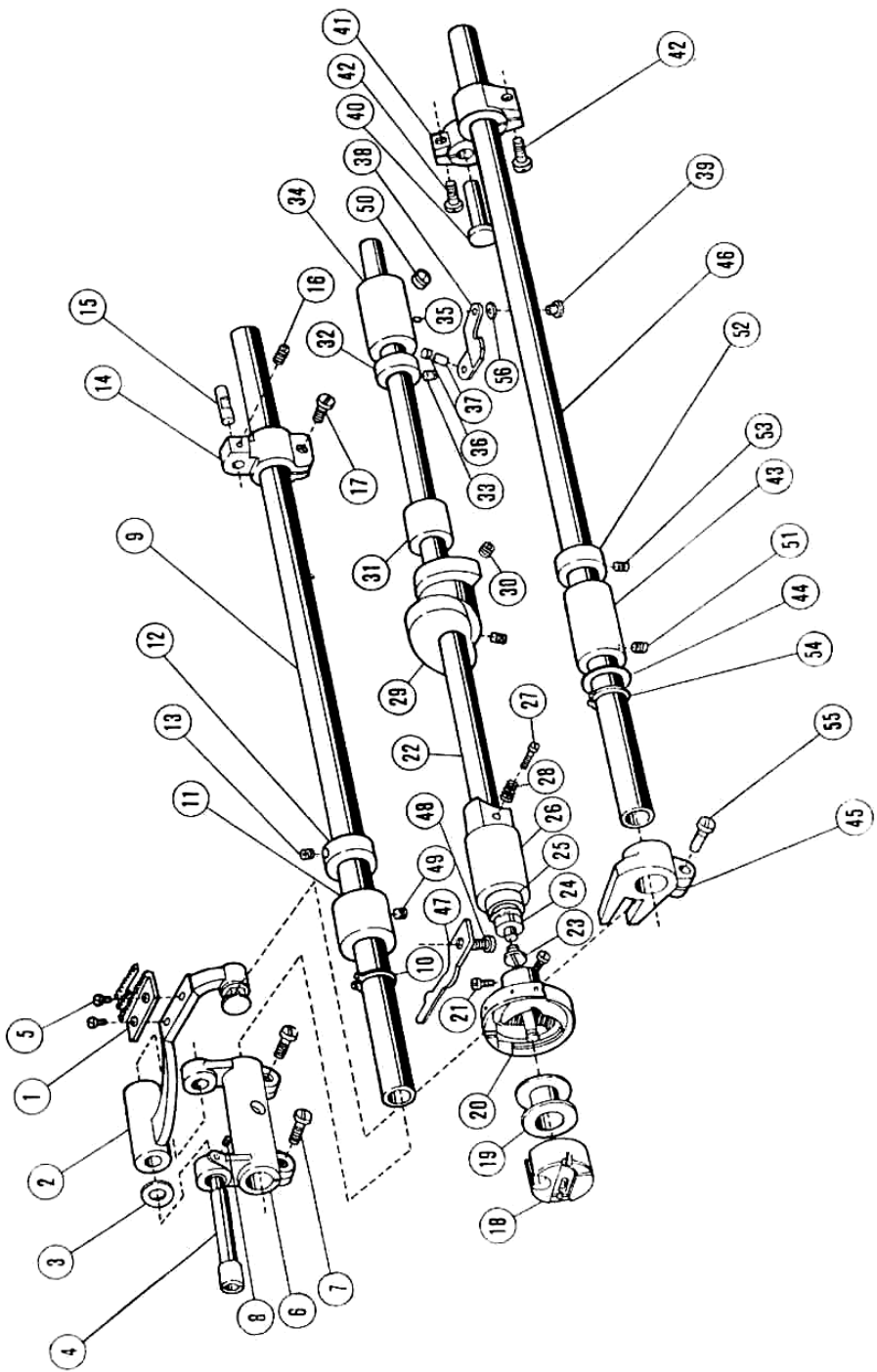
1. ARM AND BED MECHANISM

No.	Ref. No.	Description	Qt.	Note
1	36T2 -001A	Arm	1	
2	36T2-001B1	Name plate	1	
3	36T2-001B2	Trade mark plate	1	
4	22T1 -002B3	Rivet	4	
5	36T2-003C1	Face plate	1	
6	36T2-003C2	Face plate gasket	1	
7	22T1 -003C3	Rubber plug ($\phi 19$)	1	
8	22T1 -003C4	Rubber plug ($\phi 11.8$)	1	
	22T1 -003C4	Rubber plug	1	
	22T1 -003C4	Rubber plug	1	
9	22T1 -003C5	Thread guide on face plate	1	
10	22T1 -003C6	Screw	1	
	22T1 -003C6	Screw	1	
11	22T1 -004	Screw	1	
12	22T1 -004H	Oil check window	1	
13	36T2 -004	Three -hole thread guide	1	
14	36T2 -005	Screw	1	
15	36T2 -006D	Thread tension assy, (small)	1	
16	36T2-006D1	Pretension thread guide	1	
17	36T2 -006D2	Thread tension stud	1	
18	22T1 -009E3	Thread tension disc	2	
19	36T2-006D3	Tension spring for pretension	1	
20	36T2-006D4	Thread tension nut	1	
21	22T1 -011	Set screw	1	
22	22T1 -012F	Thread tension assy.	1	
23	22T1 -012F1	Thread tension stud	1	
24	22T1 -012F2	Thread tension nut	1	
25	22T1 -012F3	Thread tension spring	1	
26	22T1 -012F4	Thread tension releasing disc	1	
27	22T1 -012F5	Thread tension disc	2	
28	22T1 -012F6	Thread take -up spring	2	
29	22T1 -012F7	Thread tension regulator bushing	2	
30	22T1 -012F8	Screw	1	
31	22T1 -012F9	Thread tension releasing pin	1	
32	22T1 -012F10	Stop disc	1	
33	22T1 -012F11	O -type ring	1	
34	22T1 -013	Set screw	1	
35	22T1 -014	Thread guide	1	
36	22T1 -015	Rubber plug ($\phi 8. 8$)	2	
37	22T1 -016	Rubber plug ($\phi 27$)	1	
38	22T1 -017	Red rubber plug ($\phi 5. 7$)	2	
39	22T1 -003C3	Rubber plug ($\phi 19$)	2	
40	36T2-007	Thread take -up lever guard	1	
41	22T2-004	Screw	1	
42	36T2-008	Needle plate (B1.8)	1	
43	22T1 -020	Screw	2	
44	22T1 -021 G	Slide plate assy.	1	
45	22T1 -021G2	Slide plate spring	1	
46	22T1 -021G3	Screw	1	
47	22T1 -021G1	Slide plate	1	
48	22T1 -002	Leg	3	
49	22T1 -023	Spring washer	3	



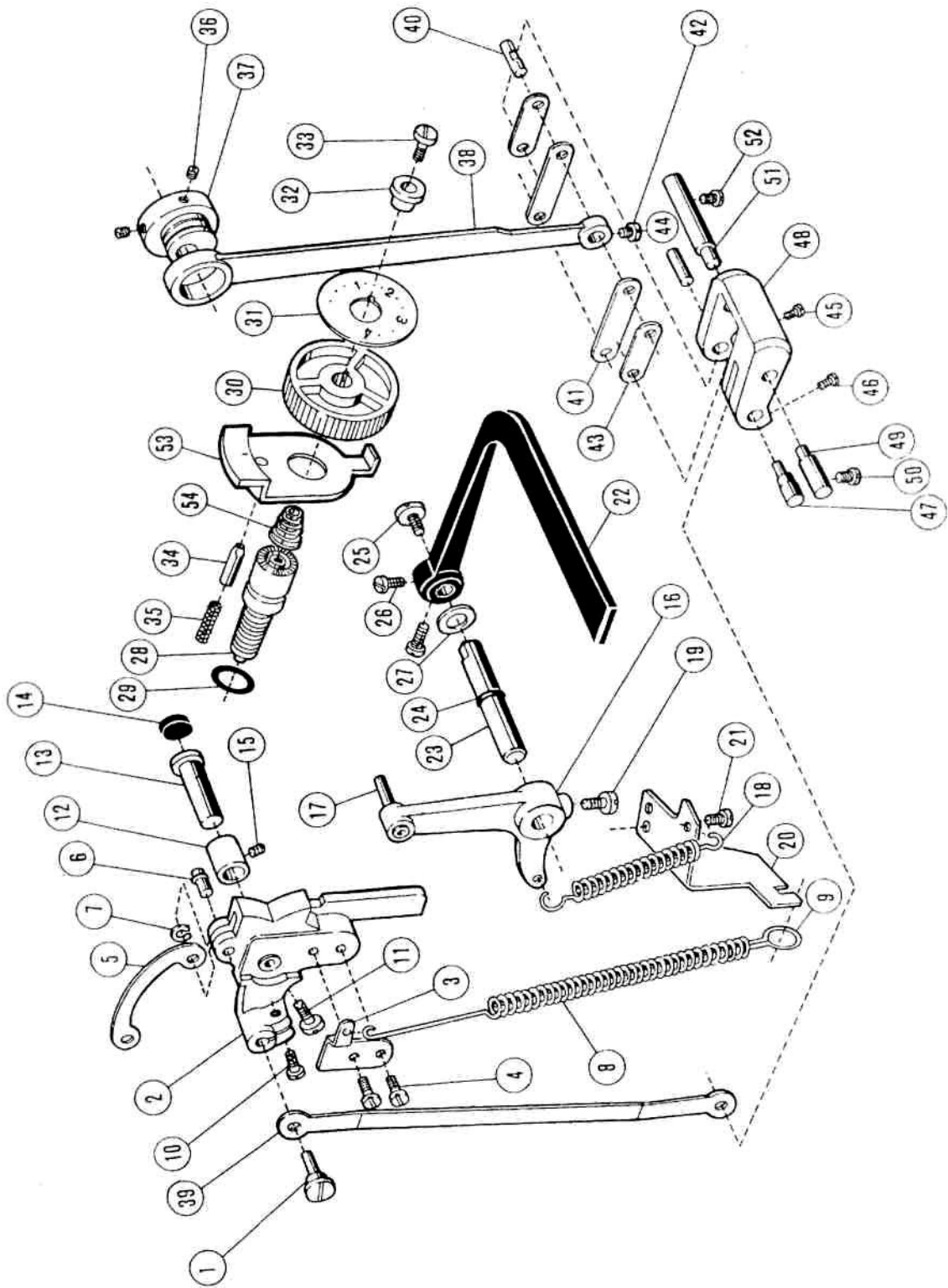
2. ARM SHAFT AND VERTICAL SHAFT AND THREAD TAKE -UP MECHANISM

No.	Ref. No.	Description	Qt.	Note
1	36T3-001A1	Arm shaft	1	
2	22T3-001A2	Rubber plug for arm shaft 7.4x10	2	
3	22T3-002B1	Collar for arm shaft	1	
4	22T3 -002B2	Screw	2	
5	22T3-003	Arm shaft bushing (left)	1	
6	22T3-004	Arm shaft bushing (middle)	1	
7	22T2 -002	Screw	3	
8	22T3-005	Arm shaft bushing (right)	1	
9	22T3 -006F	Oil seal	1	
10	36T3-002C1	Balance wheel	1	
11	22T3-007C2	Screw	2	
12	36T3 -003D1	Feed and feed lifting eccentric	1	
13	36T3-003D2	Screw	3	
14	36T3-004	Separating piece	1	
15	22T3-009D1C	Feed lifting link lever	1	
16	22T3-010E1	Vertical shaft	1	
17	22T3-010E2a1 -2	Bevel gear for arm shaft	1	
18	22T3-010E2a2-2	Bevel gear for vertical shaft (upper)	1	
19	22T2-005B3	Set screw	3	
20	22T3-010E2b1 -2	Bevel gear for hook shaft	1	
21	22T3-010E2b2-2	Bevel gear for vertical shaft (lower)	1	
22	22T3-011	Vertical shaft bushing (upper)	1	
23	22T3-011	Vertical shaft bushing (lower)	1	
24	22T2-001A	Needle bar link assy.	1	
25	22T2-002	Screw	1	
26	22T2-005B1	Needle bar crank	1	
27	22T2-005B2	Screw	2	
28	22T2-006	Screw	1	
29	22T2-007	Set screw	1	
30	22T2-008	Needle bar bushing (upper)	1	
31	22T2-009	Screw	1	
32	22T2-010	Felt plug	1	
33	22T2-010	Rubber plug ($\phi 8.8$)	1	
34	22T2-012C1	Needle bar bushing (lower)	1	
35	22T2-012C2	Thread guide	1	
36	22T2-013	Screw	1	
37	22T2-014	Needle bar	1	
38	22T2-015	Thread guide for needle bar	1	
39	22T2-016	Needle	1	
40	22T2-017	Screw	1	
41	36T3 -005E	Guide rail for slide block	1	
42	22T2 -020	Slide	1	
43	22T2-019	Set screw	2	



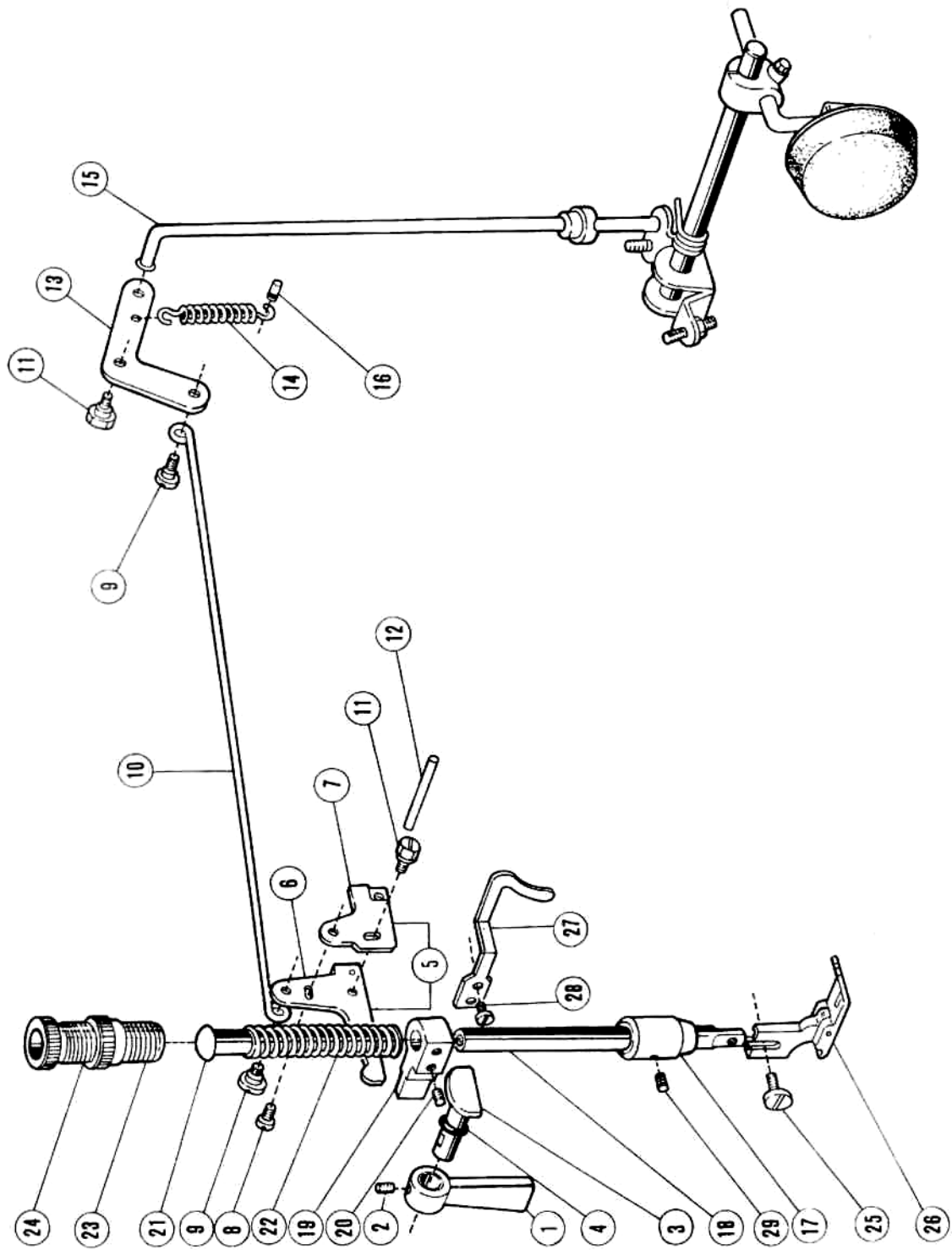
3. FEEDING AND FEED LIFTING AND ROTATING HOOK MECHANISM

No.	Ref. No.	Description	Qt.	Note
1	22T6-001A3	Feed dog	1	
2	36T4-001A1a	Feed bar	1	
3	22T6-001A6	Washer	1	
4	26T4-001A2	Shaft for feed bar	1	
5	22T6-001A4	Screw	2	
6	22T6-001A1a	Feed rock shaft crank	1	
7	22T6-001A1b	Screw	2	
8	22T2-019	Screw	1	
9	36T4-002	Feed rock shaft	1	
10	GB894-76	C -type stop ring 15	1	
11	22T6-004	Beshing for feed rock shaft	1	
12	22T6-005B1	Collar for feed rock shaft	1	
13	22T3 -002B2	Screw	2	
14	26T4-003	Feed rock shaft crank (right)	1	
15	36T4 -004H01	Pin	1	
16	36T5 -008E5	Screw	1	
17	22T6 -008D3	Screw	1	
18	36T4 -005B	Bobbin case complete	1	
19	36T4 -006	Bobbin	5	
20	36T4 -007C	Rotating hook complete	1	
21	36T4 -007C4	Screw	2	
22	36T4 -008D1	Hook shaft	1	
23	22T4-001A1a1	Filter screw	1	
24	22T4-001A1a2	Filter	1	
25	36T4-009G	Oil seal	1	
26	36T4-010	Hook shaft bushing (left)	1	
27	22T4 -005	Oil adjusting screw	1	
28	22T4-006	Coil spring	1	
29	36T4-011E1	Hook shaft cam	1	
30	36T4-011E2	Screw	1	
31	36T4-012	Hook shaft bushing (middle)	1	
32	22T4-002B1	Collar for hook shaft	1	
33	22T2 -009	Screw	2	
34	36T4-014F1	Hook shaft bushing (right)	1	
35	22T4-007C2	Oil pipe for hook shaft bushing	1	
36	36T4-015	Plunger	1	
37	36T4-016	Plunger spring	1	
38	22T4-010	Guide plate	1	
39	22T8 -009	Screw	1	
40	22T6 -007	Hinge pin	1	
41	36T4-017	Feed lifting rock shaft crank (right)	1	
42	J0. 0.71	Screw	2	
43	22T6-012	Bushing for feed lifting shaft (left)	1	
44	22T6-013	Washer	1	
45	36T4-018H1D1	Feed lifting fork	1	
46	36T4-018H2	Feed lifting rock shaft	1	
47	22T4-013	Hook positioner	1	
48	22T4-015	Screw	1	
49	22T2 -009	Screw	1	
50	22T1 -013	Screw	1	
51	22T2 -002	Screw	1	
52	22T6-005B1	Collar for feed lifting shaft	1	
53	22T3 -002B2	Screw	2	
54	GB894-76	C - type stop ring 15	1	
55	22T6 -008D3	Screw	1	
56	GB93-76	Washer 6	1	



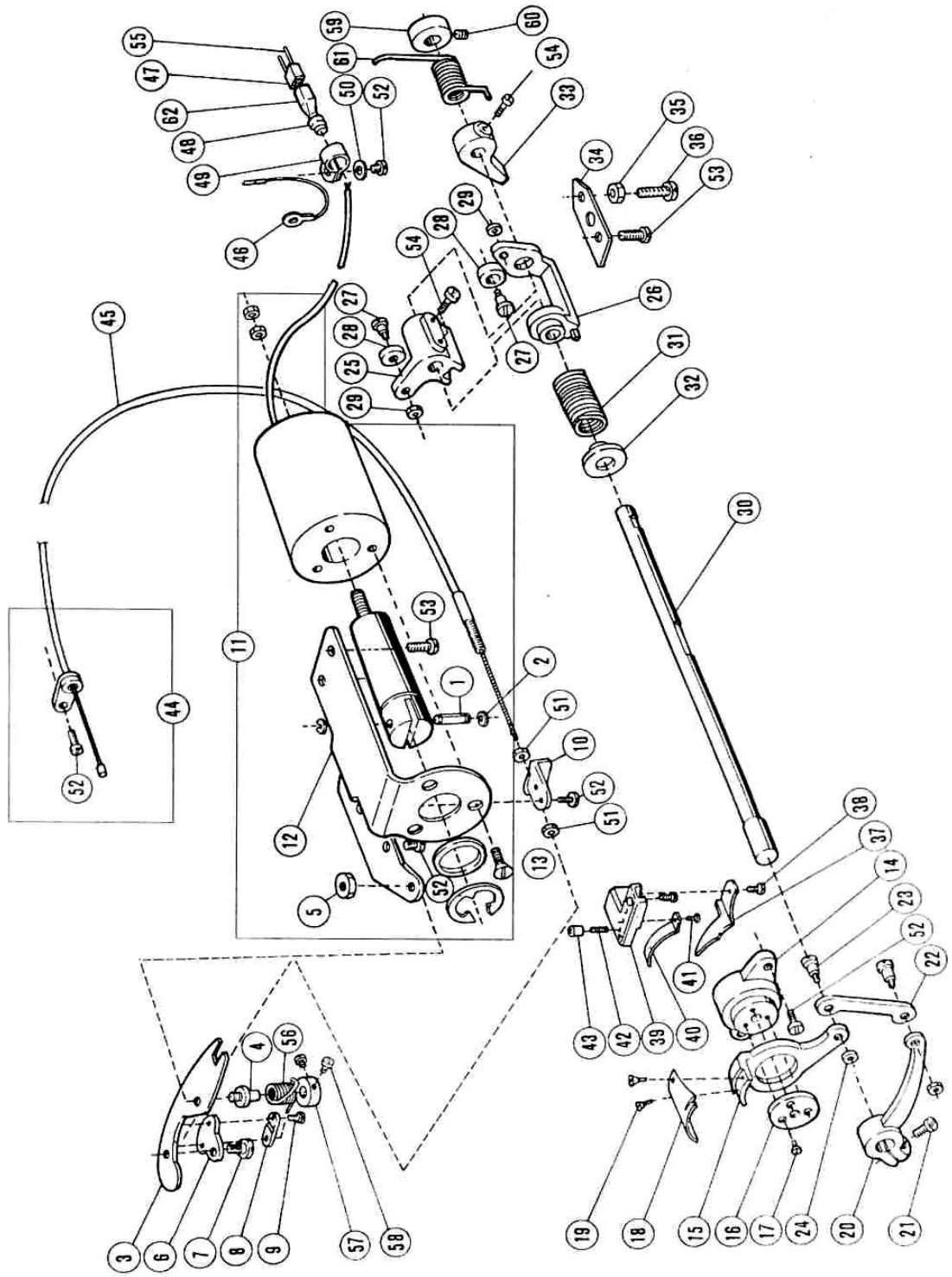
4. STITCH LENGTH REGULATING MECHANISM

No.	Ref. No.	Description	Qt.	Note
1	36T5-001	Set pin	1	
2	36T5 -002A1	Feed regulator	1	
3	36T5 -002A2	Spring retainer	1	
4	22T2-019	Screw	2	
5	36T5-002A3	Link	1	
6	36T5-001A4	Pin	1	
7	GB896-75	Split retaining ring (Φ 4)	1	
8	36T5-002A5	Coil spring	1	
9	36T5-002A6	Spring holder	1	
10	22T6-008D3	Screw	1	
11	22T5-010D4	Pin shaft	1	
12	22T5-003	Bushing for feed regulator	1	
13	22T5-004	Pin shaft	1	
14	36T5-003	Rubber plug (Φ 20)	1	
15	22T2 -002	Set screw	1	
16	36T5-004B1	Reverse sewing crank	1	
17	36T5-004B2	Reverse sewing crank shaft	1	
18	36T5-004B3	Coil spring	1	
19	22T5 -013	Screw	1	
20	36T5-005	Spring, holder	1	
21	22T5-001A4	Screw	1	
22	36T5-006C2	Reverse sewing lever	1	
23	36T5-006C1a1	Shaft for reverse sewing lever	1	
24	22T5-010D2b	O -type ring	1	
25	22T5-010D3	Screw	1	
26	22T5-010D4	Screw	2	
27	22T5-011	Washer	1	
28	36T5-007D1	Screw bar	1	
29	22T5-006C4	O -type rubber ring	1	
30	36T5-007D2	Dial	1	
31	36T5 -007D3	Stitch length indicating plate	1	
32	36T5-007D4	Bushing	1	
33	36T5-007D5	Screw	1	
34	36T5-012	Thrust pin	1	
35	22T5-009	Coil spring	1	
36	36T3-003D2	Screw	(3)	
37	36T5-008E1	Feed cam	1	
38	36T5-008E2	Feed link	1	
39	36T5-008D3	Stitch length regulating link	1	
40	36T4-004H02	Set pin	(1)	
41	36T5-008E4H02	Link	2	
42	36T5-008E5	Screw	1	
43	36T5-008E4H01	Link	1	
44	36T5-008E6	Pin	1	
45	36T5-008E7	Screw	1	
46	36T5-008E8	Screw	1	
47	36T5-008E9	Set pin	1	
48	36T5-008E10	Stitch length adjusting crank	1	
49	36T5-009H02	Set pin	1	
50	22T6-008D3	Screw	1	
51	36T5-009H01	Set pin	1	
52	22T6-008D3	Screw	1	
53	36T5-010	Thrust pin releasing lever	1	
54	36T5-011	Spring	1	



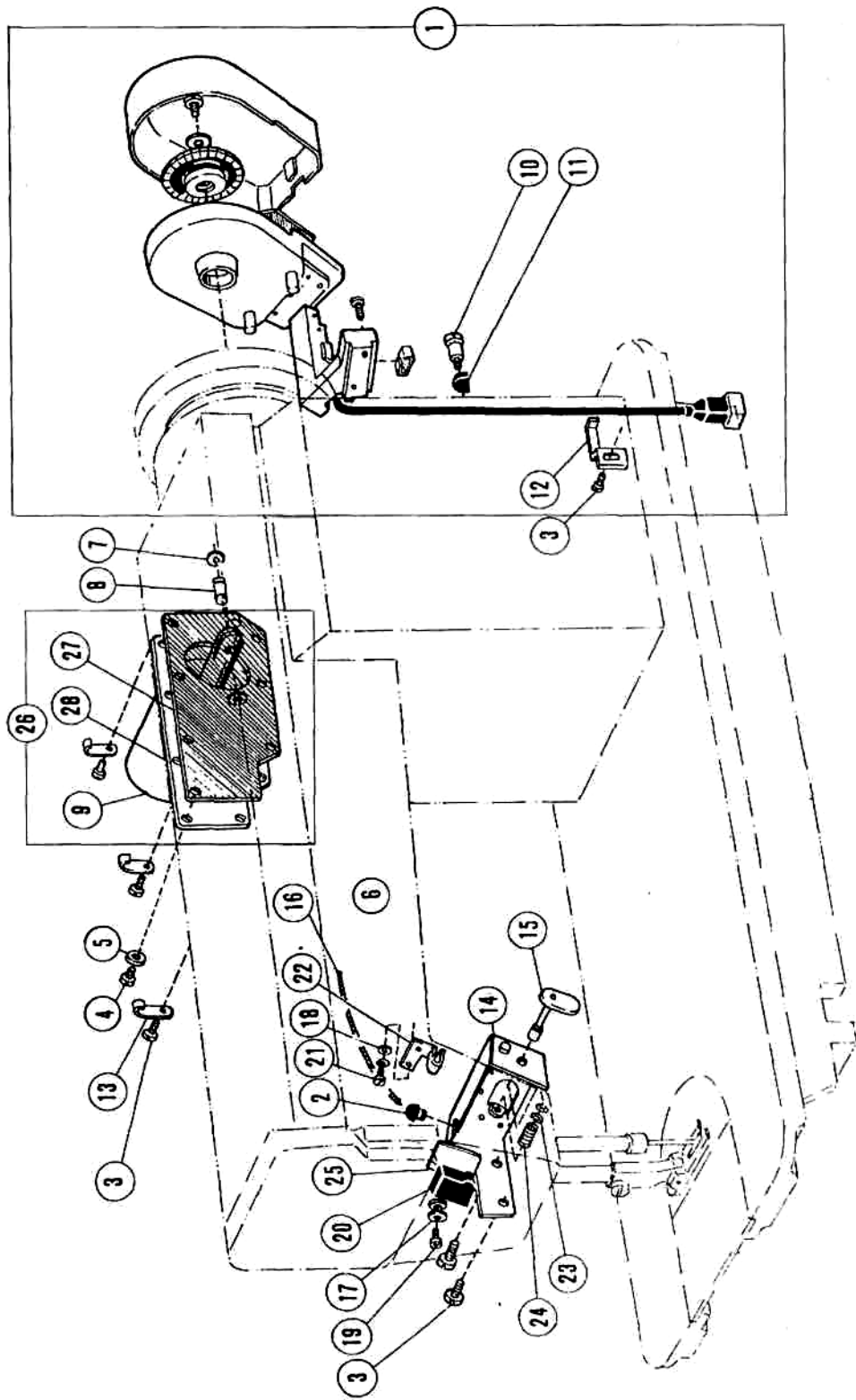
5. PRESSER FOOT MECHANISM

No.	Ref. No.	Description	Qt.	Note
1	36T6-001A1	Presser bar lifter	1	
2	22T7-001A2	Screw	1	
3	36T6-002B1	Presser bar lifting cam	1	
4	GB1235-76	Oil seal	1	0 -type Oil seal 8x1.9
5	36T6-003C1a	Knee lifter lever (left) assy.	1	
6	36T6-003C1a1	Knee lifter lever (left)	1	
7	22T7-004B1b	Tension releasing cam	1	
8	22T7-004B1c	Screw	1	
9	22T7-004B2	Screw	2	
10	22T7-004B3	Knee lifter rod	1	
11	22T7-005	Screw	1	
		Screw	1	
12	36T6-004	Thread releasing pin	1	
13	22T7 -007C1	Knee lifter lever (right)	1	
14	22T7-007C2	Coil spring	1	
15	22T7-007C3	Knee lifter connecting rod	1	
16	22T7-008	Pin for spring	1	
17	36T6-005	Bushing for presser bar	1	
18	36T6-006	Presser bar	1	
19	22T7-011D1	Presser bar guide bracket	1	
20	36T6-007	Screw	1	
21	22T7-012	Presser spring guide	1	
22	22T7-013	Presser spring	1	
23	36T6-010E1	Thumb screw	1	
24	36T6-010E2	Lock nut	1	
25	22T7-015	Screw	1	
26	22T7-017F	Presser foot assy.	1	
27	36T6-009	Thread guide	1	
28	22T2-004	Screw	1	
29	22T2-013	Screw	1	same as 3 -36



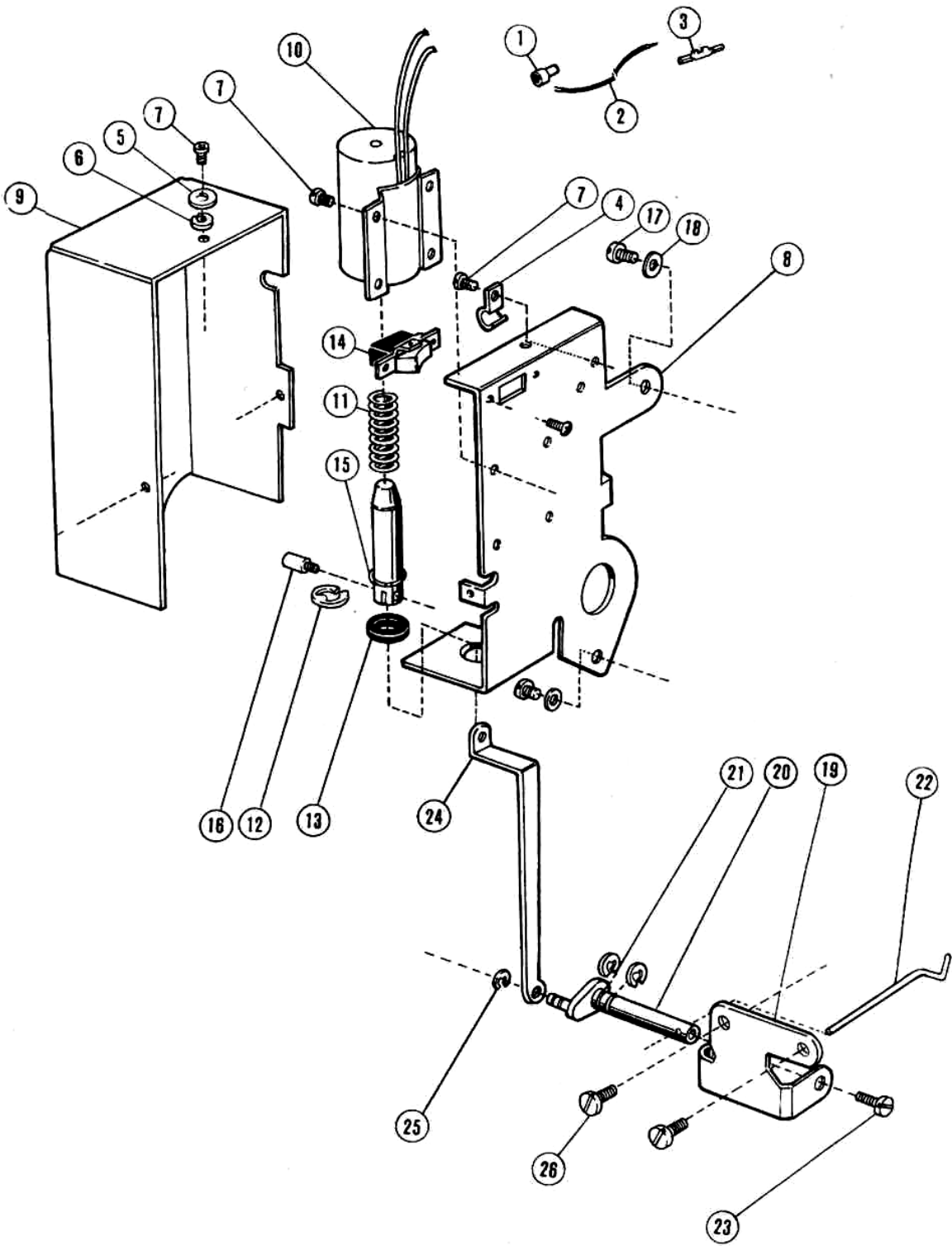
6. KNIFE ACTUATING MECHANISM

No.	Ref. No.	Description	Qt.	Note
1	36T8-009	Pin	1	
2	GB896-76	Split retaining ring	2	
3	36T7-001A1	Flexible driving lever	1	
4	36T7-001A2	Screw	1	
5	J0. 0. 16	Nut	1	
6	36T7-001A3	Bracket for flexible wire	1	
7	36T7-001A4	Screw	1	
8	36T7-001A5	Flexible wire connecting bracket	1	
9	36T7-001A6	Screw	2	
10	36T7-001A7	Holder for flexible wire	1	
11	36T7-001A8a	Solenoid assy, for thread trimmer	1	
12	36T7-001A8b	Solenoid mounting bracket	1	
13	GB68-76	Screw	3	
14	36T7-002B1a1	Knife holding bracket saddle	1	
15	36T7-002B1a2	Knife base (left)	1	
16	36T7-002B1a3	Washer	1	
17	36T7-002B1a4	Screw	3	
18	36T7-002B2	Blade (left)	1	
19	36T7-002B3	Set screw	2	
20	36T7-002B4	Knife driving crank	1	
21	61 -04-011/B6	Screw	1	
22	36T7-002B5	Link	1	
23	36T7-002B6	Screw	2	
24	36T7-002B7	Nut	2	
25	36T7-003C1	Cam follower crank (1)	1	
26	36T7-003C2	Cam follower crank (2)	1	
27	36T7-003C3	Roller stud	2	
28	36T7-003C4	Roller	2	
29	36T7-003C5	Nut	2	
30	36T7-004	Knife driving shaft	1	
31	36T7-005	Coil spring	1	
32	36T7-006	Bushing	1	
33	36T7-007	Stopper	1	
34	36T7-008D1	Stopper plate	1	
35	J0. 0.16	Nut	1	
36	36T7-008D2	Screw	1	
37	36T7-009E1	Thread guide	1	
38	J0. 0.72	Screw	1	
39	36T7-009E2	Bracket for fixed blade	1	
40	36T7 -009E3	Fixed knife	1	
41	36T7-009E4	Set screw	1	
42	36T7-009E5	Adjusting screw	1	
43	36T7-009E6	Adjusting nut	1	
44	36T7-010F	Flexible wire assv.	1	
45	36T7-010F2	Flexible wire	1	
46		Earth wire assy.	1	
47		Plug	1	
48	37T7-013	Rubber sleeve	1	
49	36T7-014	Wire clamp	1	
50	GB848-76	Washer	1	
51	GB54-76	Nut	2	
52	22T2 -019	Screw	2	same as (3 -42)
		Screw	1	
		Screw	2	
		Screw	1	
		Screw	1	
		Screw	1	
53	22T5-001A4	Screw	2	
		Screw	2	
54	22T5-010D4	Screw	2	
		Screw	1	
55	36T9-001A2a2	Pin	2	
56	36T7-001A9	Coil spring	1	
57	36T7-001A10	Collar for driving lever	1	
58	36T5-008E8	Screw	1	
59	36T7-015H1	Collar for knife driving shaft	1	
60	22T3-002B1	Screw	1	
61	36T7 -002B1	Coil spring	1	
62		Guard for plug	1	



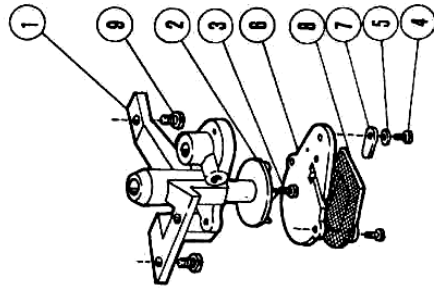
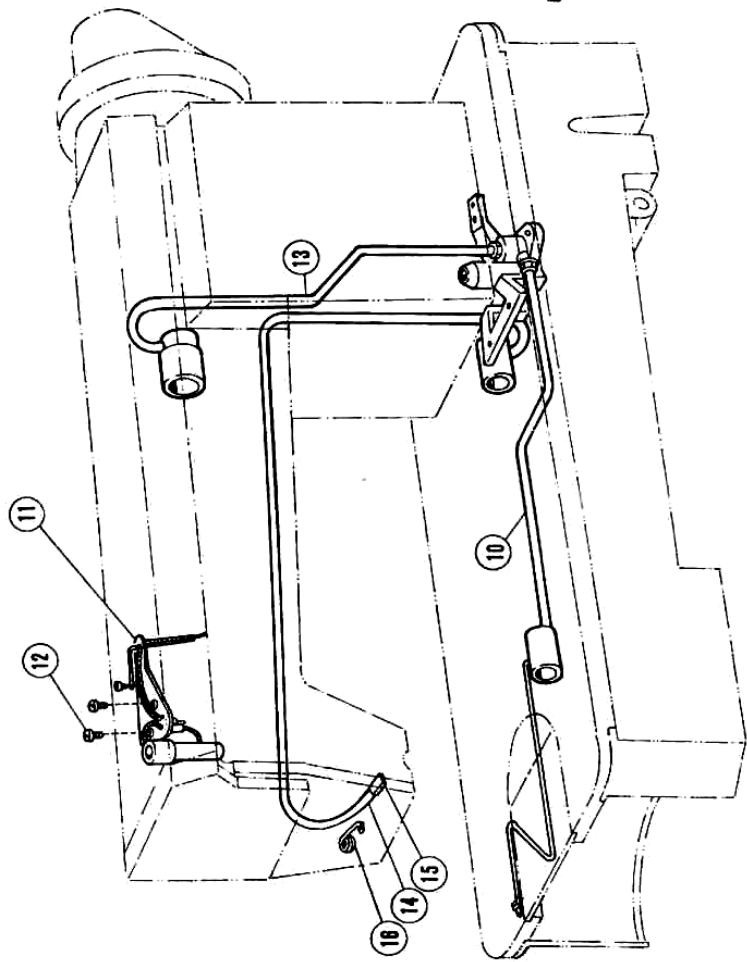
7. REVERSE SEWING AND DETECTOR MECHANISM

No.	Ref. No.	Description	Qt.	Note
1		Detector assy.	1	
		Bracket for detector	1	
		Detector base	1	
		Light - preventive plate	1	
		Washer	1	
		Washer for flexible wire	1	
		Detector wire	1	
		Plug for detector wire	1	
		Spring clamp	1	
		Box for detector	1	
		Screw	2	
		Screw	1	
2	36T7-014	Rubber plug	1	same as (7 -48)
3	22T2-019	Screw	1	same as (3-42)
		Screw	1	
		Screw	2	
		Screw	3	
4	22T1 -006	Screw	6	
5	22T1 -007	Washer	6	
6	36T9-001A2a2	Pin	4	
7	GB896-76	Split washer 4	2	
8	36T8 -009	Pin	1	
9	36T8-008E4D	Electric -magnet for reverse sewing	1	
10	36T8-004B1	Screw	1	
11	36T8-004B2	Rubber ring	1	
12	36T8-005	Cord holder	1	
13	36T8 -006	Wire clamp	1	
14	36T8 -007C1	Switch bracket	1	
15	36T8 -007C2a	Button assy.	1	
16	36T8-007C3b	Cable for switch at reverse sewing	1	
17	GB859-76	Spring washer 2	4	
18	GB848-76	Washer 2	4	
19	GB66-76	Screw	2	
20	36T8 -007C4	Micro switch	1	
21	GB66-76	Screw	2	
22	36T8 -007C5	Screw	1	
23	GB896-76	Split retaining ring 3	2	
24	36T8 -007C6	Coil spring	1	
25	36T8 -007C7	Insulating plate	1	
26	36T8-008E	Side cover assy.	1	
27	36T8-008E1	Gasket	1	
28	36T8 -008E2	Side cover	1	



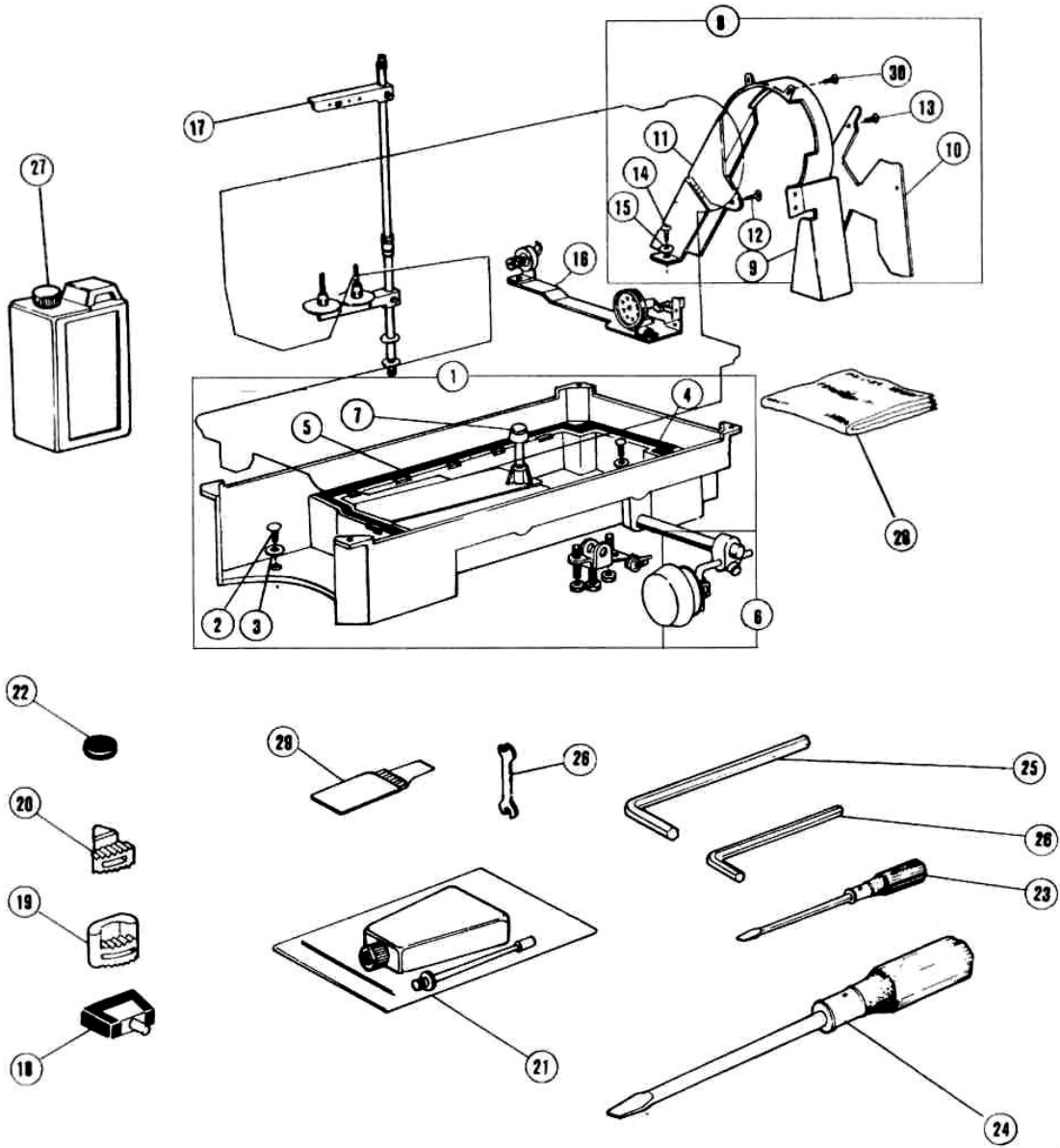
8. WIPER MECHANISM

No.	Ref. No.	Description	Qt.	Note
1	36T9-001A1	Wire connector	1	
2	36T9-001A2a	Wire	1	
3	36T9-001A2a2	Plug connector	2	
4	36T9-001A3	Cord clamp	1	
5	GB848-76	Washer 3	8	
6	GB859-76	Washer 3	8	
7	GB818-76	Screw M3x6	8	
8	36T9-001A4	Solenoid bracket	1	
9	36T9-001A5	Cover for wiper mech.	1	
10	36T9-001A6	Solenoid for wiper	1	
11	36T9-001A7	Coil spring	1	
12	GB896-76	Retaining ring 9	1	
13	36T9-001A8	Rubber ring	1	
14	36T9-001A9	Switch for wiper	1	
15	36T9-001A10	Washer Φ 13	1	
16	36T9 -002	Screw	1	
17	22T5-001A4	Screw	2	
18	36T9-003	Washer	2	
19	36T9-004B1	Wiper bracket	1	
20	36T9-004B2a	Wiper shaft assy.	1	
21	GB896-76	Retaining ring 4	2	
22	36T9 -004B3	Wiper	1	
23	22T6-001A4	Screw	1	
24	36T9-004B4	Link	1	
25	GB896-76	Retaining ring 2. 5	1	
26	36T9-005	Screw	2	



9. OIL PUMP MECHANISM

No.	Ref. No.	Description	Qt.	Note
1	22T8-001	Oil pump	1	
2	22T8-002	Oil pump impeller	1	
3	22T8-003	Screw	1	
4	22T8-004	Screw	3	
5	22T8-005	Springy washer	1	
6	22T8-006	Oil pump fitting plate	1	-
7	22T8 -007	Oil adjusting plate	1	
8	22T8 -008A	Oil pump screen assy.	1	
9	22T8 -009	Screw	3	
10	36T10-001A	Oil pump for hook shaft	1	
11	22T8-011C	Oil braid fitting plate	1	
12	22T8-012	Screw	2	
13	22T8-013D	Oil pump for arm shaft	1	
14	22T8-014	Oil return pipe	1	
15	22T8-015	Felt pouch for return oil filter	1	
16	36T10-002	Oil filter holder	1	



10. OIL RESERVOIR AND ACCESSORIES

No.	Ref. No.	Description	Qt.	Note
1	36T11 -001A	Oil reservoir assy.	1	
2	22T9-001A2	Screw	2	
3	22T9-001A3	Washer	2	
4	22T9-001A4	Oil gasket (small)	1	
5	22T9-001A5	Oil gasket (big)	1	
6	22T9 -003B	Knee lifter assy.	1	
7	22T9-003B1	Knee lifter lifting pin	1	
8	36T11 -002A	Belt cover assy.	1	
9	36T11 -002A1	Belt cover bracket	1	
10	36T11 -002A2	Belt cover side plate	1	
11	36T11 -002A3a	Belt cover	1	
12	22T8-009	Screw	3	
13	22T1 -006	Screw	4	
14	GB99-76	Wood screw	2	
15	GB848-76	Washer	2	
16	36T11 -004A	Thread winder assy.	1	
17	GJX-2	Thread spool assy.	1	
18	36T11 -008B	Hinge with rubber cushion	2	
19	22T9 -009	Cushion	2	
20	22T9-010	Cushion	2	
21	22T9-011	Oil pot	1	
22	22T9-012	Magnet block	1	
23	22T9-013	Screwdriver	1	
24	22T9-014	Screwdriver	1	
25	36T11 -006	Allen wrench M4 M6	leach	
26	22T9-016	Double open -end wrench	1	
27	22T9-017	Oil tank	1	
28	22T9-018	Machine head cover	1	
29	22T9 -024	Needle bag	1	
30	36T5 -008E5	Screw	2	