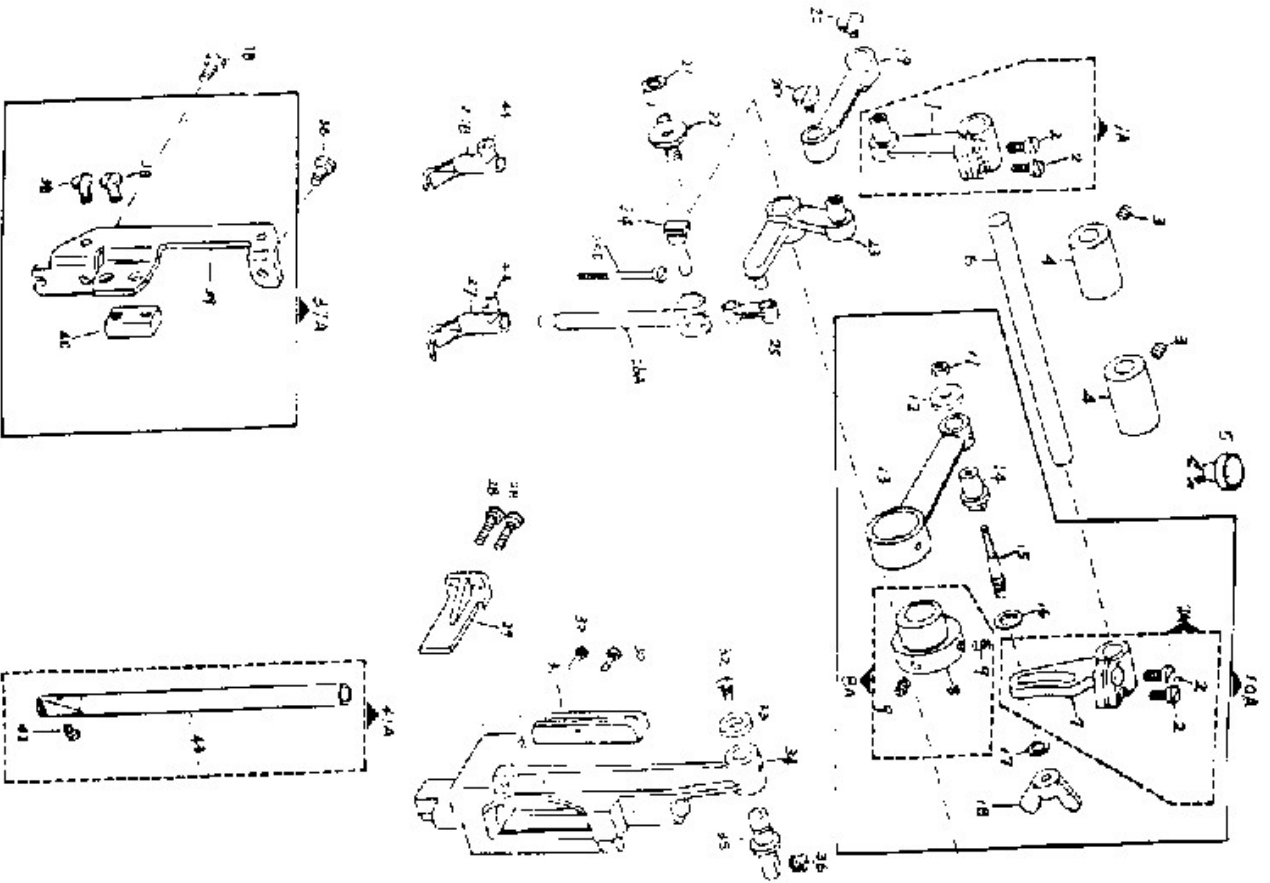


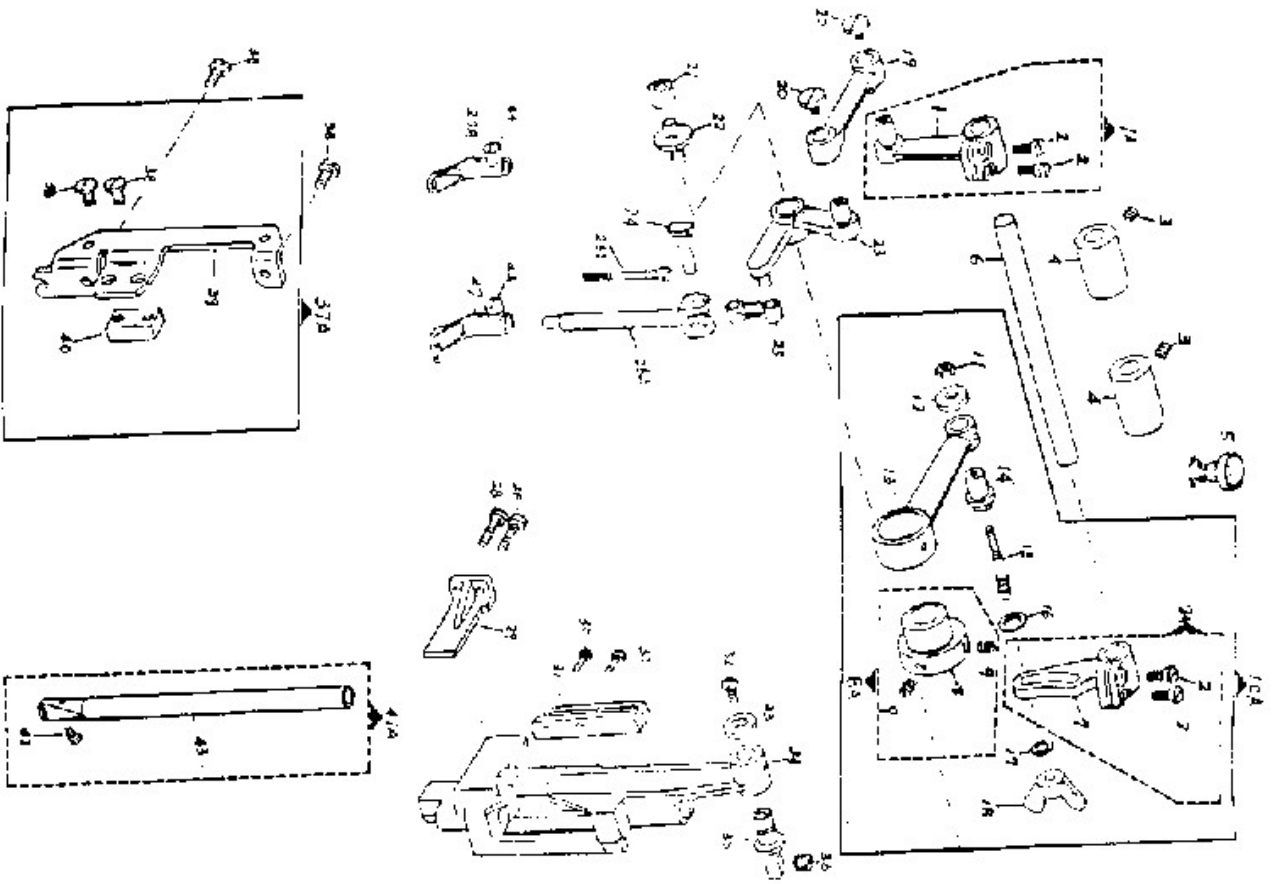
1

REF. NO.	PART NO.	DESCRIPTION
P.1-1	335-0001	TAKE-UP LEVER COVER
2	335-0002	SCREW
3	335-0003	WASHER
4	335-0004	WICK
6	335-0005	TAKE UP FULCRUM STUD
7	335-0006	SCREW
8	335-0007	WASHER
9	335-0008	TAKE-UP LEVER
10	335-0009	WICK
11	335-0010	NEEDLE BAR LINK HINGE STUD
12	335-0011	TAKE-UP SLEEVE FULCRUM STUD
13	335-0012	WICK
14	335-0013	NEEDLE BAR LINK
16	335-0014	WICK
17	335-0015	NEEDLE BAR STUD
17A	335-0016	NEEDLE BAR STUD WITH SCREW
18A	335-0017	THREAD TAKE UP LEVER ASM.
19	335-0018	SCREW
20	335-0019	FACE PLATE
21	335-0020	SCREW
22	335-0021	STUD
23	335-0022	DISC
24	335-0023	NUT
25	335-0024	LINK
26	335-0025	FASTENING SCREW
27	335-0026	MACHINE HEAD CASTING
28	335-0027	MACHINE BASE
29	335-0028	SCREW
30	335-0029	HINGE COMPLETE
31	335-0030	STAND
32	335-0031	OIL FILTER
33	335-0032	SPOOL PIN
34	335-0033	NUT



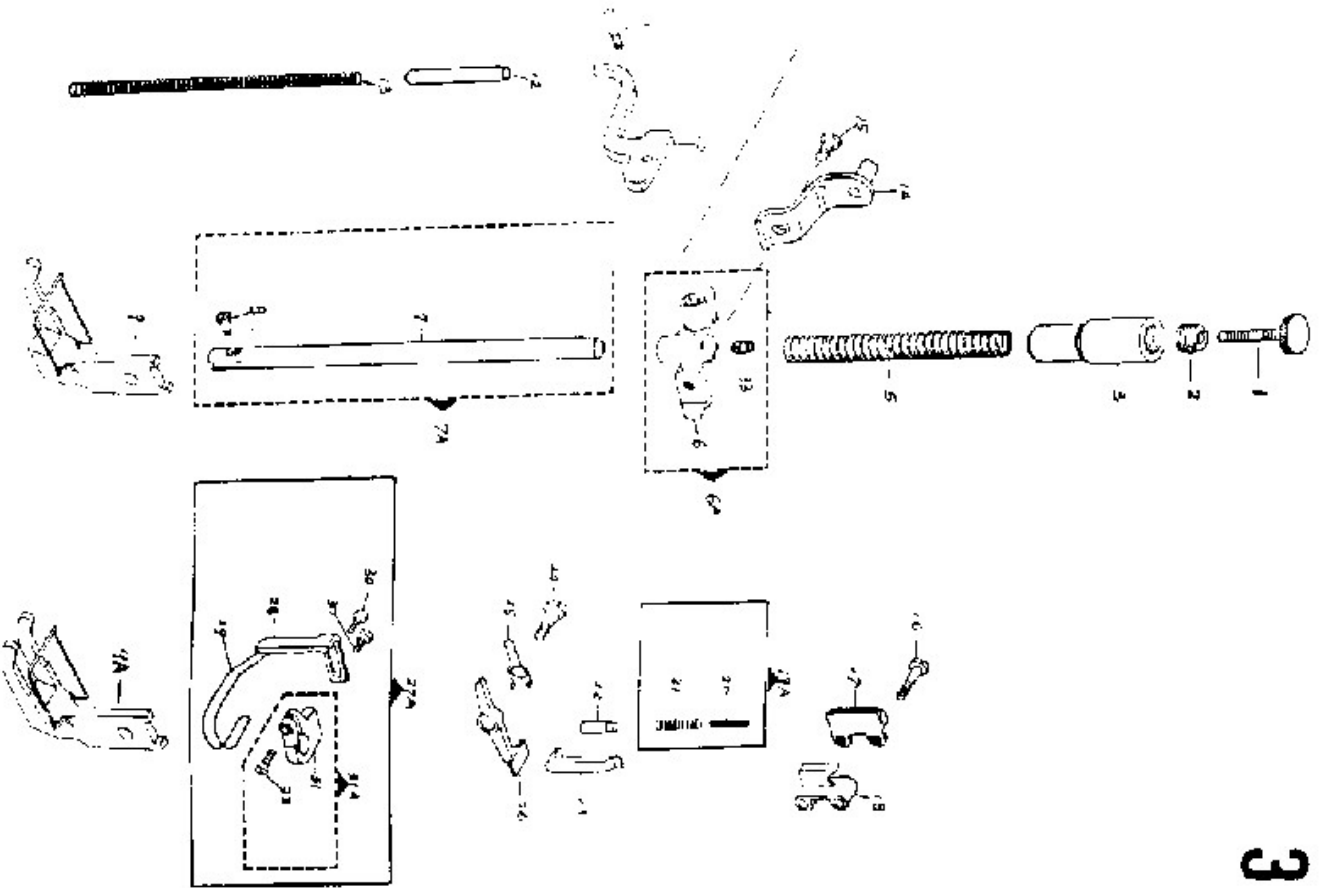
REF. NO.	PART NO	DESCRIPTION
P.2-1		
1 A	335-0034	UPPER FEED DRIVING SHAFT CRANK
2	335-0035	CRANK & SCREW
3	335-0036	SCREW
4	335-0037	SCREW
5	335-0038	BUSHING
6	335-0039	OIL INSERT
7 A	335-0040	UPPER FEED DRIVING SHAFT
8 A	335-0041	CRANK LEVER
9	335-0042	CRANK LEVER & SCREW
10A	335-0043	UPPER FEED DRIVING ECCENTRIC
11	335-0044	ECCENTRIC & SCREW
12	335-0045	SCREW
13	335-0046	CRANK & ECCENTRIC ASM.
14	335-0047	SCREW
15	335-0048	SAFETY DISC
16	335-0049	ECCENTRIC ARM
17	335-0050	STUD
18	335-0051	SCREW
19	335-0052	DISC
20	335-0053	DISC
21	335-0054	WING NUT
22	335-0055	UPPER FEED PITMAN ROD
23	335-0056	SCREW
24	335-0057	ROLLER
25	335-0058	GUIDE SCREW
26A	335-0059	UPPER FEED DRIVING CRANK
27	335-0060	STUD
28	335-0061	UPPER FEED BAR LINK
29	335-0062	UPPER FEED BAR
30	335-0063	SCREW
31	335-0064	PRESSER FOOT(FOR NORMAL SEWING)
32	335-0065	PRESSER FOOT(FOR BINDING)

2



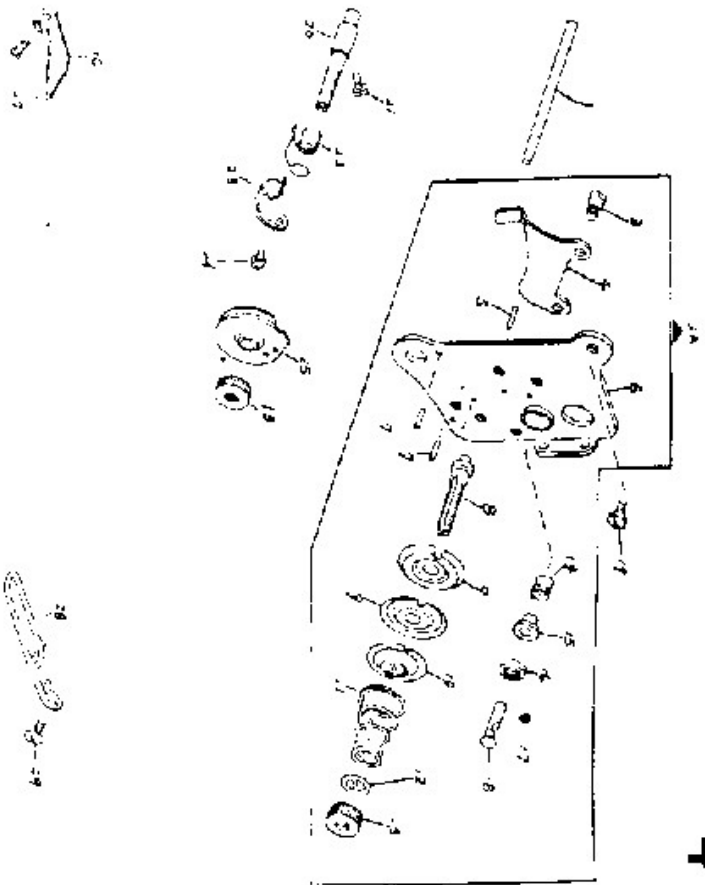
REF. NO.	PART NO.	DESCRIPTION
P.2-2		
8	335-0066	SCREW
2 9	335-0067	GUIDE ANGLE
3 0	335-0068	SCREW
3 1	335-0069	NEEDLE BAR GUIDE PLATE
3 2	335-0070	SCREW
3 3	335-0071	WASHER
3 4	335-0072	NEEDLE BAR FRAME
3 5	335-0073	NEEDLE BAR FRAME FULCRUM STUD
3 6	335-0074	SCREW
3 7A	335-0075	UPPER FEED DRIVING CRANK GIB ASM.
3 8	335-0076	SCREW
3 9	335-0077	UPPER FEED DRIVING CRANK GIB
4 0	335-0078	GUIDE
4 1A	335-0079	NEEDLE BAR WITH SCREW
4 2	335-0080	SCREW
4 3	335-0081	NEEDLE BAR
4 4	335-0082	SCREW

# 3

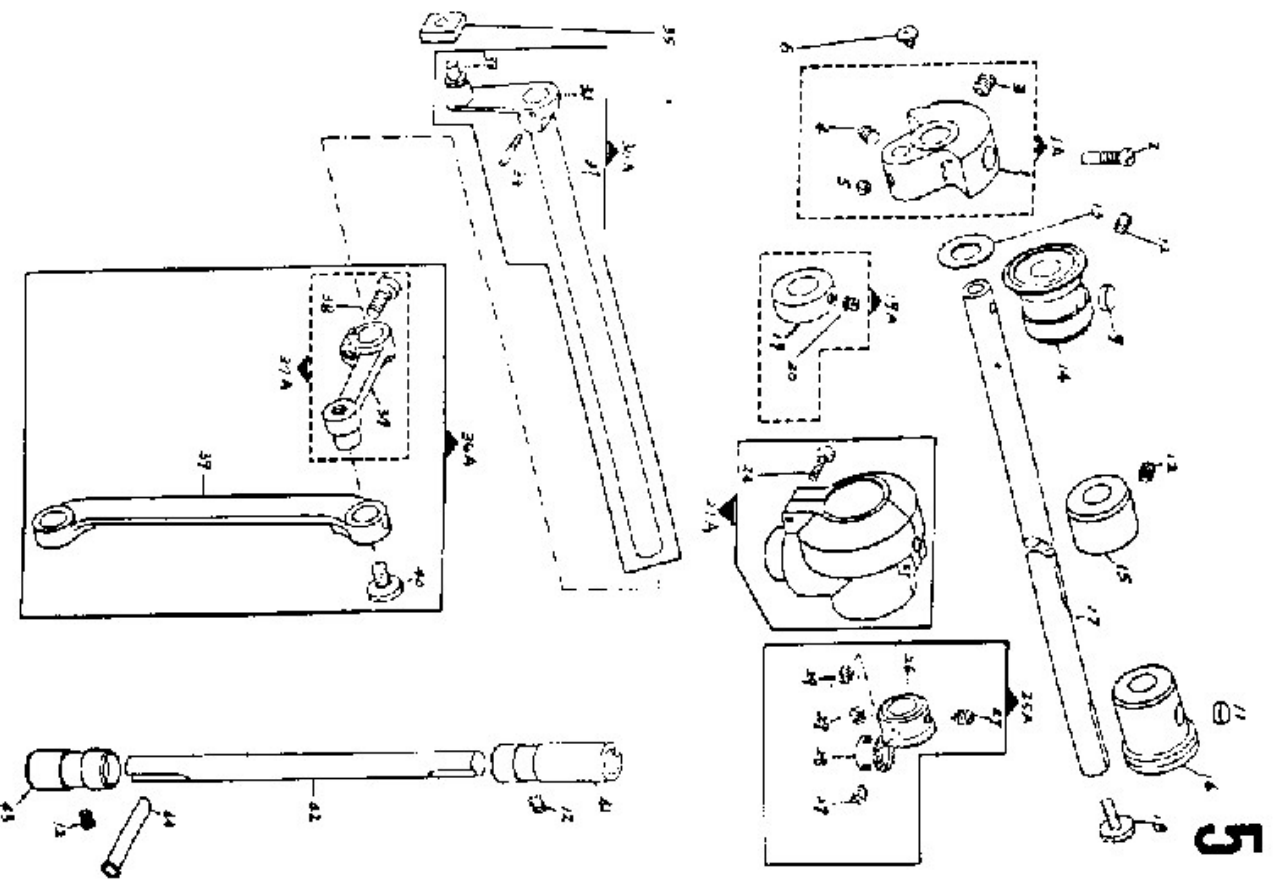


REF. NO.	PART NO.	DESCRIPTION
P.3-1	335-0083	SET SCREW
2	335-0084	CENTER SCREW
3	335-0085	GUIDE BUSHING
5	335-0086	PRESSER BAR SPRING, OUTER
6	335-0087	PRESSER BAR GUIDE COLLAR
6 A	335-0088	PRESSER BAR GUIDE COLLAR & SCREW
7	335-0089	PRESSER BAR
7 A	335-0090	PRESSER BAR & SCREW
9	335-0091	SCREW
9	335-0092	PRESSER FOOT(FOR BINDING)
9 A	335-0093	PRESSER FOOT(FOR NORMAL SEWING)
10	335-0094	PRESSER BAR LIFTER
11	335-0095	HINGE SCREW
12	335-0096	SPRING STUD
13	335-0097	PRESSURE SPRING, INNER
14	335-0098	PRESSER BAR LIFTING LEVER
15	335-0099	SCREW
16	335-0100	SCREW
17	335-0101	SPRING RECEPTACLE
18	335-0102	TENSION RELEASE GUIDE
1 3A	335-0103	SPRING
2 0	335-0104	SPRING, INNER
2 1	335-0105	SPRING, OUTER
2 2	335-0106	PRESSER PIN
2 3	335-0107	TENSION RELEASE LEVER
2 4	335 0108	SCREW
2 5	335-0109	WASHER
2 6	335 0110	LEVER HINGE
2 7A	335-0111	FINGER GUARD ASM

4

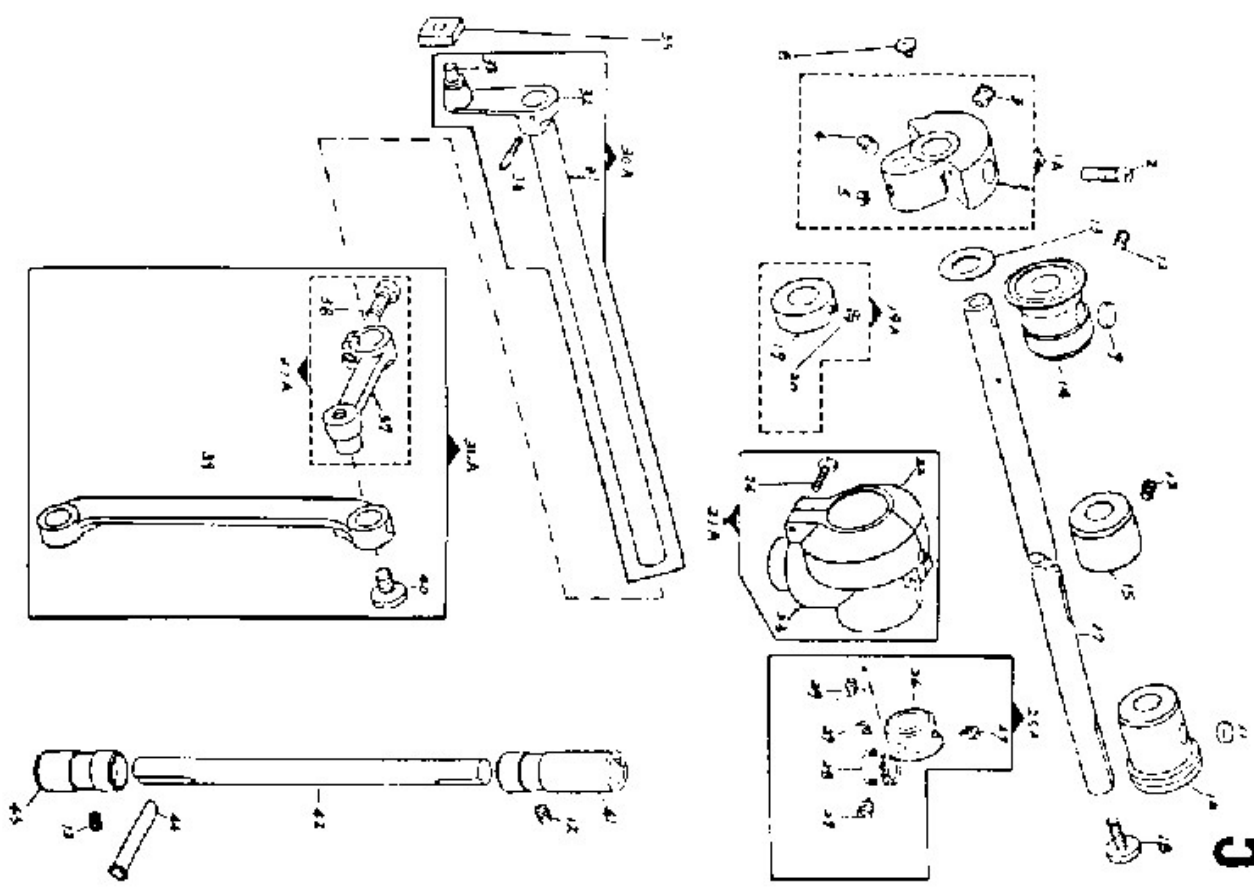


REF. NO.	PART NO.	DESCRIPTION
P.4-1	335-0112	RELEASE PIN
2 A	335-0113	TENSION COMPLETE
3	335-0114	SCREW
4	335-0115	RELEASE PLATE
5	335-0116	PIN
6	335-0117	TENSION CARRIER
7	335-0118	PIN
8	335-0119	TENSION POST
9	335-0120	TENSION DISC
10	335-0121	DISC WASHER
11	335-0122	SPRING
12	335-0123	WASHER
13	335-0124	NUT
14	335-0125	SPRING
15	335-0126	STUD
16	335-0127	THREAD DISC
17	335-0128	SCREW
18	335-0129	PIN
19	335-0130	SCREW
20	335-0131	THREAD TENSION STUD
21	335-0132	SCREW
22	335-0133	SPRING
23	335-0134	SUPPORT
24	335-0135	SCREW
25	335-0136	SPRING GUIDE
26	335-0137	ARM THREAD GUIDE
27	335-0138	SCREW
28	335-0139	THREAD GUIDE WIRE
29	335-0140	SCREW

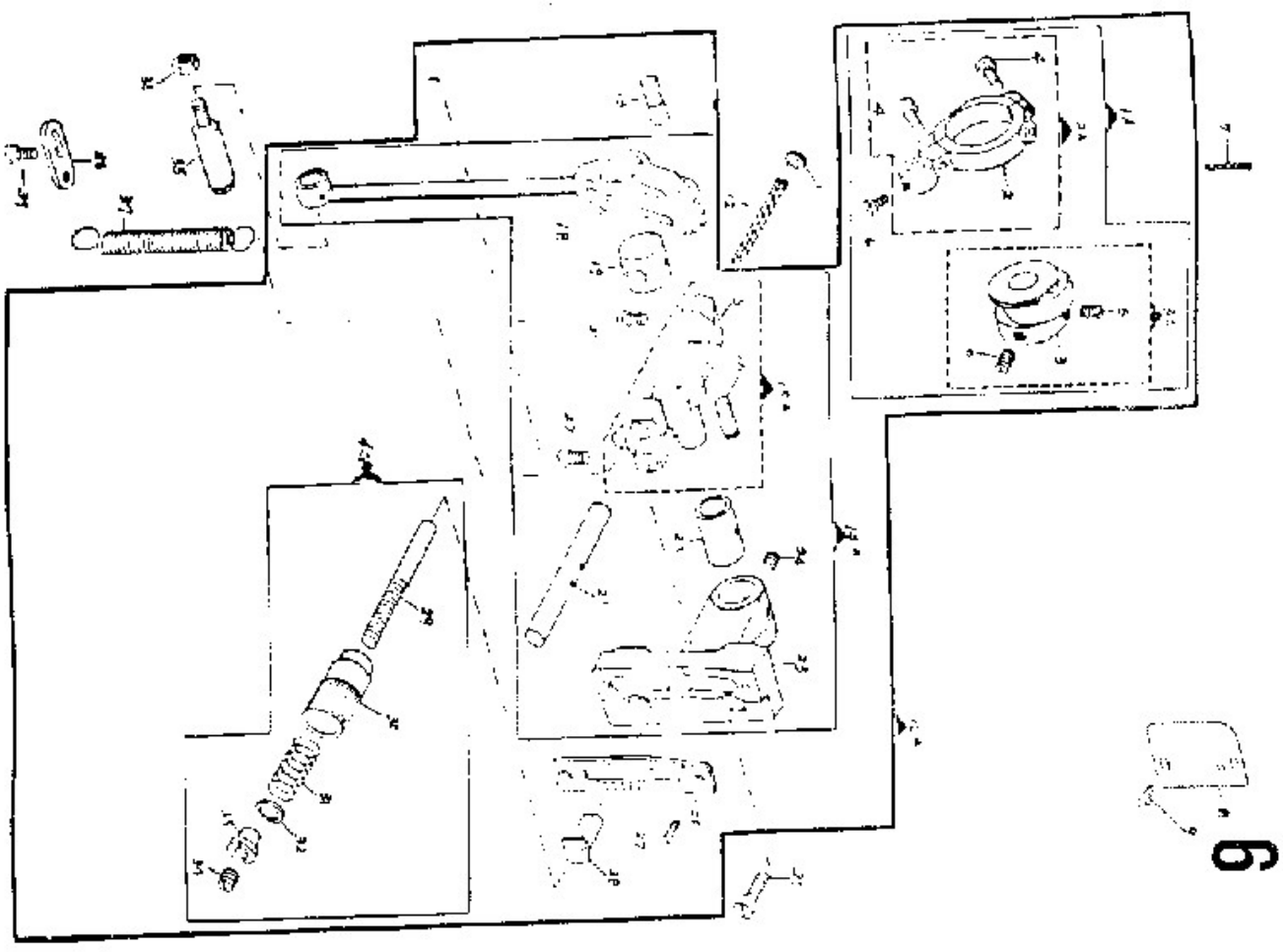


REF NO	PART NO	DESCRIPTION
P.5-1		
1 A	335-0141	ARM SHAFT CRANK
2	335-0142	ARM SHAFT CRANK WITH SCREW
3	335-0143	SET SCREW
4	335-0144	FASTENING SCREW
5	335-0145	FASTENING SCREW
6	335-0146	FASTENING SCREW
9	335-0147	SCREW
11	335-0148	FELT
12	335-0149	FELT
13	335-0150	SCREW
14	335-0151	WASHER
15	335-0152	ARM SHAFT BUSHING.FRONT
16	335-0153	ARM SHAFT BUSHING.CENTER
17	335-0154	ARM SHAFT BUSHING.REAR
18	335-0155	ARM SHAFT
19	335-0156	SCREW
19A	335-0157	COLLAR
20	335-0158	COLLAR WITH SCREW
21A	335-0159	SCREW
24	335-0160	BEVEL GEAR CASE COMPLETE
25A	335-0161	SCREW
26	335-0162	GEAR SET
27	335-0163	GEAR
28	335-0164	SCREW
29	335-0165	GEAR
30A	335-0166	SCREW
31	335-0167	NEEDLE FEED DRIVING SHAFT ASM.
32	335-0168	SHAFT
33	335-0169	CRANK
33	335-0170	STUD

# 5



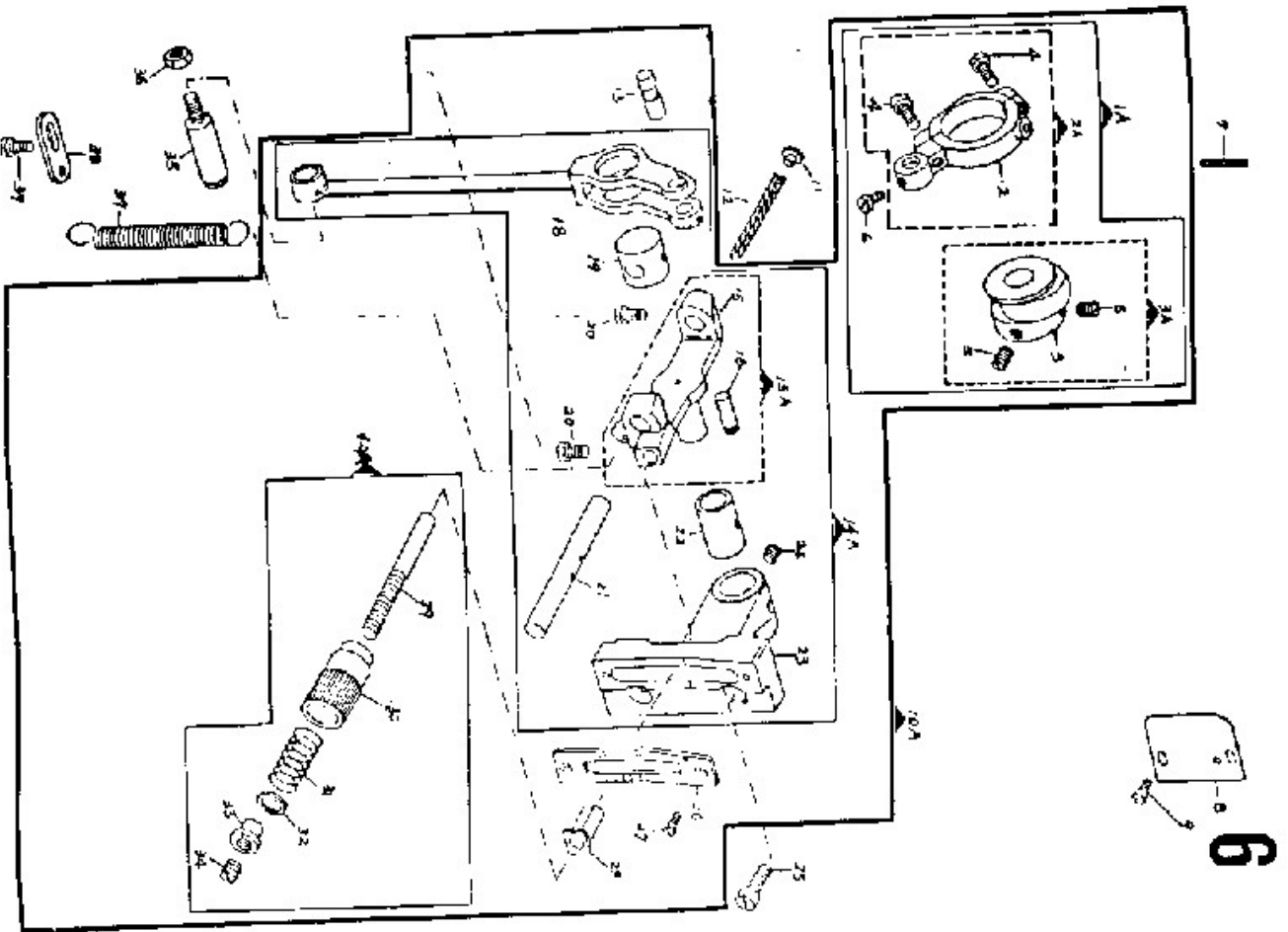
REF. NO.	PART NO.	DESCRIPTION
P. 5-3	335-0171	PIN
4	335-0172	SLIDE BLOCK
3 5	335-0173	DRIVING SHAFT CONN. ROD & CRANK
3 6A	335-0174	DRIVING SHAFT CRANK
3 7	335-0175	DRIVING SHAFT CRANK & SCREW
3 7A	335-0176	SCREW
3 8	335-0177	DRIVING SHAFT CONNECTING ROD
3 9	335-0178	HINGE SCREW
4 0	335-0179	SHAFT BUSHING (VERTICAL UPPER GEAR)
4 1	335-0180	BEVEL GEAR SHAFT, VERTICAL
4 2	335-0181	SHAFT BUSHING (VERTICAL LOWER GEAR)
4 3	335-0182	OIL TUBE
4 4		



6

REF. NO.	PART NO.	DESCRIPTION
P 6-1 A	335-0183	ECCENTRIC & ROD JOINT CAP
2 A A	335-C184	FEED DRIVING ROD JOINT CAP
3 A	335-C185	FEED DRIVING ECCENTRIC
4	335 0186	SCREW
5	335-0187	SCREW
6	335-0188	SCREW
7	335 0189	WICK
8	335-0190	PLATE
9	335-0191	SCREW
1 0A	335-0192	FEED DRIVING ASM COMPLETE
1 1	335-0193	NIPPLE
1 2	335-0194	WICK
1 3	335-0195	FULCRUM STUD
1 4A	335-0196	FEED DRIVING ASM.
1 5	335-0197	STITCH REGULATOR
1 5A	335-0198	STITCH REGULATOR WITH SCREW
1 6	335-0199	PIN
1 8	335-0200	FEED DRIVING ROD
1 9	335-0201	FEED DRIVING ROD FULCRUM JOINT
2 0	335-0202	SCREW
2 1	335-0203	STITCH REGULATOR SPINDLE
2 2	335-0204	BUSHING
2 3	335-0205	STITCH REGULATOR BEARING BLOCK
2 4	335-0206	SCREW
2 5	335-0207	SCREW
2 6	335-0208	STITCH REGULATOR SCALE
2 7	335-0209	SCREW
2 8	335-0210	STITCH REGULATOR STUD STOP WASHER
2 9	335-0211	STITCH REGULATOR STUD
3 0	335-0212	STITCH REGULATOR THUMB NUT
3 1	335-0213	SPRING
3 2	335-0214	WASHER
3 3	335-0215	NUT
3 4	335-0216	SCREW
3 5	335-0217	HINGE SCREW

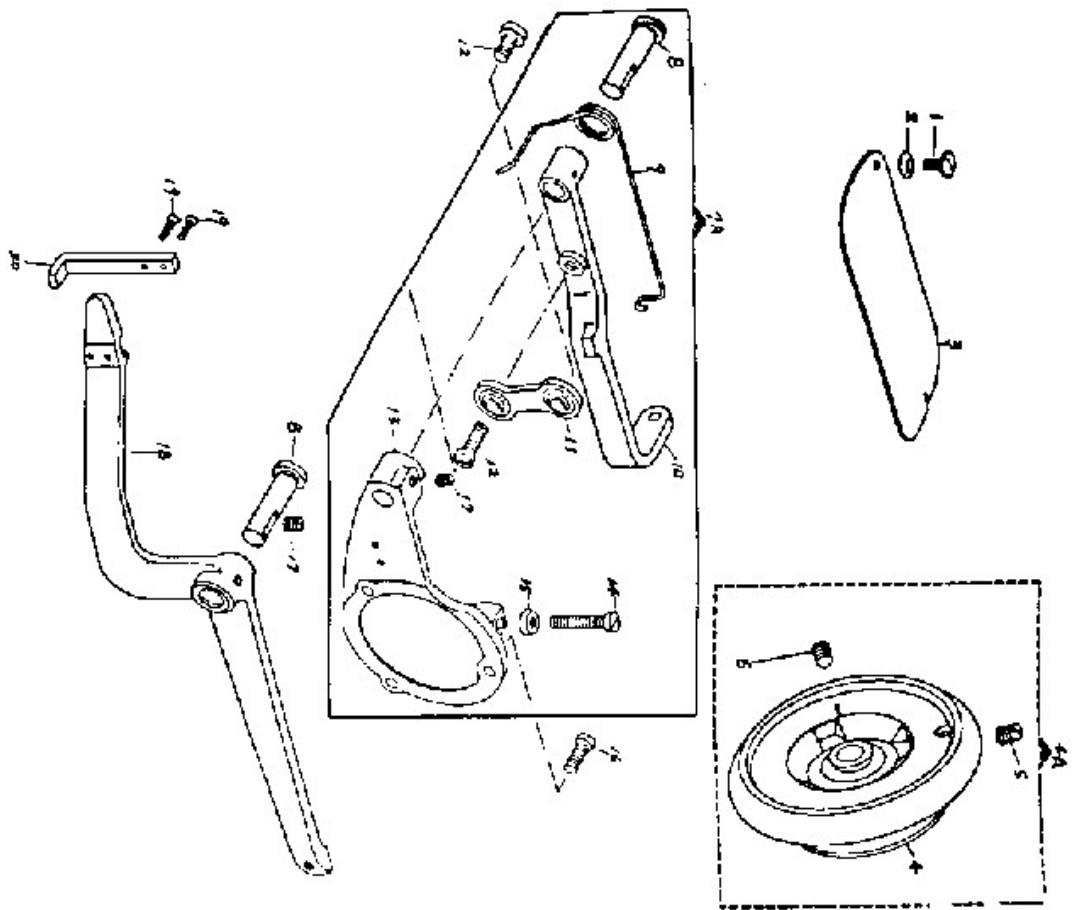




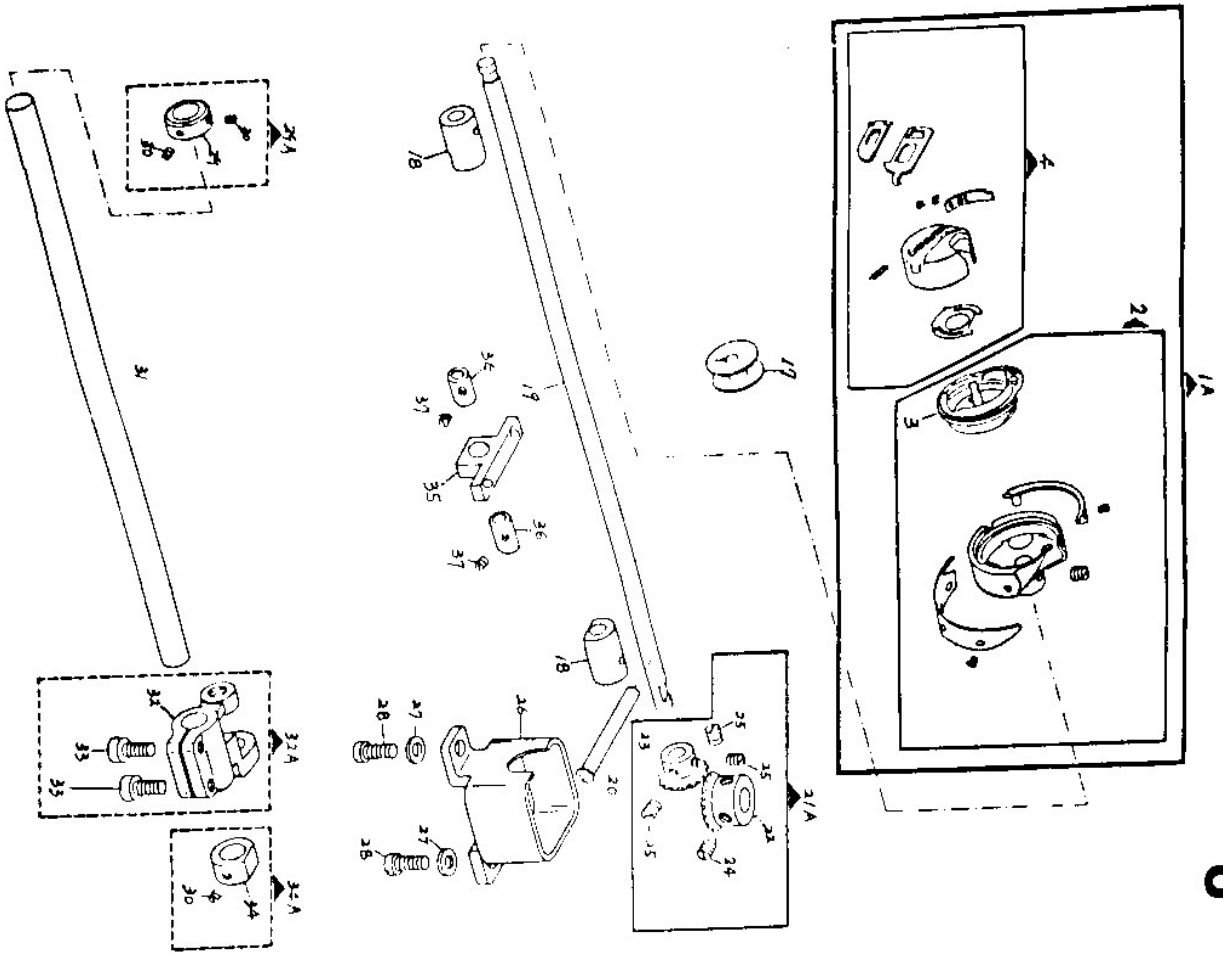
**6**

REF. NO.	PART NO.	DESCRIPTION
P. 6	335-0218	NUT
3 6	335-0219	TENSION SPRING
3 7	335-0220	SHACKLE REGULATOR
3 8	335-0221	SCREW
3 9	335-0222	STITCH REGULATOR ASM.
4 OA		

# 7

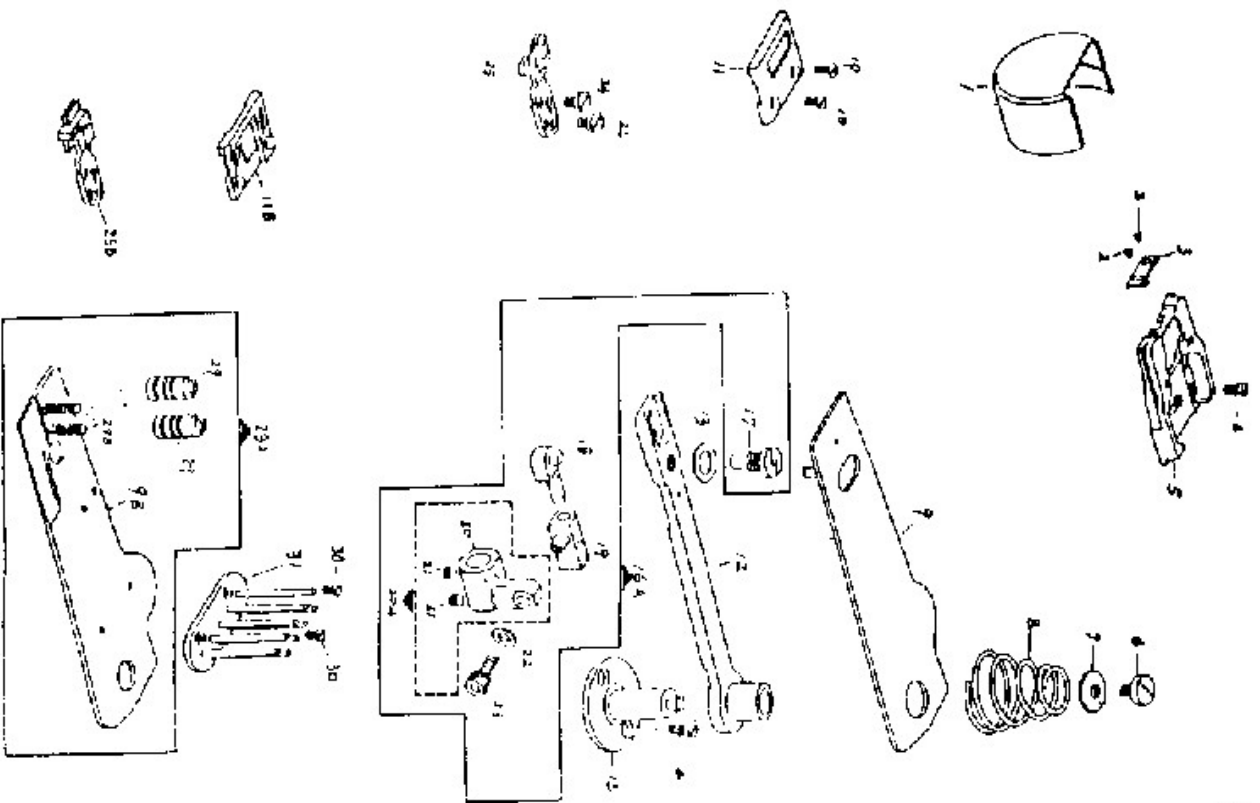


REF. NO.	PART NO.	DESCRIPTION
P.7-1	335-0223	SCREW
2	335-0224	WASHER
3	335-0225	ARM COVER
4	335-0226	BALANCE WHEEL
4 A	335-0227	BALANCE WHEEL WITH SCREW
5	335-0228	SCREW
6	335-0229	SCREW
7 A	335-0230	PRESSER BAR LIFTER ASM.
8	335-0231	HINGE STUD
9	335-0232	TENSION SPRING
10	335-0233	FOOT LIFTER LEVER
11	335-0234	PRESSER BAR LIFTER LINK
12	335-0235	SCREW
13	335-0236	ARM COVER, REAR
14	335-0237	SCREW
15	335-0238	NUT
16	335-0239	SCREW
17	335-0240	SCREW
18	335-0241	KNEE LIFTER
19	335-0242	SCREW
20	335-0243	LIFTING BRACKET

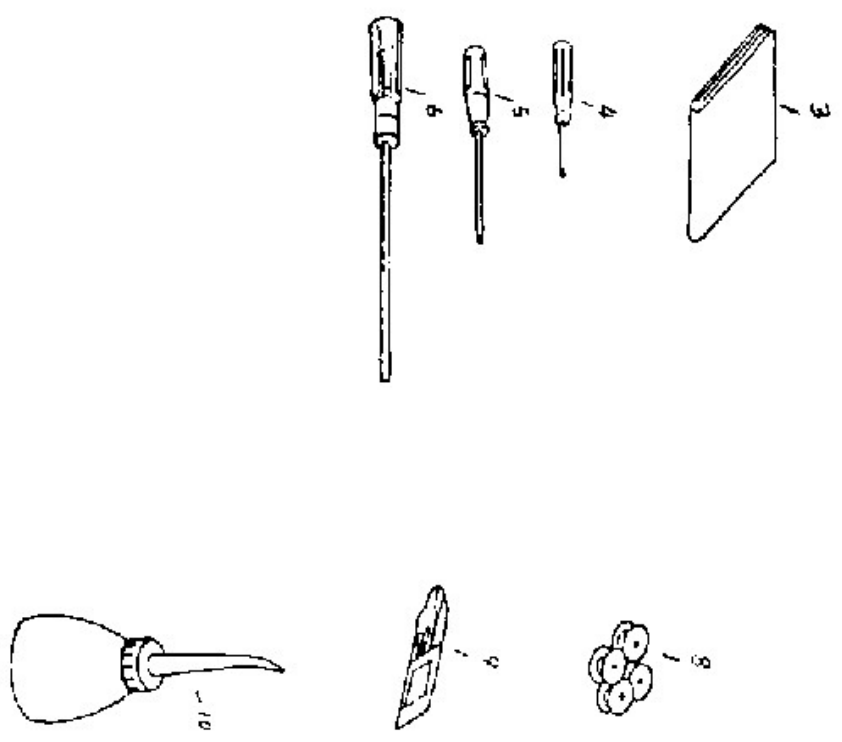
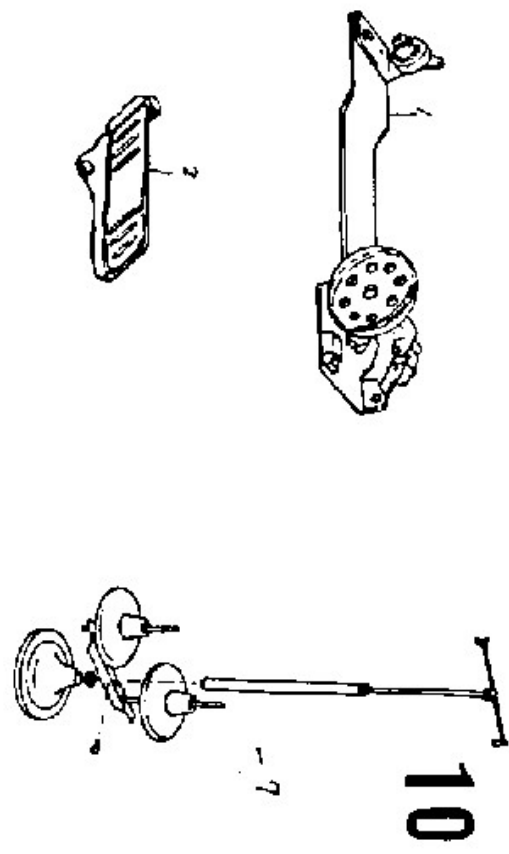


REF. NO.	PART NO.	DESCRIPTION
P. 8-1 A	335-0244	HOOK & BOBBIN CASE COMPLETE
2	335-0245	HOOK ASM.
3	335-0246	BOBBIN CASE BASE
4	335-0247	BOBBIN CASE ASM.
1 7	335-0248	BOBBIN
1 8	335-0249	HOOK DRIVING SHAFT BUSHING
1 9	335-0250	HOOK DRIVING SHAFT
2 0	335-0251	OIL TUBE
2 1	335-0252	GEAR SET
2 2	335-0253	GEAR
2 3	335-0254	GEAR
2 4	335-0255	GEAR
2 5	335-0256	SCREW
2 6	335-0257	SCREW
2 7	335-0258	LOWER BEVEL GEAR SET CASING
2 8	335-0259	WASHER
2 9	335-0260	SCREW
2 9A	335-0261	SCREW
3 0	335-0262	COLLAR
3 1	335-0263	COLLAR SET
3 2	335-0264	SCREW
3 2A	335-0265	FEED DRIVING SHAFT CRANK
3 3	335-0266	FEED DRIVING SHAFT CRANK & SCREW
3 4	335-0267	SCREW
3 4A	335-0268	COLLAR
		COLLAR SET

# 9

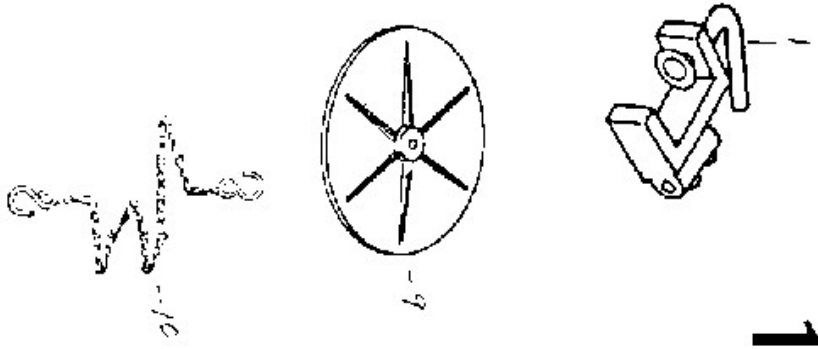


REF. NO.	PART NO.	DESCRIPTION
P.9-1	335-0269	HOOK COVER
2	335-0270	SCREW
3	335-0271	BOBBIN CASE BASE STOPPER
4	335-0272	SCREW
5	335-0273	BASE
6	335-0274	SCREW
7	335-0275	WASHER
8	335-0276	SPRING
9	335-0277	PLATE(FOR NORMAL SEWING)
9 B	335-0278	PLATE(FOR BINDING)
10	335-0279	SCREW
11	335-0280	NEEDLE PLATE(NORMAL SEWING)
11 B	335-0281	NEEDLE PLATE(BINDING)
12	335-0282	FEED DRIVING ARM
13	335-0283	WASHER
14	335-0284	SCREW
15	335-0285	FEED DRIVING ARM BASE
16A	335-0286	FEED DRIVING CONNECTING ASM.
17	335-0287	SCREW
18	335-0288	FEED DRIVING STUD
19	335-0289	FEED DRIVING LINK
20	335-0290	FEED DRIVING SHAFT CRANK
20A	335-0291	FEED DRIVING SHAFT CRANK SET
21	335-0292	SCREW
22	335-0293	WASHER
23	335-0294	SCREW
24	335-0295	SCREW
25	335-0296	FEED DOG(NORMAL SEWING)
25B	335-0297	FEED DOG(BINDING)
28A	335-0298	GAUGE PLATE SET
29	335-0299	SCREW
29B	335-0300	SCREW
30	335-0301	SCREW
31	335-0302	TAPE GUIDE



REF. NO.	PART NO.	DESCRIPTION
P. 10-1	335-0303	BOBBIN WINDER
2	335-0304	THREAD
3	335-0305	BOB
4	335-0306	SCREW DRIVER S.
5	335-0307	SCREW DRIVER M.
6	335-0308	SCREW DRIVER L.
7	335-0309	THREAD STAND
8	335-0310	BOBBIN
9	335-0311	NEEDLE
10	335-0312	OIL CAN

# 11



REF. NO.	PART NO.	DESCRIPTION
P. 11-1	335-0313	HINGE
2	335-0314	PIN
3	335-0315	COLLAR
4	335-0316	SCREW
5	335-0317	SCREW
6	335-0318	WASHER
7	335-0319	NUT
8	335-0320	CUSHION
9	335-0321	TAPE REEL
10	335-0322	CHAIN