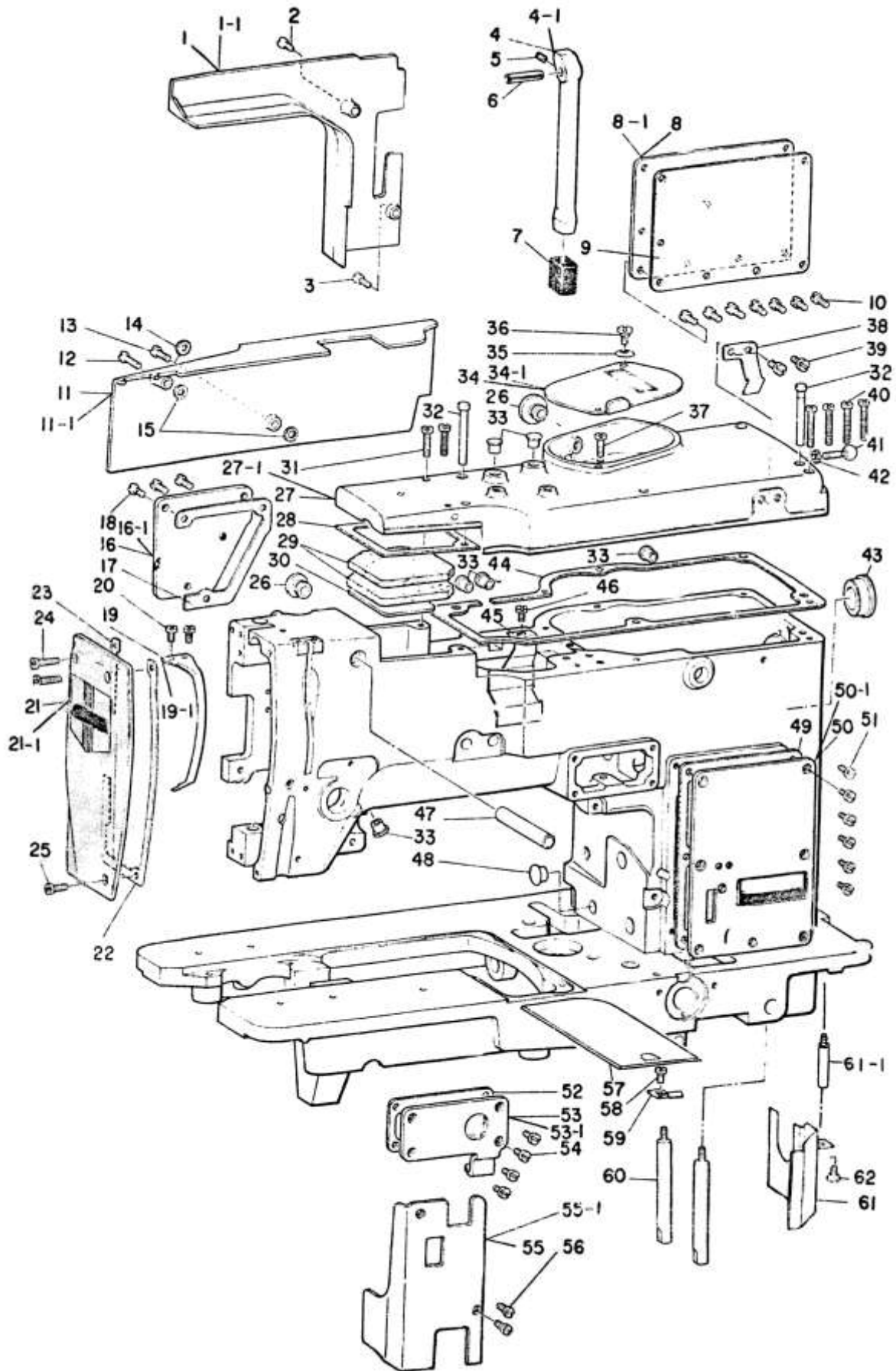


1. FRAME & MISCELLANEOUS COVER COMPONENTS

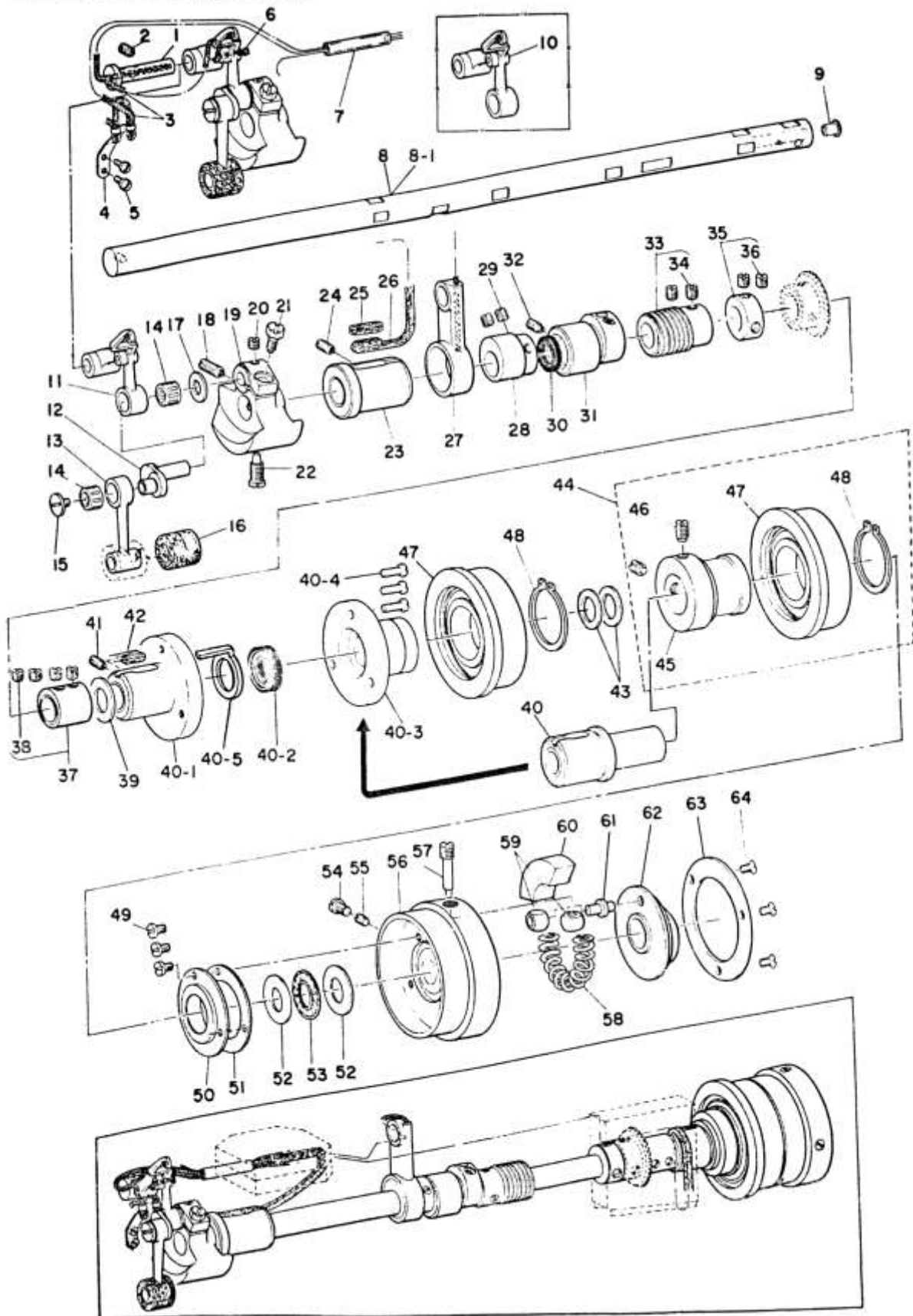
TK888



| Ref. No. | Note | Part No.        | Description                    |                          | Amt. Req. |
|----------|------|-----------------|--------------------------------|--------------------------|-----------|
| 1        |      | 81130-771-000-A | FRAME SIDE COVER (B)           | צוקמחח"א - B             | 1         |
| 1-1      | COI  | 81130-771-00A-A | FRAME SIDE COVER (B)           | צוקמחח"א - B             | 1         |
| 2        |      | SS-4111015-SP   | SCREW 11/64-40 L=14            | דבלצדנ"א 11/64-40 L=14   | 1         |
| 3        |      | SS-4110815-SP   | SCREW 11/64-40 L= 8.5          | דבלצדנ"א 11/64-40 L=8.5  | 1         |
| 4        |      | 81154-771-000   | MACHINE ARM SUPPORT ROD        | פ-ל שפג                  | 1         |
| 4-1      | COI  | 81154-771-00A   | MACHINE ARM SUPPORT ROD        | פ-ל שפג                  | 1         |
| 5        |      | SS-R110510-SP   | SCREW 11/64-40 L=5             | דבלצדנ"א 11/64-40 L=5    | 1         |
| 6        |      | 81120-761-000   | PIN                            | פין                      | 1         |
| 7        |      | 81118-771-000   | RUBBER CUSHION                 | פ-ל שפג-ב"ל              | 1         |
| 8        |      | 81116-771-000   | SIDE COVER (C)                 | פ-ל צוקמחח"א - C         | 1         |
| 8-1      | COI  | 81116-771-00A   | SIDE COVER (C)                 | פ-ל צוקמחח"א - C         | 1         |
| 9        |      | 81152-771-000   | SIDE COVER GASKET (C)          | פ-ל צוקמחח"א - ח"א שפג   | 1         |
| 10       |      | SS-4110915-SP   | SCREW 11/64-40 L= 8.5          | דבלצדנ"א 11/64-40 L=8.5  | 2         |
| 11       |      | 81139-771-000   | FRAME SIDE COVER (C)           | צוקמחח"א - C             | 1         |
| 11-1     | COI  | 81139-771-00A   | FRAME SIDE COVER (C)           | צוקמחח"א - C             | 1         |
| 12       |      | SS-4111815-SP   | SCREW 11/64-40 L=18            | דבלצדנ"א 11/64-40 L=18   | 1         |
| 13       |      | SS-4111415-SP   | SCREW 11/64-40 L=14            | דבלצדנ"א 11/64-40 L=14   | 1         |
| 14       |      | 81144-771-000   | CUSHION                        | צוקמחח"א - ח"א שפג       | 1         |
| 15       |      | 81144-771-000   | FRAME SIDE COVER GASKET (C)    | צוקמחח"א - ח"א שפג       | 2         |
| 16       |      | 81153-781-000   | LEFT SIDE COVER                | צוקמחח"א -               | 1         |
| 16-1     | COI  | 81153-781-00A   | LEFT SIDE COVER                | צוקמחח"א -               | 1         |
| 17       |      | 81144-771-000   | SIDE COVER GASKET              | צוקמחח"א - ח"א שפג       | 1         |
| 18       |      | SS-4110915-SP   | SCREW 11/64-40 L= 8.5          | דבלצדנ"א 11/64-40 L=8.5  | 3         |
| 19       |      | 81123-881-000   | THREAD TAKE-UP LEVER OIL GUARD | פנל צוקמחח"א -           | 1         |
| 19-1     | COI  | 81123-771-000   | THREAD TAKE-UP LEVER OIL GUARD | פנל צוקמחח"א -           | 1         |
| 20       |      | SS-4090515-SP   | SCREW 9/64-40 L=9              | דבלצדנ"א 9/64-40 L=9     | 2         |
| 21       |      | 81112-771-0A0   | FACE COVER COMPLETE            | פנל צוקמחח"א -           | 1         |
| 21-1     | COI  | 81112-771-0AA   | FACE COVER COMPLETE            | פנל צוקמחח"א -           | 1         |
| 22       |      | 81149-771-000   | GASKET                         | פנל צוקמחח"א - ח"א שפג   | 1         |
| 23       |      | 81151-771-000   | FACE PLATE GASKET (R)          | פנל צוקמחח"א - ח"א שפג   | 1         |
| 24       |      | SS-4111415-SP   | SCREW 11/64-40 L=18            | דבלצדנ"א 11/64-40 L=18   | 2         |
| 25       |      | SS-4110915-SP   | SCREW 11/64-40 L=10.5          | דבלצדנ"א 11/64-40 L=10.5 | 1         |
| 26       |      | TA-1250704-R0   | RUBBER PLUG                    | פנל צוקמחח"א -           | 2         |
| 27       |      | 81103-771-000   | TOP COVER                      | פנל צוקמחח"א -           | 1         |
| 27-1     | COI  | 81103-771-00A   | TOP COVER                      | פנל צוקמחח"א -           | 1         |
| 28       |      | 81110-771-000   | TOP COVER GASKET, FRONT        | פנל צוקמחח"א - ח"א שפג   | 1         |
| 29       |      | 81117-771-000   | OIL FELT                       | פנל צוקמחח"א - ח"א שפג   | 2         |
| 30       |      | 81143-771-000   | OIL FELT RETAINER              | פנל צוקמחח"א - ח"א שפג   | 1         |
| 31       |      | SS-4111815-SP   | SCREW 11/64-40 L=18            | דבלצדנ"א 11/64-40 L=18   | 2         |
| 32       |      | 81108-741-000   | TOP COVER POSITION PIN         | פנל צוקמחח"א - ח"א שפג   | 6         |
| 33       |      | TA-0750704-R0   | RUBBER PLUG                    | פנל צוקמחח"א -           | 1         |
| 34       |      | 81106-761-000   | GEAR CASE COVER                | פנל צוקמחח"א -           | 1         |
| 34-1     | COI  | 81106-761-00A   | GEAR CASE COVER                | פנל צוקמחח"א -           | 1         |
| 35       |      | 81125-155-000   | DISC SPRING                    | פנל צוקמחח"א -           | 1         |
| 36       |      | SD-0640241-SP   | HINGE SCREW D= 6.35 H= 2.4     | דבלצדנ"א D=6.35 H=2.4    | 1         |
| 37       |      | SS-7111310-SP   | SCREW 11/64-40 L=12.8          | דבלצדנ"א 11/64-40 L=12.8 | 1         |
| 38       |      | 8292A-771-000   | HAND STOP LATCH                | פנל צוקמחח"א - ח"א שפג   | 1         |
| 39       |      | SS-7110710-SP   | SCREW 11/64-40 L=7             | דבלצדנ"א 11/64-40 L=7    | 2         |
| 40       |      | SS-7112420-SP   | SCREW 11/64-40 L=24            | דבלצדנ"א 11/64-40 L=24   | 4         |
| 41       |      | 81120-352-000   | BALL SCREW                     | פנל צוקמחח"א -           | 1         |
| 42       |      | NS-8120110-SP   | NUT 3/16-28                    | פנל צוקמחח"א -           | 1         |
| 43       |      | TA-2101002-R0   | RUBBER PLUG                    | פנל צוקמחח"א -           | 1         |
| 44       |      | 81102-771-000   | TOP COVER GASKET, REAR         | פנל צוקמחח"א - ח"א שפג   | 1         |
| 45       |      | 83558-771-000   | ARM OIL SHIELD                 | פנל צוקמחח"א - ח"א שפג   | 1         |
| 46       |      | SS-7110710-SP   | SCREW 11/64-40 L=7             | דבלצדנ"א 11/64-40 L=7    | 1         |
| 47       |      | 82743-771-000   | KNIFE STOP LEVER SHAFT GUIDE   | פנל צוקמחח"א - ח"א שפג   | 1         |
| 48       |      | TA-1050504-R0   | RUBBER PLUG                    | פנל צוקמחח"א -           | 1         |
| 49       |      | 81111-771-000   | SIDE COVER (A) GASKET          | פנל צוקמחח"א - ח"א שפג   | 1         |
| 50       |      | 81114-771-000   | SIDE COVER (A)                 | פנל צוקמחח"א - A         | 1         |
| 50-1     | COI  | 81114-771-00A   | SIDE COVER (A)                 | פנל צוקמחח"א - A         | 1         |
| 51       |      | SS-4110915-SP   | SCREW 11/64-40 L= 8.5          | דבלצדנ"א 11/64-40 L=8.5  | 6         |
| 52       |      | 81133-771-000   | OIL SIGHT WINDOW GASKET        | פנל צוקמחח"א - ח"א שפג   | 1         |
| 53       |      | 81115-771-0A0   | SIDE COVER ASM. B              | פנל צוקמחח"א - B         | 1         |
| 53-1     | COI  | 81115-771-0AA   | SIDE COVER ASM. B              | פנל צוקמחח"א - B         | 1         |
| 54       |      | SS-4110915-SP   | SCREW 11/64-40 L= 8.5          | דבלצדנ"א 11/64-40 L=8.5  | 4         |
| 55       |      | 81129-771-000   | SIDE COVER (A)                 | פנל צוקמחח"א - A         | 1         |
| 55-1     | COI  | 81129-771-00A   | SIDE COVER (A)                 | פנל צוקמחח"א - A         | 1         |
| 56       |      | SS-4110915-SP   | SCREW 11/64-40 L= 8.5          | דבלצדנ"א 11/64-40 L=8.5  | 2         |
| 57       |      | 81121-761-000   | BED SLIDE                      | פנל צוקמחח"א -           | 1         |
| 58       |      | SS-7110710-SP   | SCREW 11/64-40 L=7             | דבלצדנ"א 11/64-40 L=7    | 1         |
| 59       |      | 81134-741-000   | BED SLIDE SPRING               | פנל צוקמחח"א - ח"א שפג   | 1         |
| 60       |      | 81162-771-00A   | BED SCREW STUD                 | פנל צוקמחח"א - ח"א שפג   | 2         |
| 61       |      | 83543-771-0A0-A | BED OIL SHIELD                 | פנל צוקמחח"א - ח"א שפג   | 1         |
| 61-1     |      | 83549-850-000   | BED OIL SHIELD STUD            | פנל צוקמחח"א - ח"א שפג   | 1         |
| 62       |      | SS-7110510-SP   | SCREW 11/64-40 L=5             | דבלצדנ"א 11/64-40 L=5    | 1         |

Note COI..... For Urban White

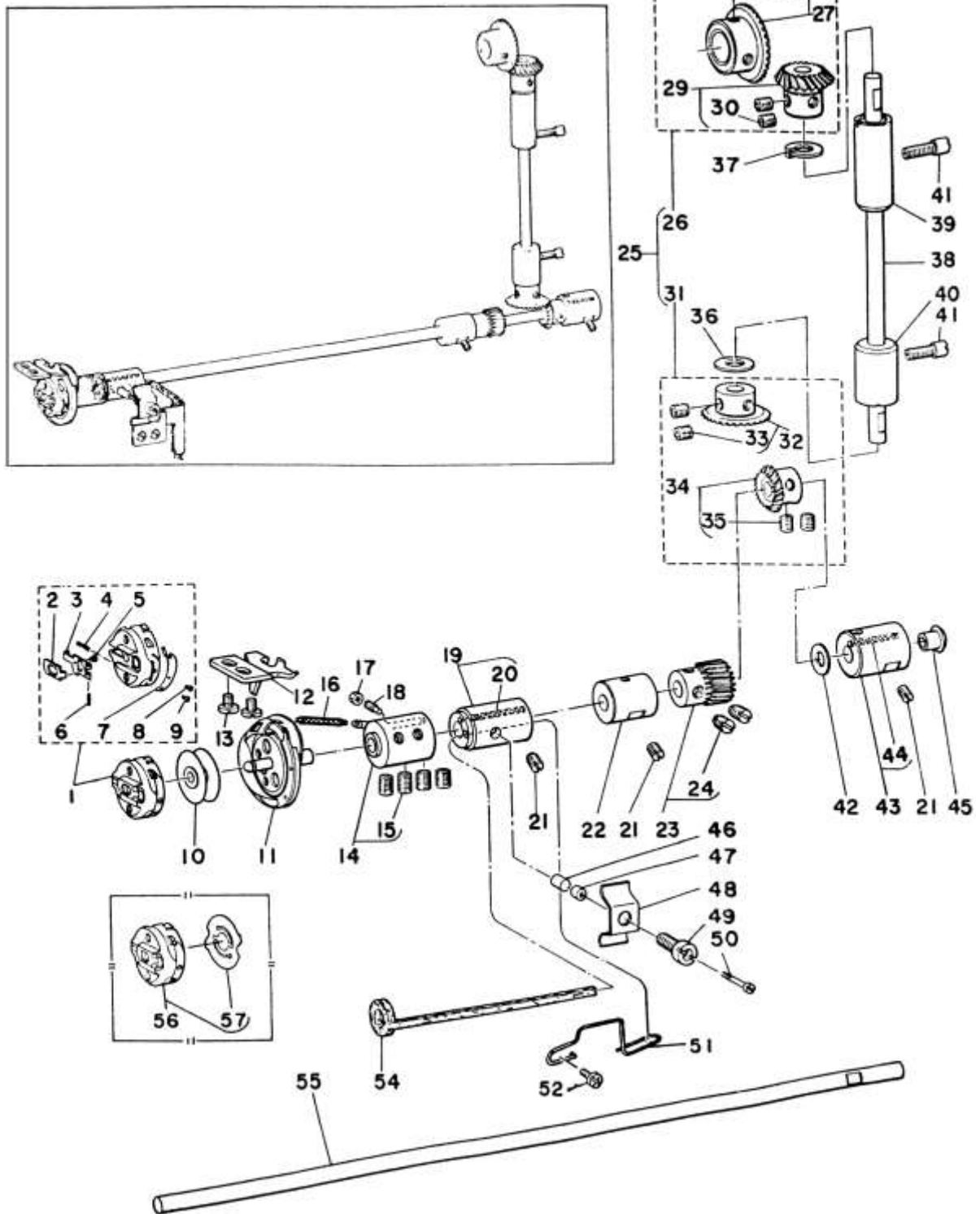
## 2. MAIN SHAFT COMPONENTS



| Ref. No. | Note | Part No.        | Description                         | Amt. Req. |
|----------|------|-----------------|-------------------------------------|-----------|
| 1        |      | B1404-761-000   | HINGE STUD                          | 1         |
| 2        |      | SS-8151150-SP   | SCREW 15/64-28 L=10.5               | 1         |
| 3        |      | CQ-2520000-00   | OIL WICK                            | 0,3       |
| 4        |      | B1409-761-000   | OIL WICK HOLDER                     | 1         |
| 5        |      | SS-7090510-SP   | SCREW 9/64-40 L= 4,6                | 2         |
| 6        |      | B1147-125-000   | OIL WICK SNAP RING                  | 1         |
| 7        |      | BP-6000000-00   | VINYL TUBE, WHITE D=6               | 0,1       |
| 8        | *    | B1201-771-000   | MAIN SHAFT                          | -         |
| 8-1      | *    | B1201-771-000-A | MAIN SHAFT                          | 1         |
| 9        |      | TA-0550604-RO   | RUBBER PLUG                         | 1         |
| 10       | 001  | B1901-761-BA0   | THREAD TAKE-UP LEVER ASM., CERAMICS | 1         |
| 11       |      | B1901-761-OA0   | THREAD TAKE-UP LEVER ASM.           | 1         |
| 12       |      | B1203-771-000   | NEEDLE BAR CRANK                    | 1         |
| 13       |      | B1204-761-000   | NEEDLE BAR CRANK CONNECTING ROD     | 1         |
| 14       | 002  | B1905-541-800   | NEEDLE BEARING, B                   | 2         |
| 15       |      | B1903-552-000   | END SCREW LEFT                      | 1         |
| 16       |      | B2615-232-000   | OIL FELT WASHER                     | 1         |
| 17       |      | B1223-771-000   | THRUST WASHER,                      | 1         |
| 18       |      | SS-8681650-TP   | SCREW 9/32-28 L=16                  | 1         |
| 19       |      | B1202-771-000   | COUNTERWEIGHT                       | 1         |
| 20       |      | SS-8660610-TP   | SCREW 1/4-40 L=6                    | 1         |
| 21       |      | SS-9661230-CP   | SCREW 1/4-40 L=12                   | 1         |
| 22       |      | SS-7681750-TP   | SCREW 9/32-28 L=16,5                | 1         |
| 23       |      | B1204-771-000-A | BUSHING, FRONT                      | 1         |
| 24       |      | SS-8150710-SP   | SCREW 15/64-28 L=7                  | 2         |
| 25       |      | B1212-012-000   | OIL FELT                            | 1         |
| 26       |      | B3541-012-000   | OIL WICK                            | 1         |
| 27       |      | B2720-761-000   | KNIFE BAR DRIVING CONNECTING ROD    | 1         |
| 28       |      | B2722-761-000   | KNIFE BAR DRIVING ECCENTRIC         | 1         |
| 29       |      | SS-8660810-TP   | SCREW 1/4-40 L=8                    | 2         |
| 30       |      | B1208-552-000-A | OIL SEAL                            | 1         |
| 31       |      | B1205-771-000-A | MAIN SHAFT BUSHING, INTERMEDIATE    | 1         |
| 32       |      | SS-8151150-SP   | SCREW 15/64-28 L=10.5               | 1         |
| 33       |      | B2920-761-OA0   | WORM ASM.                           | 1         |
| 34       |      | SS-8660610-TP   | SCREW 1/4-40 L=6                    | (2)       |
| 35       |      | CS-147121B-SH   | THRUST COLLAR ASM. D=14,72 W=12     | 1         |
| 36       |      | SS-8660530-TP   | SCREW 1/4-40 L= 4,5                 | (2)       |
| 37       |      | B1222-771-OA0   | MAIN SHAFT THRUST COLLAR ASM.       | 1         |
| 38       |      | SS-8660530-TP   | SCREW 1/4-40 L= 4,5                 | (4)       |
| 39       |      | B1229-771-000   | MAIN SHAFT THRUST WASHER (C)        | 1         |
| 40       | *    | B1206-771-000   | MAIN SHAFT BUSHING, REAR            | -         |
| 40-1     | *    | B1256-781-000-A | MAIN SHAFT BUSHING, REAR            | 1         |
| 40-2     | *    | B1208-552-000-A | OIL SEAL                            | 1         |
| 40-3     | *    | B1253-781-000-A | BEARING RETAINER                    | 1         |
| 40-4     | *    | SS-7111120-SP   | SCREW 11/64-40 L=10.5               | 3         |
| 40-5     | *    | B1257-781-000   | MAIN SHAFT BUSHING REAR FELT B      | 1         |
| 41       |      | SS-8150710-SP   | SCREW 15/64-28 L=7                  | 1         |
| 42       |      | B3541-012-000   | OIL WICK                            | 1         |
| 43       | 002  | B1255-781-00B   | WASHER B                            | 2         |
| 44       | *    | B1252-781-OA0   | LOOSE PULLEY ASM.                   | D.01/83 - |
| 45       | *    | B1253-781-000   | BEARING RETAINER                    | D.01/83 - |
| 46       | *    | SS-8151150-SP   | SCREW 15/64-28 L=10.5               | D.01/83 - |
| 47       | *    | B1252-781-080   | LOOSE PULLEY ASM.                   | (1)       |
| 48       |      | RC-3000001-KP   | RETAINING RING 30                   | (1)       |
| 49       |      | SS-7090410-SP   | SCREW 9/64-40 L= 3,5                | 3         |
| 50       |      | B1254-781-000   | MAIN SHAFT THRUST SEEL              | 1         |
| 51       |      | B1227-771-000   | GASKET                              | 1         |
| 52       |      | B1220-771-000   | THRUST WASHER A                     | 2         |
| 53       |      | B1225-771-000   | BEARING                             | 1         |
| 54       |      | SS-7660510-SP   | SCREW 1/4-40 L=5,0                  | 1         |
| 55       |      | SS-8660512-TP   | SCREW 1/4-40 L=5                    | 1         |
| 56       |      | B1251-781-000   | DRIVING PULLEY                      | 1         |
| 57       | 002  | B1224-771-00C   | SCREW (C)                           | 1         |
| 58       |      | B1231-771-000   | STOP CAM PRESSURE SPRING            | 1         |
| 59       |      | B1210-232-000   | STOP-MOTION CAM PIN SLIDE BLOCK     | 2         |
| 60       |      | B1212-232-000   | BAKELITE SEGMENT                    | 1         |
| 61       |      | B1209-232-000   | STOP-MOTION CAM POSITION PIN        | 1         |
| 62       |      | B1208-771-000   | STOP MOTION CAM                     | 1         |
| 63       |      | B1212-771-000   | STOP MOTION CAM PRESSER PLATE       | 1         |
| 64       |      | SS-2110720-TP   | SCREW 11/64-40 L=8,5                | 3         |

Note 001 ..... Special order part  
002 ..... Selecting part

### 3. HOOK DRIVING SHAFT COMPONENTS

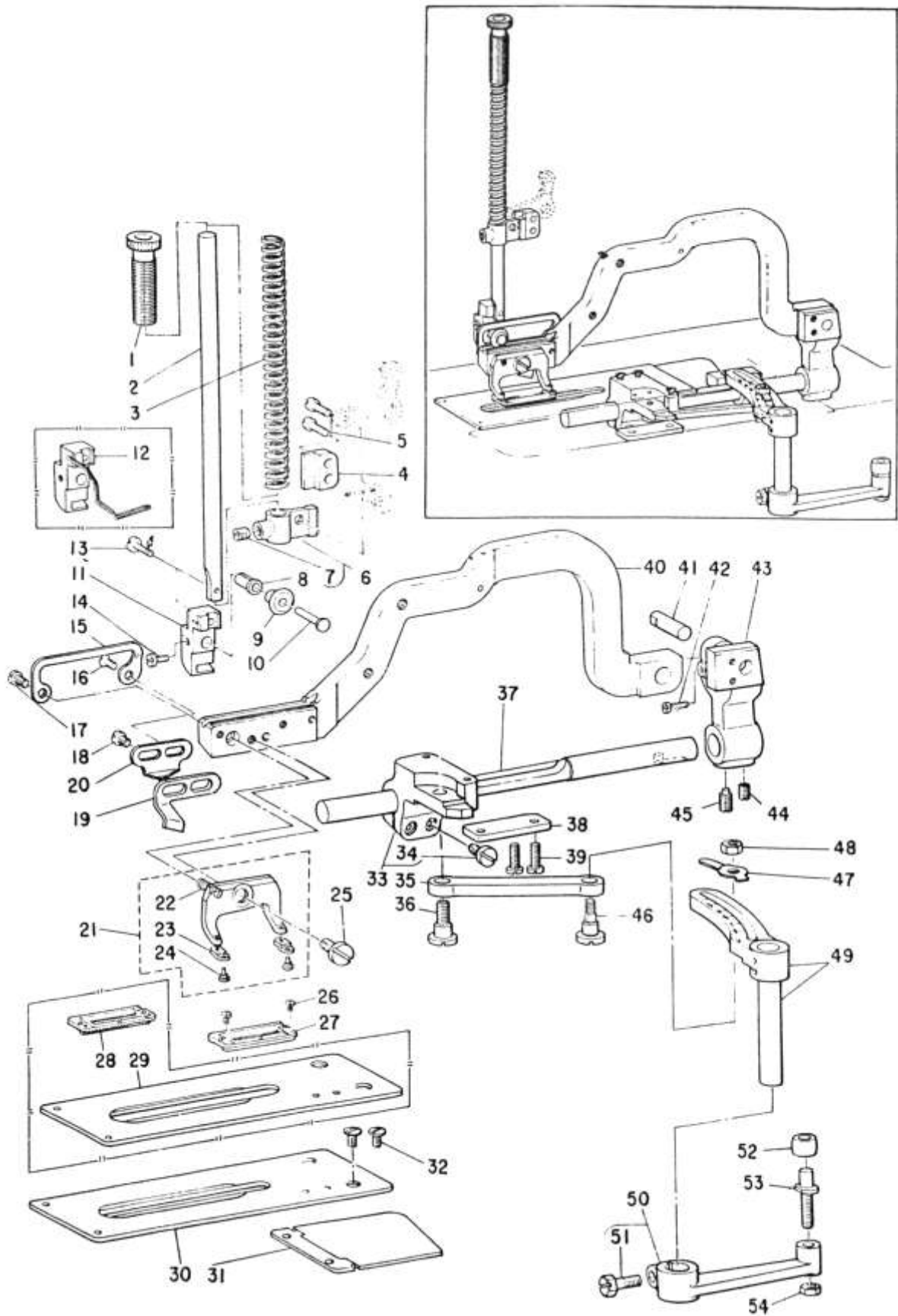




| Ref. No. | Note | Part No.        | Description                   | Amt. Req. |
|----------|------|-----------------|-------------------------------|-----------|
| 1        |      | B1810-771-0A0   | BOBBIN CASE ASM.              | 1         |
| 2        |      | B1810-761-C00   | BOBBIN CASE LATCH LEVER       | (1)       |
| 3        |      | B1810-761-800   | BOBBIN CASE LATCH             | (1)       |
| 4        |      | B1810-761-F00   | LATCH SPRING                  | (1)       |
| 5        |      | B1810-761-G00   | LATCH STOP SCREW              | (1)       |
| 6        |      | B1810-761-000   | HINGE PIN                     | (1)       |
| 7        |      | B1810-771-E00   | TENSION SPRING                | (1)       |
| 8        |      | B1810-761-J00   | TENSION SCREW                 | (1)       |
| 9        |      | B1810-761-H00   | CLAMP SCREW                   | (1)       |
| 10       |      | B1811-771-000   | BOBBIN                        | 1         |
| 11       |      | B1808-771-0AC   | HOOK C ASM.                   | 1         |
| 12       |      | B1807-771-000   | BOBBIN CASE POSITIONING PLATE | 1         |
| 13       |      | SS-7110510-SP   | SCREW 11/64-40 L=5            | 1         |
| 14       |      | B1805-771-080   | HOOK SLEEVE ASM.              | 1         |
| 15       |      | SS-8660612-TP   | SCREW 1/4-40 L= 6.0           | (4)       |
| 16       |      | B1812-771-0A0   | OIL WICK ASM.                 | 1         |
| 17       |      | NS-6090310-SP   | NUT 9/64-40                   | 1         |
| 18       |      | B1806-771-000   | OIL ADJUSTING SCREW           | 1         |
| 19       |      | B1804-761-0A0   | BUSHING ASM., FRONT           | 1         |
| 20       |      | CQ-2520000-00   | OIL WICK                      | (0,1)     |
| 21       |      | SS-8150710-SP   | SCREW 15/64-28 L=7            | 3         |
| 22       |      | B1803-761-000   | BUSHING, INTERMEDIATE         | 1         |
| 23       | 001  | B1446-761-CA0   | PINION ASM.                   | 1         |
| 24       |      | SS-8660610-TP   | SCREW 1/4-40 L=6              | (2)       |
| 25       |      | B1306-771-0C0   | GEAR & PINION ASM.            | 1         |
| 26       |      | B1306-771-080   | GEAR & PINION ASM., UPPER     | (1)       |
| 27       |      | B1305-771-0A0   | GEAR ASM.                     | (7)       |
| 28       |      | SS-6660712-TP   | SCREW 1/4-40 L=8              | (2)       |
| 29       |      | B1306-771-0A0   | PINION ASM.                   | (1)       |
| 30       |      | SS-6660712-TP   | SCREW 1/4-40 L=8              | (2)       |
| 31       |      | B1307-771-080   | GEAR & PINION ASM., LOWER     | (1)       |
| 32       |      | B1307-771-0A0   | GEAR ASM, LARGE               | (1)       |
| 33       |      | SS-6660712-TP   | SCREW 1/4-40 L=8              | (2)       |
| 34       |      | B1308-771-0A0   | PINION ASM.                   | (1)       |
| 35       |      | SS-6660712-TP   | SCREW 1/4-40 L=8              | (2)       |
| 36       |      | B1814-771-000   | WASHER                        | 1         |
| 37       |      | B1314-771-000   | THRUST WASHER                 | 1         |
| 38       |      | B1301-771-000   | UPRIGHT SHAFT                 | 1         |
| 39       |      | B1303-771-000   | BUSHING, UPPER                | 1         |
| 40       |      | B1315-771-000   | BUSHING, LOWER                | 1         |
| 41       |      | SS-6151220-SP   | SCREW 15/64-28 L=11.5         | 2         |
| 42       |      | B1814-771-000   | WASHER                        | 1         |
| 43       |      | B1802-771-0A0   | BUSHING ASM., REAR            | 1         |
| 44       |      | CQ-2020000-00   | OIL WICK                      | (0,1)     |
| 45       |      | TA-0850604-R0   | RUBBER PLUG                   | 1         |
| 46       |      | B3541-581-000   | OIL ADJUSTING RUBBER          | 1         |
| 47       |      | B3540-581-000   | BUSHING                       | 1         |
| 48       |      | B3527-112-000   | PLATE SPRING                  | 1         |
| 49       |      | B3535-581-000   | HOOK OIL ADJUSTING SCREW      | 1         |
| 50       |      | B3537-581-000   | POSITIONING SCREW             | 1         |
| 51       |      | B1811-761-000-A | OIL SUPPLY FELT HOLDER        | 1         |
| 52       |      | SS-4110715-SP   | SCREW 11/64-40 L=7            | 1         |
| 53       |      | B1812-761-000   | OIL SUPPLY FELT               | 1         |
| 54       |      | B1801-761-000   | HOOK DRIVING SHAFT            | 1         |
| 55       | 002  | B1810-771-08A   | BOBBIN CASE ASM.              | 1         |
| 56       | 002  | B1814-761-000   | SPRING                        | (1)       |

Note 001 ..... Selecting part  
002 ..... Special order part for synthetic thread

#### 4. PRESSER BAR, WORK CLAMP CARRIER COMPONENTS



| Ref. No. | Note | Part No.        | Description                         | Amt. Req. |
|----------|------|-----------------|-------------------------------------|-----------|
| 1        |      | B1509-012-000   | PRESSER SPRING REGULATOR            | 1         |
| 2        |      | B1501-771-000   | PRESSFR BAR                         | 1         |
| 3        |      | B1507-761-000   | PRESSER SPRING                      | 1         |
| 4        |      | B1506-761-000   | PRESSER BAR GUIDE BRACKET           | 1         |
| 5        |      | SS-7111310-SP   | SCREW 11/64-40 L=12.8               | 2         |
| 6        |      | B1505-761-0A0   | PRESSER BAR POSITION BRACKET ASM.   | 1         |
| 7        |      | SS-8660810-TP   | SCREW 1/4-40 L=8                    | (1)       |
| 8        |      | B1504-771-000   | COLLAR                              | 1         |
| 9        |      | B1515-771-000   | SLIDE ROLLER                        | 1         |
| 10       |      | B1503-771-000   | CONNECTING PIN                      | 1         |
| 11       |      | B1502-771-000-A | BRACKET                             | 1         |
| 12       | 001  | B1502-771-0A0-A | BRACKET ASM.                        | 1         |
| 13       |      | SS-4091520-SP   | SCREW 9/64-40 L=15                  | 1         |
| 14       |      | SS-7110710-SP   | SCREW 11/64-40 L=7                  | 1         |
| 15       |      | B1513-771-000   | WORK CLAMP BRACKET                  | 1         |
| 16       |      | SS-2110920-TP   | SCREW 11/64-40 L=8.5                | 1         |
| 17       |      | SS-7110840-SP   | SCREW 11/64-40 L= 7.8               | 1         |
| 18       |      | SS-7110840-SP   | SCREW 11/64-40 L= 7.8               | 1         |
| 19       |      | B2020-771-00A   | NEEDLE THREAD TRIMMER GUIDE (A)     | 1         |
| 20       |      | B2020-771-00B   | NEEDLE THREAD TRIMMER GUIDE (B)     | 1         |
| 21       | 002  | B1511-771-0B0   | WORK CLAMP CHECK HOLDER ASM.        | 1         |
| 22       |      | B1512-761-000   | WORK CLAMP CHECK HOLDER SPRING      | (1)       |
| 23       |      | B1509-761-000   | WORK CLAMP CHECK SPRING             | (2)       |
| 24       |      | B1510-771-00B   | WORK CLAMP CHECK SPRING SET PIN (B) | (2)       |
| 25       |      | SD-0790203-SP   | HINGE SCREW D= 7.94 H= 1.5          | 1         |
| 26       |      | SS-6060210-SP   | SCREW 3/32-56 L= 1.9                | 2         |
| 27       | 002  | B1552-781-000   | WORK CLAMP CHECK                    | 1         |
| 28       | 003  | B1508-771-A00   | WORK CLAMP CHECK, KNIT GOOD         | 1         |
| 29       | 003  | B1613-771-A00-A | WORK CLAMP CARRIER                  | 1         |
| 30       |      | B1613-771-000-B | WORK CLAMP CARRIER                  | 1         |
| 31       |      | B1607-763-0A0   | BRACKET COVER                       | 1         |
| 32       |      | SS-5110810-SP   | SCREW 11/64-40 L=8                  | 2         |
| 33       |      | B1611-771-0A0   | WORK CLAMP ARM BRACKET ASM.         | 1         |
| 34       |      | SS-6151440-SP   | SCREW 15/64-28 L=14                 | (2)       |
| 35       |      | B1606-763-000   | WORK CLAMP CARRIER BRACKET PITMAN   | 1         |
| 36       |      | SD-0870601-SP   | HINGE SCRFW D= 8.73 H= 6.0          | 1         |
| 37       |      | B1609-771-000   | WORK CLAMP ARM SLIDE ROD            | 1         |
| 38       |      | B1612-763-000   | WORK CLAMP CARRIER BRACKET GUIDE    | 1         |
| 39       |      | SS-6111010-SP   | SCREW 11/64-40 L= 9.5               | 2         |
| 40       |      | B1551-781-000   | WORK CLAMP                          | 1         |
| 41       |      | B1517-761-000   | CONNECTING PIN                      | 1         |
| 42       |      | SS-7090920-SP   | SCREW 9/64-40 L= 8.5                | 1         |
| 43       |      | B1516-771-000   | BEARING ARM                         | 1         |
| 44       |      | SS-8150710-SP   | SCREW 15/64-28 L=7                  | 1         |
| 45       |      | SS-8150920-SP   | SCREW 15/64-28 L=11.0               | 1         |
| 46       |      | B1605-761-000   | LENGTH REGULATING HINGE STUD        | 1         |
| 47       |      | B1608-771-000   | LENGTH REGULATING SHAFT GUIDE       | 1         |
| 48       |      | NS-6150310-SP   | NUT 15/64-28                        | 1         |
| 49       |      | B1603-763-0A0   | LENGTH REGULATING SCALE ASM.        | 1         |
| 50       |      | D1601-762-VA0   | BELL CRANK ASM.                     | 1         |
| 51       |      | SS-9151630-CP   | SCREW 15/64-28 L=15.5               | (1)       |
| 52       |      | B2502-232-000   | ROLLER                              | 1         |
| 53       |      | B1602-761-000   | BELL CRANK ROLLER STUD              | 1         |
| 54       |      | NS-6150310-SP   | NUT 15/64-28                        | 1         |

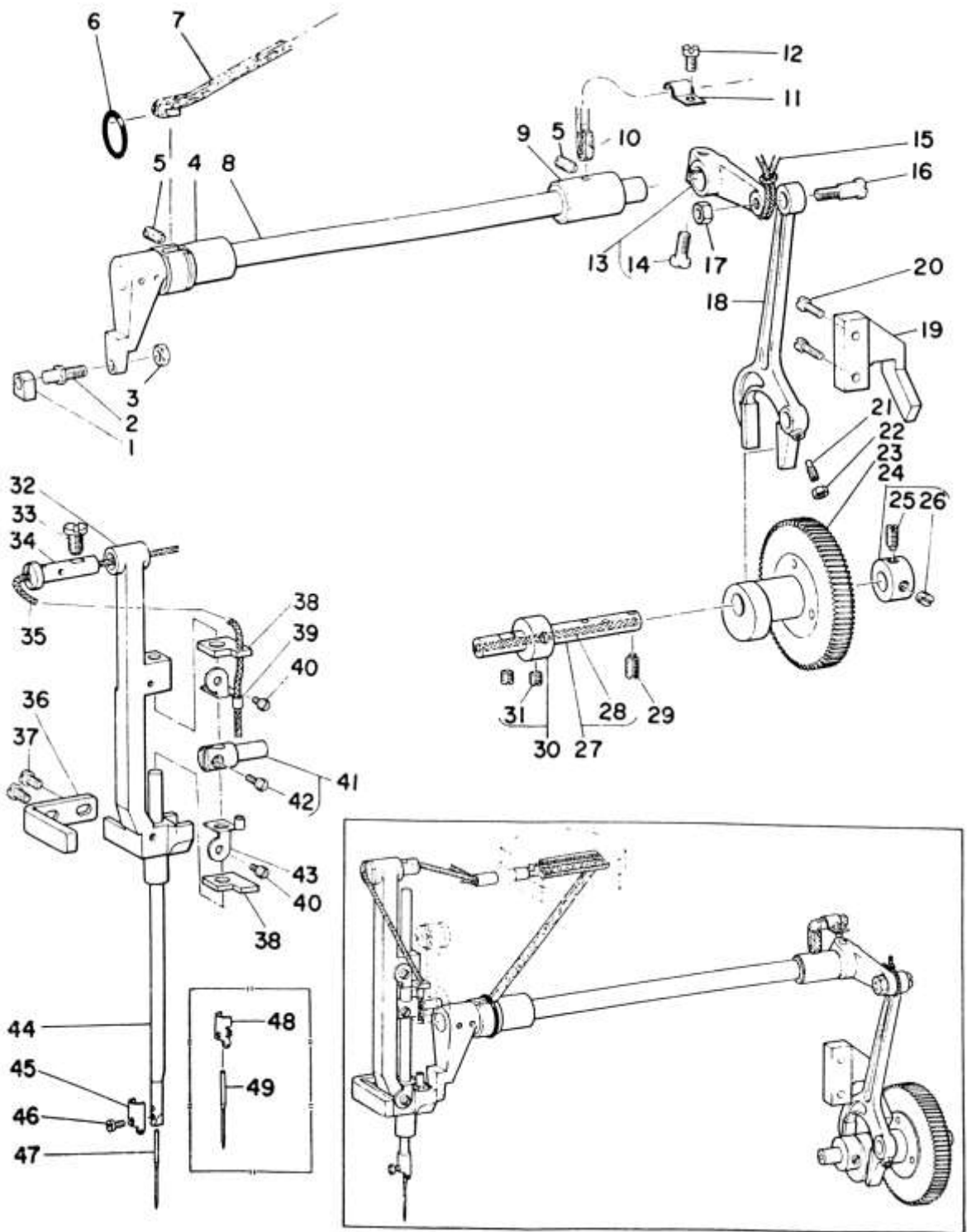
Note 001 ..... Special order part

002 ..... The size of the buttonhole varies according to the work clamp check, so for further details please refer to page 37 21-(2).

003 ..... Special order part for light weight knit materials. (Please use the work clamp check and the work clamp carrier together as a pair.)



### 5. NEEDLE BAR FRAME COMPONENTS

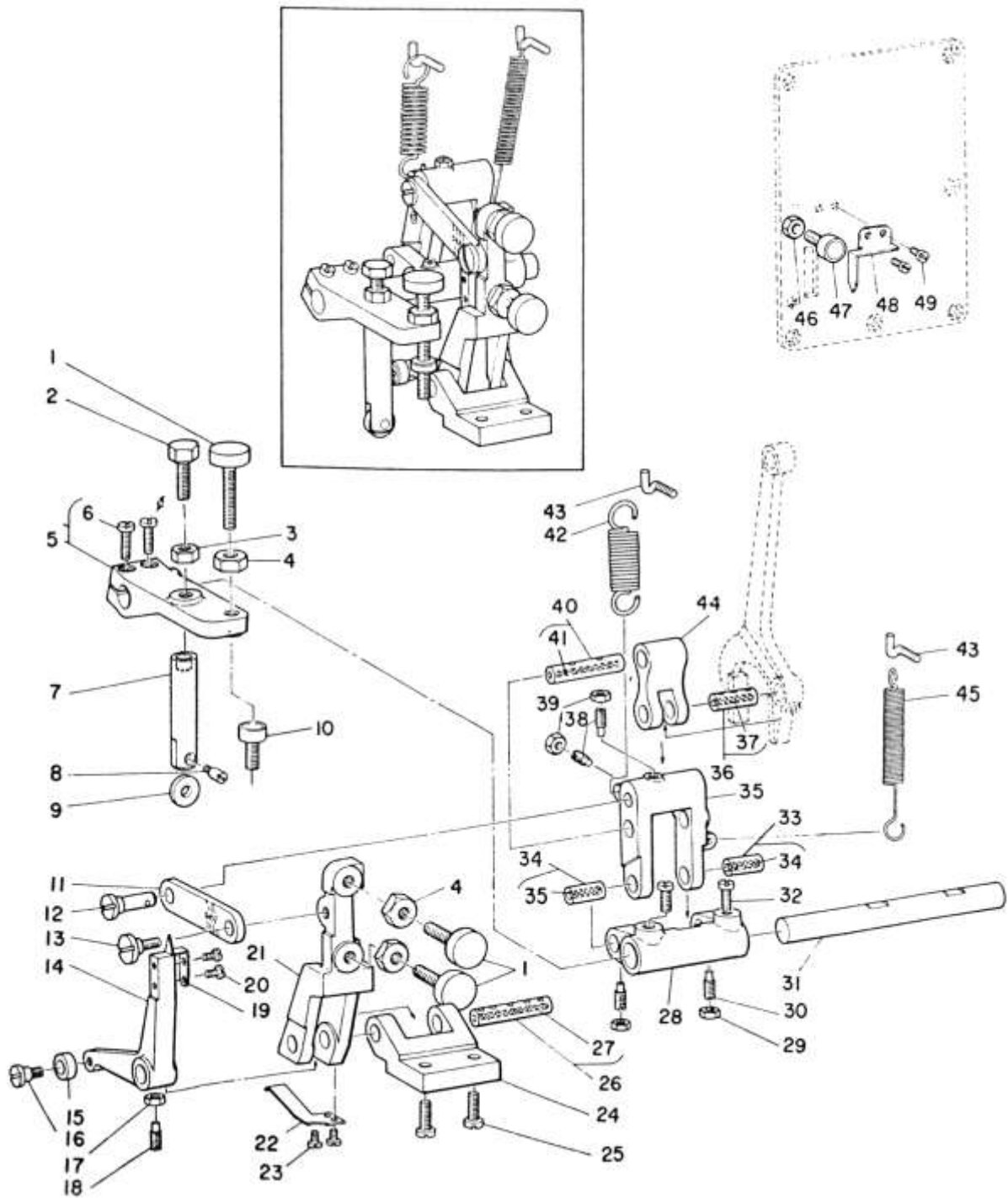


| Ref. No. | Note | Part No.      | Description                        | Amt. Req. |
|----------|------|---------------|------------------------------------|-----------|
| 1        |      | B1414-232-000 | NEEDLE BAR CONNECTION SLIDE BLOCK  | 1         |
| 2        |      | B1410-771-000 | STUD                               | 1         |
| 3        |      | NS-6150310-SP | NUT 15/64-28                       | 1         |
| 4        |      | B1452-771-000 | BUSHING                            | 1         |
| 5        |      | SS-8151150-SP | SCREW 15/64-28 L=10.5              | 2         |
| 6        |      | RO-1482402-00 | RUBBER RING                        | 1         |
| 7        |      | B3541-012-000 | OIL WICK                           | 1         |
| 8        |      | B1411-771-0A0 | FRAME ROCK SHAFT CRANK ASM., FRONT | 1         |
| 9        |      | B1413-771-000 | BUSHING, REAR                      | 1         |
| 10       |      | D1233-555-800 | OIL FELT                           | 1         |
| 11       | *    | B3538-112-000 | NEEDLE COOLER PIPE HOLDER          | -         |
| 12       | *    | SS-7110710-SP | SCREW 11/64-40 L=7                 | -         |
| 13       |      | B1414-771-0A0 | FRAME ROCK SHAFT CRANK ASM., REAR  | 1         |
| 14       |      | SS-7151210-SP | SCREW 15/64-28 L=12                | (1)       |
| 15       |      | CQ-2520000-00 | OIL WICK                           | 0.1       |
| 16       |      | SD-0790801-SP | HINGE SCREW D=7.94 H=8             | 1         |
| 17       |      | NS-6160520-SP | NUT 1/4-24                         | 1         |
| 18       |      | B1415-761-000 | NEEDLE BAR PITMAN                  | 1         |
| 19       |      | B1416-761-000 | ROCK SHAFT CONNECTION GUIDE        | 1         |
| 20       |      | SS-6111620-SP | SCREW 11/64-40 L=16.0              | 2         |
| 21       |      | SS-8111251-SP | SCREW 11/64-40 L=12.0              | 1         |
| 22       |      | NS-6110310-SP | NUT 11/64-40                       | 1         |
| 23       |      | B1445-761-0A0 | NEEDLE DRIVING GEAR ASM.           | 1         |
| 24       |      | CS-095101C-SH | THRUST COLLAR ASM. D=9.53 W=10     | 1         |
| 25       |      | SS-8150920-SP | SCREW 15/64-28 L=11.0              | (1)       |
| 26       |      | SS-8150710-SP | SCREW 15/64-28 L=7                 | (1)       |
| 27       |      | B1447-761-0A0 | KNIFE DRIVING SHAFT ASM.           | 1         |
| 28       |      | CQ-2020000-00 | OIL WICK                           | (0.2)     |
| 29       |      | SS-8150920-SP | SCREW 15/64-28 L=11.0              | 1         |
| 30       |      | CS-095101B-SH | THRUST COLLAR ASM. D=9.53 W=10     | 1         |
| 31       |      | SS-8150710-SP | SCREW 15/64-28 L=7                 | (2)       |
| 32       |      | B1403-771-000 | NEEDLE BAR FRAME                   | 1         |
| 33       |      | SS-7151120-SP | SCREW 15/64-28 L=11                | 1         |
| 34       |      | B1404-771-000 | HINGE STUD                         | 1         |
| 35       |      | CQ-2520000-00 | OIL WICK                           | 0.5       |
| 36       |      | B1405-771-000 | POSITION BRACKET                   | 1         |
| 37       |      | SS-5110810-SP | SCREW 11/64-40 L=8                 | 2         |
| 38       |      | B1416-761-000 | ROCK SHAFT CONNECTION GUIDE        | 2         |
| 39       |      | B1407-761-000 | OIL FELT                           | 1         |
| 40       |      | SS-7090520-SP | SCREW 9/64-40 L=4.5                | 2         |
| 41       |      | B1402-761-0A0 | NEEDLE BAR CONNECTION              | 1         |
| 42       |      | SS-7090910-TP | SCREW 9/64-40 L=8.5                | (1)       |
| 43       |      | B1408-761-000 | OIL FELT RETAINER, LOWER           | 1         |
| 44       |      | B1401-761-000 | NEEDLE BAR                         | 1         |
| 45       |      | B1451-761-000 | NEEDLE BAR BOBBIN THREAD GUIDE     | 1         |
| 46       |      | SS-7080510-TP | SCREW 1/8-44 L=4.5                 | 1         |
| 47       |      | MOP-5J0B1100  | NEEDLE DPX5 #11J                   | 1         |
| 48       | 001  | B1451-771-00A | NEEDLE BAR THREAD GUIDE            | 1         |
| 49       | 002  | MC-2005E07-50 | NEEDLE 134SES 75                   | 1         |

Note            001 ..... Special order part for synthetic thread

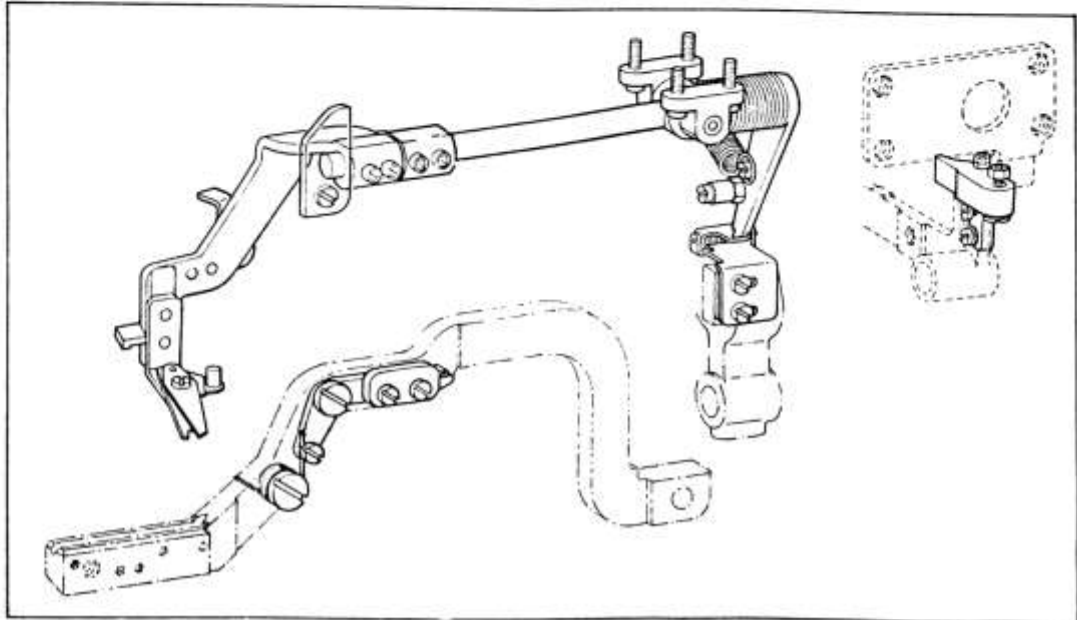
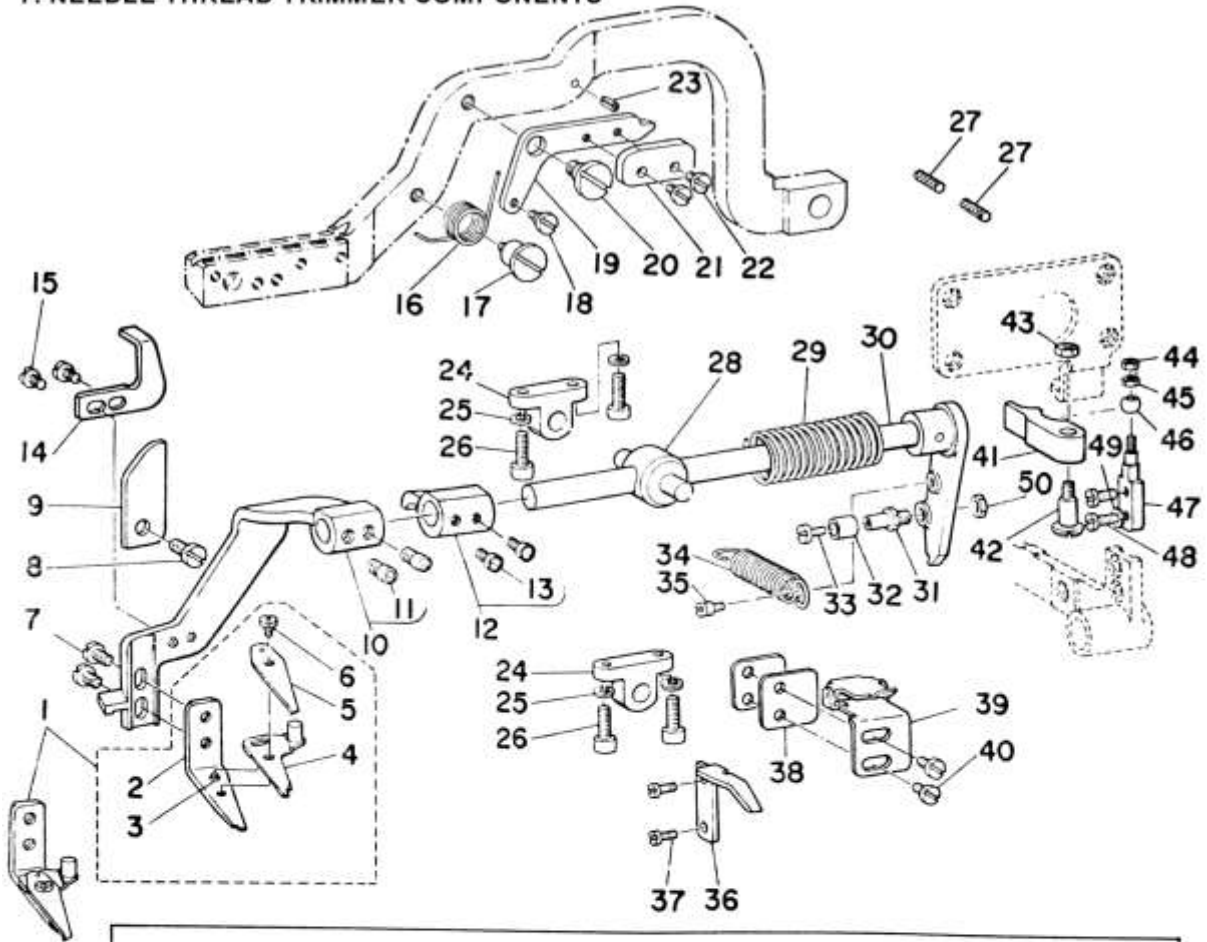
                  002 ..... Special order part

## 6. OVEREDGING WIDTH ADJUSTING COMPONENTS



| Ref. No. | Note | Part No.      | Description                      | Amt. Req. |
|----------|------|---------------|----------------------------------|-----------|
| 1        |      | B1449-761-000 | STITCH WIDTH REGULATING SCREW    | 3         |
| 2        |      | SS-9201973-CP | SCREW 5/16-18 L=19               | 1         |
| 3        |      | NS-6200520-SP | NUT 5/16-18                      | 1         |
| 4        |      | NS-6200710-SN | NUT 5/16-18                      | 3         |
| 5        |      | B1423-771-0A0 | REPOSITIONING LEVER ASM.         | 1         |
| 6        |      | SS-6121210-SP | SCREW 3/16-28 L=12               | (2)       |
| 7        |      | B1429-771-0B0 | TRIPPING ROD ASM.                | 1         |
| 8        |      | B1431-761-000 | PIN                              | 1         |
| 9        |      | B1430-761-000 | ROLLER                           | 1         |
| 10       |      | B1453-761-0A0 | REGULATING LEVER STOPPER ASM.    | 1         |
| 11       |      | B1434-771-000 | REGULATING LEVER CONNECTION      | 1         |
| 12       |      | B1433-761-000 | REGULATING HINGE PIN             | 1         |
| 13       |      | SD-0790432-SP | HINGE SCREW D= 7.94 H= 4.3       | 1         |
| 14       |      | B1436-761-000 | BELL CRANK                       | 1         |
| 15       |      | B1439-761-000 | ROLLER                           | 1         |
| 16       |      | SD-0640471-SP | HINGE SCREW D= 6.35 H= 4.7       | 1         |
| 17       |      | NS-6110310-SP | NUT 11/64-40                     | 1         |
| 18       |      | SS-8111251-SP | SCREW 11/64-40 L=12.0            | 1         |
| 19       |      | B1443-771-000 | BARRED WIDTH INDICATOR           | 1         |
| 20       |      | SS-7080510-TP | SCREW 1/8-44 L=4.5               | 2         |
| 21       |      | B1435-771-000 | REGULATING LEVER                 | 1         |
| 22       |      | B1448-761-000 | SPRING                           | 1         |
| 23       |      | SS-7080510-TP | SCREW 1/8-44 L=4.5               | 2         |
| 24       |      | B1437-761-000 | REGULATING LEVER BRACKET         | 1         |
| 25       |      | SS-7151210-SP | SCREW 15/64-28 L=12              | 2         |
| 26       |      | B1438-761-0A0 | REGULATING LEVER SHAFT ASM.      | 1         |
| 27       |      | CQ-2520000-00 | OIL WICK                         | (0,1)     |
| 28       |      | B1425-771-000 | BEARING BRACKET                  | 1         |
| 29       |      | NS-6110310-SP | NUT 11/64-40                     | 2         |
| 30       |      | SS-8111251-SP | SCREW 11/64-40 L=12.0            | 2         |
| 31       |      | B1424-761-000 | NEEDLE THROW REPOSITICNING SHAFT | 1         |
| 32       |      | SS-7150940-SP | SCREW 15/64-28 L=9               | 2         |
| 33       |      | B1421-761-0A0 | BEARING BRACKET ASM.             | 2         |
| 34       |      | CQ-2520000-00 | OIL WICK                         | (0,1)     |
| 35       |      | B1420-771-000 | REPOSITIONING LIVER LINK         | 1         |
| 36       |      | B1418-761-0A0 | CONNECTING FORKED LINK PIN ASM.  | 1         |
| 37       |      | CQ-2520000-00 | OIL WICK                         | (0,1)     |
| 38       |      | SS-8111251-SP | SCREW 11/64-40 L=12.0            | 2         |
| 39       |      | NS-6110310-SP | NUT 11/64-40                     | 2         |
| 40       |      | B1419-761-0A0 | CONNECTING STIID AS'L,           | 1         |
| 41       |      | CQ-2520000-00 | OIL WICK                         | (0,1)     |
| 42       |      | B1426-771-000 | SPRING                           | 1         |
| 43       |      | B1422-761-000 | SUSPENSION SCREW                 | 2         |
| 44       |      | B1417-761-000 | CONNECTING FOPKED LINK           | 1         |
| 45       |      | B1427-771-000 | SPRING                           | 1         |
| 46       |      | NS-6150310-SP | NUT 15/64-28                     | 1         |
| 47       |      | B1453-761-0A0 | REGULATING LEVER STOPPER ASM.    | 1         |
| 48       |      | B1441-771-000 | SEAM WIDTH INDICATOR             | 1         |
| 49       |      | SS-7080510-TP | SCREW 1/8-44 L=4.5               | 2         |

## 7. NEEDLE THREAD TRIMMER COMPONENTS

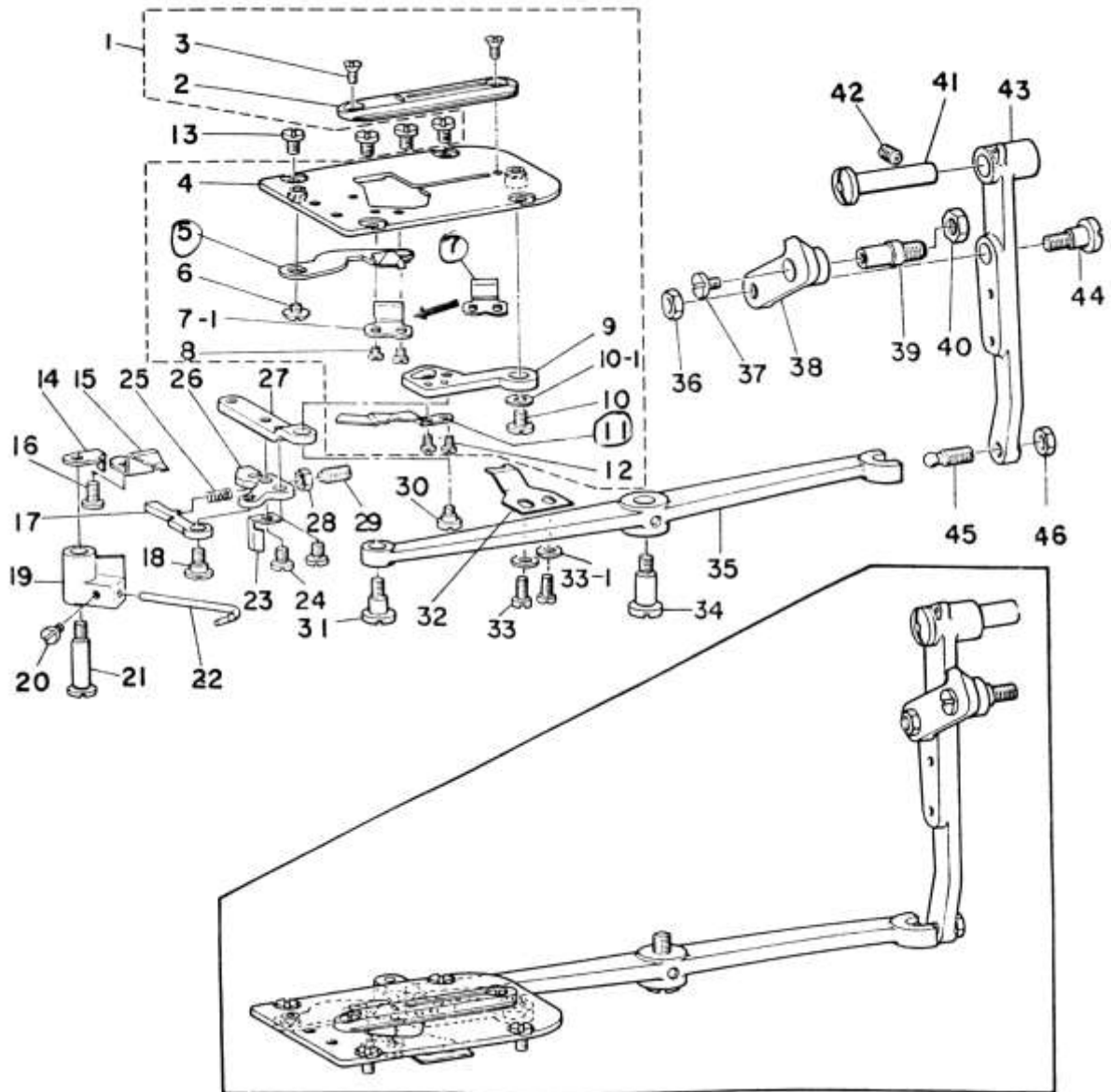




| Ref. No. | Note | Part No.      | Description                       | E. C.   | Amt. Req. |
|----------|------|---------------|-----------------------------------|---------|-----------|
| 1        |      | B2001-771-0A0 | NEEDLE THREAD TRIMMER ASM.        |         | 1         |
| 2        |      | B2001-771-000 | NEEDLE THREAD TRIMMER, LOWER      |         | (1)       |
| 3        |      | B2005-761-000 | POSITION PIN                      |         | (1)       |
| 4        |      | B2002-771-0A0 | NEEDLE THREAD TRIMMER, UPPER      |         | (1)       |
| 5        |      | B2003-771-000 | NEEDLE THREAD PRESSER SPRING      |         | (1)       |
| 6        |      | SD-0400191-TP | HINGE SCREW D=4 H=1,8             |         | (1)       |
| 7        |      | SS-7110510-SP | SCREW 11/64-40 L=5                |         | 2         |
| 8        |      | B2008-771-000 | NEEDLE THREAD TRIMMER SHAFT GUIDE |         | 1         |
| 9        |      | SS-7150740-SP | SCREW 15/64-28 L=7                |         | 1         |
| 10       |      | B2063-781-0B0 | THREAD TRIMMER HOLDER ASM.        |         | 1         |
| 11       |      | SS-6660712-TP | SCREW 1/4-40 L=7,0                |         | (2)       |
| 12       |      | B2051-781-0B0 | THREAD TRIMMER HOLDER ASM.        |         | 1         |
| 13       |      | SS-6660712-TP | SCREW 1/4-40 L=7,0                |         | (2)       |
| 14       |      | B2058-781-000 | LIMITING PLATE                    |         | 1         |
| 15       |      | SS-7110840-SP | SCREW 11/64-40 L=7,8              |         | 2         |
| 16       |      | B2061-781-000 | DRIVING CAM SPRING                |         | 1         |
| 17       |      | B2062-781-000 | DRIVING CAM SPRING AXLE           |         | 1         |
| 18       |      | SD-0450401-SP | HINGE SCREW D= 4.5 H= 4           |         | 1         |
| 19       |      | B2059-781-000 | DRIVING CAM INSTALLING PLATE      |         | 1         |
| 20       |      | SD-0790303-SP | HINGE SCREW D= 7.94 H= 3.0        |         | 1         |
| 21       |      | B2060-781-000 | DRIVING CAM                       |         | 1         |
| 22       |      | SS-7090710-SP | SCREW 9/64-40 L= 6,8              |         | 2         |
| 23       |      | PS-0300102-K0 | SPRING PIN 3.0X10                 |         | 1         |
| 24       |      | B2010-771-000 | BRACKET                           |         | 2         |
| 25       |      | WS-0521010-KN | SPRING WASHER 5,2X8,2X1           |         | 4         |
| 26       |      | SS-6621212-TP | SCREW 3/16-32 L=12,0              |         | 4         |
| 27       | *    | CQ-2020000-00 | OIL WICK                          | 0.01/83 | -         |
| 28       |      | B2009-771-000 | UNIVERSAL JOINT                   |         | 1         |
| 29       |      | B2053-781-000 | THREAD TRIMMER SPRING B           |         | 1         |
| 30       |      | B2007-771-0B0 | NEEDLE THREAD TRIMMER SHAFT ASM.  |         | 1         |
| 31       |      | B2014-771-000 | STUD                              |         | 1         |
| 32       |      | B2507-372-000 | CAM ROLL                          |         | 1         |
| 33       |      | SS-6080610-TP | SCREW 1/8-44 L=6                  |         | 1         |
| 34       |      | B2052-781-000 | THREAD TRIMMER SPRING A           |         | 1         |
| 35       |      | B2024-771-000 | SUSPENSION SCREW                  |         | 1         |
| 36       |      | B2027-771-000 | LATCH PRESSER ARM                 |         | 1         |
| 37       |      | SS-7090710-SP | SCREW 9/64-40 L= 6,8              |         | 2         |
| 38       | #01  | B2023-761-000 | SPACER                            |         | 2         |
| 39       |      | B2017-771-0A0 | LOCKING BRACKET LATCH ASM.        |         | 1         |
| 40       |      | SS-7110840-SP | SCREW 11/64-40 L=7,8              |         | 2         |
| 41       |      | B2030-771-000 | THREAD TRIMMING SHAFT SEGMENT     |         | 1         |
| 42       |      | SD-0641003-SP | HINGE SCREW D=6,35 H=10           |         | 1         |
| 43       |      | NS-6110310-SP | NUT 11/64-40                      |         | 1         |
| 44       |      | NS-6080210-SP | NUT 1/8-44                        |         | 1         |
| 45       |      | NS-6080340-SP | NUT 1/8-44                        |         | 1         |
| 46       |      | B2031-771-000 | ROLLER                            |         | 1         |
| 47       |      | B2032-771-000 | STUD                              |         | 1         |
| 48       |      | SS-7110840-SP | SCREW 11/64-40 L=7,8              |         | 2         |
| 49       |      | WP-0480856-SP | WASHER 4,8X8,4X0,8                |         | 1         |
| 50       |      | NS-6150310-SP | NUT 15/64-28                      |         | 1         |

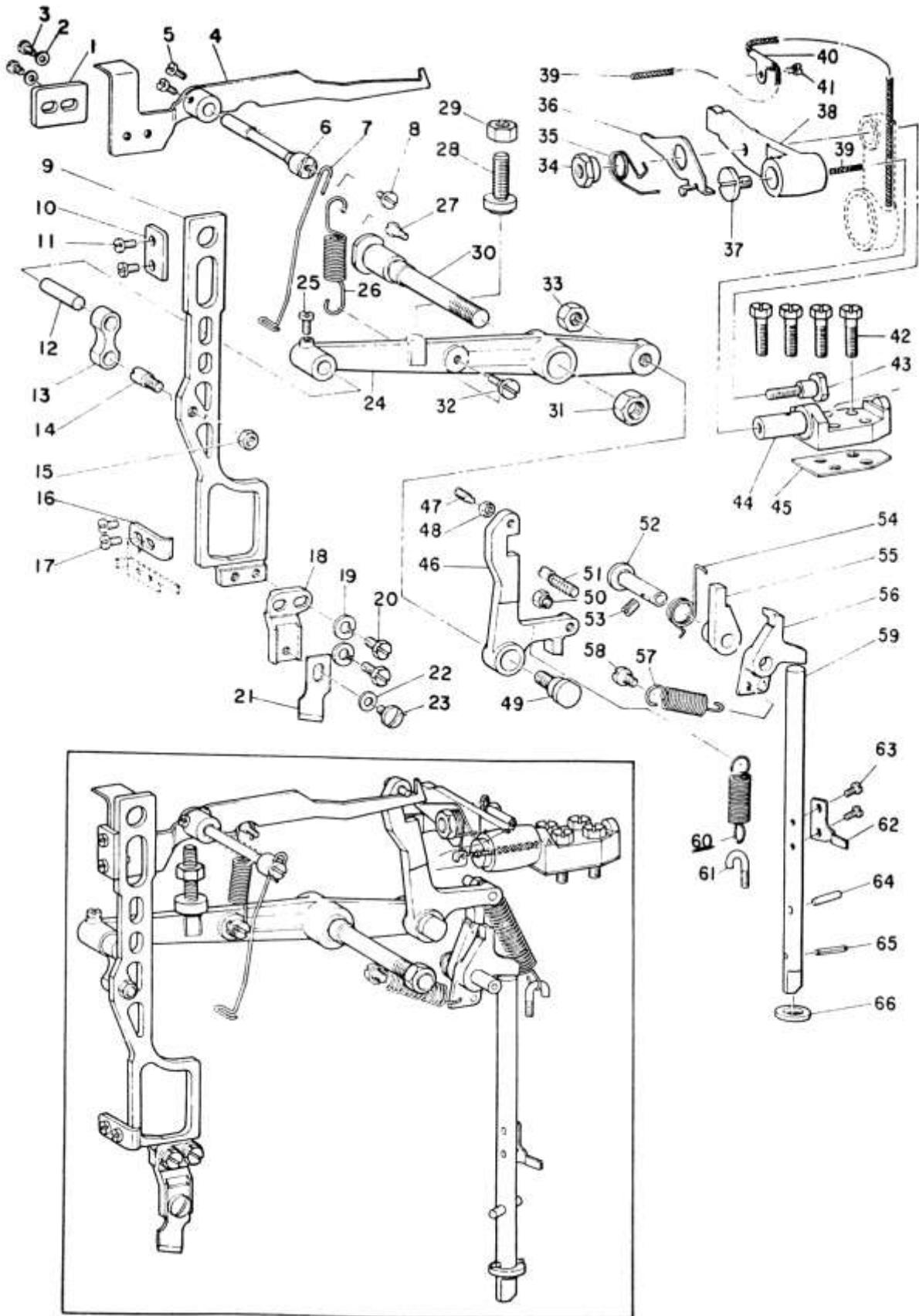
Note #01 ..... Depending on the machine frame. 0 ~ 2 sets of this part will be used.

## 8. BOBBIN THREAD TRIMMER COMPONENTS



| Ref. No. | Note | Part No.        | Description                         | Amt. Req. |
|----------|------|-----------------|-------------------------------------|-----------|
| 1        |      | B2401-771-0A0   | NEEDLE PLATE ASM.                   | 1         |
| 2        |      | B2402-771-000   | NEEDLE PLATE                        | (1)       |
| 3        |      | SS-2090510-SP   | SCREW 9/64-40 L=5                   | (2)       |
| 4        |      | B2401-771-0B0   | THROAT PLATE BASE ASM.              | (1)       |
| 5        |      | B2406-771-0A0   | BOBBIN THREAD TRIMMER BLADE ASM.    | (1)       |
| 6        |      | SS-5090320-SP   | SCREW 9/64-40 L= 3.2                | (1)       |
| 7        |      | B2408-771-000   | COUNTER KNIFE                       | -         |
| 7-1      |      | B2408-771-000-A | COUNTER KNIFE                       | (1)       |
| 8        |      | SS-4080310-SP   | SCREW 1/8-44 L=3.4                  | (2)       |
| 9        |      | B2404-771-000   | BOBBIN THREAD TRIMMER LEVER         | (1)       |
| 10       |      | SS-7110570-SP   | SCREW 11/64-40 L= 4.8               | (1)       |
| 10-1     |      | WP-0451016-SP   | WASHER 4.5X20X1                     | (1)       |
| 11       |      | B2405-771-000   | BOBBIN THREAD PULLER                | (1)       |
| 12       |      | SS-6090440-SP   | SCREW 9/64-40 L= 4.0                | (2)       |
| 13       |      | SS-6090630-SP   | SCREW 9/64-40 L=6                   | 4         |
| 14       |      | B2424-771-000-A | HOOK THREAD PRESSER STOPPER         | 1         |
| 15       |      | B2416-771-000   | PRESSER PLATE                       | 1         |
| 16       |      | SS-7110840-SP   | SCREW 11/64-40 L= 7.8               | 1         |
| 17       |      | B2426-771-000   | BOBBIN PICKER PRESSER PLATE         | 1         |
| 18       |      | SD-0630272-SP   | HINGE SCREW                         | 1         |
| 19       |      | B2422-771-000   | BOBBIN PICKER BRACKET               | 1         |
| 20       |      | SS-7090620-TP   | SCREW 9/64-40 L= 6.1                | 1         |
| 21       |      | B2423-771-000   | BOBBIN PICKER BRACKET SHAFT         | 1         |
| 22       |      | B2421-771-000   | BOBBIN WINDER TRIP LATCH            | 1         |
| 23       |      | B2429-771-000   | SAFETY STOPPER                      | 1         |
| 24       |      | SS-6110610-TP   | SCREW 11/64-40 L=6                  | 2         |
| 25       |      | B2428-771-000   | PRESSER PLATE ADJUSTING SPPING      | 1         |
| 26       |      | B2425-771-000   | PRESSER PLATE MOUNTING BASE         | 1         |
| 27       |      | B2420-771-000   | BOBBIN THREAD TRIMMER LINK          | 1         |
| 28       |      | NS-6120310-SP   | NUT 3/16-28                         | 1         |
| 29       |      | B2427-771-000-A | PRESSER PLATE ADJUSTING SCREW       | 1         |
| 30       |      | SD-0640321-SP   | HINGE SCREW D= 6.35 H= 3.7          | 1         |
| 31       |      | SD-0640602-SP   | HINGE SCREW D= 6.35 H= 6.0          | 1         |
| 32       |      | B2417-771-000   | BOBBIN THREAD GUIDE                 | 1         |
| 33       |      | SS-6090510-SP   | SCREW 9/64-40 L=6                   | 2         |
| 33-1     |      | WP-0450000-SD   | SCREW                               | 2         |
| 34       |      | SD-0791271-SP   | HINGE SCREW D= 7.94 H=12.7          | 1         |
| 35       |      | B2412-771-000   | BOBBIN THREAD TRIMMER DRIVING LEVER | 1         |
| 36       |      | NS-6150310-SP   | NUT 15/64-28                        | 1         |
| 37       |      | SS-7110570-SP   | SCREW 11/64-40 L= 4.8               | 1         |
| 38       |      | B2413-771-000   | CONNECTING LINK                     | 1         |
| 39       |      | B2414-761-000   | STOP SCREW                          | 1         |
| 40       |      | NS-6680320-SP   | NUT 9/32-28                         | 1         |
| 41       |      | B2416-761-000   | HING STUD                           | 1         |
| 42       |      | SS-8150710-SP   | SCREW 15/64-28 L=7                  | 1         |
| 43       |      | B2411-771-000   | BOBBIN THREAD TRIMMER DRIVING ARM   | 1         |
| 44       |      | SD-0790641-SP   | HINGE SCREW D= 7.94 H= 6.4          | 1         |
| 45       |      | B2412-047-000   | BALL SCREW                          | 1         |
| 46       |      | NS-6150310-SP   | NUT 15/64-28                        | 1         |

### 9. KNIFE BAR COMPONENTS



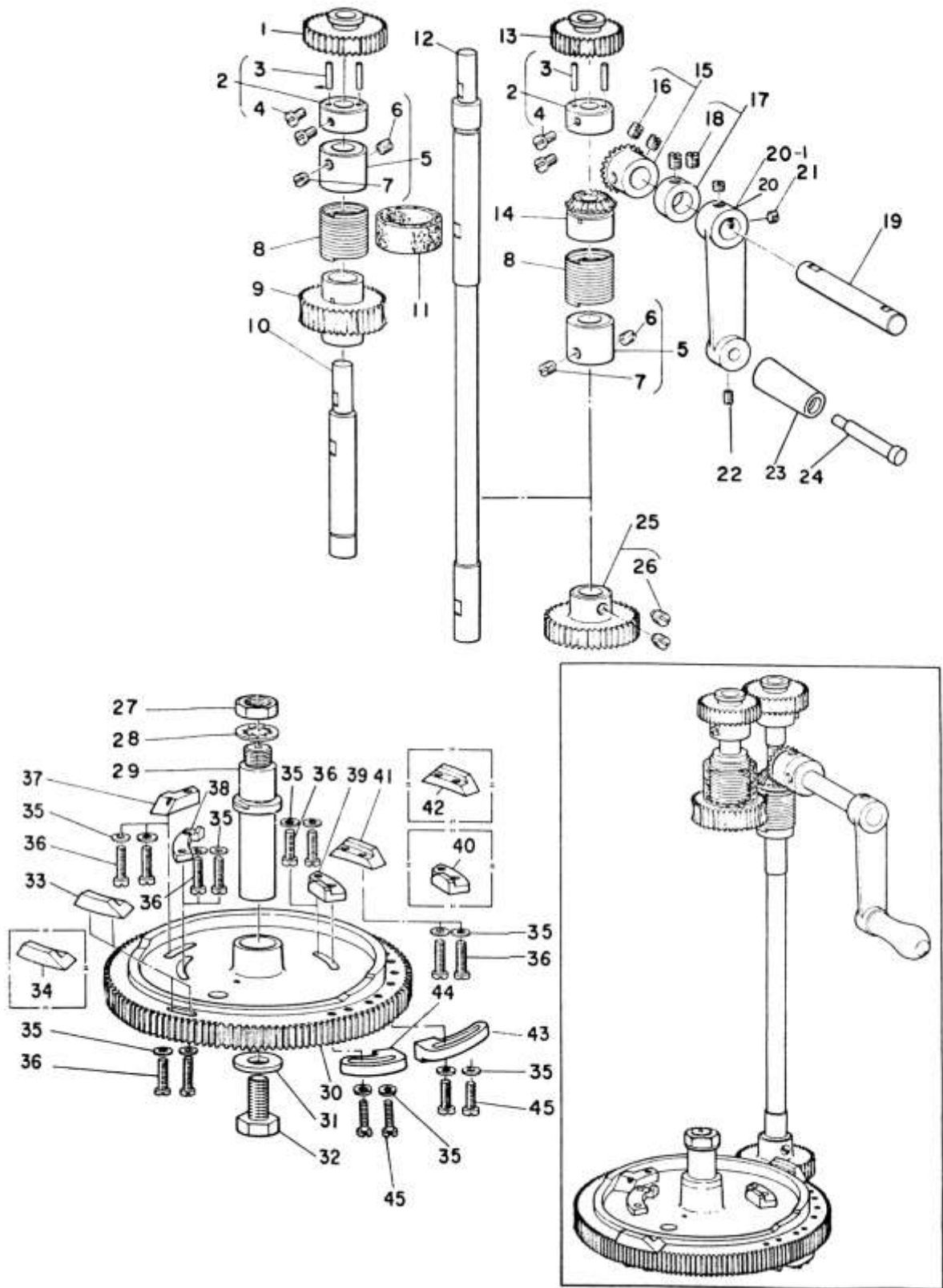
| Ref. No. | Note | Part No.      | Description                        | Amt. Req. |
|----------|------|---------------|------------------------------------|-----------|
| 1        |      | B2732-761-000 | KNIFE STOP LEVER BRACKET           | 1         |
| 2        |      | WP-0480856-SP | WASHER 4,8X8,4X0,8                 | 2         |
| 3        |      | SS-7110740-TP | SCREW 11/64-40 L=7                 | 2         |
| 4        |      | B2729-771-000 | KNIFE STOP LEVER                   | 1         |
| 5        |      | SS-6110420-TP | SCREW 11/64-40 L=4                 | 2         |
| 6        |      | B2730-761-000 | KNIFE STOP LEVER HINGE STUD        | 1         |
| 7        |      | B2731-761-000 | THREAD CHECK WIRE                  | 1         |
| 8        |      | SS-7110840-SP | SCREW 11/64-40 L= 7,8              | 1         |
| 9        |      | B2702-771-000 | KNIFE BAR                          | 1         |
| 10       | 002  | B2703-761-A00 | KNIFE BAR GUIDE BRACKET            | 1         |
| 11       |      | SS-7110710-SP | SCREW 11/64-40 L=7                 | 2         |
| 12       |      | B2707-761-000 | HINGE STUD                         | 1         |
| 13       |      | B2706-761-000 | KNIFE BAR CONNECTING LINK          | 1         |
| 14       |      | B2705-761-000 | HINGE SCREW                        | 1         |
| 15       |      | NS-6660430-SP | NUT 1/4-40                         | 1         |
| 16       | 002  | B2704-761-0B0 | KNIFE BAR POSITION BRACKET         | 1         |
| 17       |      | SS-7110840-SP | SCREW 11/64-40 L= 7,5              | 2         |
| 18       |      | B2701-761-000 | KNIFE HOLDER                       | 1         |
| 19       |      | WS-0651310-KP | SPRING WASHER 6,5X11X1,3           | 2         |
| 20       |      | SS-9661230-CP | SCREW 1/4-40 L=12                  | 2         |
| 21       | 001  | B2702-047-L00 | KNIFE 1/2"                         | 1         |
| 22       |      | WP-0501016-SD | WASHER 5X10,5X1                    | 1         |
| 23       |      | SS-7620750-SP | SCREW 3/16-32 L= 6,5               | 1         |
| 24       |      | B2751-781-000 | KNIFE BAR DRIVING LEVER            | 1         |
| 25       |      | SS-7110810-SP | SCREW 11/64-40 L= 8,0              | 1         |
| 26       |      | B2710-771-000 | SPRING                             | 1         |
| 27       |      | SD-0550501-SP | HINGE SCREW D=5,5 H=5              | 1         |
| 28       |      | B2752-731-0A0 | KNIFE BAR DRIVING LEVER ASM.       | 1         |
| 29       |      | NS-6200520-SP | NUT 5/16-18                        | 1         |
| 30       |      | B2709-771-000 | KNIFE BAR DRIVING LEVER SHAFT      | 1         |
| 31       |      | NS-6740510-SP | NUT 3/8-28                         | 1         |
| 32       |      | SD-0790201-SD | HINGE SCREW D=7,9 H=2,0            | 1         |
| 33       |      | NS-6700540-SP | NUT 5/16-24                        | 1         |
| 34       |      | B2719-761-000 | KNIFE BAR DRIVING CRANK NUT        | 1         |
| 35       |      | B2718-761-000 | TENSION SPRING                     | 1         |
| 36       |      | B2717-761-000 | LATCH                              | 1         |
| 37       |      | SS-7161040-SP | SCREW 1/4-24 L= 9,5                | 1         |
| 38       |      | B2715-761-000 | KNIFE BAR DRIVING CRANK            | 1         |
| 39       |      | CQ-2520000-00 | OIL WICK                           | 0,4       |
| 40       |      | B3537-122-000 | OIL WICK HOLDER                    | 1         |
| 41       |      | SS-4090610-SP | SCREW 9/64-40 L=6                  | 1         |
| 42       |      | SS-9152130-CP | SCREW 15/64-28 L=20,5              | 4         |
| 43       |      | SD-1110905-TH | HINGE SCREW D=11,11 H= 9,0         | 1         |
| 44       |      | B2716-771-000 | KNIFE BAR DRIVING CRANK SHAFT      | 1         |
| 45       |      | B2738-761-000 | SPACER                             | 1         |
| 46       |      | B2712-761-000 | KNIFE BAR DRIVING LEVER BELL CRANK | 1         |
| 47       |      | SS-8111610-SP | SCREW 11/64-40 L=15,5              | 1         |
| 48       |      | NS-6110310-SP | NUT 11/64-40                       | 1         |
| 49       |      | SD-1110705-TH | HINGE SCREW D=11,11 H= 9,0         | 1         |
| 50       |      | B2746-771-000 | NUT                                | 1         |
| 51       |      | B2713-771-000 | PIN                                | 1         |
| 52       |      | B2416-761-000 | HINGE STUD                         | 1         |
| 53       |      | SS-8150710-SP | SCREW 15/64-28 L=7                 | 1         |
| 54       |      | B2725-761-000 | TENSION SPRING                     | 1         |
| 55       |      | B2724-761-000 | RATCHET PAWL (B)                   | 1         |
| 56       |      | B2723-761-000 | RATCHET PAWL(A)                    | 1         |
| 57       |      | B2726-761-000 | TENSION SPRING                     | 1         |
| 58       |      | SD-0530221-SD | HINGE SCREW D= 5,30 H= 2,2         | 1         |
| 59       |      | B2728-771-000 | DRIVING ROD                        | 1         |
| 60       |      | B2727-761-000 | TENSION SPRING                     | 1         |
| 61       |      | B2633-232-000 | SUSPENSION SCREW                   | 1         |
| 62       |      | B2737-771-000 | FINGER                             | 1         |
| 63       |      | SS-7090710-SP | SCREW 9/64-40 L= 6,8               | 2         |
| 64       |      | B2735-761-000 | POSITIONING PIN (B)                | 1         |
| 65       |      | PS-0300182-KP | SPRING PIN 3X18                    | 1         |
| 66       |      | B2740-771-000 | THRUST WASHER                      | 1         |

Note                    001 ..... The size of the buttonhole varies according to the knife, so for further details please refer to page 37.21-(2).

                             002 ..... Selecting part



### 10. FEED CAM & TRIPPING SEGMENT COMPONENTS



| Ref. No. | Note | Part No.        | Description                         | Amt. Req. |
|----------|------|-----------------|-------------------------------------|-----------|
| 1        | 001  | B2935-761-000   | SPUR GEAR (152)                     | 1         |
| 2        |      | B2916-761-0A0   | SPUR GEAR BUSHING ASM.              | 2         |
| 3        |      | B2917-761-000   | SPUR GEAR BUSHING PIN               | (4)       |
| 4        |      | SS-7120910-TP   | SCREW 3/16-28 L=9                   | (4)       |
| 5        |      | B2913-761-0A0   | CLUTCH COLLAR ASM.                  | 2         |
| 6        |      | SS-8660610-TP   | SCREW 1/4-40 L=6                    | (2)       |
| 7        |      | SS-8660410-SP   | SCREW 1/4-40 L= 4.2                 | (2)       |
| 8        |      | B2914-761-000   | CLUTCH SPRING                       | 2         |
| 9        |      | B2919-761-000   | FEED CAM DRIVING WORM WHEEL         | 1         |
| 10       |      | B2918-761-000-A | FEED CAM DRIVING WORM WHEEL SHAFT   | 1         |
| 11       |      | B3542-771-000   | OIL FELT                            | 1         |
| 12       |      | B2911-761-000   | FEED CAM DRIVING SHAFT              | 1         |
| 13       | 001  | B2934-761-000   | SPUR GEAR (123)                     | 1         |
| 14       |      | B2915-761-800   | HANDLE CRANK BEVEL GEAR, LEFT       | 1         |
| 15       |      | B2915-761-AA0   | HANDLE CRANK BEVEL GEAR ASM., RIGHT | 1         |
| 16       |      | SS-8660610-TP   | SCREW 1/4-40 L=6                    | (2)       |
| 17       |      | CS-1111010-SH   | THRUST COLLAR ASM. D=11.11 W=10     | 1         |
| 18       |      | SS-8660530-TP   | SCREW 1/4-40 L= 4.5                 | (2)       |
| 19       |      | B2922-761-000   | HANDLE CRANK SHAFT                  | 1         |
| 20       |      | B2923-761-000   | HANDLE CRANK                        | 1         |
| 20-1     | 004  | B2923-761-00A   | HANDLE CRANK                        | 1         |
| 21       |      | SS-8150510-TP   | SCREW 15/64-28 L= 4.7               | 2         |
| 22       |      | SS-8620610-SP   | SCREW 3/16-32 L=6                   | 1         |
| 23       |      | 13758101        | HANDLE SHAFT                        | 1         |
| 24       |      | B2924-761-000-A | HANDLE SHAFT                        | 1         |
| 25       |      | B2910-761-0A0   | FEED CAM DRIVING GEAR ASM.          | 1         |
| 26       |      | SS-8660610-TP   | SCREW 1/4-40 L=6                    | (2)       |
| 27       |      | NS-6320640-SP   | NUT 1/2-20                          | 1         |
| 28       |      | B2909-761-000   | THRUST WASHER                       | 1         |
| 29       |      | B2908-761-000   | FEED CAM SHAFT                      | 1         |
| 30       |      | B2901-771-00C   | FEED CAM                            | 1         |
| 31       |      | WP-0982616-SP   | WASHER 9,8X24,0X2,6                 | 1         |
| 32       |      | SS-9241513-CP   | SCREW 3/8-18 L=15                   | 1         |
| 33       |      | B2902-761-000   | BAR TRIPPING SEGMENT NO.1           | 1         |
| 34       | 002  | B2902-761-800   | BAR TRIPPING SEGMENT NO.1 (R)       | 1         |
| 35       |      | WP-0480856-SP   | WASHER 4,8X8,4X0,8                  | 14        |
| 36       |      | SS-6111610-SP   | SCREW 11/64-40 L=16                 | 10        |
| 37       |      | B2904-771-000   | KNIFE TRIPPING SEGMENT              | 1         |
| 38       |      | B2905-771-000   | TENSION RELEASE TRIPPING SEGMENT 1  | 1         |
| 39       |      | B2906-771-000   | TENSION RELEASE TRIPPING SEGMENT 2  | 1         |
| 40       | 003  | B2906-761-800   | TRIPPING SEGMENT NO.2, UNDER 80     | 1         |
| 41       |      | B2902-761-000   | BAR TRIPPING SEGMENT NO.2           | 1         |
| 42       | 002  | B2903-761-800   | BAR TRIPPING SEGMENT NO.2 (B)       | 1         |
| 43       |      | B2951-781-000   | LOW-SPEED CAM                       | 1         |
| 44       |      | B2952-781-000   | STOPPER CAM                         | 1         |
| 45       |      | SS-7111410-SP   | SCREW 11/64-40 L=14                 | 4         |

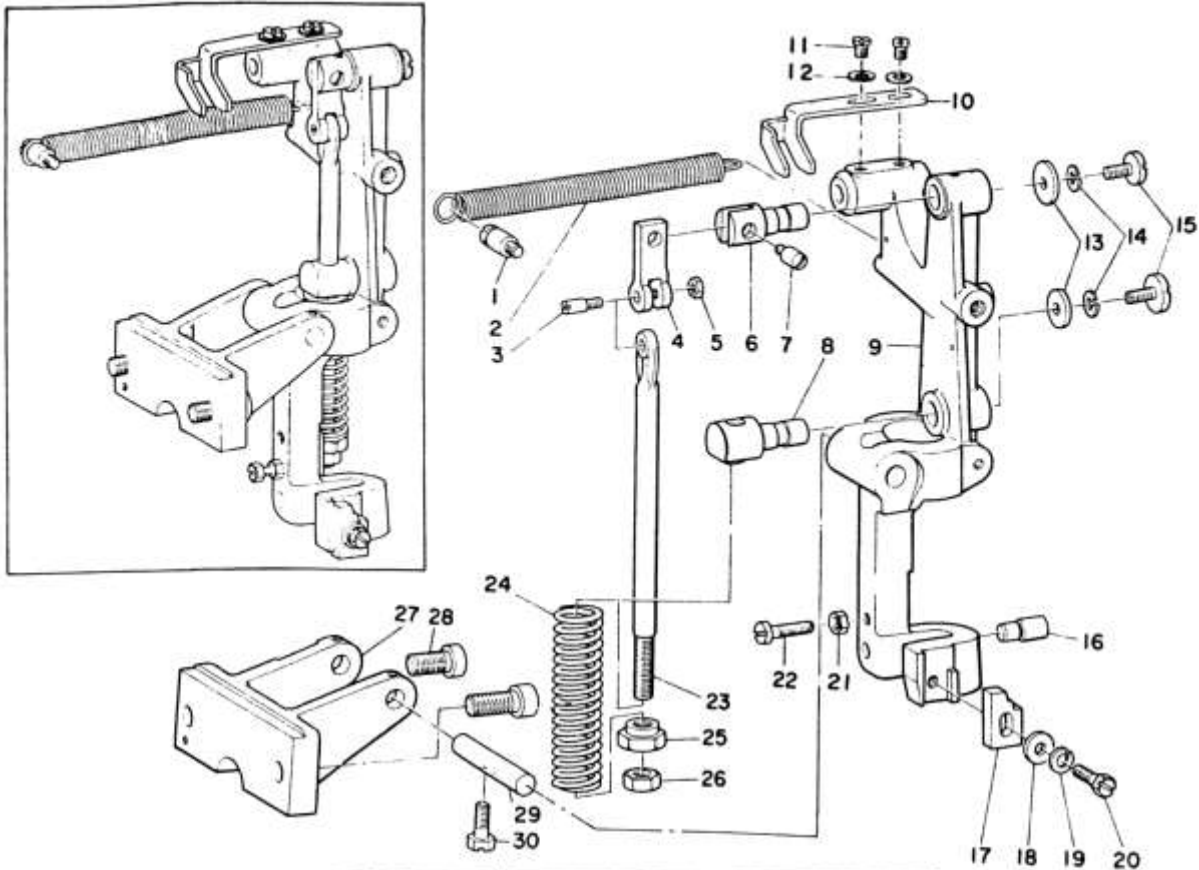
Note 001 ..... For exchanging gears, please refer to page 37, 21-(1).

002 ..... Special order part for 80% bartacking.

003 ..... Special order part for less than 80 stitches

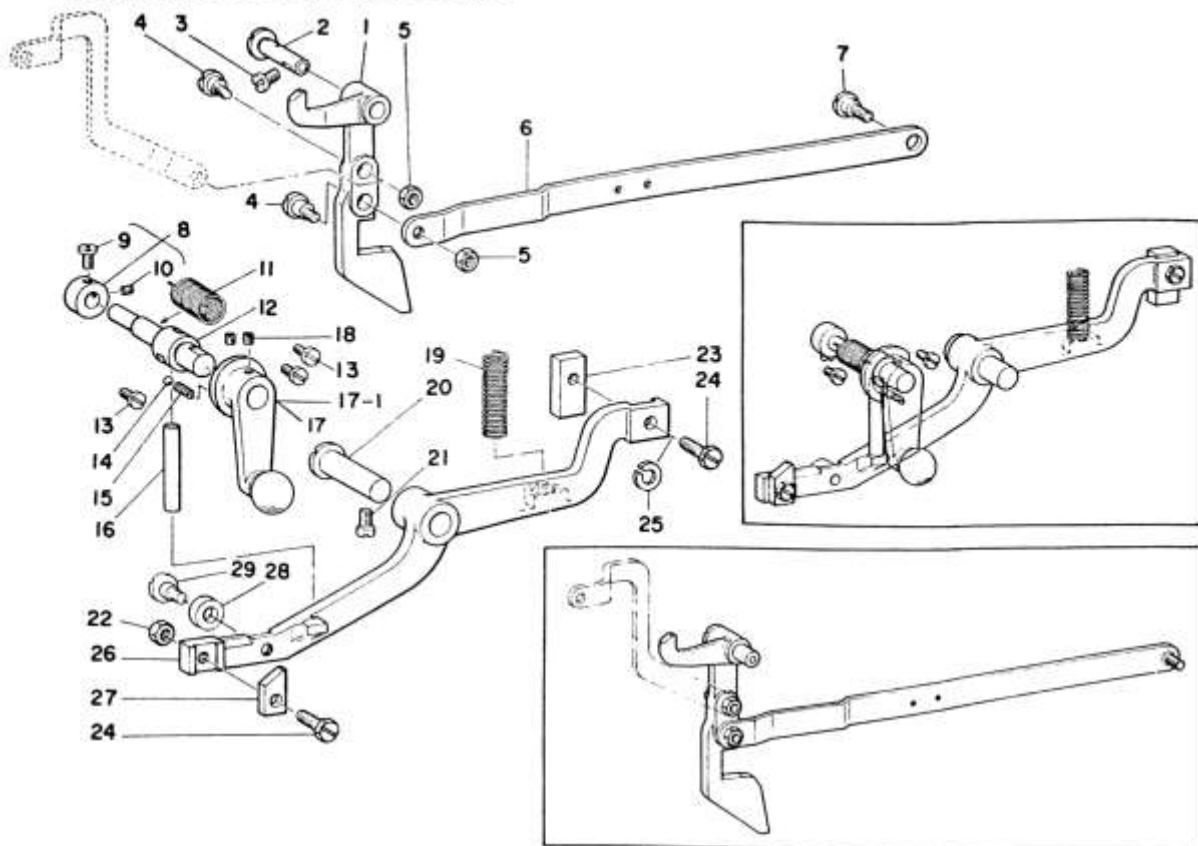
004 ..... For Urban White

## 11. STOP-MOTION COMPONENTS



| Ref No | Note | Part No.        | Description                   | Amt. Req. |
|--------|------|-----------------|-------------------------------|-----------|
| 1      |      | B3410-771-000   | SUSPENSION SCREW(A)           | 1         |
| 2      |      | B2653-771-000   | TENSION SPRING                | 1         |
| 3      |      | B2613-232-000   | STOP LINK ROD HINGE SCREW     | 1         |
| 4      |      | B2607-232-000   | STOP LINK                     | 1         |
| 5      |      | NS-6620310-SP   | NUT 3/16-32                   | 1         |
| 6      |      | B2608-232-000   | STOP LINK HINGE STUD          | 1         |
| 7      |      | B2611-232-000   | STOP LINK CONNECTING SCREW    | 1         |
| 8      |      | B2618-232-000   | STOP LINK ROD HINGE STUD      | 1         |
| 9      |      | B2604-771-000-A | STOP MOTION LEVER             | 1         |
| 10     |      | B2652-781-000   | BELT SHIFTER                  | 1         |
| 11     |      | SS-7150740-SP   | SCREW 15/64-28 L=7            | 2         |
| 12     |      | WP-0650876-S0   | WASHER 6.5X13X0.8             | 2         |
| 13     |      | WP-0612056-S0   | WASHER 6.1X18.5X2             | 2         |
| 14     |      | B2623-232-000   | WASHER                        | 2         |
| 15     |      | SS-7151330-SP   | SCREW 15/64-28 L=13.0         | 2         |
| 16     |      | B2648-232-000   | STOP PIN                      | 1         |
| 17     |      | B2653-781-000   | LATCH, A                      | 1         |
| 18     |      | WP-0612516-S0   | WASHER 6.1X15.2X2.5           | 1         |
| 19     |      | B2623-232-000   | WASHER                        | 1         |
| 20     |      | SS-9152130-CP   | SCREW 15/64-28 L=20.5         | 1         |
| 21     |      | NS-6150430-SP   | NUT 15/64-28                  | 1         |
| 22     |      | SS-6153040-SP   | SCREW 15/64-28 L=30           | 1         |
| 23     |      | B2612-232-000   | STOP LINK ROD                 | 1         |
| 24     |      | B2619-232-000   | STOP LINK ROD PRESSURE SPRING | 1         |
| 25     |      | B2621-232-000   | NUT, FOR STOP LINK ROD        | 1         |
| 26     |      | NS-6240630-SP   | NUT 3/8-18                    | 1         |
| 27     |      | B2601-761-000   | STOP MOTION LEVER BRACKET     | 1         |
| 28     |      | SS-6242272-TP   | SCREW 3/8-18 L=22.0           | 2         |
| 29     |      | B2602-771-000   | PIN                           | 1         |
| 30     |      | SS-9151630-CP   | SCREW 15/64-28 L=15.5         | 1         |

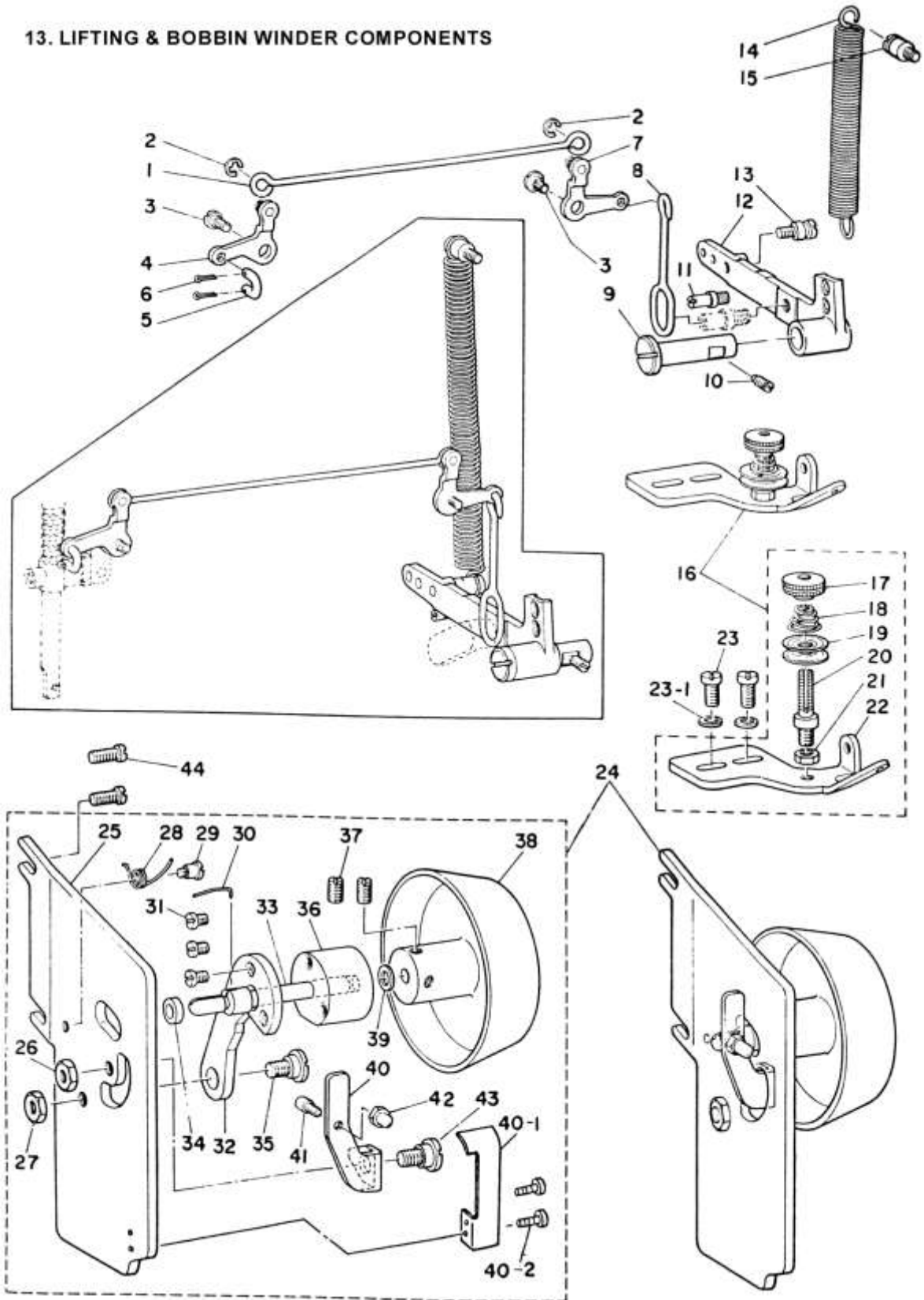
## 12. TRIPPING LEVER COMPONENTS



| Ref. No. | Note | Part No.      | Description                    | Amt. Req. |
|----------|------|---------------|--------------------------------|-----------|
| 1        |      | B2620-771-000 | STARTING LINK                  | 1         |
| 2        |      | B2416-761-000 | HINGE STUD                     | 1         |
| 3        |      | SS-7150940-SP | SCREW 15/64-28 L=9             | 1         |
| 4        |      | B2646-771-000 | HINGE SCREW                    | 1         |
| 5        |      | NS-6150310-SP | NUT 15/64-28                   | 2         |
| 6        |      | B2621-761-000 | STARTING LINK DRIVING ROD      | 1         |
| 7        |      | SD-0790451-SP | HINGE SCREW D= 7,94 H= 4,5     | 1         |
| 8        |      | CS-0791018-SH | THRUST COLLAR ASM. D=7,94 W=10 | 1         |
| 9        |      | SS-7110740-TP | SCREW 11/64-40 L=7             | (1)       |
| 10       |      | SS-8110510-SP | SCREW 11/64-40 L=5             | (1)       |
| 11       |      | B2614-761-000 | CRANK SHAFT TENSION SPRING     | 1         |
| 12       | *    | B2657-781-000 | HAND STOP CRANK SHAFT          | 1         |
| 13       |      | SS-6111010-SP | SCREW 11/64-40 L= 9,5          | 2         |
| 14       |      | B2608-761-000 | HAND STOP CRANK SHAFT BALL     | 1         |
| 15       |      | B2611-761-000 | CRANK SHAFT PRESSURE SPRING    | 1         |
| 16       | 001  | B2613-761-008 | HAND STOP ROD                  | 1         |
| 17       |      | B2610-761-0A0 | HAND STOP CRANK ASM.           | 1         |
| 17-1     | 002  | B2610-761-0A4 | HAND STOP CRANK ASM.           | 1         |
| 18       |      | SS-8150510-TP | SCREW 15/64-28 L= 4,7          | 2         |
| 19       |      | B2617-771-000 | TRIPPING LEVER TENSION SPRING  | 1         |
| 20       |      | B2605-761-000 | TRIPPING LEVER HINGE PIN       | 1         |
| 21       |      | SS-7150940-SP | SCREW 15/64-28 L=9             | 1         |
| 22       |      | NS-6150430-SP | NUT 15/64-28                   | 1         |
| 23       |      | B2607-761-000 | LATCH(B)                       | 1         |
| 24       |      | SS-9152130-CP | SCREW 15/64-28 L=20,5          | 2         |
| 25       |      | WS-0651510-KP | SPRING WASHER 6,5X12,5X1,5     | 1         |
| 26       |      | B2451-781-000 | TRIPPING LEVER                 | 1         |
| 27       |      | B2615-761-000 | TRIPPING DOG                   | 1         |
| 28       |      | B1439-781-000 | ROLLER                         | 1         |
| 29       |      | SD-0640471-SP | HINGE SCREW D= 6,35 H= 4,7     | 1         |

Note      001..... Selecting part  
              002..... For Urban White

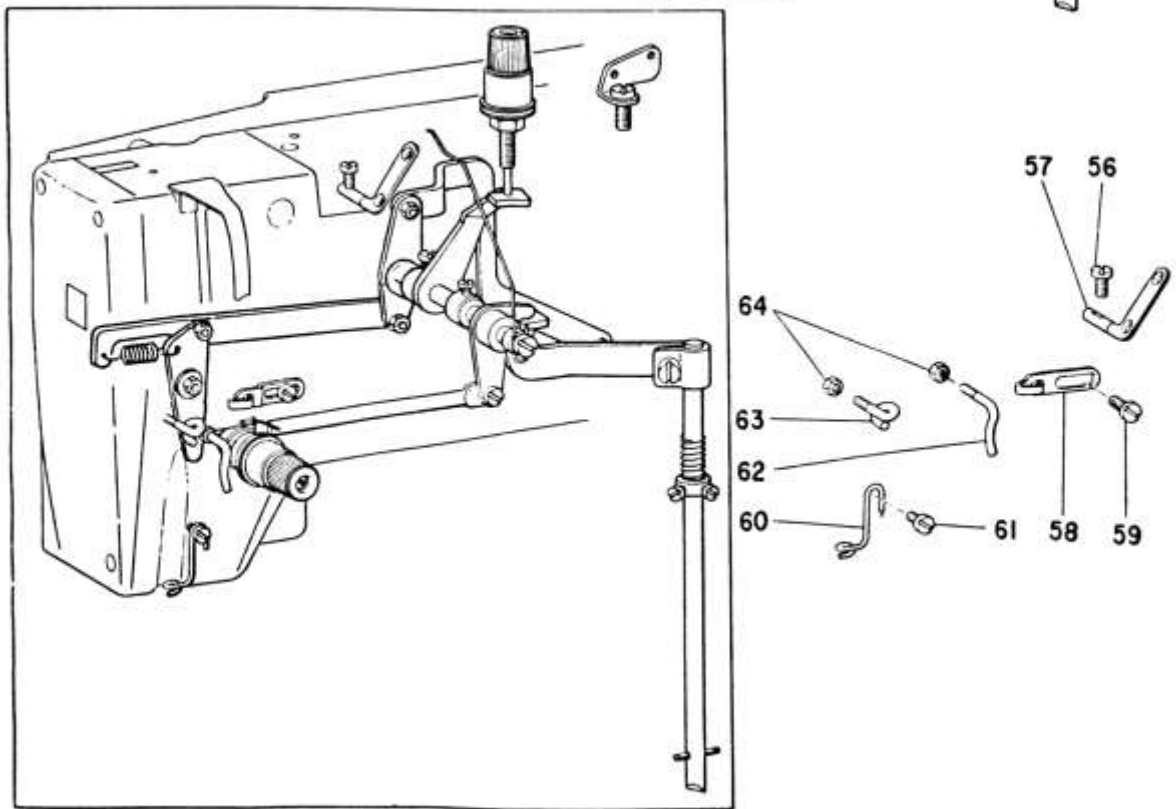
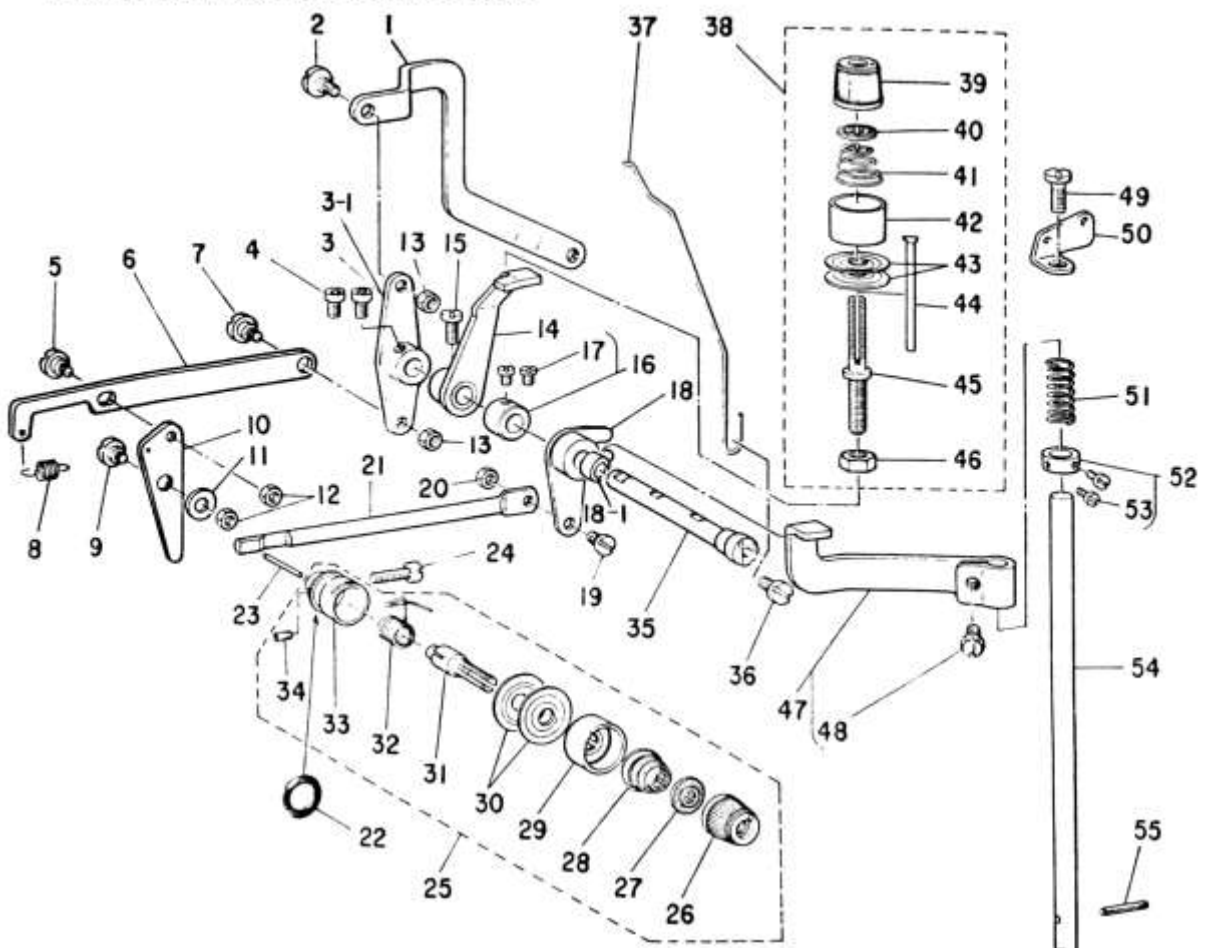
### 13. LIFTING & BOBBIN WINDER COMPONENTS





| Ref. No. | Note | Part No.      | Description                     | Amt. Req. |
|----------|------|---------------|---------------------------------|-----------|
| 1        |      | B3404-771-000 | PRESSER BAR LIFTING ROD, LONG   | 1         |
| 2        |      | RE-0500000-KU | SNAP RING 5                     | 2         |
| 3        |      | SD-0720331-SP | HINGE SCREW D= 7.24 H= 3.3      | 2         |
| 4        |      | B3402-771-0A0 | LEVER ASM, .FRONT               | 1         |
| 5        |      | B3406-761-000 | LINK                            | 1         |
| 6        |      | PD-0201000-0B | SPLIT PIN                       | 2         |
| 7        |      | B3408-771-0A0 | LEVER ASM, REAR                 | 1         |
| 8        |      | B3403-761-000 | PRESSER BAR LIFTING ROD         | 1         |
| 9        |      | B2605-761-000 | TRIPPING LEVER HINGE PIN        | 1         |
| 10       |      | SS-8151150-SP | SCREW 15/64-28 L=10,5           | 1         |
| 11       |      | B3412-771-000 | LIFTING LEVER STOPPER           | 1         |
| 12       |      | B3401-771-000 | PRESSER BAR LIFTING LEVER       | 1         |
| 13       |      | B3411-771-000 | SUSPENSION SCREW(B)             | 1         |
| 14       |      | B3451-781-000 | PRESSER FOOT LIFTING SPRING     | 1         |
| 15       |      | B3410-771-000 | SUSPENSION SCREW(A)             | 1         |
| 16       |      | B3258-781-0A0 | BOBBIN WINDER TENSION ASM.      | 1         |
| 17       |      | B3216-047-000 | BOBBIN WINDER TENSION NUT       | (1)       |
| 18       |      | B3218-232-000 | BOBBIN WINDER TENSION SPRING    | (1)       |
| 19       |      | B3214-047-000 | BOBBIN WINDER TENSION DISC      | (2)       |
| 20       |      | B3219-232-000 | BOBBIN WINDER TENSION POST      | (1)       |
| 21       |      | NS-6110310-SP | NUT 11/64-40                    | (1)       |
| 22       |      | B3258-781-000 | BOBBIN WINDER TENSION BRACKET   | (1)       |
| 23       |      | SS-7110840-SP | SCREW 11/64-40 L= 7,8           | 4         |
| 23-1     |      | WP-0482086-SD | WASHER 4,8X11,5X2,0             | 2         |
| 24       |      | B3251-781-0A0 | BOBBIN WINDER ASM.              | 1         |
| 25       |      | B3251-781-000 | BOBBIN WINDER BRACKET           | (1)       |
| 26       |      | NS-6110310-SP | NUT 11/64-40                    | (1)       |
| 27       |      | NS-6150310-SP | NUT 15/64-28                    | (1)       |
| 28       |      | B3257-781-000 | BOBBIN WINDER SPRING            | (1)       |
| 29       |      | SD-0450401-SP | HINGE SCREW D= 4,5 H= 4         | (1)       |
| 30       |      | B3210-771-000 | BOBBIN SET SPRING               | (1)       |
| 31       |      | SS-6090620-SP | SCREW 9/64-40 L=6               | (3)       |
| 32       |      | B3253-781-000 | PULLEY SHAFT BASE               | (1)       |
| 33       |      | B3255-781-000 | BOBBIN WINDER SHAFT             | (1)       |
| 34       |      | S3224-771-000 | COLLAR                          | (1)       |
| 35       |      | SD-0790433-TP | HINGE SCREW D= 7,94 H= 4,3      | (1)       |
| 36       |      | B3254-781-000 | BOBBIN WINDER SHAFT BUSHING     | (1)       |
| 37       |      | SS-8120740-SP | SCREW 3/16-28 L=7               | (2)       |
| 38       |      | B3252-781-000 | BOBBIN WINDER DRIVING PULLEY    | (1)       |
| 39       |      | WP-0651056-SD | WASHER 6,5X11X1                 | (1)       |
| 40       |      | B3256-781-000 | BOBBIN WINDER TRIP LATCH        | (1)       |
| 40-1     |      | B3259-781-000 | BOBBIN WINDER TRIP LATCH SPRING | 1         |
| 40-2     |      | SS-7090520-SP | SCREW                           | 2         |
| 41       |      | B3214-771-000 | ADJUSTING SCREW                 | (1)       |
| 42       |      | B3215-771-000 | ADJUSTING NUT                   | (1)       |
| 43       |      | SD-0720221-SP | HINGE SCREW D= 7.24 H= 2.2      | (1)       |
| 44       |      | SS-7110840-SP | SCREW 11/64-40 L= 7,8           | 2         |

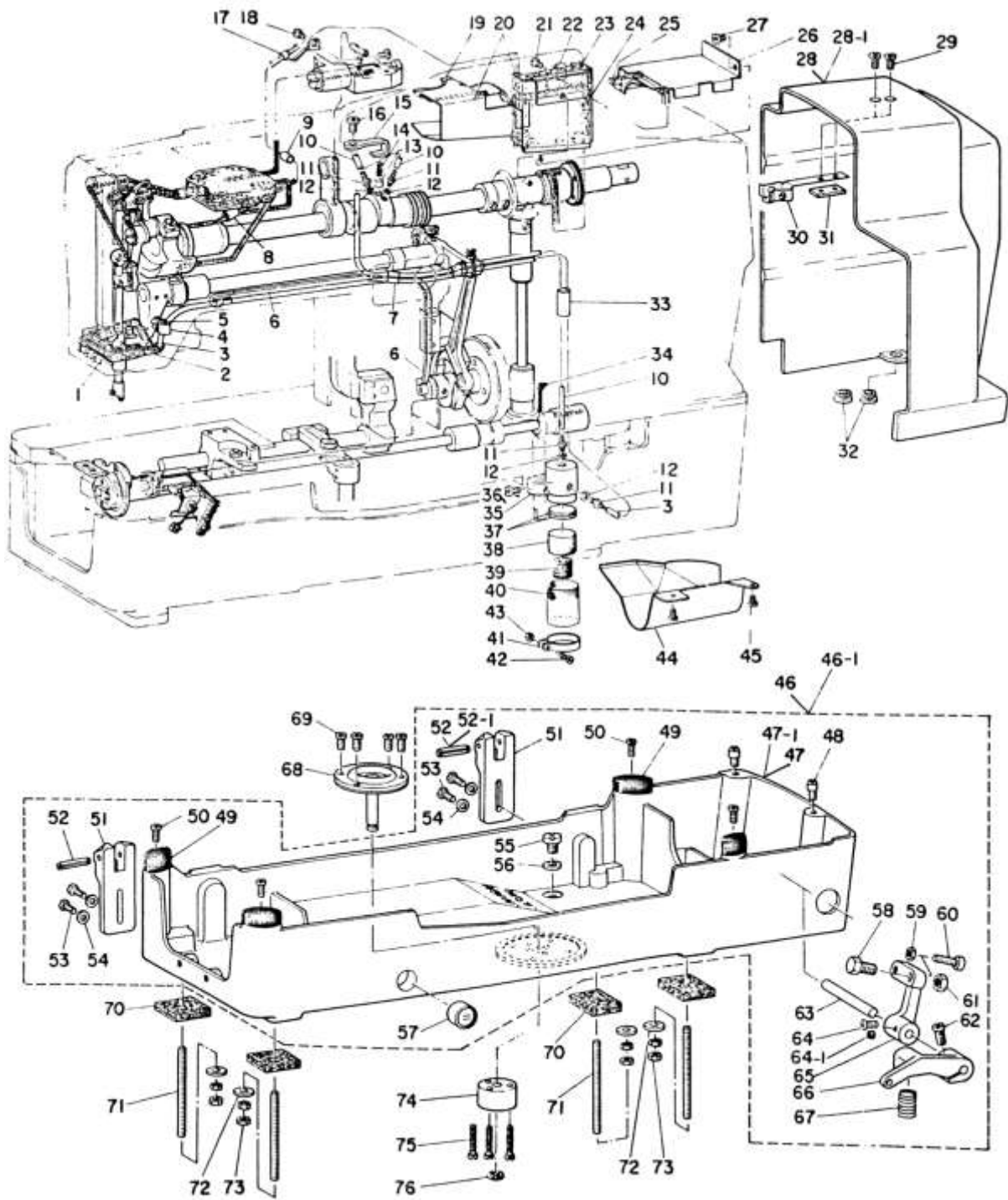
# 14.THREAD TENSION COMPONENTS



| Ref. No. | Note | Part No.        | Description                       | Amt. Req. |
|----------|------|-----------------|-----------------------------------|-----------|
| 1        |      | B3104-771-000   | TENSION RELEASE LINK              | 1         |
| 2        |      | SD-0640391-TP   | HINGE SCREW D= 6.35 H= 3.9        | 1         |
| 3        |      | B3151-781-0A0   | TENSION RELEASE LEVER NO.1        | -         |
| 3-1      |      | B3151-781-0A0-A | TENSION RELEASE LEVER             | 1         |
| 4        |      | SS-7621040-SP   | SCREW 3/16-32 L= 9.5              | -         |
|          |      | SS-6660712-TP   | SCREW 1/4-40 L= 7.0               | 2         |
| 5        |      | SD-0640241-SP   | HINGE SCREW D= 6.35 H= 2.4        | 1         |
| 6        |      | B2054-781-000   | BLOCKING LINK                     | 1         |
| 7        |      | SD-0640391-TP   | HINGE SCREW D= 6.35 H= 3.0        | 1         |
| 8        |      | B2056-781-000   | BLOCKING ARM SPRING               | 1         |
| 9        |      | SD-0790311-TP   | HINGE SCREW D= 7.94 H= 3.1        | 1         |
| 10       |      | B2055-781-000   | BLOCKING ARM                      | 1         |
| 11       |      | B2057-781-000   | BLOCKING ARM BRACKET              | 1         |
| 12       |      | NS-6110310-SP   | NUT 11/64-40                      | 2         |
| 13       |      | NS-6120310-SP   | NUT 3/16-28                       | 1         |
| 14       |      | B3116-771-000   | TENSION RELEASE LEVER             | 1         |
| 15       |      | SS-7621040-SP   | SCREW 3/16-32 L= 9.5              | 1         |
| 16       |      | CS-0791010-SH   | THRUST COLLAR ASM. D=7.94 W=10    | 1         |
| 17       |      | SS-7110740-TP   | SCREW 11/64-40 L=7                | (2)       |
| 18       |      | B3107-771-00A   | TENSION RELEASE LEVER CRANK, NO.2 | 1         |
| 18-1     |      | B3107-771-00B   |                                   | 1         |
| 19       |      | SD-0500301-SP   | HINGE SCREW D= 5 H= 3             | 1         |
| 20       |      | NS-6090310-SP   | NUT 9/64-40                       | 1         |
| 21       |      | B3108-771-000   | TENSION RELEASE ROD               | 1         |
| 22       |      | RO-0952001-00   | RUBBER KING                       | 1         |
| 23       | 001  | B3118-552-000   | TENSION RELEASE PIN, NO.2         | 1         |
| 24       |      | SS-6111610-SP   | SCREW 11/64-40 L=16               | 1         |
| 25       |      | B3110-771-0A0   | TENSION CONTROLLER NO.2 ASM.      | 1         |
| 26       |      | B3119-771-000   | TENSION NUT                       | (1)       |
| 27       |      | B3120-771-000   | THREAD PULLING WIRE               | (1)       |
| 28       |      | B3129-771-000   | TENSION SPRING                    | (1)       |
| 29       |      | B3107-804-000   | TENSION DISC PRESSER TUBE         | (1)       |
| 30       |      | B3126-012-000   | TENSION DISC                      | (2)       |
| 31       |      | B3111-761-000   | TENSION POST NO.3                 | (1)       |
| 32       |      | B3112-761-000   | THREAD TAKE-UP SPRING             | (1)       |
| 33       |      | B3110-771-000   | TENSION POST SOCKET               | (1)       |
| 34       |      | SS-3090670-SP   | SCREW 9/64-40 L= 5.5              | (1)       |
| 35       |      | B3106-771-000   | TENSION RELEASE LEVER SHAFT       | 1         |
| 36       |      | SS-7110840-SP   | SCREW 11/64-40 L= 7.8             | 1         |
| 37       |      | B3120-771-000   | THREAD PULLING WIRE               | 1         |
| 38       |      | B3103-771-0A0   | TENSION CONTROLLER NO. 1 ASM.     | 1         |
| 39       |      | B3119-771-000   | TENSION NUT                       | (1)       |
| 40       |      | B3120-125-000   | TENSION DISC STOPPER              | (1)       |
| 41       |      | B2017-372-000   | TENSION SPRING NO.1               | (1)       |
| 42       |      | B3107-804-000   | TENSION DISC PRESSER TUBE         | (1)       |
| 43       |      | B3126-012-000   | TENSION DISC                      | (2)       |
| 44       |      | B3103-761-000   | TENSION RELEASE PIN NO.2          | (1)       |
| 45       |      | B2019-372-000   | TENSION POST NO.2                 | (1)       |
| 46       |      | NS-6160520-SP   | NUT 1/4-24                        | (1)       |
| 47       |      | B3102-771-0A0   | TENSION RELEASE ARM ASM.          | 1         |
| 48       |      | SS-3660940-TP   | SCREW 1/4-40 L=8.5                | (1)       |
| 49       |      | SS-7151210-SP   | SCREW 15/64-28 L=12               | 1         |
| 50       |      | B1111-232-000   | THREAD GUIDE PLATE                | 1         |
| 51       |      | B3117-771-000   | SPRING                            | 1         |
| 52       |      | CS-0790720-TH   | THRUST COLLAR ASM. D=7.94 W=6     | 1         |
| 53       |      | SS-7090520-SP   | SCREW 9/64-40 L= 4.5              | (2)       |
| 54       |      | B3101-761-000   | TENSION RELEASE ROD               | 1         |
| 55       |      | PS-0300182-KF   | SPRING PIN 3X18                   | 1         |
| 56       |      | B3109-761-000   | THREAD EYELET                     | 1         |
| 57       |      | SS-7110710-SP   | SCREW 11/64-40 L=7                | 1         |
| 58       |      | B1126-552-000   | FRAME THREAD GUIDE A              | 1         |
| 59       |      | SS-7090710-SP   | SCREW 9/64-40 L= 6.8              | 1         |
| 60       |      | B3115-761-000   | NEEDLE BAR THREAD GUIDE           | 1         |
| 61       |      | SS-7110840-SP   | SCREW 11/64-40 L= 7.8             | 1         |
| 62       |      | B3118-771-000   | TENSION THREAD GUIDE, NO.2        | 1         |
| 63       |      | B3114-771-000   | TAKE-UP THREAD GUIDE              | 1         |
| 64       |      | NS-6090310-SP   | NUT 9/64-40                       | 2         |

Note 001 ..... Selecting part

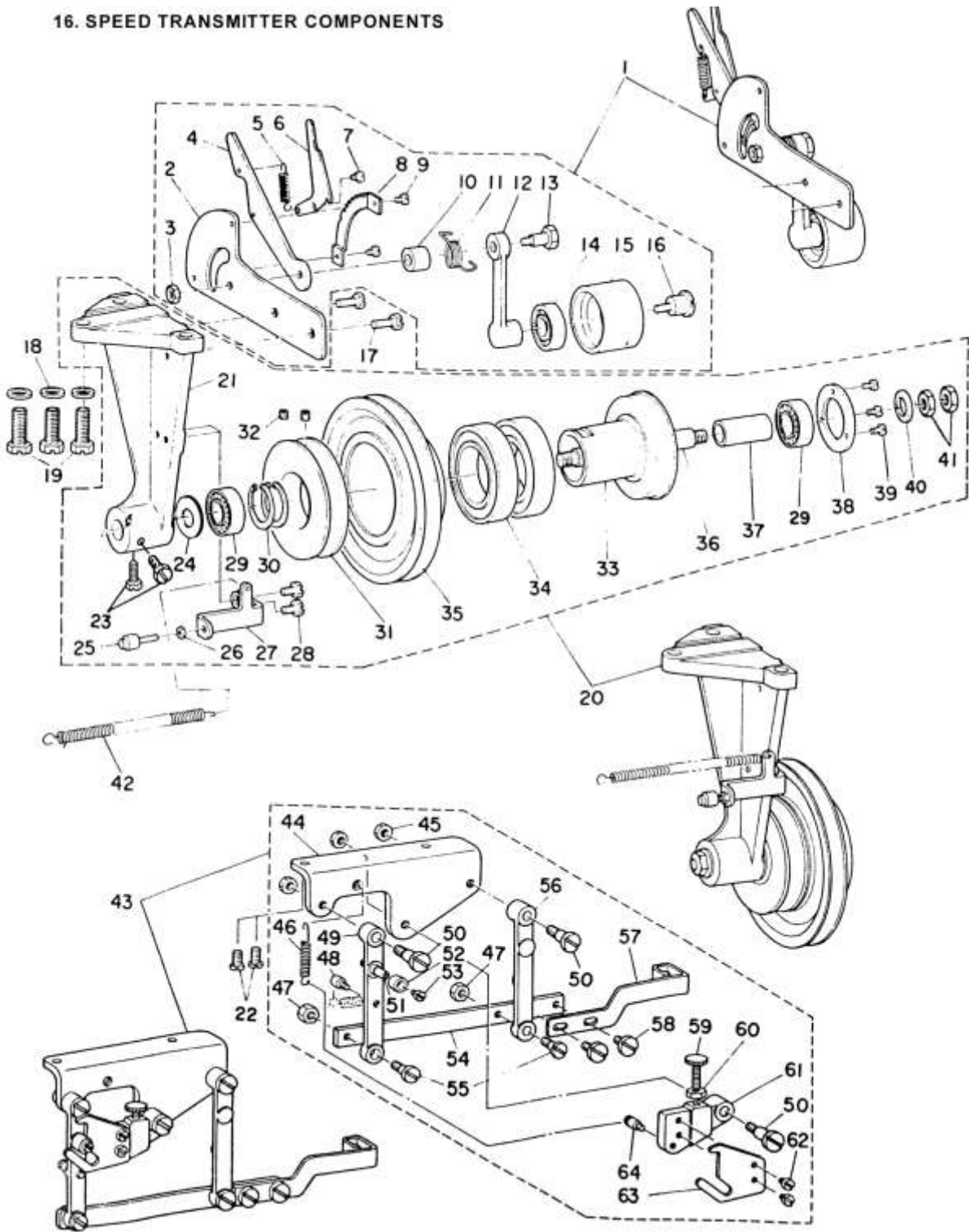
# 15. LUBRICATION MECHANISM COMPONENTS



| Ref. No. | Note | Part No.        | Description                      | Amt. Req. |
|----------|------|-----------------|----------------------------------|-----------|
| 1        |      | 83566-771-000   | OIL FELT HOLDER                  | 1         |
| 2        |      | 83549-771-000   | OIL RETURN FELT (A)              | 1         |
| 3        |      | 83568-771-000   | OIL RETURN TUBE                  | 1         |
| 4        |      | 02611-555-800-A | CABLE HOLDER                     | 1         |
| 5        |      | SS-7110710-SP   | SCREW 11/64-40 L=7               | 1         |
| 6        |      | 83541-012-000   | OIL WICK                         | 1         |
| 7        |      | 83557-771-000   | PIPE GUIDE (A)                   | 1         |
| 8        |      | BP-4000000-00   | VINYL TUBE, WHITE D=4            | 0.1       |
| 9        |      | BP-5000000-00   | VINYL TUBE, WHITE D=5            | 0.1       |
| 10       |      | BP-3000000-00   | VINYL TUBE, WHITE D=3            | 1.0       |
| 11       |      | SQ-1110402-MZ   | CONNECTING SCREW                 | 4         |
| 12       |      | 83534-012-000   | GASKET                           | 4         |
| 13       |      | 83534-155-000   | PLUNGER                          | 1         |
| 14       |      | 81214-038-000   | PLUNGER SPRING                   | 1         |
| 15       |      | 83541-771-000   | THRUST PLATE                     | 1         |
| 16       |      | SS-7150740-SP   | SCREW 15/64-28 L=7               | 1         |
| 17       |      | 83565-771-000   | OIL FELT GUIDF                   | 1         |
| 18       |      | SS-7110710-SP   | SCREW 11/64-40 L=7               | 1         |
| 19       |      | 83560-771-000   | OIL FELT                         | 1         |
| 20       |      | 81135-771-0A0   | OIL PAN ASM                      | 1         |
| 21       |      | SS-7110510-SP   | SCREW 11/64-40 L=5               | 1         |
| 22       |      | 83561-771-000   | OIL UNWOVEN CLOTH                | 1         |
| 23       |      | 81148-771-000   | OIL FELT                         | 1         |
| 24       |      | 81147-771-000   | OIL FELT                         | 1         |
| 25       |      | 83541-012-000   | OIL WICK                         | 1         |
| 26       |      | 83562-771-000   | OIL SHIELD                       | 1         |
| 27       |      | SS-7110510-SP   | SCREW 11/64-40 L=5               | 1         |
| 28       |      | 81154-781-000   | BELT GUARD                       | 1         |
| 28-1     | 001  | 31134-781-00A   | BELT GUARD                       | 1         |
| 29       |      | SS-7110910-SP   | SCREW 11/64-40 L= 8.5            | 2         |
| 30       |      | 81155-781-000   | BELT GUARD SET SCREW             | 1         |
| 31       |      | 84127-352-000   | BOTTOM GUIDE                     | 1         |
| 32       |      | 81154-781-000   | RUBBER BUSHING                   | 2         |
| 33       |      | BP-3000000-00   | VINYL TUBE, WHITE D=3            | 0.1       |
| 34       |      | C2-3030000-00   | OIL WICK                         | 0.1       |
| 35       |      | 83540-771-000   | OIL PUMP BASE                    | 1         |
| 36       |      | SS-7110910-SP   | SCREW 11/64-40 L= 8.5            | 1         |
| 37       |      | 83570-771-000   | FILTER                           | 2         |
| 38       |      | 83544-771-000   | OIL FELT                         | 1         |
| 39       |      | 83569-771-000   | SPRING                           | 1         |
| 40       |      | 83545-771-000   | FILTER SCREEN                    | 1         |
| 41       |      | 81850-512-000   | LUBRICATING SHAFT BUSHING HOLDER | 1         |
| 42       |      | SS-7090910-SP   | SCREW 9/64-40 L= 8.5             | 1         |
| 43       |      | NS-6090310-SP   | NUT 9/64-40                      | 1         |
| 44       |      | 83564-771-000-A | OIL SHIELD                       | 1         |
| 45       |      | SS-7110510-SP   | SCREW 11/64-40 L=5               | 2         |
| 46       |      | 81151-781-0A0   | MACHINE BASE ASM.                | 1         |
| 46-1     | 001  | 81151-781-0AA   | MACHINE BASE ASM.                | 1         |
| 47       |      | 81151-781-000   | MACHINE BASE                     | (1)       |
| 47-1     | 001  | 81151-781-00A   | MACHINE BASE                     | (1)       |
| 48       |      | 81157-781-000   | GUIDE PIN                        | (2)       |
| 49       |      | 81125-761-000   | RUBBER CUSHION                   | (4)       |
| 50       |      | SS-7111120-SP   | SCREW 11/64-40 L=10.5            | (4)       |
| 51       |      | 81122-761-000   | HINGE HOLDER                     | (2)       |
| 52       |      | 81120-761-000   | PIN                              | (2)       |
| 52-1     | 001  | 81122-761-00A   | PIN                              | (2)       |
| 53       |      | SS-9152130-CP   | SCREW 15/64-28 L=20.5            | (4)       |
| 54       |      | WP-0621016-SD   | WASHER 6.2X13X1                  | (4)       |
| 55       |      | SS-6741010-SP   | SCREW 3/8-28 L=10                | (2)       |
| 56       |      | 88219-125-000   | OIL DRAIN CAP GASKET             | (2)       |
| 57       |      | 81135-352-000   | OIL GUAGE                        | (1)       |
| 58       |      | SS-9201973-CP   | SCREW 5/16-18 L=10               | (1)       |
| 59       |      | NS-6150310-SP   | NUT 15/64-28                     | (1)       |
| 60       |      | 81453-771-0A0   | STOP SCREW ASM.                  | (1)       |
| 61       |      | NS-6200710-SP   | NUT 5/16-18                      | (1)       |
| 62       |      | SS-7151710-SP   | SCREW 15/64-28 L=17              | (1)       |
| 63       |      | 82656-781-000   | STARTING LINK SHAFT              | (1)       |
| 64       |      | SS-9150860-SP   | SCREW 15/64-28 L= 8              | (1)       |
| 64-      |      | SS-8150710-SP   | SCREW 15/64-28 L=7               | (1)       |
| 65       |      | 82654-781-000   | STARTING LINK                    | (1)       |
| 66       |      | 82655-781-000   | STARTING LEVER                   | (1)       |
| 67       |      | 82619-761-000   | STARTING LEVER PRESSURE SPRING   | (1)       |
| 68       |      | 87140-781-0A0   | SHIFTER DRIVING PIN              | 1         |
| 69       |      | SS-7110910-SP   | SCREW 11/64-40 L= 8.5            | 6         |
| 70       |      | 81133-761-000   | MACHINE BASE FELT PAD            | 4         |
| 71       |      | 81153-771-000   | MACHINE BASE SCREW STUD          | 4         |
| 72       |      | WP-0612056-SD   | WASHER 6.1X18.5X2                | 4         |
| 73       |      | NS-6150310-SP   | NUT 15/64-28                     | 8         |
| 74       |      | 81157-781-000   | DRIVING PIN BASE                 | 1         |
| 75       |      | SS-7112420-SP   | SCREW 11/64-40 L=24              | 1         |
| 76       |      | RE-0600000-K6   | SNAP RING 6                      | 1         |

Note 001.....For Urban White

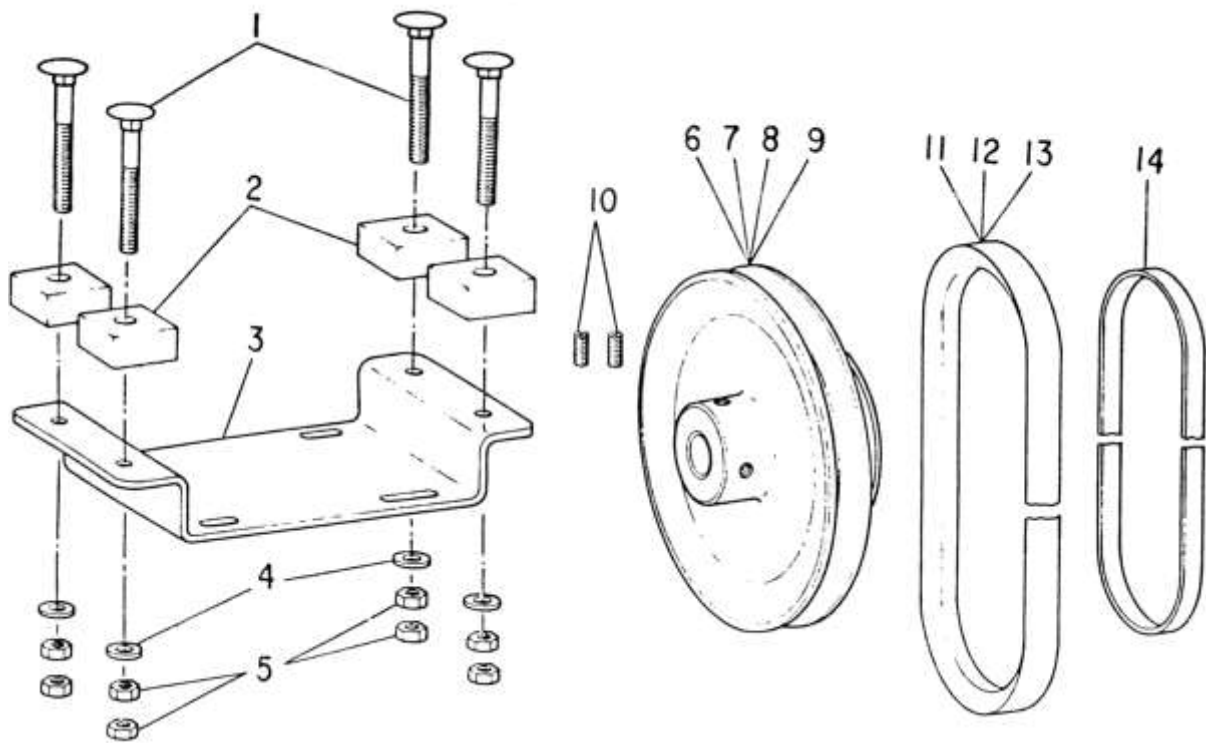
16. SPEED TRANSMITTER COMPONENTS





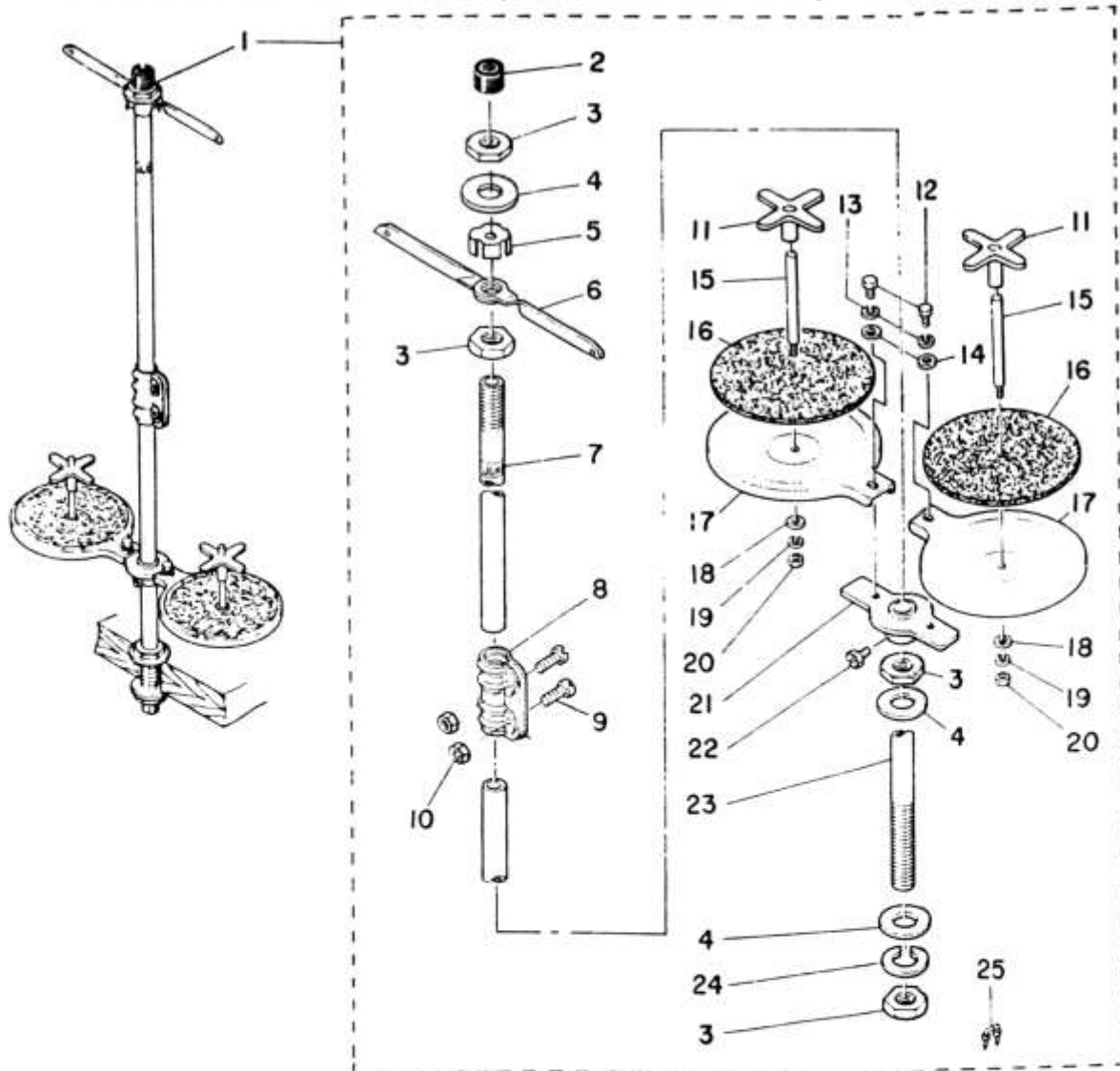
| Ref. No. | Note | Part No.        | Description                       | Amt. Req. |
|----------|------|-----------------|-----------------------------------|-----------|
| 1        |      | B7180-781-0A0   | TENSION PULLEY ASM,               | 1         |
| 2        |      | B7130-781-000   | TENSION PULLEY BRACKET            | (1)       |
| 3        |      | NS-6150430-SP   | NUT 15/64-28                      | (1)       |
| 4        |      | B7184-781-000   | TENSION LEVER                     | (1)       |
| 5        |      | B4419-372-000   | NIPPER BAR ACTUATING LEVER SPRING | (1)       |
| 6        |      | B7185-781-000   | FIXING PAWL                       | (1)       |
| 7        |      | SD-0450211-SP   | HINGE SCREW D= 4,50 H= 2,1        | (1)       |
| 8        |      | B7186-781-000   | RATCHET                           | (1)       |
| 9        |      | SS-7110710-SP   | SCREW 11/64-40 L=7                | (2)       |
| 10       |      | B7187-781-000   | LEVER COLLAR                      | (1)       |
| 11       |      | B7183-781-000   | TENSION SPRING                    | (1)       |
| 12       |      | B7182-781-000   | TENSION PULLEY LINK               | (1)       |
| 13       |      | SD-0902501-SP   | HINGE SCREW D=9 H=25              | (1)       |
| 14       |      | SB-1150002-00   | BEARING                           | (1)       |
| 15       |      | B7131-781-000   | TENSION PULLEY                    | (1)       |
| 16       |      | SD-1501101-SP   | HINGE SCREW D=14,5 H=11           | (1)       |
| 17       |      | SS-9151440-CP   | SCREW 15/64-28 L=14               | 2         |
| 18       |      | WP-0651056-SH   | WASHER 6,5X11X1                   | 3         |
| 19       |      | SS-9152130-CP   | SCREW 15/64-28 L=20,5             | 3         |
| 20       |      | B7151-781-0A0-A | SHIFTER DRIVING PIN               | 1         |
| 21       |      | B7151-781-000   | SPEED TRANSMITTER BRACKET         | (1)       |
| 22       |      | SS-7151210-SP   | SCREW 15/64-28 L=12               | 2         |
| 23       |      | SS-9861230-CP   |                                   | 2         |
| 24       |      | B1221-771-00A   | HIGH SPEED WASHER FOR BEARING     | (1)       |
| 25       |      | B1453-771-0A0   | STOP SCREW ASM,                   | (1)       |
| 26       |      | NS-6150310-SP   | NUT 15/64-28                      | (1)       |
| 27       |      | B7158-781-000   | SHIFTER STOPPER BRACKET           | (1)       |
| 28       |      | SS-9151440-CP   | SCREW 15/64-28 L=14               | (2)       |
| 29       |      | SB-1150002-00   | BEARING                           | (2)       |
| 30       |      | RC-3500002-KP   | RETAINING RING 35                 | (2)       |
| 31       |      | B7155-781-000   | ACCELERATING PULLEY               | (1)       |
| 32       |      | SS-8150710-SP   | SCREW 15/64-28 L=7                | (2)       |
| 33       |      | B7154-781-000   | HIGH-SPEED PULLEY                 | (1)       |
| 34       |      | SB-1450004-00   | BEARING D=45X75                   | (2)       |
| 35       |      | B7156-781-000-A | LOW-SPEED PULLEY                  | (1)       |
| 36       |      | B7152-781-000-A | SPEED TRANSMITTER SHAFT           | (1)       |
| 37       |      | B7153-781-000   | SLEEVE                            | (1)       |
| 38       |      | B7157-781-000   | BEARING PRESSER                   | (1)       |
| 39       |      | SS-7090710-SP   | SCREW 9/64-40 L= 4,8              | (3)       |
| 40       |      | WP-1002066-SZ   | WASHER 10,0X17,0X2,0              | (1)       |
| 41       |      | NS-6740510-SP   | NUT 3/8-28                        | (2)       |
| 42       |      | B7159-781-000   | SHIFTER TENSION SPRING            | 1         |
| 43       |      | B7161-781-0A0   | SHIFTER BASE ASM,                 | 1         |
| 44       |      | B7161-781-000   | SHIFTER BASE                      | (1)       |
| 45       |      | NS-6150310-SP   | NUT 15/64-28                      | (3)       |
| 46       |      | B7169-781-000   | SHIFTER CAM SPRING                | (1)       |
| 47       |      | NS-6160520-SP   | NUT 1/4-24                        | (2)       |
| 48       |      | B2714-761-000   | SPRING SUSPENSION SCREW STUD      | (1)       |
| 49       |      | B7163-781-000   | SHIFTER DRIVING ARM               | (1)       |
| 50       |      | B7171-781-000   | HINGE SCREW D= 7,94 H=15,0        | (3)       |
| 51       |      | B2014-761-000   | ROLLER STUD                       | (1)       |
| 52       |      | B2507-372-000   | CAM ROLL                          | (1)       |
| 53       |      | SS-6080610-TP   | SCREW 1/8-44 L=6                  | (1)       |
| 54       |      | B7165-781-000   | SHIFTER INSTALLING PLATE          | (1)       |
| 55       |      | SD-0790802-SP   | HINGE SCREW D= 7,94 H= 8,0        | (2)       |
| 56       |      | B7164-781-000   | SHIFTER HOLDING ARM               | (1)       |
| 57       |      | B7166-781-000   | SPEED TRANSMITTER SHIFTER         | (1)       |
| 58       |      | SS-7161040-SP   | SCREW 1/4-24 L= 9,5               | (2)       |
| 59       |      | B7162-781-000   | SHIFTER PIN                       | (1)       |
| 60       |      | NS-6150430-SP   | NUT 15/64-28                      | (1)       |
| 61       |      | B7167-781-000   | SHIFTER CAM MOUNTING              | (1)       |
| 62       |      | SS-7110910-SP   | SCREW 11/64-40 L= 8,5             | (2)       |
| 63       |      | B7168-781-000   | SHIFTER CAM                       | (1)       |
| 64       |      | MAT-80116S00    | SUSPENSION PIN                    | (1)       |

### 17. MOTOR PULLEY COMPONENTS



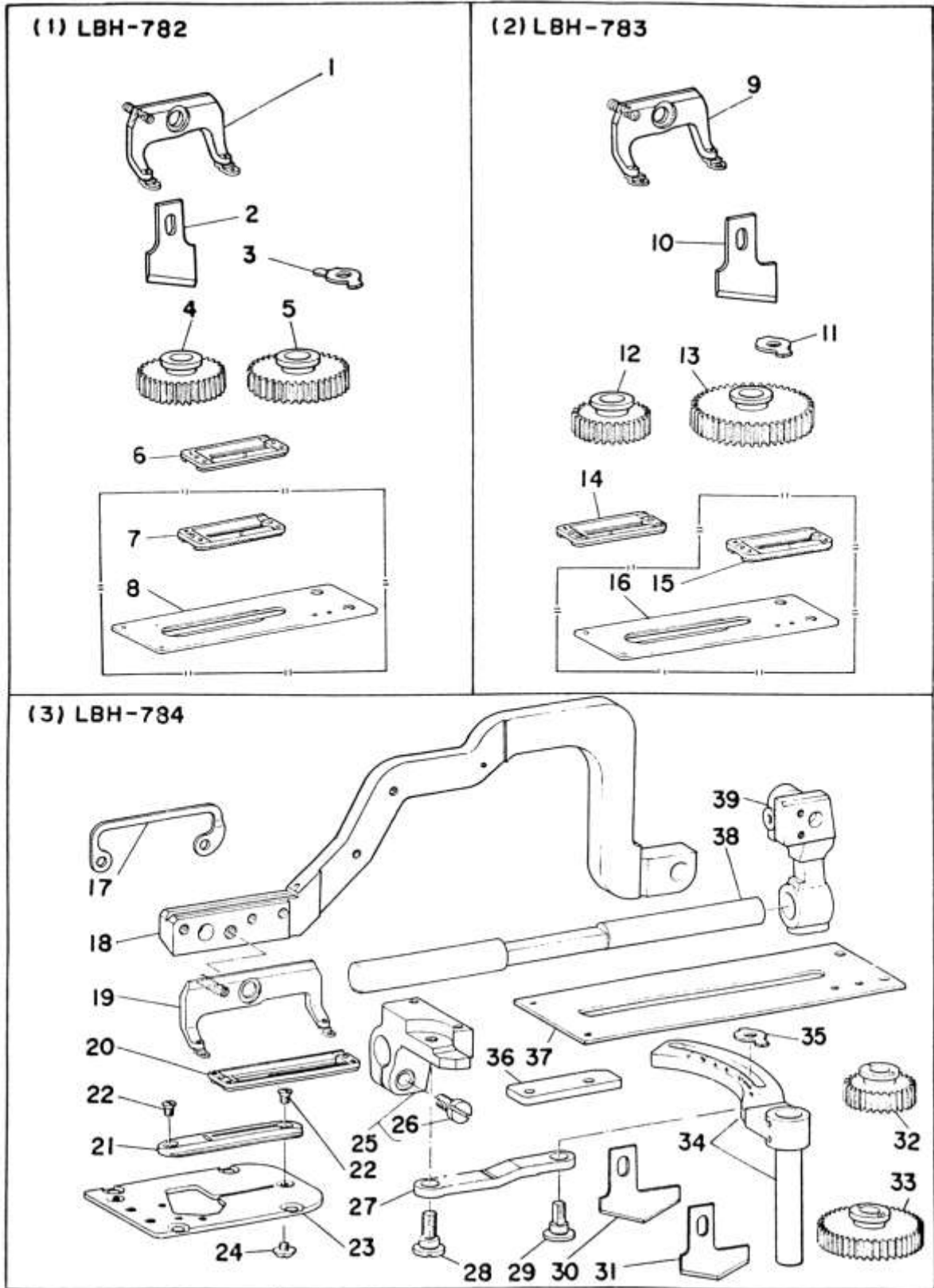
| Ref. No. | Note | Part No.        | Description                   | Amt. Req. |
|----------|------|-----------------|-------------------------------|-----------|
| 1        |      | MTJ-HS000000    | MOUNTING BOLT                 | 4         |
| 2        |      | 97109-771-000   | SPACER                        | 4         |
| 3        |      | 87299-781-000   | MOTOR BASE PLATE              | 1         |
| 4        |      | WP-0850002-SC   | WASHER 8.5X18X1.6             | 4         |
| 5        |      | NS-6200520-SP   | NUT 5/16-18                   | 8         |
| 6        | 001  | 87253-781-000-A | MOTOR PULLEY FOR 50HZ 3000SPM | 1         |
| 7        | 001  | 87254-781-000-A | MOTOR PULLEY FOR 60HZ 3000SPM | 1         |
| 8        | 001  | 87256-781-000-A | MOTOR PULLEY FOR 50HZ 3300SPM | 1         |
| 9        | 001  | 87257-781-000-A | MOTOR PULLEY FOR 60HZ 3300SPM | 1         |
| 10       |      | SS-R150710-SP   | SCREW 15/64-28 L=7            | 2         |
| 11       | 001  | MTJ-VH004200    | V-BELT, 42 INCH               | 1         |
| 12       | 001  | MTJ-VH004300    | V-BELT, 43 INCH               | 1         |
| 13       | 001  | MTJ-VH004400    | V-BELT, 44 INCH               | 1         |
| 14       |      | 87252-781-000   | BELT                          | 1         |

### 18. THREAD STAND COMPONENTS (SPECIAL ORDER PARTS)



| Ref. No. | Note | Part No.        | Description                 | Amt. Req. |
|----------|------|-----------------|-----------------------------|-----------|
| 1        |      | 03301-555-BA0   | THREAD STAND ASM.           | 1         |
| 2        |      | 83311-704-000   | SPOOL REST ROD RUBBER CAP   | (1)       |
| 3        |      | 83317-704-000   | NUT C15                     | (4)       |
| 4        |      | WP-1702600-S0   | WASHER 17X30X2,6            | (3)       |
| 5        |      | 03306-555-B00   | THREAD GUIDE STOPPER PLATE  | (1)       |
| 6        |      | 83307-704-000   | THREAD GUIDE A              | (2)       |
| 7        |      | 83313-704-0A0   | SPOOL REST ROD ASM., UPPER  | (1)       |
| 8        |      | 83305-704-000-A | SPOOL REST ROD JOINT        | (1)       |
| 9        |      | SM-6041410-SC   | SCREW M4X0,7 L=14           | (2)       |
| 10       |      | NM-6040000-SN   | NUT M4                      | (2)       |
| 11       |      | 83312-012-000   | SPOOL RETAINER              | (2)       |
| 12       |      | SM-9050813-SE   | SCREW M5X0,8 L=8            | (2)       |
| 13       |      | WS-0521010-KN   | SPRING WASHER 5,2X8,2X1     | (2)       |
| 14       |      | WP-0520656-SA   | WASHER 5,2X9,5X0,6          | (2)       |
| 15       |      | 83305-012-000   | SPOOL PIN                   | (2)       |
| 16       |      | 83311-012-000   | SPOOL REST CUSHION          | (2)       |
| 17       |      | 83303-704-000   | SPOOL REST                  | (2)       |
| 18       |      | WP-0560860-SE   | WASHER 5,6X12X0,8           | (2)       |
| 19       |      | WS-0521010-KN   | SPRING WASHER 5,2X8,2X1     | (2)       |
| 20       |      | NS-6123881-SE   | NUT 3/16-28                 | (2)       |
| 21       |      | 03302-555-R00   | BRACKET                     | (1)       |
| 22       |      | SM-9061080-SE   | SCREW M6 L=10               | (1)       |
| 23       |      | 83301-704-000-A | SPOOL REST ROD, LOWER       | (1)       |
| 24       |      | WS-1643202-KN   | SPRING WASHER 16,4X26,6X3,2 | (1)       |
| 25       |      | MA0-1153200     | STAPLE                      | (3)       |

19. EXCLUSIVE PARTS FOR LBH-782, LBH-783, LBH-784



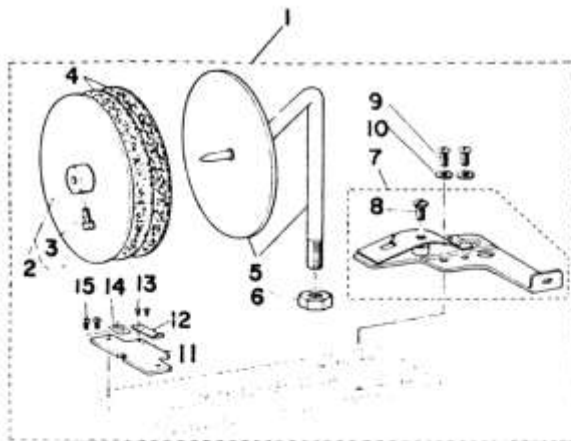
| Ref. No.           | Note | Part No.        | Description                    | Amt. Req. |
|--------------------|------|-----------------|--------------------------------|-----------|
| <b>(1) LBH-782</b> |      |                 |                                |           |
| 1                  |      | B1511-772-080   | WORK CLAMP CHECK HOLDER ASM,   | 1         |
| 2                  |      | B2702-047-000   | KNIFE 1"                       | 1         |
| 3                  |      | B1608-772-000   | LENGTH REGULATING SHAFT GUIDE  | 1         |
| 4                  |      | B2930-761-000   | SPUR GEAR (100)                | 1         |
| 5                  |      | B2931-761-000   | SPUR GEAR (190)                | 1         |
| 6                  |      | B1552-782-000   | WORK CLAMP CHECK (2)           | 1         |
| 7                  | 001  | B1508-772-A00   | WORK CLAMP CHECK (2A)          | 1         |
| 8                  | 001  | B1613-771-A00-A | WORK CLAMP CARRIER             | 1         |
| <b>(2) LBH-783</b> |      |                 |                                |           |
| 9                  |      | B1511-773-080   | WORK CLAMP CHECK HOLDER ASM,   | 1         |
| 10                 |      | B2702-047-500   | KNIFE 1-1/4"                   | 1         |
| 11                 |      | B1608-761-000   | LENGTH REGULATING SHAFT GUIDE  | 1         |
| 12                 |      | B2948-761-000   | SPUR GEAR (88)                 | 1         |
| 13                 |      | B2949-761-000   | SPUR GEAR (212)                | 1         |
| 14                 |      | B1552-783-000   | WORK CLAMP CHECK (3)           | 1         |
| 15                 | 001  | B1508-773-A00   | WORK CLAMP CHECK (3A)          | 1         |
| 16                 | 001  | B1613-771-A00   | WORK CLAMP CARRIER (A)         | 1         |
| <b>(3) LBH-784</b> |      |                 |                                |           |
| 17                 |      | B1513-774-000   | WORK CLAMP BRACKET             | 1         |
| 18                 |      | B1551-784-000   | WORK CLAMP ARM                 | 1         |
| 19                 |      | B1511-774-0A0   | WORK CLAMP CHECK HOLDER ASM,   | 1         |
| 20                 |      | B1552-784-000   | WORK CLAMP CHECK               | 1         |
| 21                 |      | B2402-774-000   | THROAT PLATE                   | 1         |
| 22                 |      | SS-2090530-SP   | SCREW 9/64-40 L= 4.8           | 2         |
| 23                 |      | B2401-774-0A0   | THROAT PLATE BASE ASM,         | 1         |
| 24                 |      | SS-5090320-SP   | SCREW 9/64-40 L= 3.2           | 1         |
| 25                 |      | B1611-774-0A0   | WORK CLAMP ARM BRACKET ASM,    | 1         |
| 26                 |      | SS-6151440-SP   | SCREW 15/64-28 L=14            | (1)       |
| 27                 |      | B1606-774-000   | WORK CLAMP CARRIER PITMAN      | 1         |
| 28                 |      | SD-0870401-SP   | HINGE SCREW D= 8.73 H= 4       | 1         |
| 29                 |      | B1605-774-000   | FEED ADJUSTING SHAFT           | 1         |
| 30                 |      | B2745-774-008   | KNIFE 1-1/2"                   | 1         |
| 31                 |      | B2745-774-00A   | KNIFE 1-3/8"                   | 1         |
| 32                 |      | B2944-761-000   | SPUR GEAR (74)                 | 1         |
| 33                 |      | B2945-761-000   | SPUR GEAR 252                  | 1         |
| 34                 |      | B1603-774-0A0   | LENGTH REGULATING ARM ASM,     | 1         |
| 35                 |      | B1608-774-000   | LENGTH REGULATING SHAFT GUIDE  | 1         |
| 36                 |      | B1612-774-000   | WORK CLAMP ARM BRACKET GUIDE   | 1         |
| 37                 |      | B1613-774-000   | WORK CLAMP CARRIER             | 1         |
| 38                 |      | B1609-774-000   | WORK CLAMP ARM SLIDE ROD       | 1         |
| 39                 |      | B1516-774-000   | WORK CLAMP ARM BEARING BRACKET | 1         |

Note 01 ..... Special order part for light weight knit materials. (Please use the work clamp check and the work clamp carrier together as a pair.)

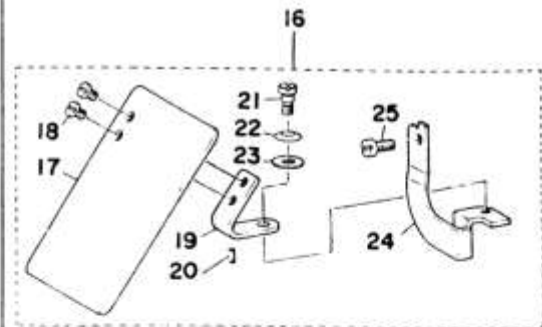
\* All parts other than the above are same as these used in model LBH-781.

## 20. SPECIAL ORDER PARTS

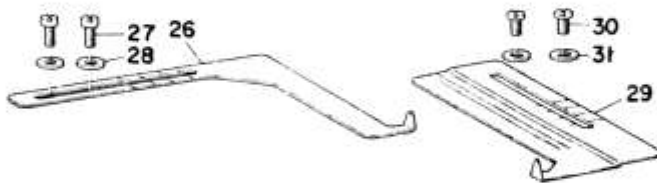
### (1) TAPE REEL COMPONENTS



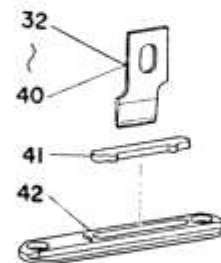
### (2) NEEDLE SAFETY PLATE COMPONENTS



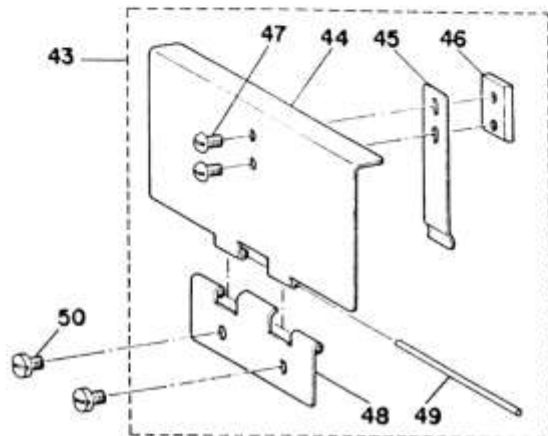
### (3) BUTTON-HOLING MEASURING GAUGES



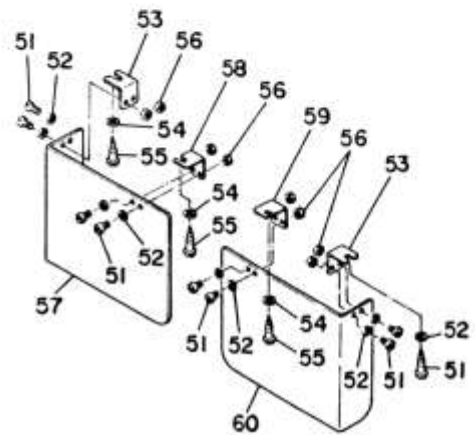
### (4) KNIFE FOR SPECIAL



### (5) HOOK OIL SHIELD COMPONENTS



### (6) COVER COMPONENTS

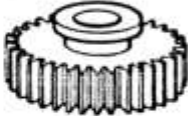
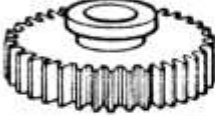







| Ref. No.                                  | Note | Part No.      | Description                        | E. C.   | Amt. Req. |
|---|------|---------------|------------------------------------|---------|-----------|
| <b>(1) TAPE REEL COMPONENTS</b>           |      |               |                                    |         |           |
| 1   |      | 89201-761-0A0 | REINFORCING TAPE ATCHMNT ASM.      |         | 1         |
| 2   |      | 89204-047-0A0 | TAPE ATTACHMENT SUPPORT PLATE ASM. |         | (1)       |
| 3   |      | SS-4090810-SP | SCREW 9/64-40 L=8                  |         | (1)       |
| 4   |      | 89205-047-000 | ADJUSTING FELT                     |         | (2)       |
| 5   |      | 89201-761-080 | REINFORCING TAPE ATTACHMENT ASM.   |         | (1)       |
| 6   |      | NS-6700540-SP | NUT 5/16-24                        |         | (1)       |
| 7   |      | 89202-761-0A0 | TAPE GUIDE PLATE ASM.              |         | (1)       |
| 8   |      | SS-5110740-TP | SCREW 11/64-40 L= 6.5              |         | (1)       |
| 9   |      | SS-7090510-SP | SCREW 9/64-40 L= 4.6               |         | (2)       |
| 10  |      | WP-0450000-SD | WASHER 4.5X8X0.5                   |         | (2)       |
| 11  |      | 89206-761-000 | TAPE RETAINER                      |         | (1)       |
| 12  |      | 89207-761-000 | TAPE RETAINER SPRING               |         | (1)       |
| 13  |      | SS-6060210-SP | SCREW 3/32-56 L= 1.9               |         | (2)       |
| 14  |      | 89205-761-000 | SPACER FOR TAPE RETAINER           |         | (1)       |
| 15  |      | SS-5060410-SP | SCREW 3/32-56 L=3.5                |         | (2)       |
| <b>(2) NEEDLE SAFETY PLATE COMPONENTS</b> |      |               |                                    |         |           |
| 16  |      | 83120-761-0A0 | SAFETY PLATE ASM.                  |         | 1         |
| 17  |      | 83120-372-000 | SAFETY PLATE                       |         | (1)       |
| 18  |      | SS-7110740-TP | SCREW 11/64-40 L=7                 |         | (2)       |
| 19  |      | 83121-372-000 | SAFETY PLATE INSTALLING PLATE      |         | (1)       |
| 20  |      | 83123-372-000 | STOPPER PIN                        |         | (1)       |
| 21  |      | SD-0600401-SD | HINGE SCREW D= 6 H= 4              |         | (1)       |
| 22  |      | 83125-155-000 | DISC SPRING                        |         | (1)       |
| 23  |      | WP-0650876-SD | WASHER 6.5X13X0.8                  |         | (1)       |
| 24  |      | 83120-761-000 | SAFETY PLATE ADJUSTING BASE        |         | (1)       |
| 25  |      | SS-7111120-SP | SCREW 11/64-40 L=10.5              |         | (1)       |
| <b>(3) BUTTON-HOLING MEASURING GAUGES</b> |      |               |                                    |         |           |
| 26  |      | 89402-771-000 | MEASURING GAUGE, CROSSWISE         |         | 1         |
| 27  |      | SS-7111120-SP | SCREW 11/64-40 L=10.5              |         | 2         |
| 28  |      | WP-0501016-SD | WASHER 5X10.5X1                    |         | 2         |
| 29  |      | 89401-761-000 | DISTANCE MEASURING GAUGE           |         | 1         |
| 30  |      | SS-7110340-SP | SCREW 11/64-40 L= 7.8              |         | 2         |
| 31  |      | WP-0501016-SD | WASHER 5X10.5X1                    |         | 2         |
| <b>(4) KNIFE FOR SPECIAL</b>              |      |               |                                    |         |           |
| 32  |      | 82745-771-F00 | KNIFE 1/4"                         |         | 1         |
| 33  |      | 82745-771-K00 | KNIFE 3/8"                         |         | 1         |
| 34  |      | 82745-771-L00 | KNIFE 1/2"                         |         | 1         |
| 35  |      | 82745-771-M00 | KNIFE 5/8"                         |         | 1         |
| 36  |      | 82745-771-N00 | KNIFE 3/4"                         |         | 1         |
| 37  |      | 82745-771-P00 | KNIFE 7/8"                         |         | 1         |
| 38  |      | 82745-771-Q00 | KNIFE 1"                           |         | 1         |
| 39  |      | 82745-771-R00 | KNIFE 1-1/8"                       |         | 1         |
| 40  |      | 82745-771-S00 | KNIFE 1-1/4"                       |         | 1         |
| 41  |      | 82746-771-000 | KNIFE GUARD                        |         | 1         |
| 42  |      | 82402-771-00B | THROAT PLATE                       |         | 1         |
| <b>(5) HOOK OIL SHIELD COMPONENTS</b>     |      |               |                                    |         |           |
| 43  |      | 81157-771-0A0 | HOOK OIL SHIELD ASM                |         | 1         |
| 44  |      | 81157-771-000 | HOOK OIL SHIELD                    |         | (1)       |
| 45  |      | 81158-771-000 | HOOK OIL SHIELD SPRING             |         | (1)       |
| 46  |      | 81159-771-000 | SPRING SET PLATE                   |         | (1)       |
| 47  |      | SS-5090610-SP | SCREW 9/64-40 L=6                  |         | (2)       |
| 48  |      | 81161-771-000 | HOOK OIL SHIELD HINGE              |         | (1)       |
| 49  |      | 81160-771-000 | HINGE PIN                          |         | (1)       |
| 50  |      | SS-7110510-SP | SCREW 11/64-40 L=5                 |         | 2         |
| <b>(6) COVER COMPONENTS</b>               |      |               |                                    |         |           |
| 51  | *    | SS-7110710-SP | SCREW 11/64-40 L=7                 | A.10/82 | 8         |
| 52  | *    | WP-0480856-SP | WASHER 4.8X8.4X0.8                 | A.10/82 | 8         |
| 53  | *    | 87272-781-000 | COVER MOUNTING BRACKET B           | A.10/82 | 2         |
| 54  | *    | WP-0501016-SC | WASHER 5X10.5X1                    | A.10/82 | 8         |
| 55  | *    | SK-3452000-SE | WOOD SCREW D=4.5 L=20              | A.10/82 | 4         |
| 56  | *    | NS-6110310-SP | NUT 11/64-40                       | A.10/82 | 8         |
| 57  | *    | 87273-781-000 | SPEED TRANSMITTER COVER            | A.10/82 | 1         |
| 58  | *    | 87274-781-000 | COVER MOUNTING BRACKET C           | A.10/82 | 1         |
| 59  | *    | 87271-781-000 | COVER MOUNTING BRACKET A           | A.10/82 | 1         |
| 60  | *    | 87270-781-000 | PULLEY COVER                       | A.10/82 | 1         |

## 21. EXCHANGING PARTS

### (1) TABLE OF CHANGING GEARS

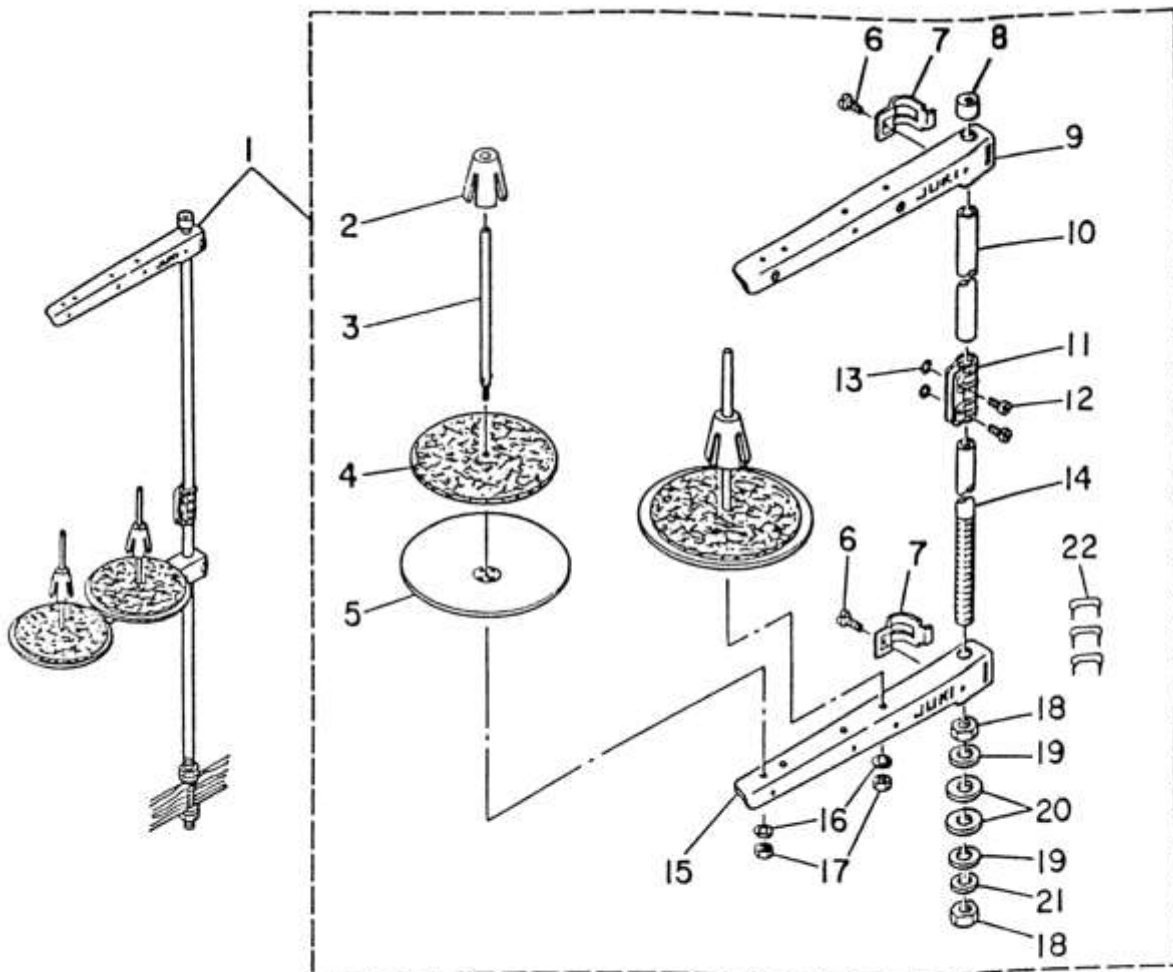
| 1. Small gear   |            |               | 2. Large gear   |               |
|---|------------|---------------|---|---------------|
|  |            |               |  |               |
| Set   | Stitch No. | Part No.      | Stitch No.  | Part No.      |
| A   | 54         | B2936-761-000 | 345   | B2937-761-000 |
| B   | 62         | B2938-761-000 | 300   | B2939-761-000 |
| C   | 66         | B2940-761-000 | 285   | B2941-761-000 |
| D   | 70         | B2942-761-000 | 268   | B2943-761-000 |
| E   | 74         | B2944-761-000 | 252   | B2945-761-000 |
| F   | 79         | B2946-761-000 | 238   | B2947-761-000 |
| G   | 83         | B2928-761-000 | 225   | B2929-761-000 |
| H   | 88         | B2948-761-000 | 212   | B2949-761-000 |
| I   | 93         | B2950-761-000 | 200   | B2951-761-000 |
| J   | 100        | B2930-761-000 | 190   | B2931-761-000 |
| K   | 105        | B2952-761-000 | 180   | B2953-761-000 |
| L   | 110        | B2932-761-000 | 170   | B2933-761-000 |
| M   | 115        | B2954-761-000 | 160   | B2955-761-000 |
| N   | 123        | B2934-761-000 | 152   | B2935-761-000 |
| O   | 130        | B2956-761-000 | 145   | B2957-761-000 |

### (2) TABLE SHOWING PARTS USED IN CONNECTION WITH KNIVES

| Knife   |        |         |               | Work clamp check   | Throat plate  |
|---|--------|---------|---------------|--|---|
| A   |        |         |               | B  | C   |
|  |        |         |               |  |  |
| No.   | Size   | (mm)    | Part No.      | Part No.   | Part No.  |
| 1   | 1/4"   | (6.35)  | B2702-047-F00 | B1552-781-000  | B2402-771-000   |
| 2   | 3/8"   | (9.53)  | B2702-047-K00 |  |   |
| 3   | 1/2"   | (12.7)  | B2702-047-L00 |  |   |
| 4   | 9/16"  | (14.29) | B2702-047-V00 |  |   |
| 5   | 5/8"   | (15.88) | B2702-047-M00 |  |   |
| 6   | 3/4"   | (19.05) | B2702-047-N00 |  |   |
| 7   | 7/8"   | (22.23) | B2702-047-P00 | B1552-782-000  | B2402-774-000   |
| 8   | 1"     | (25.4)  | B2702-047-Q00 | B1552-783-000  |   |
| 9   | 1-1/4" | (31.75) | B2702-047-S00 |  |   |
| 10  | 1-3/8" | (34.9)  | B2745-774-00A | B1552-784-000  |   |
| 11  | 1-1/2" | (38.1)  | B2745-774-00B |  |   |

Note Standard model machine is used as the standard for work clamp check and throat plate.

# THREAD STAND COMPONENTS



| REF.NO. | NOTE | PART NO.        | DESCRIPTION               | AMT. |
|---------|------|-----------------|---------------------------|------|
| 1       | 001. | 111-83654       | THREAD STAND ASM.         | 1    |
| 2       |      | 111-81906       | SPOOL RETAINER            | (2)  |
| 3       |      | B3320-704-L00-A | SPOOL PIN                 | (2)  |
| 4       |      | B3311-012-000   | SPOOL REST CUSHION        | (2)  |
| 5       |      | 111-81807       | SPOOL REST                | (2)  |
| 6       |      | SM-6061610-SC   | SCREW M6 L=16             | (2)  |
| 7       |      | B3318-704-L00-A | THREAD GUIDE ARM JOINT    | (2)  |
| 8       |      | B3311-704-000   | SPOOL REST ROD RUBBER CAP | (1)  |
| 9       |      | 111-81757       | THREAD GUIDE ASM.         | (1)  |
| 10      |      | 111-81609       | SPOOL REST ROD, UPPER     | (1)  |
| 11      |      | B3305-704-000-A | SPOOL REST ROD JOINT      | (1)  |
| 12      |      | SM-4051405-SE   | SCREW M5X0.8 L=14         | (2)  |
| 13      |      | NM-6050001-SE   | NUT M5X0.8                | (2)  |
| 14      |      | 111-81500       | SPOOL REST ROD, LOWER     | (1)  |
| 15      |      | 111-81708       | SPOOL REST ARM            | (1)  |
| 16      |      | VS-0510002-KN   | SPRING WASHER 5.1X8.5X1.3 | (2)  |
| 17      |      | NM-6050001-SE   | NUT M5X0.8                | (2)  |
| 18      |      | B3317-704-000   | NUT C15                   | (2)  |
| 19      |      | VP-1702600-S0   | WASHER 17X30X2.6          | (2)  |
| 20      |      | D3310-555-000   | RUBBER WASHER             | (2)  |
| 21      |      | VS-1843202-KR   | SPRING WASHER             | (1)  |
| 22      |      | MAO-11532000    | STAPLE                    | (3)  |

Note 001.... For Urban White